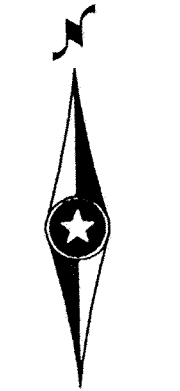


# RECORD DRAWINGS



SCALE  
1"=150'

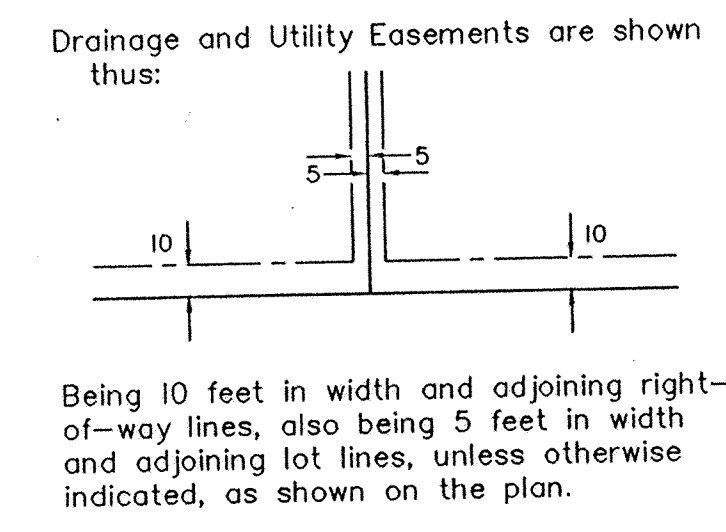
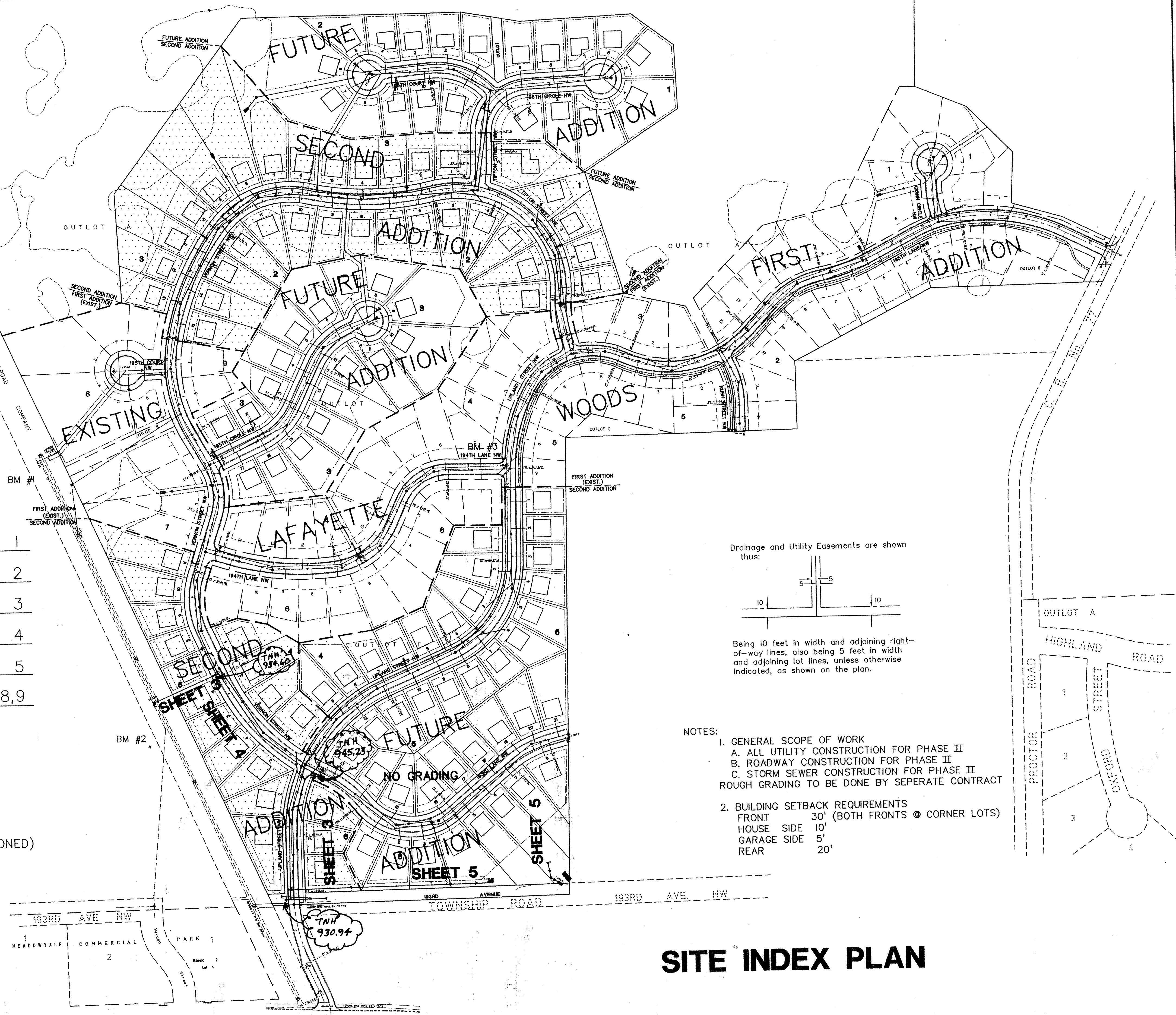
PRIME CONTRACTOR/UTILITIES: C.W. HOULE, INC.  
CURB & GUTTER: HALVORSON CONCRETE, INC.  
STREETS: BAUERLY BROS., INC.  
INSPECTION: HOWARD R. GREEN CO.  
SURVEY: JOHN OLIVER & ASSOCIATES, INC.  
EARTHWORK: SOIL-CON, INC.  
RECORD DRAWINGS: FRED FRITSCHEL, JOHN OLIVER & ASSOCIATES, INC.  
CONSTRUCTED: 1998

## SHEET INDEX

TITLE SHEET	1
SITE INDEX PLAN	2
UPLAND ST NW & WATERMAIN EASEMENT	3
VERNON ST. NW	4
STORM EASEMENT	5
DETAILS	6,7,8,9

### BENCHMARKS

- #1 ALONG BURLINGTON NORTHERN RAILROAD (ABANDONED)  
FIRST FIRE HYDRANT NORTH OF MEADOWVALE  
ELEMENTARY SCHOOL.-T.N.H. ELEV.=931.63
- #2 25 FEET± EAST AND 50 FEET± SOUTH  
OF SOUTHEAST CORNER MEADOWVALE  
ELEMENTARY SCHOOL.-T.N.H. ELEV.=919.95
- #3 FIRE HYDRANT AT NORTHWEST QUADRANT OF  
UPLAND STREET NW AND 194TH LANE NW.  
-T.N.H. ELEV.=958.15



- NOTES:
- GENERAL SCOPE OF WORK
    - A. ALL UTILITY CONSTRUCTION FOR PHASE II
    - B. ROADWAY CONSTRUCTION FOR PHASE II
    - C. STORM SEWER CONSTRUCTION FOR PHASE II
 ROUGH GRADING TO BE DONE BY SEPERATE CONTRACT
  - BUILDING SETBACK REQUIREMENTS
    - FRONT 30' (BOTH FRONTS @ CORNER LOTS)
    - HOUSE SIDE 10'
    - GARAGE SIDE 5'
    - REAR 20'

# SITE INDEX PLAN

REV. NO.	DATE	DESCRIPTION
1	10/14/97	GEN. REVISION
2	10/21/97	CITY COMMENTS
3	10/24/97	STORM SEWER
4	11/13/97	STORM SEWER
5	5/19/99	RECORD DRAWING

I hereby certify that this plan was prepared by me or under my direct supervision and that I am a duly Registered Professional Engineer under the laws of the State of Minnesota.

Signed: *[Signature]*  
Date: 9/26/97 Reg. No. 14960

**John Oliver & Associates, Inc.**  
Civil Engineering, Land Surveying, Land Planning  
580 Dodge Avenue  
P.O. Box 100  
Elk River, Minnesota  
(612)441-2072 (FAX)441-5665

201 W. Travelers Trail, Suite 200  
Burrheadville, MN 56337  
(612)894-3045 (FAX)894-3049

LAFAYETTE WOODS  
SECOND ADDITION  
ELK RIVER, MN  
FOR  
WINDSOR DEVELOPMENT L.L.P.

SHEET NO.  
2 OF 9