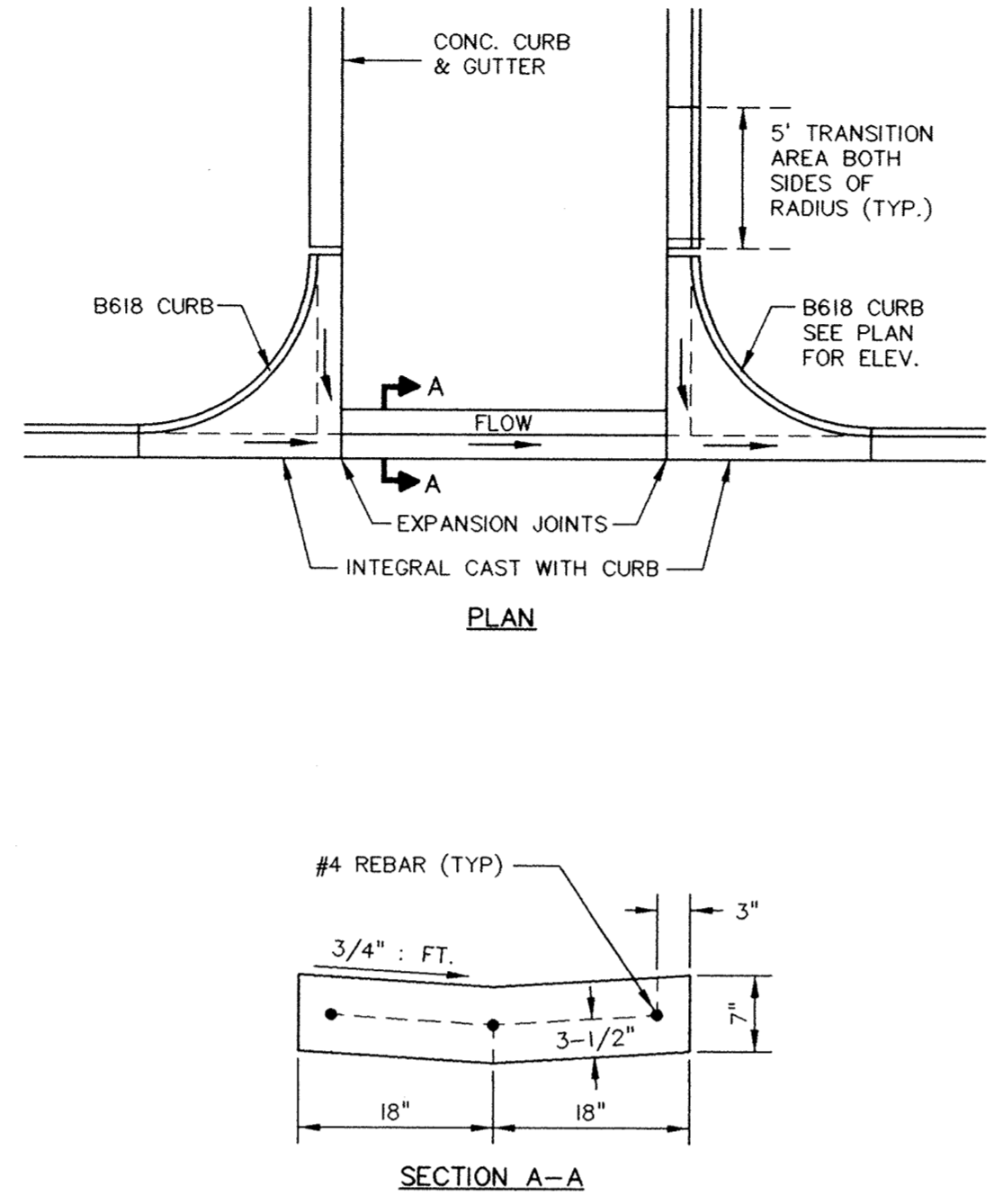
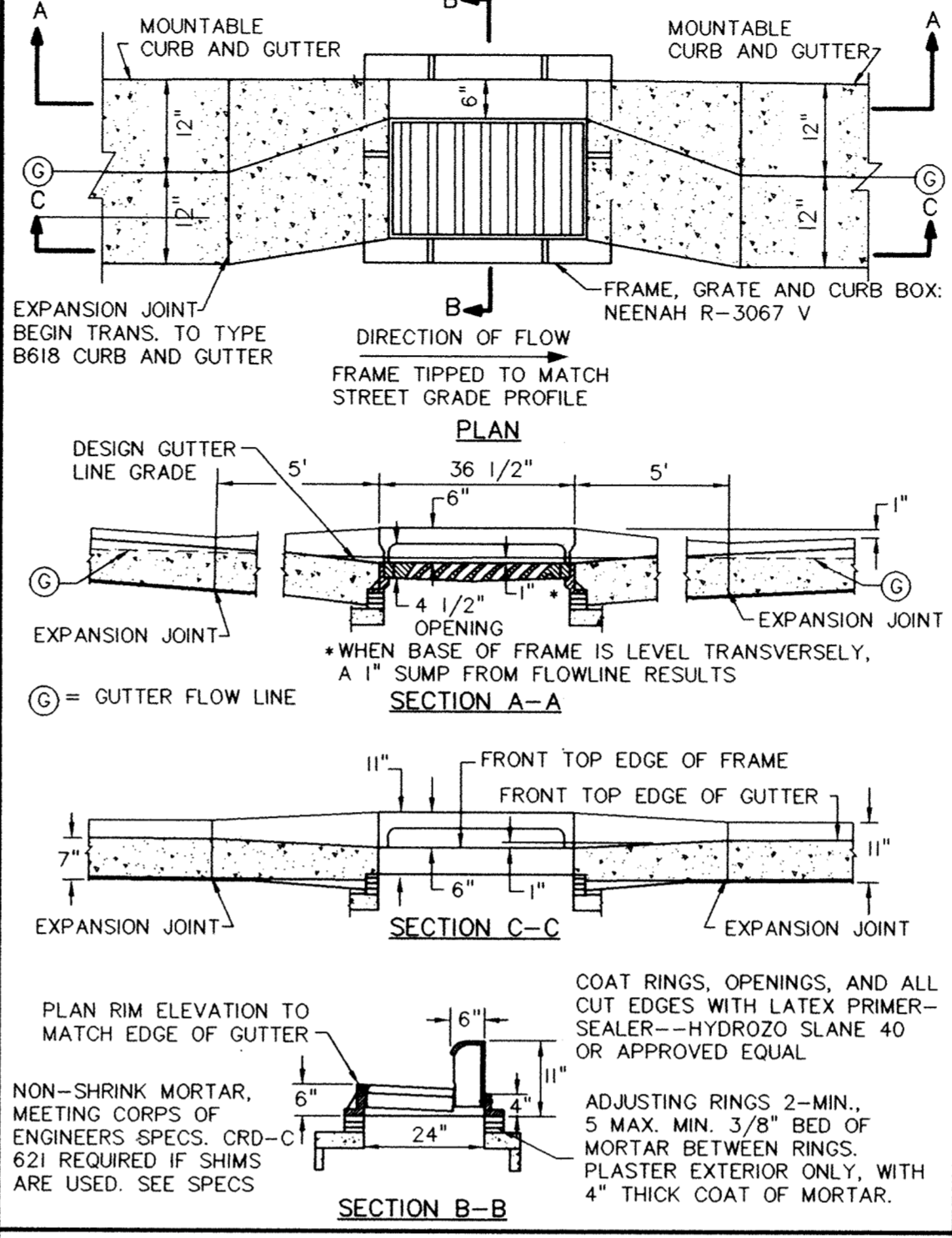


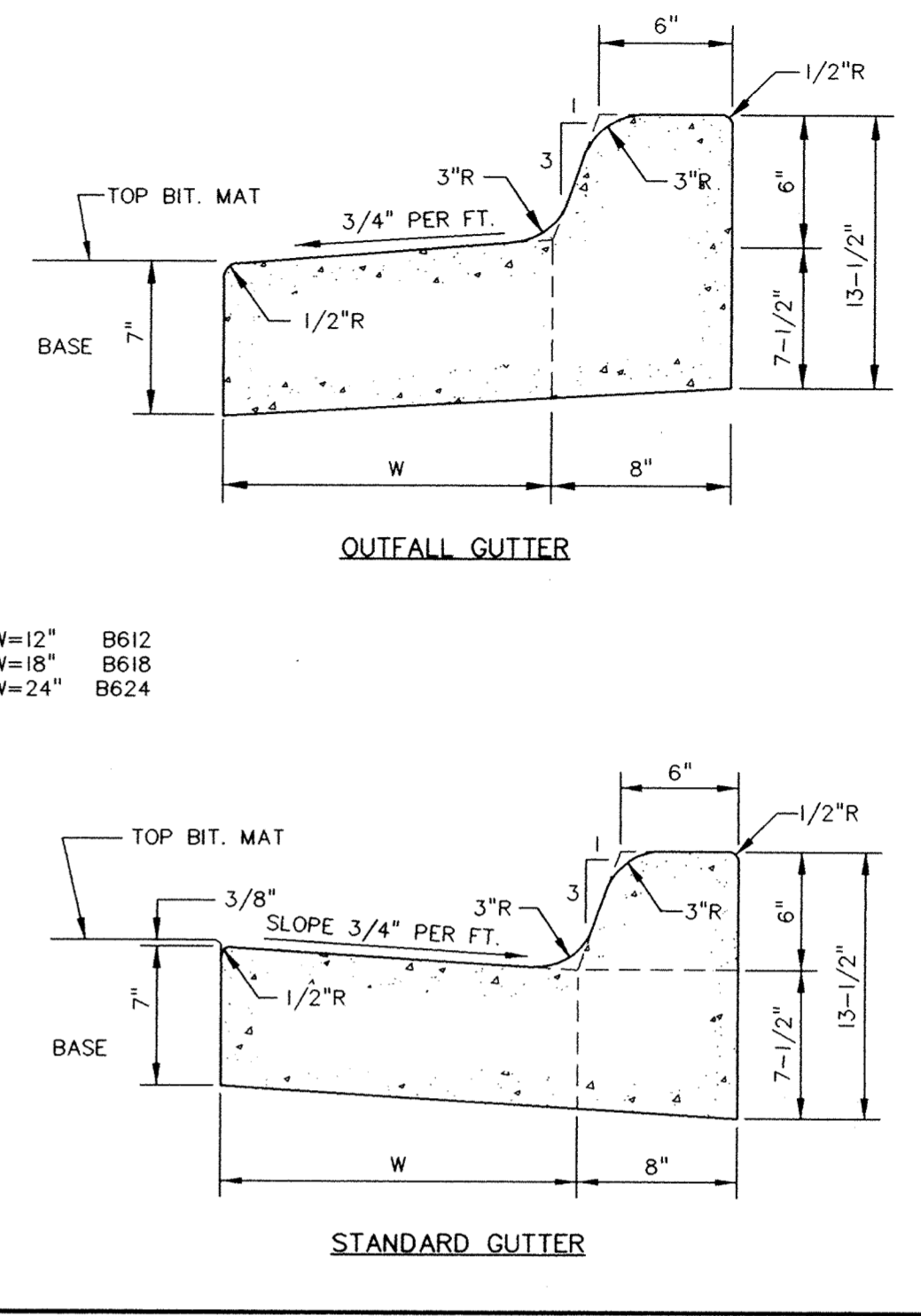
RECORD DRAWINGS



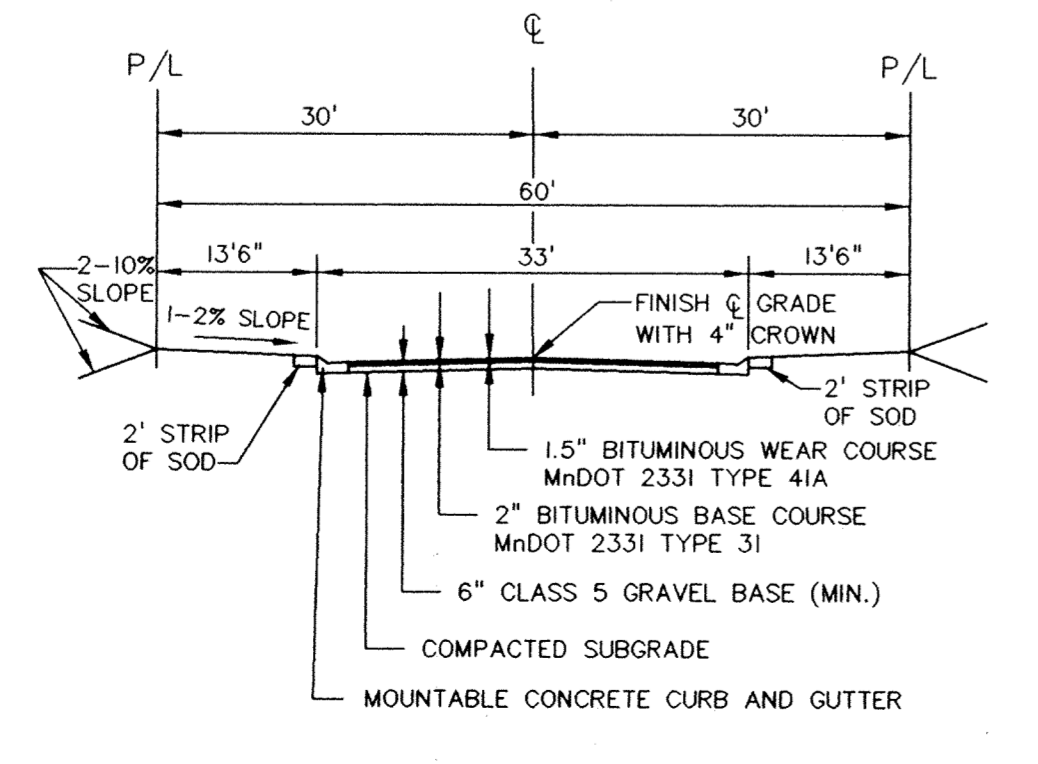
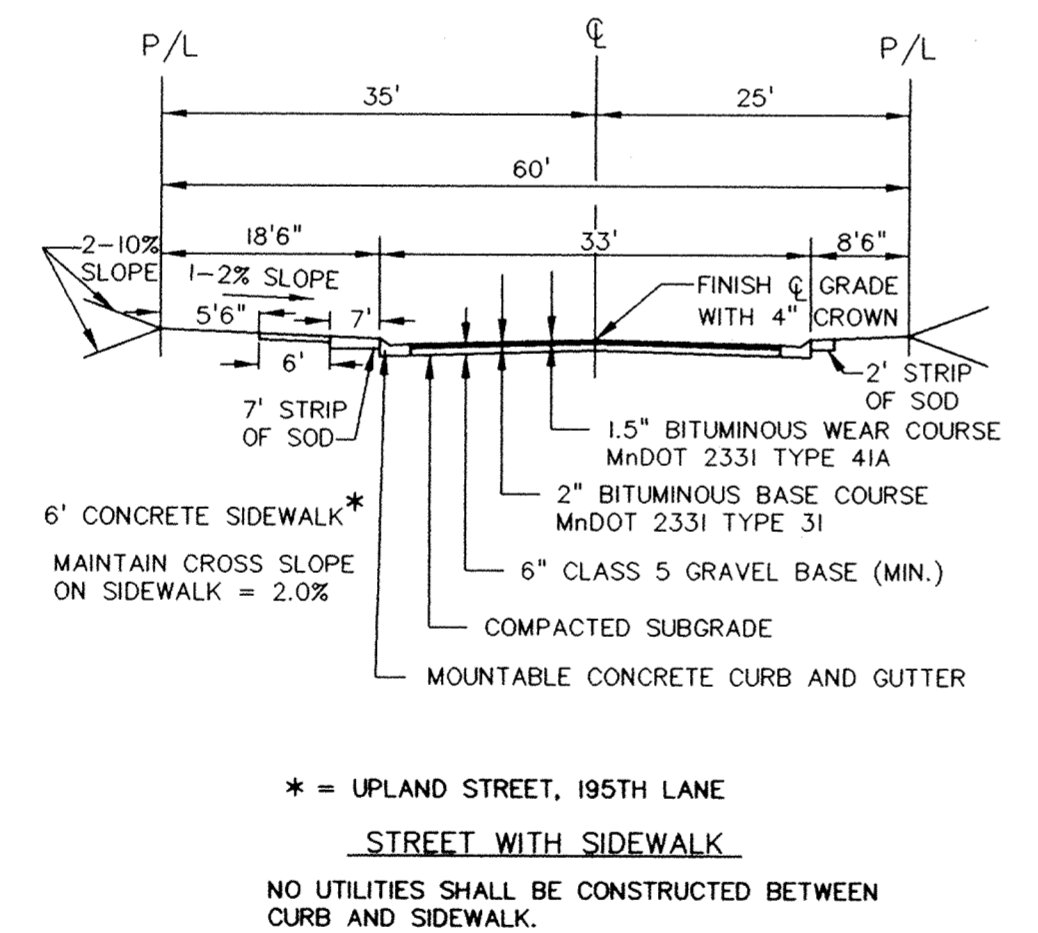
CONCRETE VALLEY GUTTER (R-10)



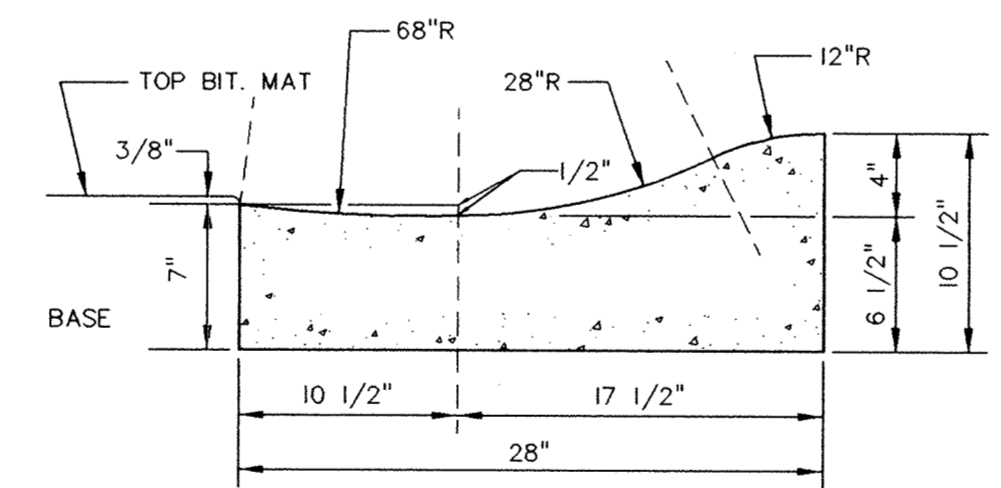
CATCH BASIN FRAME/MOUNTABLE CURB & GUTTER (R-SP-01)



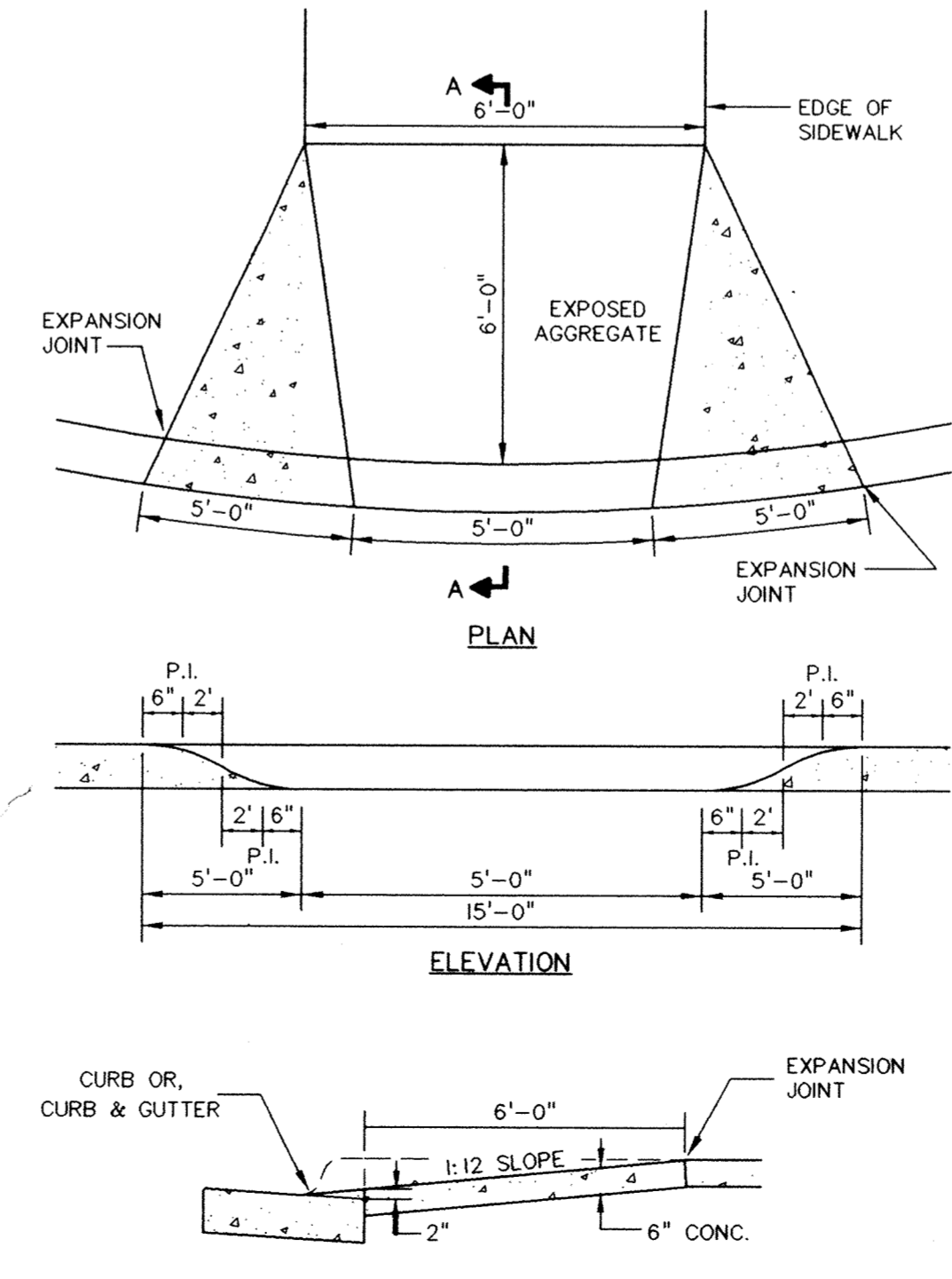
"B" TYPE CONCRETE CURB & GUTTER (R-08)



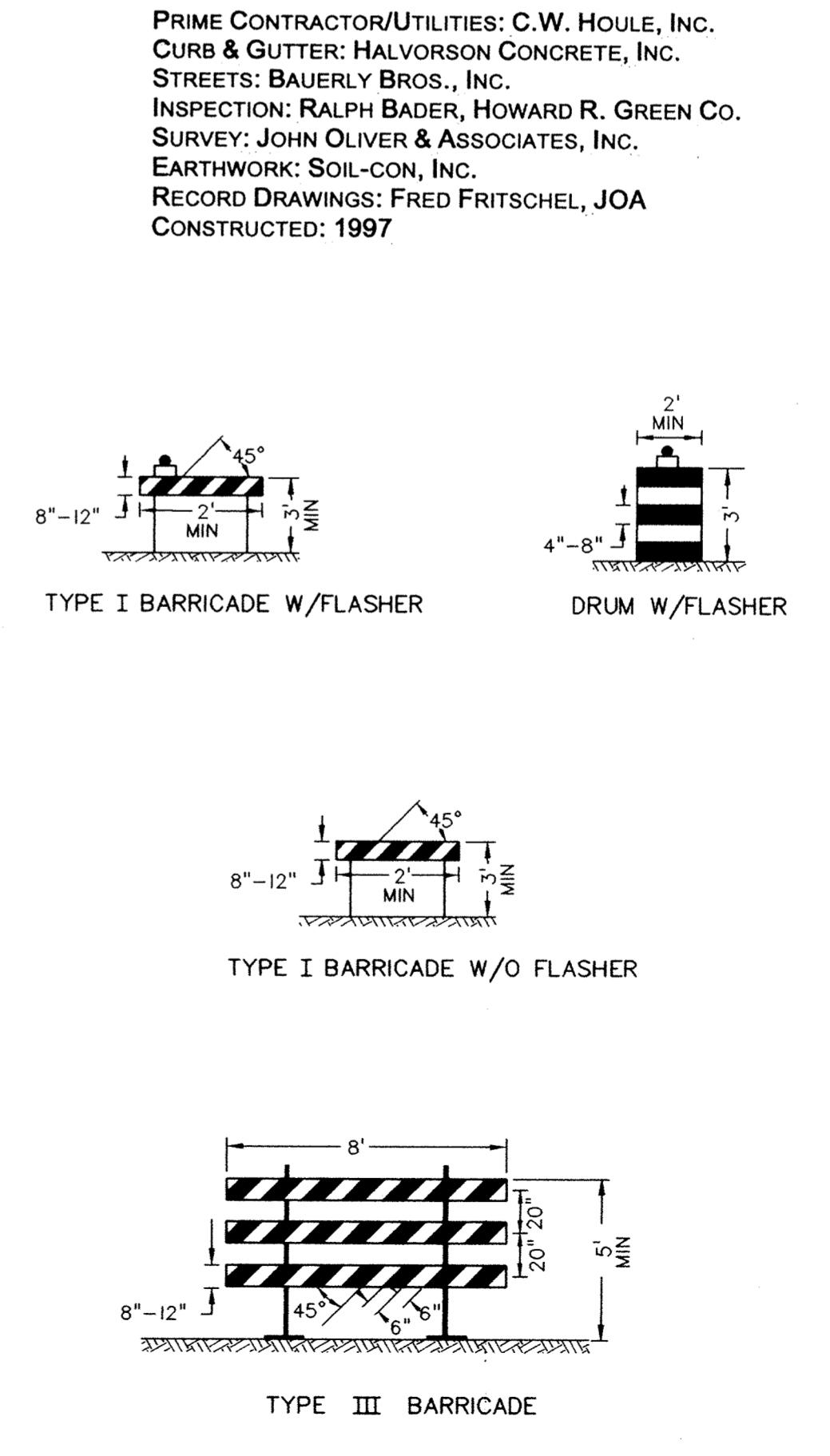
TYPICAL STREET SECTION



MOUNTABLE CONCRETE CURB & GUTTER (R-06)



PEDESTRIAN CURB RAMP (R-11)



STANDARD BARRICADES (R-16)

| REV. NO. | DATE | DESCRIPTION |
|----------|---------|--|
| 1 | 7/31/97 | PER ENGINEER REVIEW LETTER DATED 7/25/97 |
| 2 | 2/12/98 | RECORD DRAWINGS |

I hereby certify that this plan was prepared by me or under my direct supervision and that I am a duly Registered Professional Engineer under the laws of the State of Minnesota.
Signed: *John Oliver*
Date: 7/09/97 Reg. No. 14960

John Oliver & Associates, Inc.
Civil Engineering, Land Surveying, Land Planning
580 Dodge Avenue
Elk River, Minnesota
(612)441-2072 (FAX)441-5665
201 W. Travelers Trail, Suite 200
Burnsville, MN 55337
(612)894-3045 (FAX)894-3049

LAFAYETTE WOODS
SECOND ADDITION
ELK RIVER, MN
WINDSOR DEVELOPMENT L.L.P.
DETAILS

SHEET NO. 9 OF 9

1255