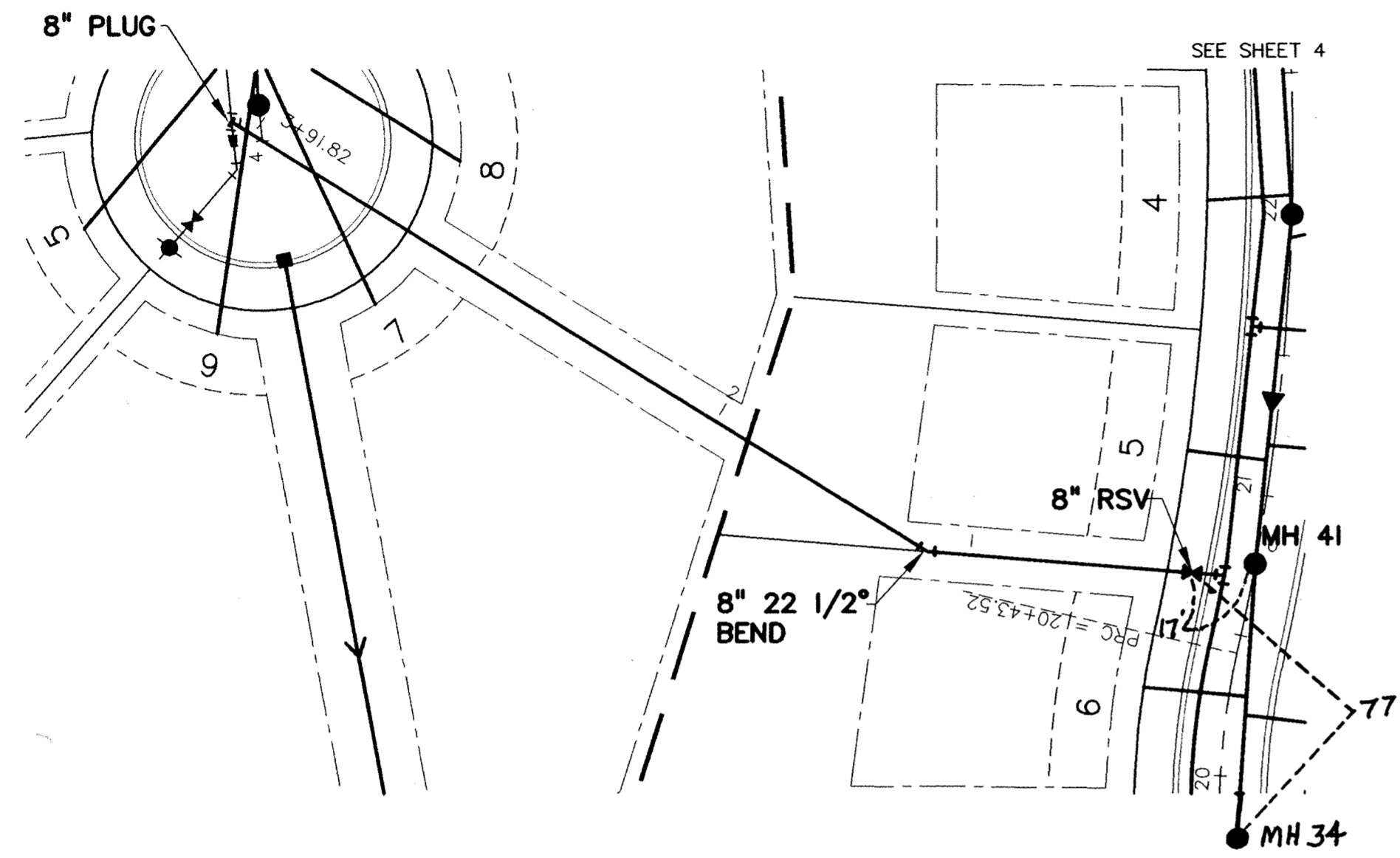


UTILITY EASEMENT



50



RECORD DRAWINGS

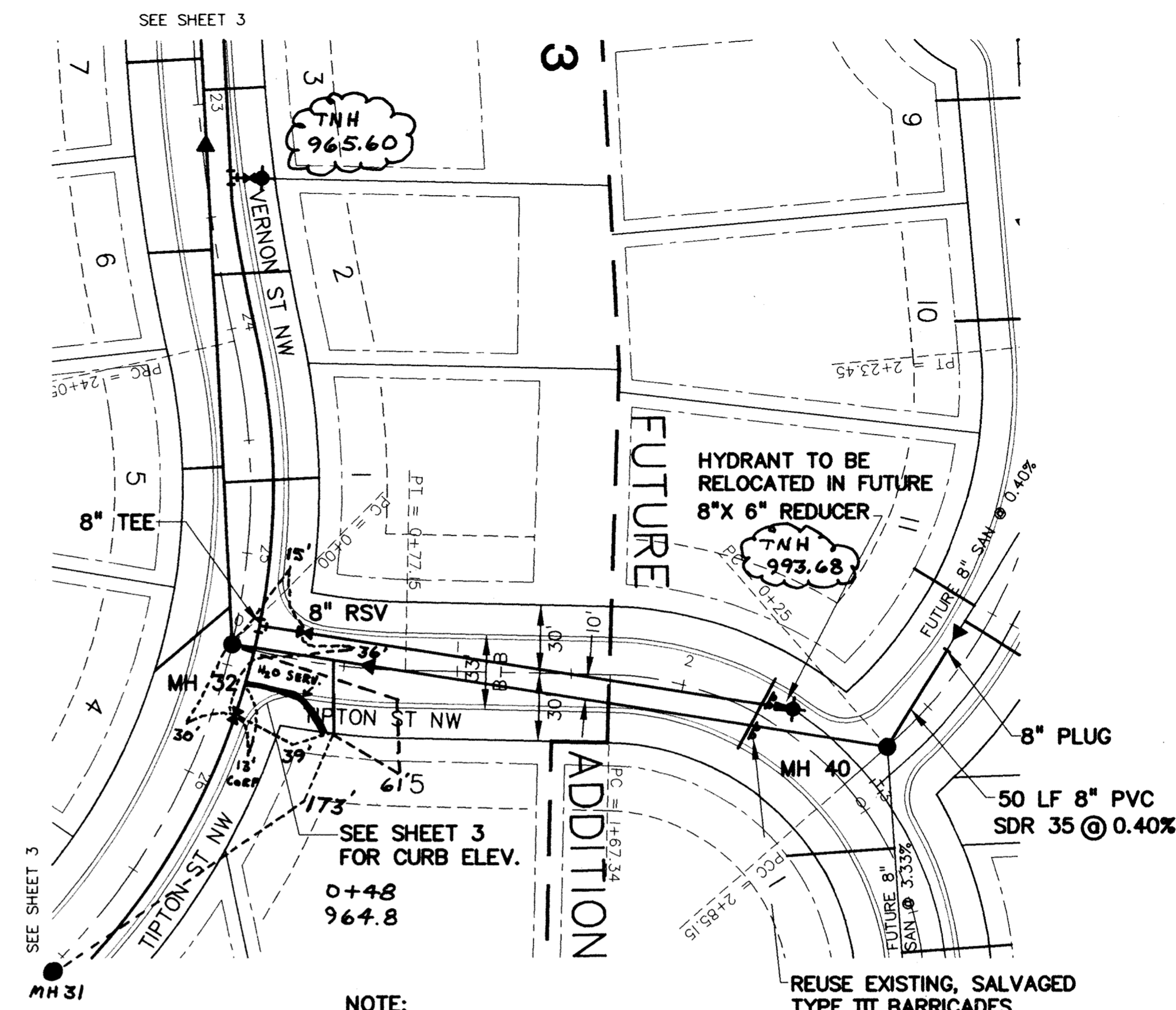


50

PRIME CONTRACTOR/UTILITIES: C.W. HOULE, INC.
 CURB & GUTTER: HALVORSON CONCRETE, INC.
 STREETS: BAUERLY BROS., INC.
 INSPECTION: RALPH BADER, HOWARD R. GREEN CO.
 SURVEY: JOHN OLIVER & ASSOCIATES, INC.
 EARTHWORK: SOIL-CON, INC.
 RECORD DRAWINGS: FRED FRITSCHEL, JOA
 CONSTRUCTED: 1997

- NOTES:
- 1) STATIONING REFERS TO STREET CENTERLINE.
 - 2) DIMENSIONS TO BACK OF CURB UNLESS OTHERWISE NOTED.
 - 3) TOP OF CURB ELEVATIONS ARE TO MOUNTABLE CURB SECTION.
 - 4) INSTALL B618 CONCRETE CURB AND GUTTER AT CURB RETURNS. TRANSITION TO MOUNTABLE IN 5 FEET BEYOND CURB PC.
 - 5) WATER SERVICES MAY BE INSTALLED IN THE SAME TRENCH PARALLEL WITH THE SANITARY SERVICES ON A BENCH A MINIMUM OF 18 INCHES ABOVE THE TOP OF SANITARY SERVICES.
 - 6) CENTERLINE GRADES ARE BACK OF MOUNTABLE CURB ELEVATIONS. SEE DETAILS FOR B618 TOP OF CURB ELEVATIONS.

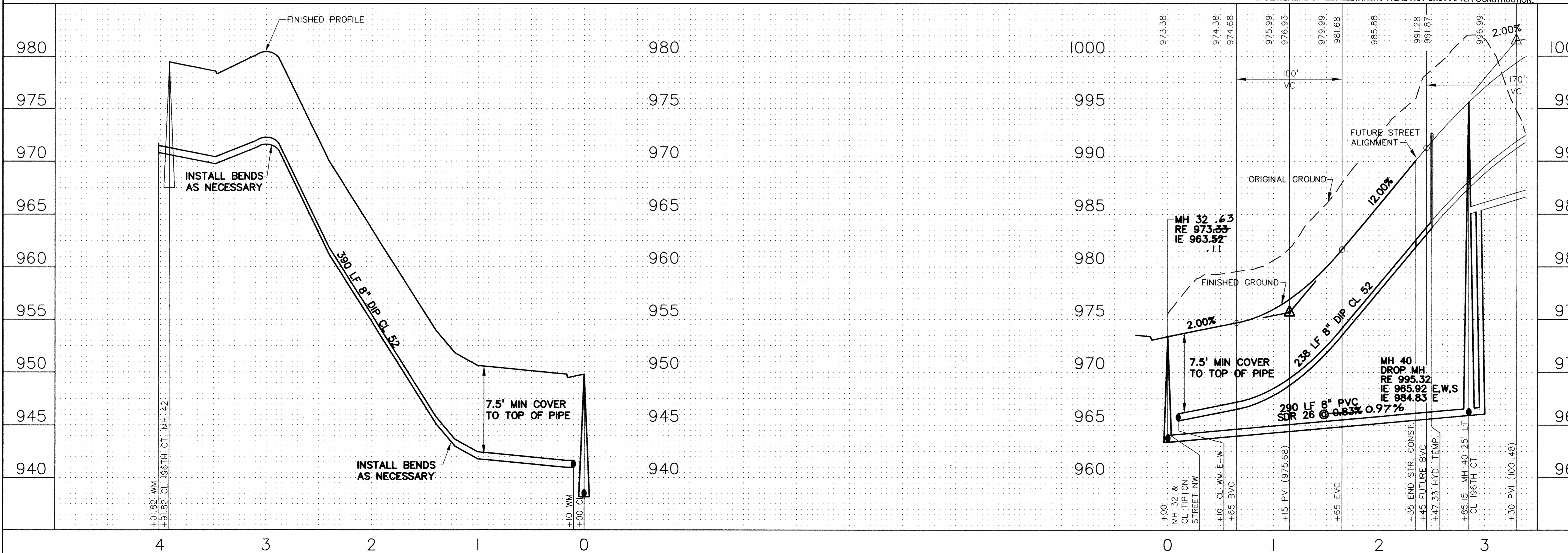
TIPTON STREET NW



NOTE:
 STREET CONSTRUCTION ENDS
 AT APPROXIMATELY STA. 2+35

REUSE EXISTING, SALVAGED
 TYPE III BARRICADES
 (2 TYP.)

NOTE: CENTERLINE STREET ELEVATIONS WERE NOT SHOT AFTER CONSTRUCTION.



REV. NO.	DATE	DESCRIPTION
1	7/31/97	PER ENGINEER REVIEW LETTER DATED 7/29/97
2	10/01/97	REVISE SANITARY SEWER & WATERMAIN
3	10/03/97	REVISE SANITARY SEWER & WATERMAIN
4	11/05/97	REVISE SANITARY SEWER & WATERMAIN
5	11/05/97	REVISE SANITARY SEWER & WATERMAIN
6	2/12/98	RECORD DRAWING

DATE: 9/26/97
 DESIGN BY: GD
 DRAWN BY: BG
 CHECKED BY: GD, JB
 DWG FILE: 5-UPLAND
 TEXT FILE: NONE
 FILE NO.: 7024.20-03

I hereby certify that this plan was prepared by me or under my direct supervision and that I am a duly licensed Professional Engineer in the State of Minnesota.
 Signed: *[Signature]*
 Date: 9/26/97 Reg. No. 14960

John Oliver & Associates, Inc.
 Civil Engineering, Land Surveying, Land Planning
 580 Dodge Avenue
 Elk River, Minnesota 55330
 (612)447-2072 (FAX)447-5665

**LAFAYETTE WOODS SECOND ADDITION
 ELK RIVER, MN**

WINDSOR DEVELOPMENT L.L.P.
 SANITARY SEWER, WATERMAIN,
 STORM SEWER AND STREET PLAN
 UTILITY EASEMENT & TIPTON ST NW

SHEET NO. 5 OF 9