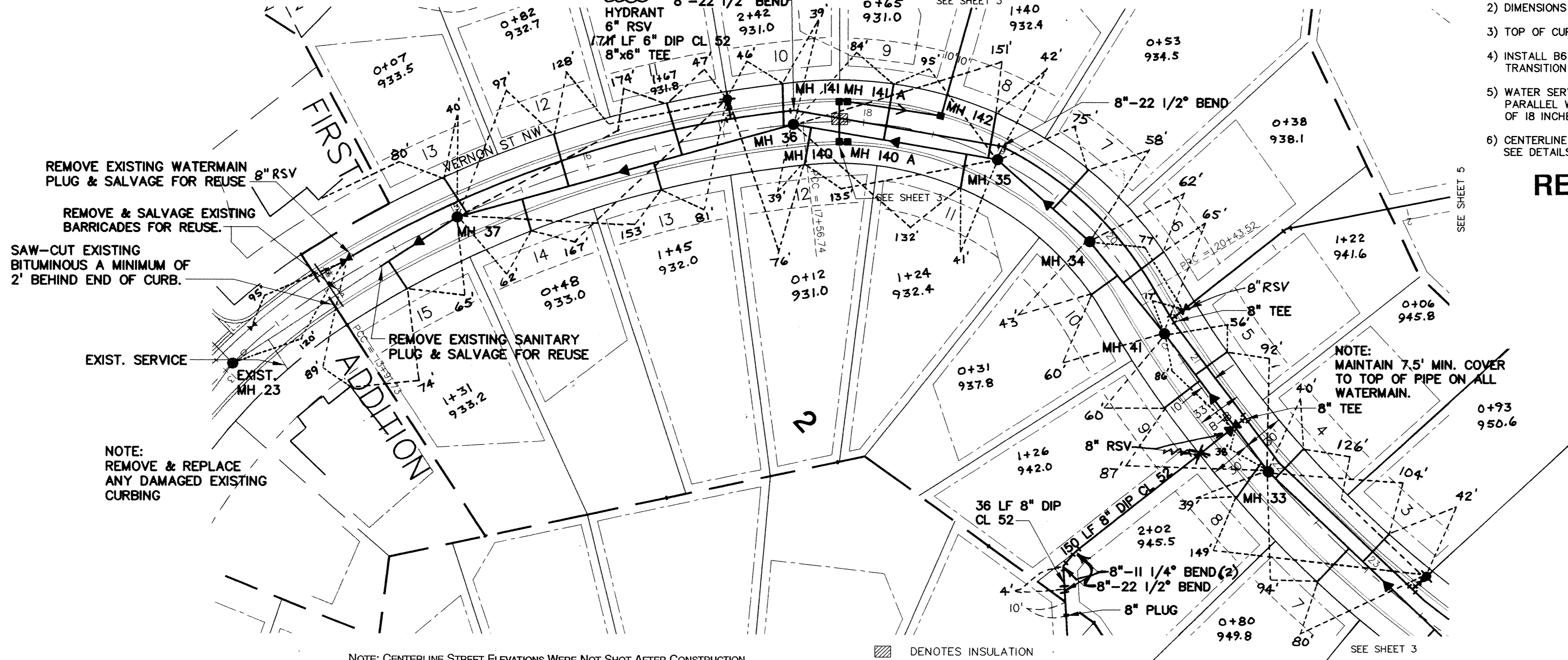


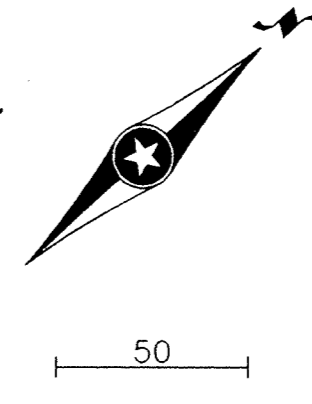
VERNON STREET NW



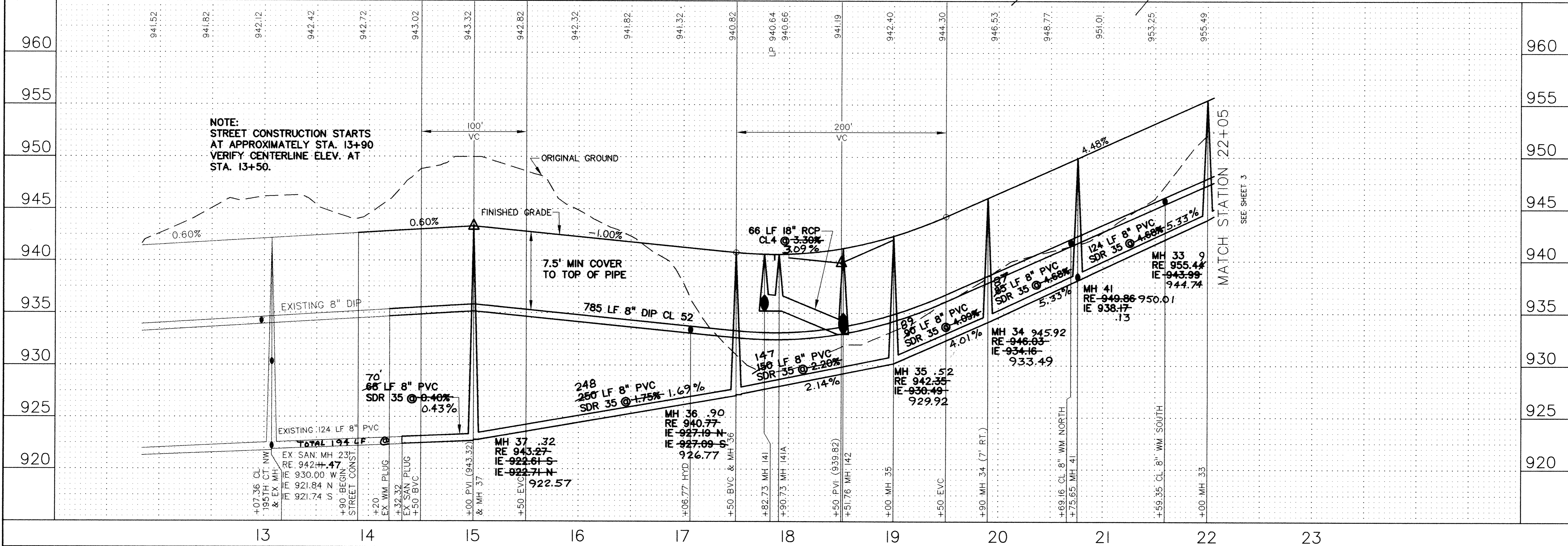
- NOTES:**
- 1) STATIONING REFERS TO STREET CENTERLINE.
 - 2) DIMENSIONS TO BACK OF CURB UNLESS OTHERWISE NOTED.
 - 3) TOP OF CURB ELEVATIONS ARE TO MOUNTABLE CURB SECTION.
 - 4) INSTALL B618 CONCRETE CURB AND GUTTER AT CURB RETURNS. TRANSITION TO MOUNTABLE IN 5 FEET BEYOND CURB PC.
 - 5) WATER SERVICES MAY BE INSTALLED IN THE SAME TRENCH PARALLEL WITH THE SANITARY SERVICES ON A BENCH A MINIMUM OF 18 INCHES ABOVE THE TOP OF SANITARY SEWER SERVICES.
 - 6) CENTERLINE GRADES ARE BACK OF MOUNTABLE CURB ELEVATIONS. SEE DETAILS FOR B618 TOP OF CURB ELEVATIONS.

RECORD DRAWINGS

PRIME CONTRACTOR/UTILITIES: C.W. HOULE, INC.
 CURB & GUTTER: HALVORSON CONCRETE, INC.
 STREETS: BAUERLY BROS., INC.
 INSPECTION: RALPH BADER, HOWARD R. GREEN CO.
 SURVEY: JOHN OLIVER & ASSOCIATES, INC.
 EARTHWORK: SOIL-CON, INC.
 RECORD DRAWINGS: FRED FRITSCHEL, JOA
 CONSTRUCTED: 1997



NOTE: CENTERLINE STREET ELEVATIONS WERE NOT SHOT AFTER CONSTRUCTION. DENOTES INSULATION



NOTE: STREET CONSTRUCTION STARTS AT APPROXIMATELY STA. 13+90. VERIFY CENTERLINE ELEV. AT STA. 13+50.

REV. NO.	DATE	DESCRIPTION
1	7/31/97	PER ENGINEER REVIEW LETTER DATED 7/25/97
2	9/05/97	STORM SEWER BY POND AREA
3	10/01/97	REVISE SANITARY SEWER & WATERMAIN
4	10/07/97	ADD VALVES
5	10/14/97	REVISE SANITARY SEWER & WATERMAIN
6	11/05/97	REVISE SANITARY SEWER & WATERMAIN
7	2/11/98	RECORD DRAWINGS

DATE:	9/26/97	DESIGN BY:	GD
DRAWN BY:	BG	CHECKED BY:	GD/BJB
DWG FILE:	4-TIP	TEXT FILE:	NONE
SIGNED:	<i>[Signature]</i>	FILE NO.:	7024.20-03
DATE:	9/26/97	REG. NO.:	14960

I hereby certify that this plan was prepared by me or under my direct supervision and that I am a duly Registered Professional Engineer under the laws of the State of Minnesota.

[Signature]
 Date: 9/26/97 Reg. No. 14960

John Oliver & Associates, Inc.
 Civil Engineering, Land Surveying, Land Planning
 580 Dodge Avenue
 Elk River, Minnesota 55330
 (612)441-2072 (FAX)441-5665
 201 W. Travelers Trail, Suite 200
 Burnsville, MN 55337
 (612)894-3045 (FAX)894-3049

LAFAYETTE WOODS SECOND ADDITION
 ELK RIVER, MN
WINDSOR DEVELOPMENT L.L.P.
 SANITARY SEWER, WATERMAIN,
 STORM SEWER AND STREET PLAN
 VERNON ST NW