



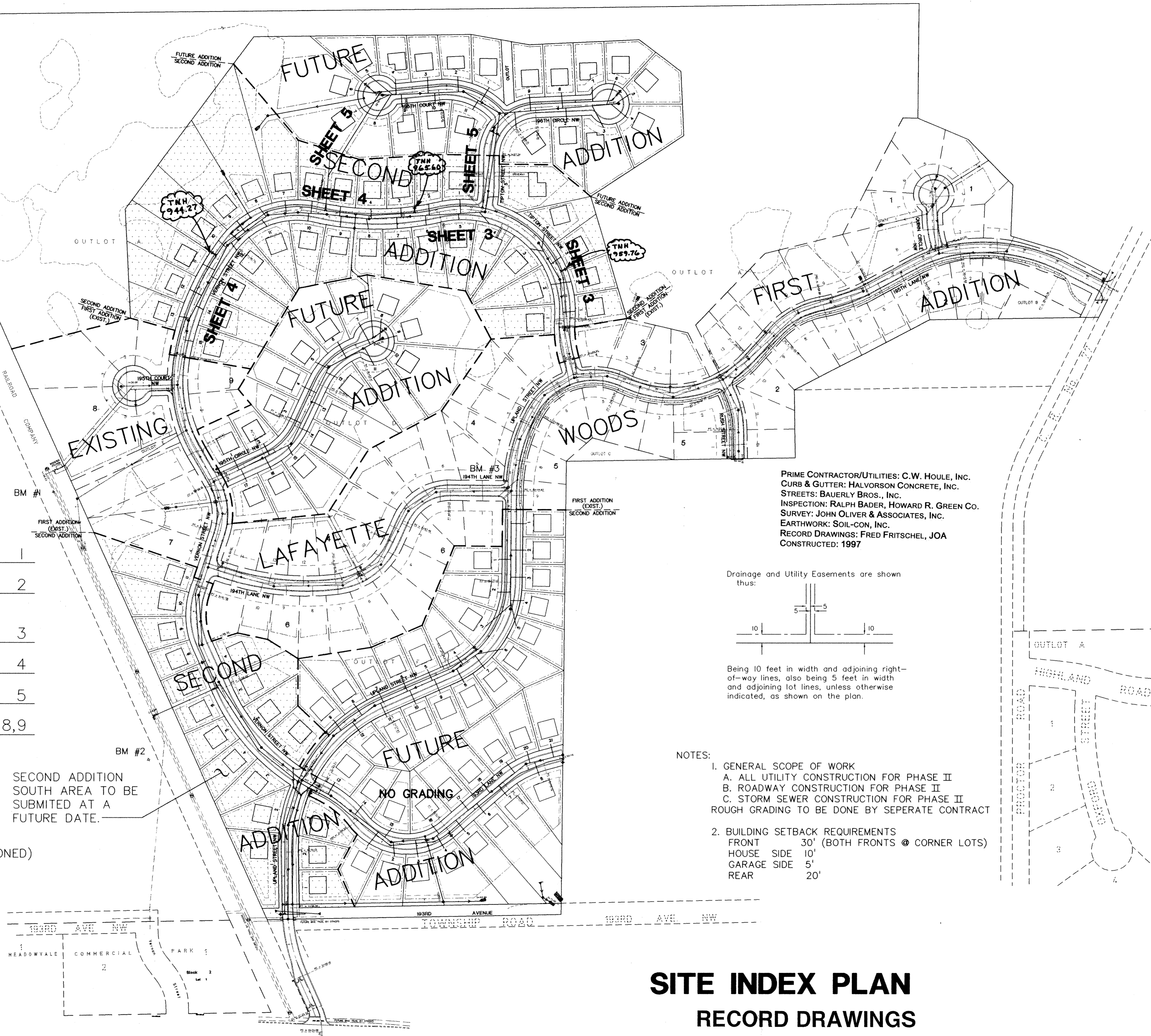
SCALE  
1"=150'

**RECORD DRAWINGS**

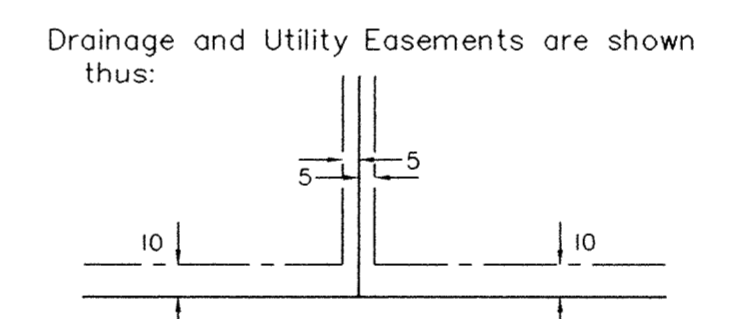
SHEET INDEX

|  |         |
|--|---------|
| TITLE SHEET                                | 1       |
| SITE INDEX PLAN                            | 2       |
| VERNON/TIPTON ST. N.W. AND AND STORM SEWER | 3       |
| VERNON ST. N.W.                            | 4       |
| TIPTON ST. N.W. & UTILITY EASEMENT         | 5       |
| DETAILS                                    | 6,7,8,9 |

- BENCHMARKS
- #1 ALONG BURLINGTON NORTHERN RAILROAD (ABANDONED) FIRST FIRE HYDRANT NORTH OF MEADOWVALE ELEMENTARY SCHOOL.-T.N.H. ELEV.=931.63
  - #2 25 FEET<sup>1</sup>/<sub>2</sub> EAST AND 50 FEET<sup>1</sup>/<sub>2</sub> SOUTH OF SOUTHEAST CORNER MEADOWVALE ELEMENTARY SCHOOL.-T.N.H. ELEV.=919.95
  - #3 FIRE HYDRANT AT NORTHWEST QUADRANT OF UPLAND STREET NW AND 194TH LANE NW. -T.N.H. ELEV.=958.15



PRIME CONTRACTOR/UTILITIES: C.W. HOULE, INC.  
CURB & GUTTER: HALVORSON CONCRETE, INC.  
STREETS: BAUERLY BROS., INC.  
INSPECTION: RALPH BADER, HOWARD R. GREEN CO.  
SURVEY: JOHN OLIVER & ASSOCIATES, INC.  
EARTHWORK: SOIL-CON, INC.  
RECORD DRAWINGS: FRED FRITSCHEL, JOA  
CONSTRUCTED: 1997



Drainage and Utility Easements are shown thus:

- NOTES:
1. GENERAL SCOPE OF WORK
    - A. ALL UTILITY CONSTRUCTION FOR PHASE II
    - B. ROADWAY CONSTRUCTION FOR PHASE II
    - C. STORM SEWER CONSTRUCTION FOR PHASE II
 ROUGH GRADING TO BE DONE BY SEPERATE CONTRACT
  2. BUILDING SETBACK REQUIREMENTS
    - FRONT 30' (BOTH FRONTS @ CORNER LOTS)
    - HOUSE SIDE 10'
    - GARAGE SIDE 5'
    - REAR 20'

**SITE INDEX PLAN  
RECORD DRAWINGS**

| REV. NO. | DATE     | DESCRIPTION                              |
|----------|----------|--|
| 1        | 7/31/97  | PER ENGINEER REVIEW LETTER DATED 7/23/97 |
| 2        | 10/01/97 | REVISE SANITARY SEWER & WATERMAIN        |
| 3        | 10/07/97 | ADD VALVES                               |
| 4        | 10/14/97 | REVISE SANITARY SEWER & WATERMAIN        |
| 5        | 11/05/97 | REVISE SANITARY SEWER & WATERMAIN        |
| 6        | 2/12/98  | RECORD DRAWINGS                          |

I hereby certify that this plan was prepared by me or under my direct supervision and that I am a duly Licensed Professional Engineer under the laws of the State of Minnesota.

Signed: *[Signature]*  
Date: 7/09/97 Reg. No. 14960

**John Oliver & Associates, Inc.**  
Civil Engineering, Land Surveying, Land Planning  
580 Dodge Avenue  
Elk River, Minnesota  
(612)441-2072 (FAX)441-5665  
201 W. Translucens Trail, Suite 200  
Barnesville, MN 55837  
(612)894-3045 (FAX)894-3049

**LAFAYETTE WOODS  
SECOND ADDITION  
ELK RIVER, MN**  
FOR  
**WINDSOR DEVELOPMENT L.L.P.**  
SITE INDEX PLAN

SHEET NO.  
2 OF 9