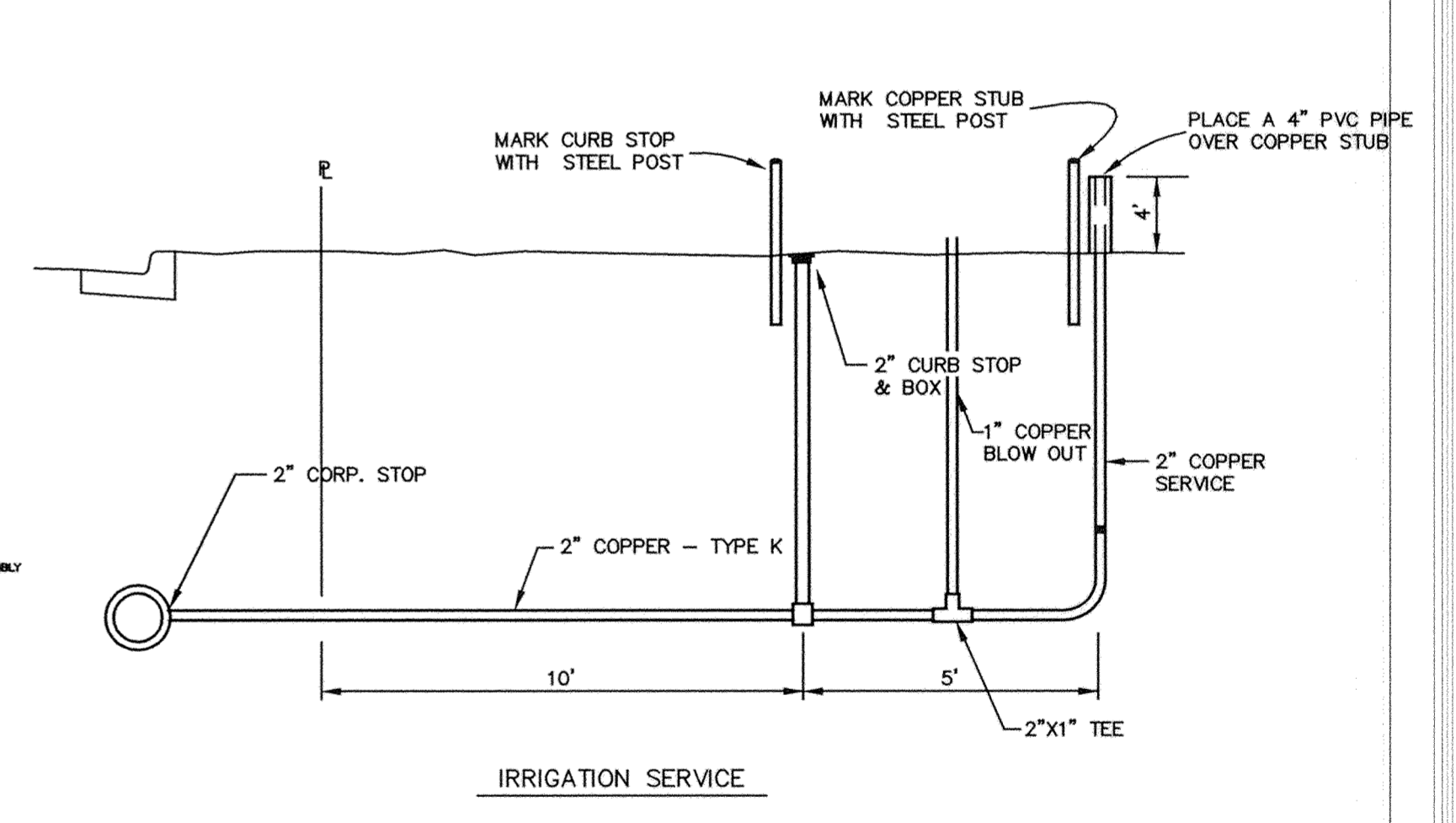
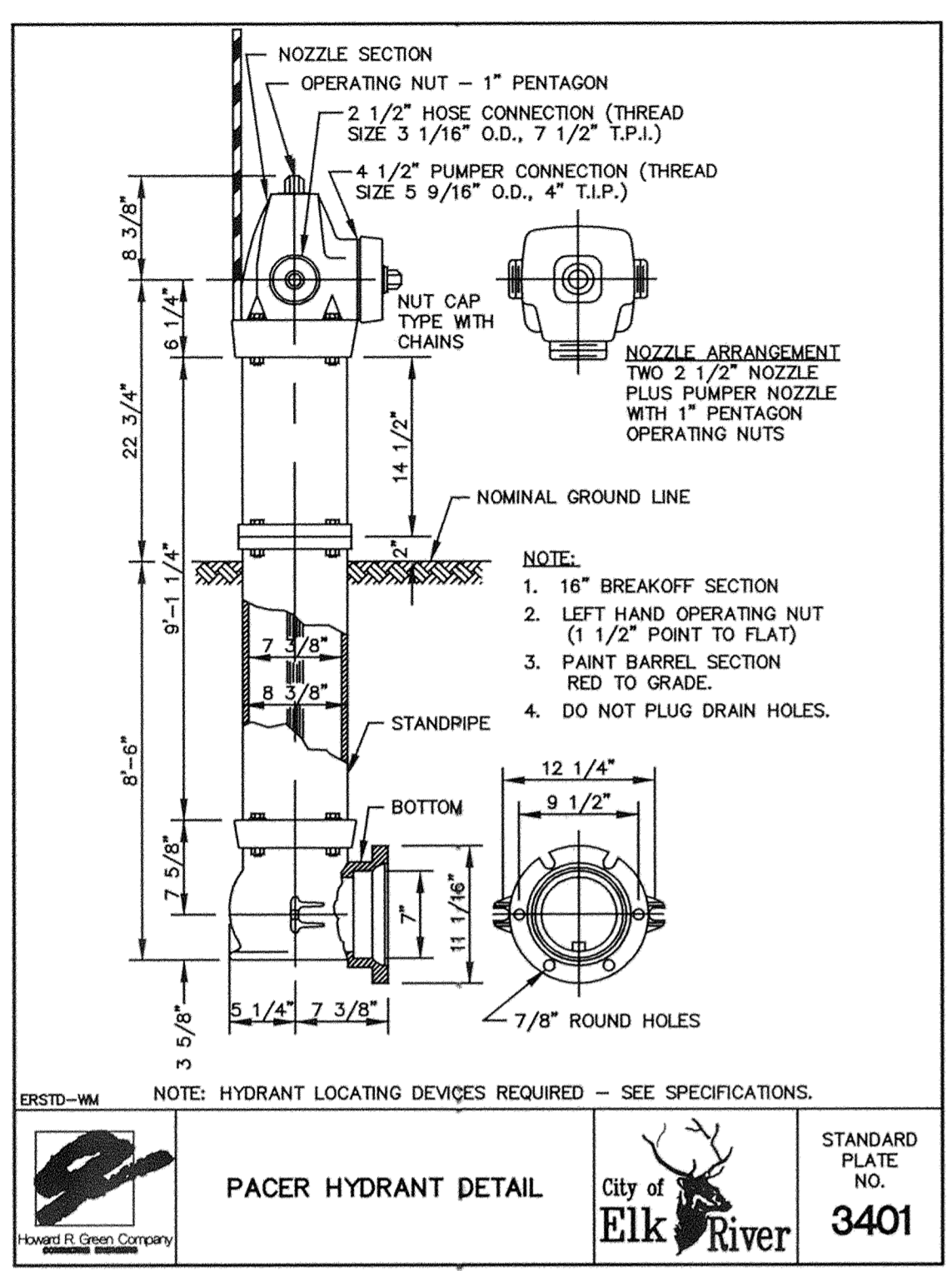
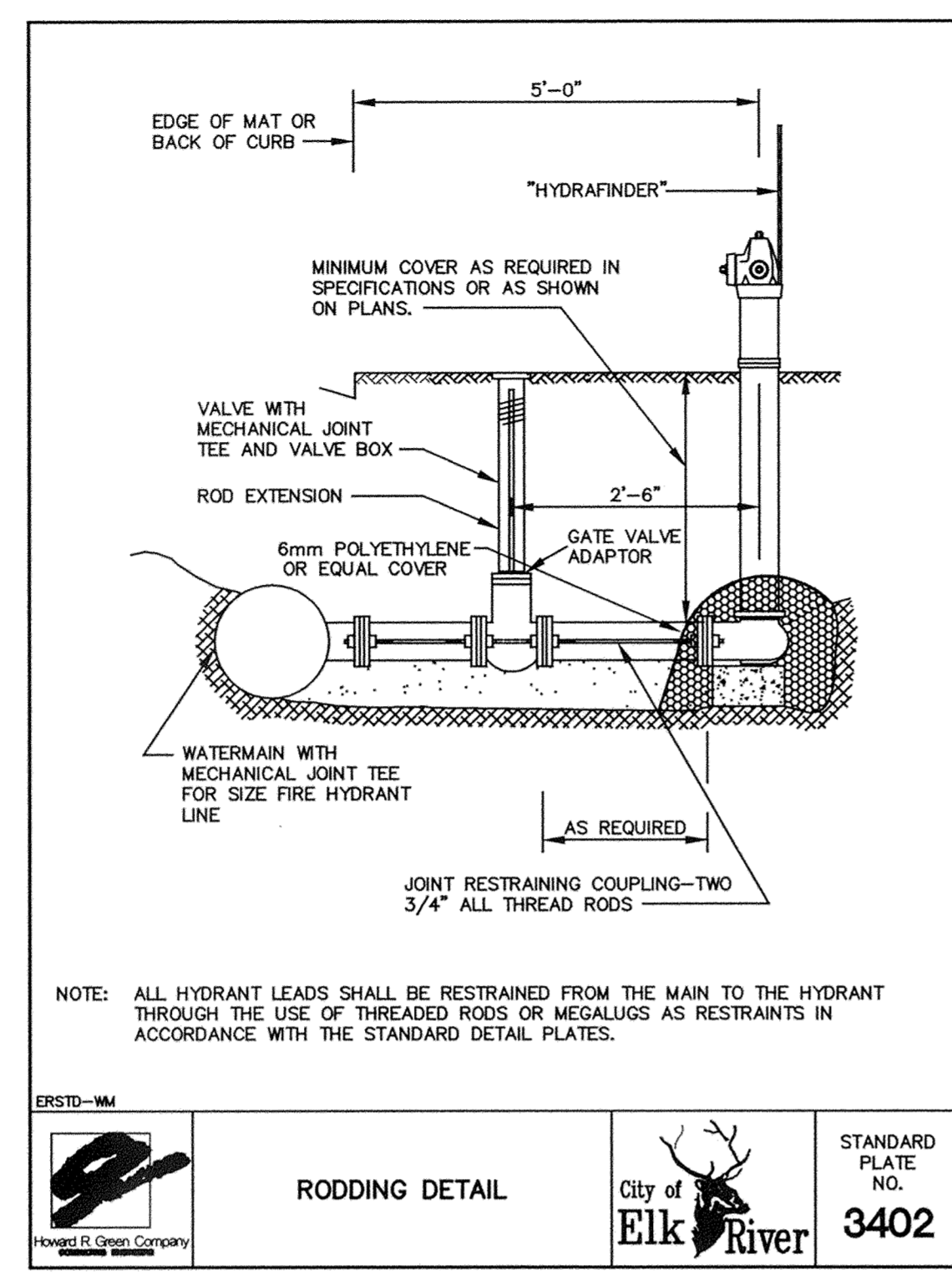
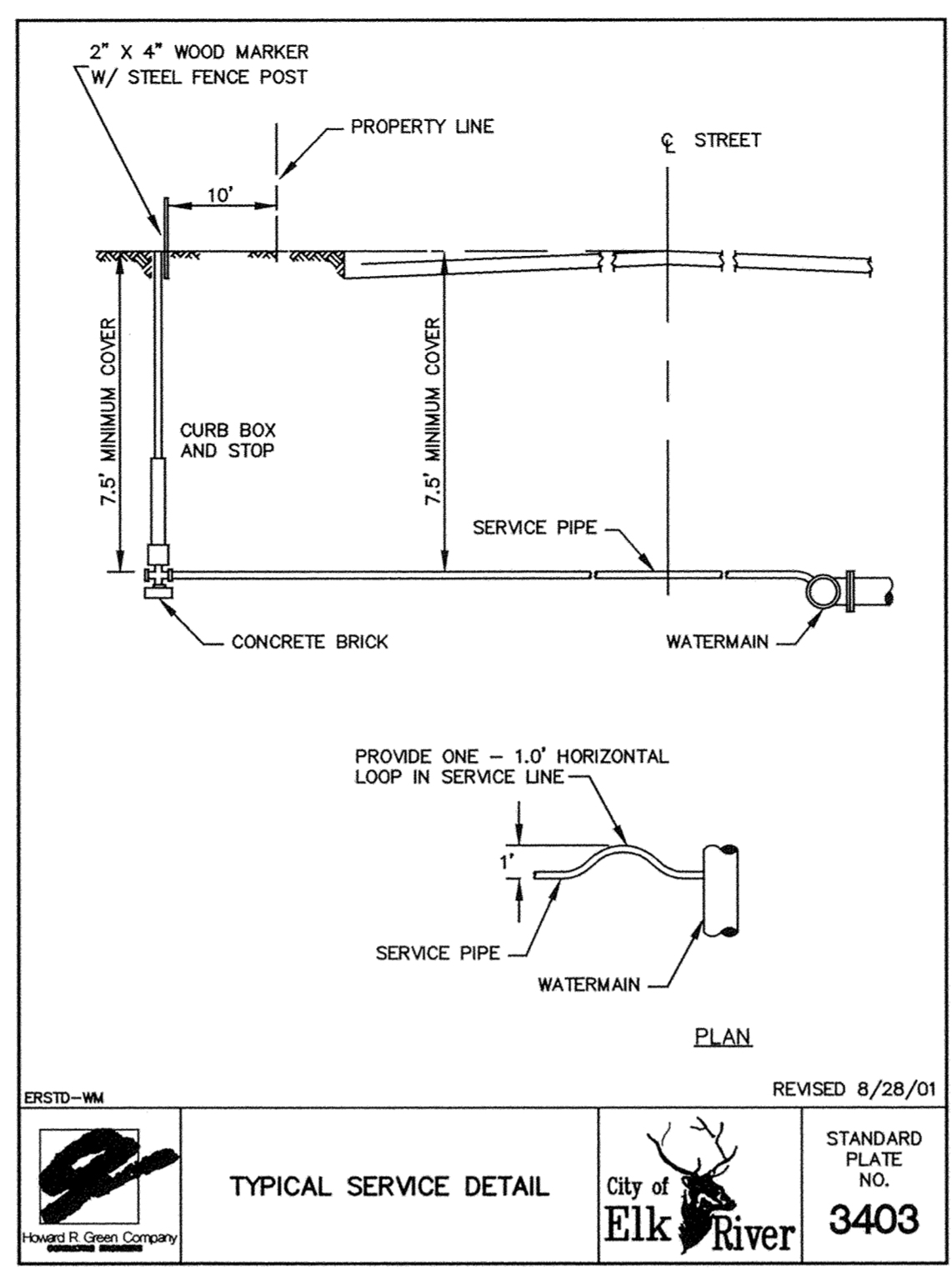
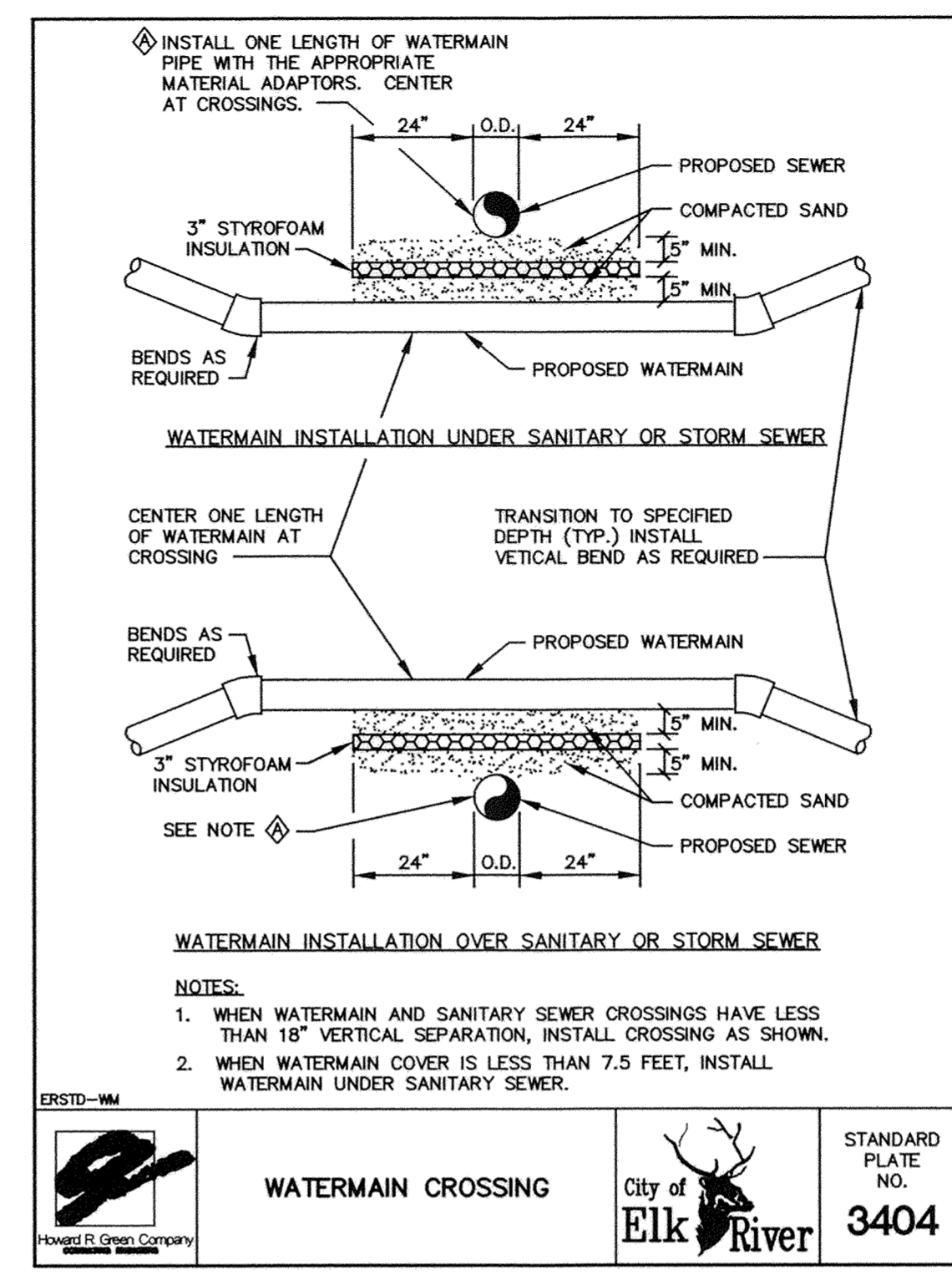
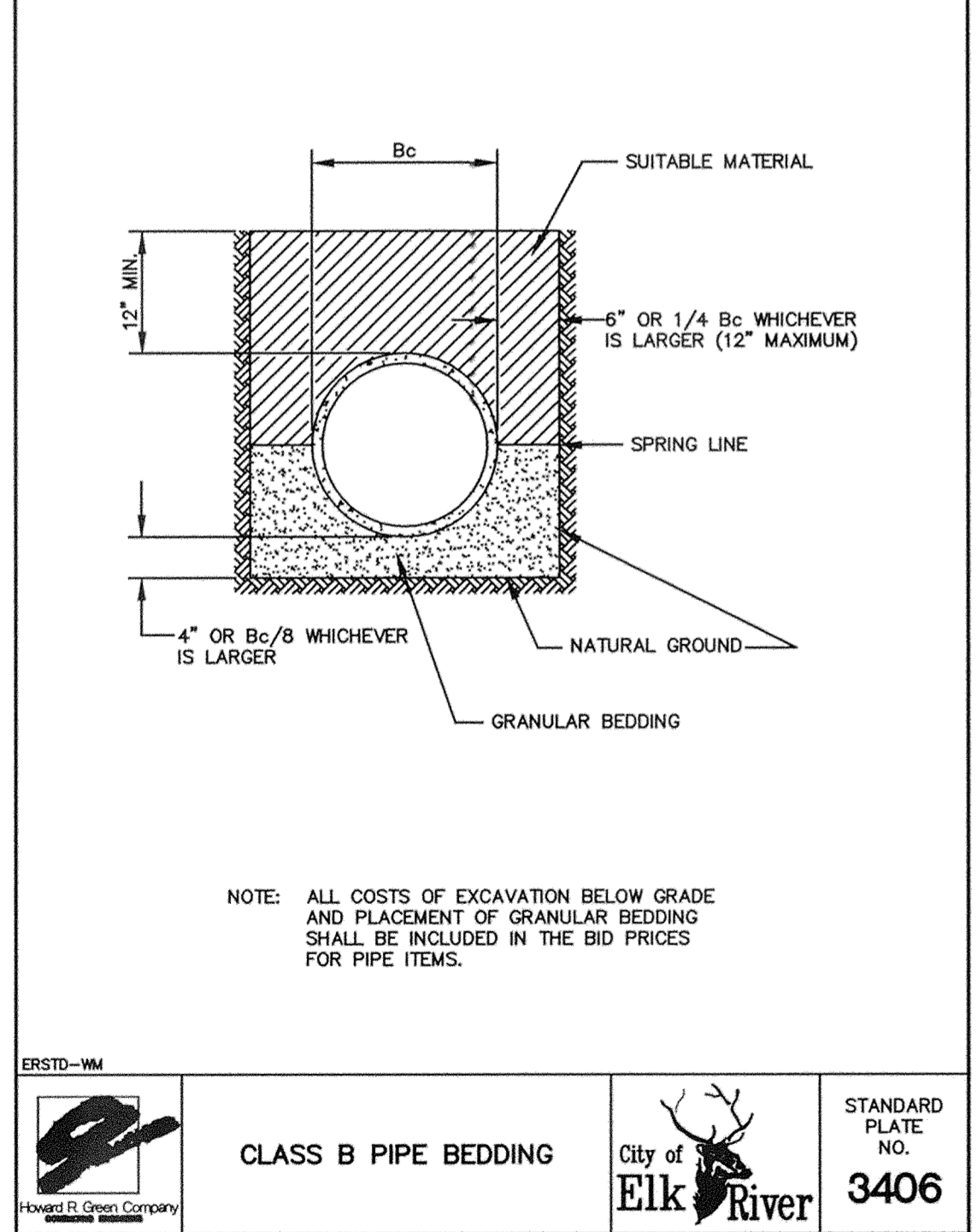
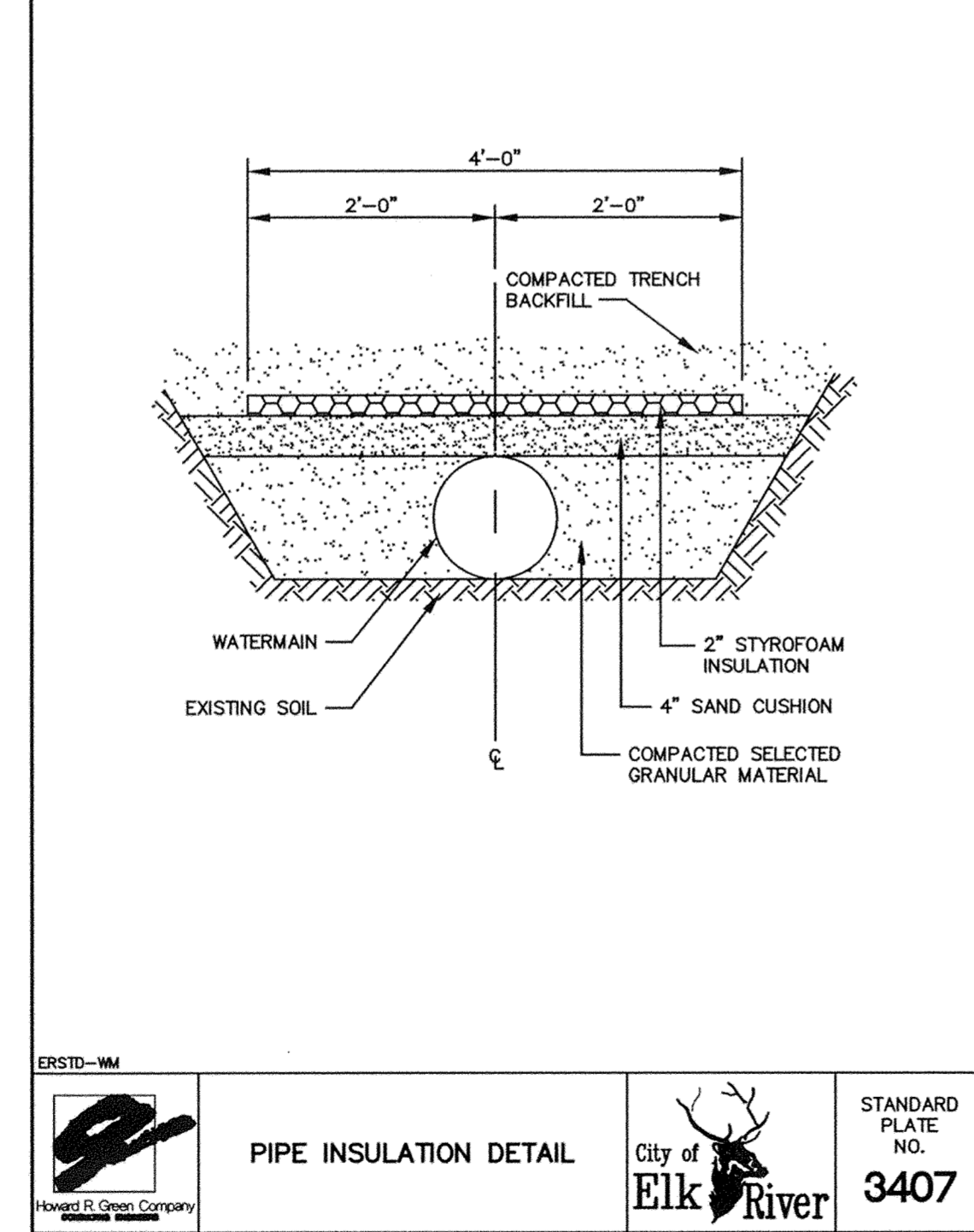


3D PRODUCTS - NEW HOPE, MINNESOTA
REPRODUCED BY PART NUMBER 8532
3D PRODUCTS - NEW HOPE, MINNESOTA
REPRODUCED BY PART NUMBER 8532
3D PRODUCTS - NEW HOPE, MINNESOTA
REPRODUCED BY PART NUMBER 8532
3D PRODUCTS - NEW HOPE, MINNESOTA
REPRODUCED BY PART NUMBER 8532



<p>WACO, LLC</p> <p>01/20/04</p> <p>6,609,852</p> <p>01/20/04</p>	<p>WACO, LLC</p> <p>01/20/04</p> <p>6,609,852</p> <p>01/20/04</p>
<p>SPECIFICATIONS AND STANDARDS</p> <ul style="list-style-type: none"> - AISC MANUAL OF STEEL CONSTRUCTION, 9TH EDITION. - AWS STRUCTURAL WELDING CODE - STEEL, D1.1-94. - 29 CFR 1926 - OSHA SAFETY AND HEALTH STANDARDS. <p>DESIGN LOADS</p> <p>ALLOWABLE AXLE WEIGHT LOAD 20000 LBS.</p> <p>SAFETY FACTOR 2:1</p> <p>WATER FLOW RATE (THROUGH POLYESTER SLEEVES) 0.476 cfs @ 3" head 1.113 cfs @ 6" head</p> <p>WATER FLOW RATE (w/ NO SLEEVES) 1.275 cfs @ 12" head 1.074 cfs @ 15" head</p> <p>MAXIMUM OVERFLOW RATE</p>	<p>SPECIFICATIONS AND STANDARDS</p> <ul style="list-style-type: none"> - AISC MANUAL OF STEEL CONSTRUCTION, 9TH EDITION. - AWS STRUCTURAL WELDING CODE - STEEL, D1.1-94. - 29 CFR 1926 - OSHA SAFETY AND HEALTH STANDARDS. <p>DESIGN LOADS</p> <p>ALLOWABLE AXLE WEIGHT LOAD n/a</p> <p>SAFETY FACTOR n/a</p> <p>WATER FLOW RATE (THROUGH TYPE FF FILTER) 0.707 cfs @ 3" head</p> <p>MAXIMUM OVERFLOW RATE 5.94 cfs @ 15" head</p>
<p>POLYESTER SLEEVE</p> <p>FILTER ASSEMBLY</p> <p>MANHOLE COVER ASSEMBLY</p>	<p>DEFLECTOR PLATE</p> <p>OVERFLOW (O) - CENTER OF FILTER ASSEMBLY</p> <p>OVERFLOW (X) - TOP OF CURB BOX</p> <p>1" FILTER ASSEMBLY</p> <p>CURB</p> <p>CO-23 HIGH-FLOW</p> <p>HIGH-FLOW PRESSURE</p>
<p>AVEM</p> <p>ROAD DRAIN RD-23</p> <p>INLET PROTECTION TOP SLAB MODEL</p>	<p>AVEM</p> <p>ROAD DRAIN CO-23 HIGH-FLOW</p> <p>INLET PROTECTION CURB AND GUTTER MODEL</p>



LA 2/22/06 10:00 AM 2006