

SAECO PRODUCTS • NEW HARBOR, MINNESOTA
REPRODUCED BY PART NUMBER 8032

SAECO PRODUCTS • NEW HARBOR, MINNESOTA
REPRODUCED BY PART NUMBER 8032

SAECO PRODUCTS • NEW HARBOR, MINNESOTA
REPRODUCED BY PART NUMBER 8032

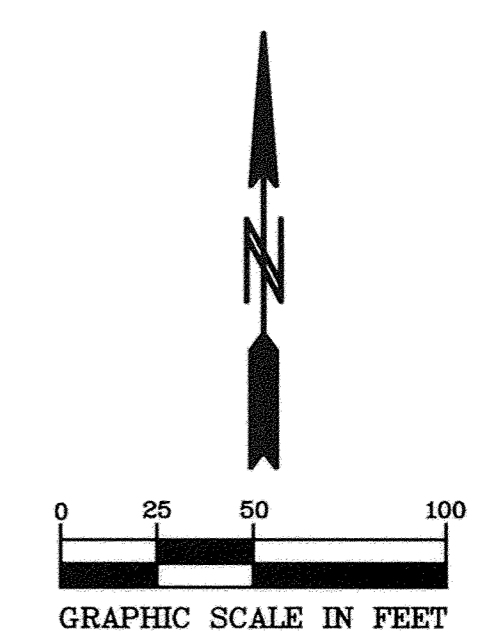
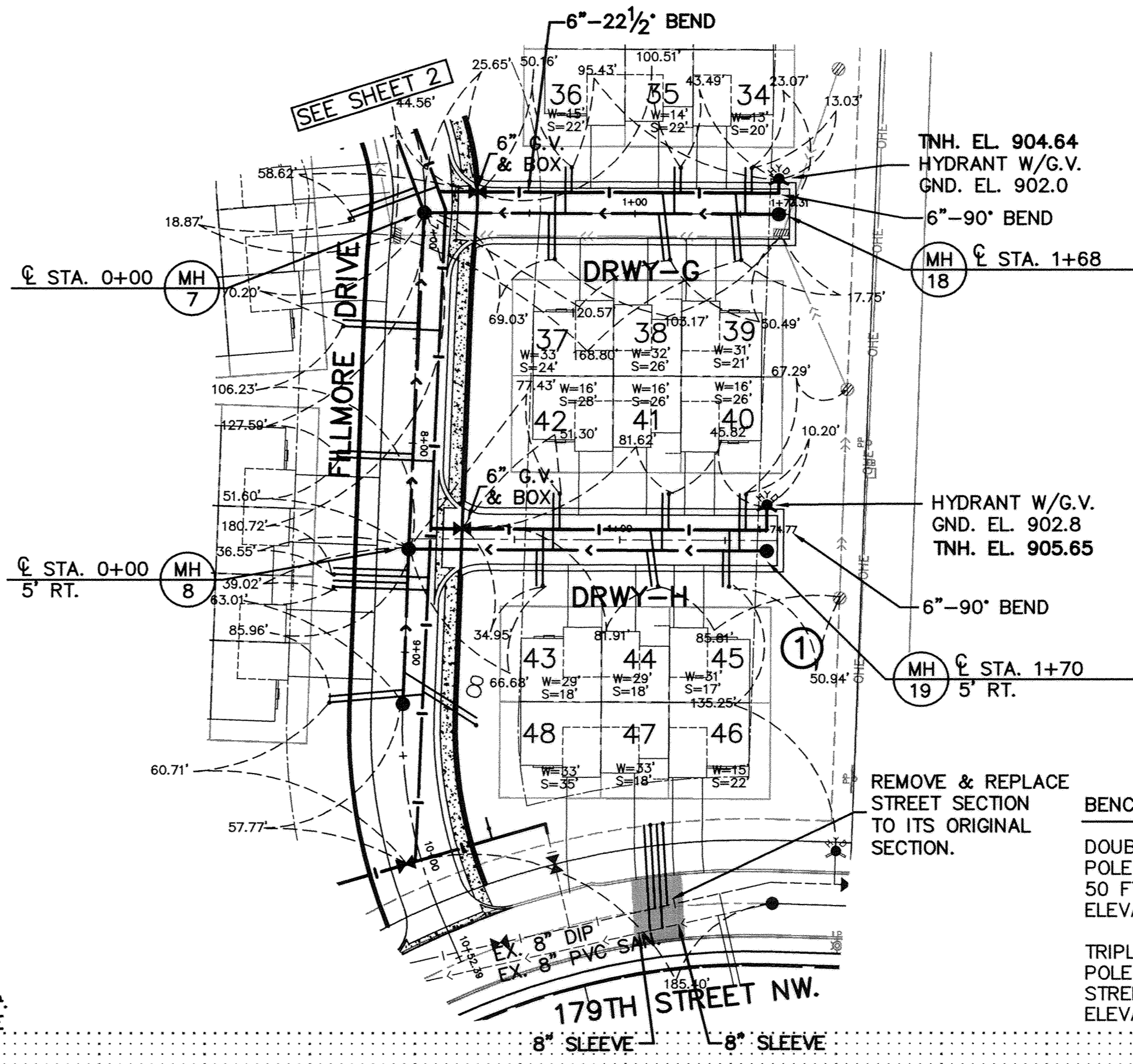
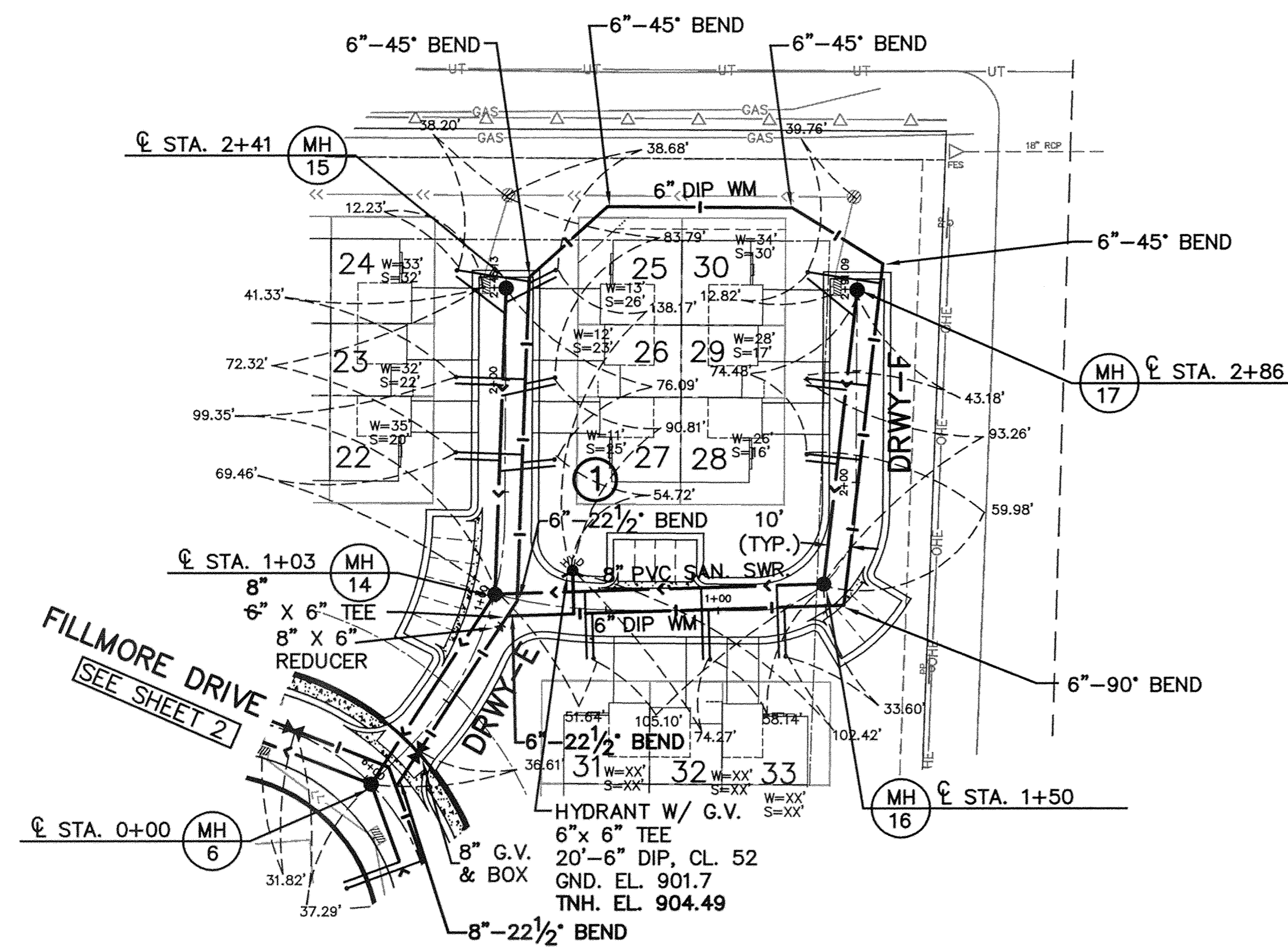
SAECO PRODUCTS • NEW HARBOR, MINNESOTA
REPRODUCED BY PART NUMBER 8032

SANITARY SEWER SERVICES SCHEDULE

LOT	BLOCK	STATION	C.S.	INV. @ CURB STOP
22	1	0+61	901.9	893.9
23	1	0+94	901.7	893.7
24	1	1+26	901.7	893.7
25	1	1+31	901.6	893.6
26	1	0+90	901.8	893.8
27	1	0+56	901.8	893.8
28	1	0+55	901.6	893.6
29	1	0+88	901.5	893.5
30	1	1+21	901.2	893.2
31	1	0+40	902.4	894.4
32	1	0+92	902.3	894.3
33	1	1+25	902.1	894.1
34	1	1+52	902.1	894.1
35	1	1+19	901.9	893.9
36	1	0+67	901.7	893.7
37	1	0+59	901.9	893.9
38	1	1+11	902.0	894.0
39	1	1+45	902.0	894.0
40	1	1+57	903.2	895.2
41	1	1+20	903.1	895.1
42	1	0+69	902.7	894.7
43	1	0+61	902.6	894.6
44	1	1+13	902.9	894.9
45	1	1+49	903.0	895.0
46	1	1+21	905.6	897.6
47	1	1+18	905.6	897.6
48	1	0+59	903.0	895.0

GENERAL NOTES:

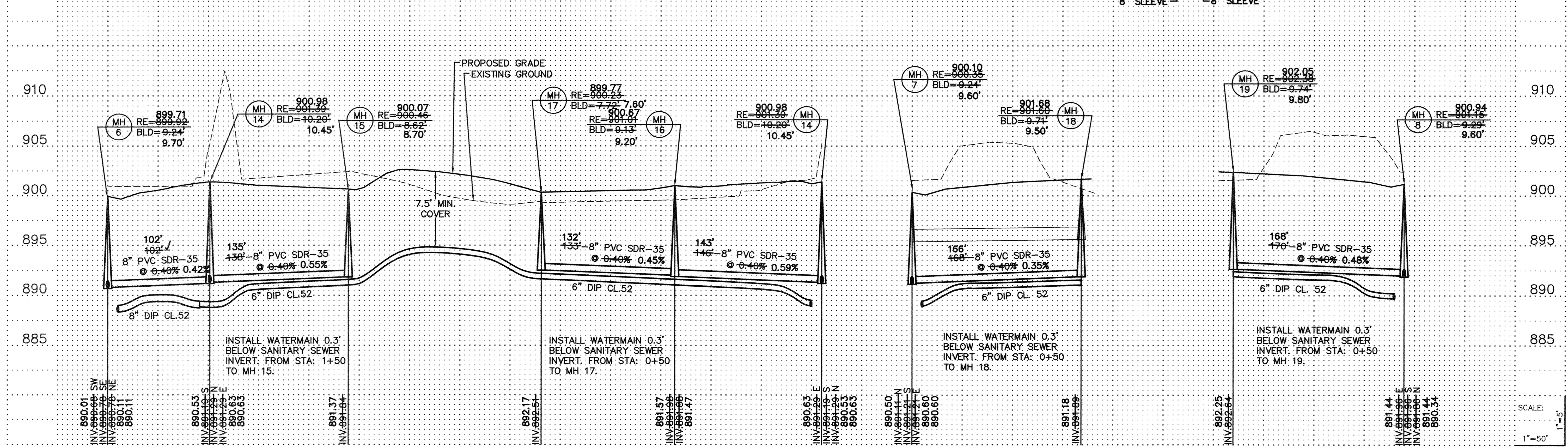
- 1.) SANITARY SEWER SERVICES SHALL BE 4" PVC SDR-26 35'.
- 2.) SANITARY SEWER SERVICE WYES ARE STATIONED FROM DOWN STREAM MANHOLE OR MAINLINE WYE CONNECTION FOR 6" LATERAL RUNS
- 3.) WATER SERVICES SHALL BE 1" COPPER TYPE "K" W/ 7.5" MINIMUM COVER.
- 4.) SANITARY SEWER INVERTS ARE SHOWN AT THE BEND JUST BEFORE THE RISER PIPE.
- 5.) SANITARY SEWER & WATER SERVICES SHALL BE CONSTRUCTED 10' BEYOND RIGHT-OF-WAY. SERVICES ON PRIVATE STREET SHALL BE INSTALLED AT THE LOCATIONS SHOWN ON THE PLANS.
- 6.) EXISTING SERVICES TO BE REMOVED TO THE CURB STOP. CORPORATE.



BENCHMARK

DOUBLE SPIKE EAST FACE OF POWER POLE WEST OF FILMORE STREET NW. 50 FT SOUTH OF 178TH AVE. NW. ELEVATION = 897.82

TRIPLE SPIKE EAST FACE OF POWER POLE NW QUADRANT OF FILMORE STREET AND 175TH AVENUE NW. ELEVATION = 909.73



3. PRE-CON NOTES
2. CITY COMMENTS
1. CITY COMMENTS

I hereby certify that this plan was prepared by me or under my direct supervision and that I am a duly Licensed Professional Engineer under the laws of the State of Minnesota.
Name: Christopher J. Hantley
Reg. No.: 44246
Date: 08/05/05

Revisions:
1. 08/18/05
2. 09/01/05
3. 09/02/05

Date: 08/05/05
Designed: C.J.H.
Drawn: kap

SANITARY SEWER & WATERMAIN

MEADOW CREEK BUILDERS
6382 BALSAM LANE
MAPLE GROVE, MN 55369

KLIEVER LAKE FIELDS 3RD
ELK RIVER, MINNESOTA

RECORD PLAN 2/22/2006

SAECO PRODUCTS • NEW HARBOR, MINNESOTA
REPRODUCED BY PART NUMBER 8032