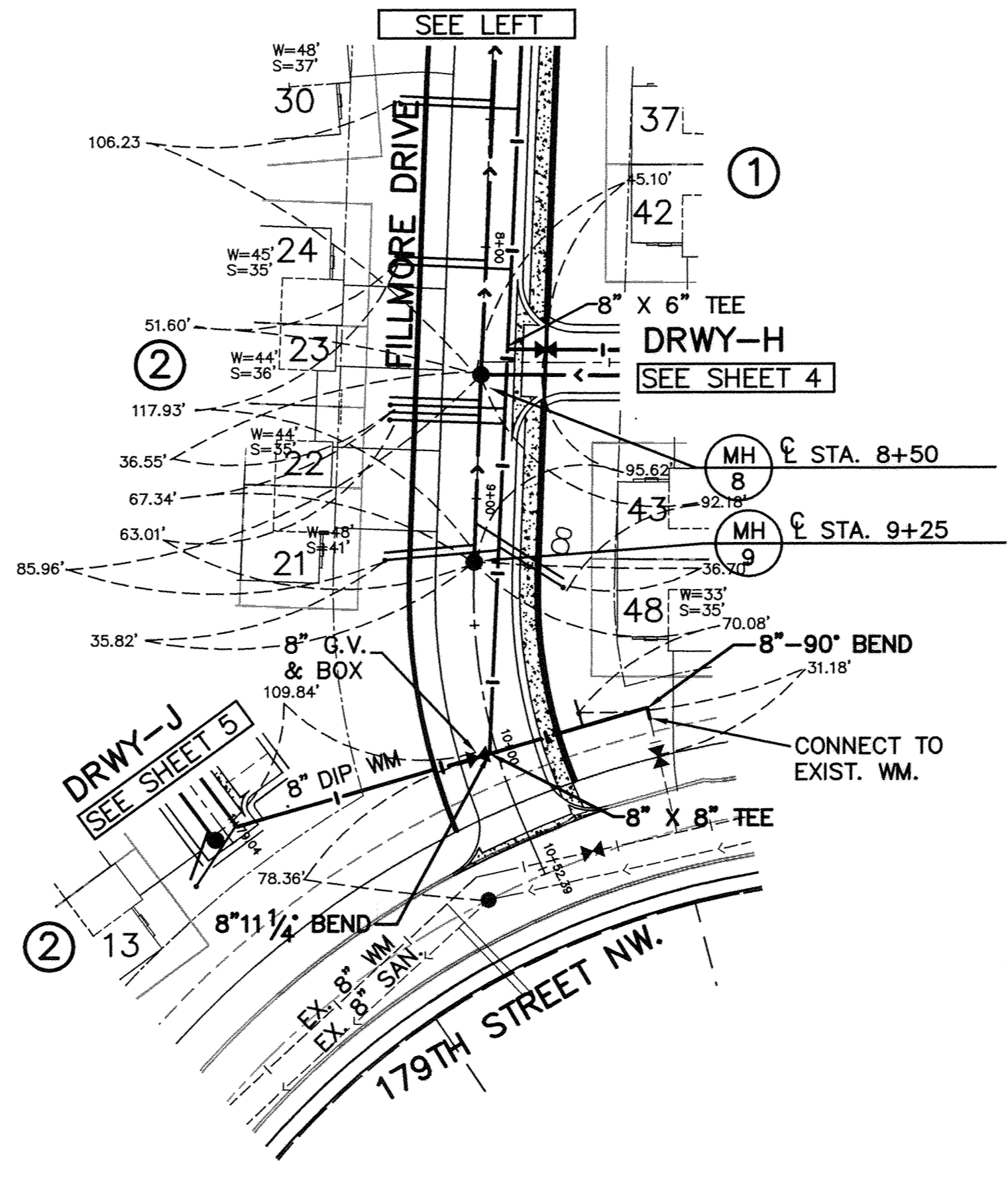
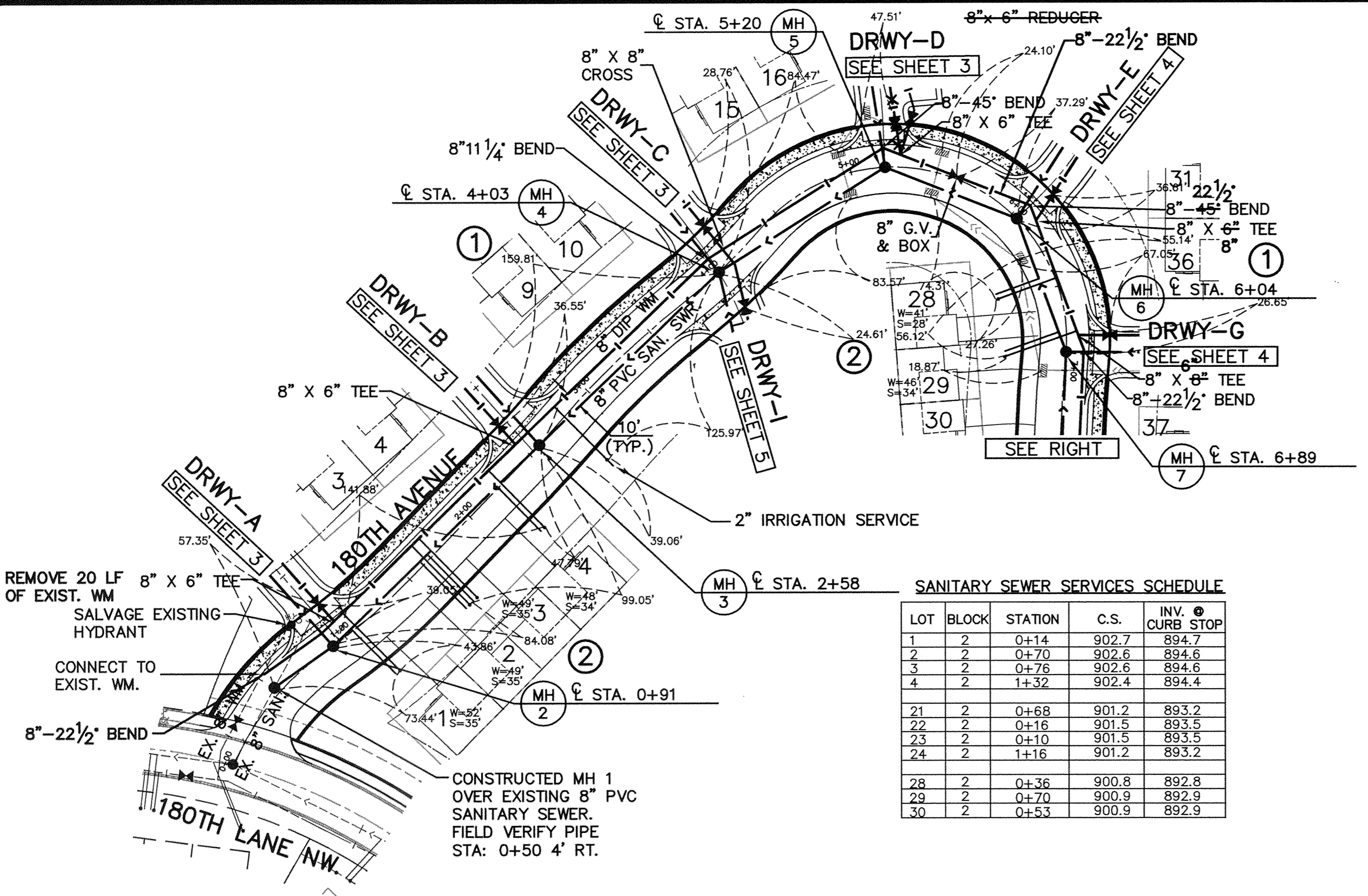
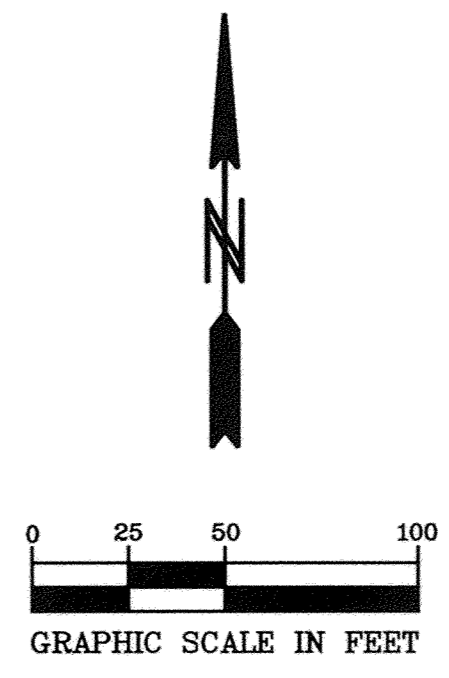


- GENERAL NOTES:
- 1.) SANITARY SEWER SERVICES SHALL BE 4" PVC SDR-35. 26
 - 2.) SANITARY SEWER SERVICE WYES ARE STATIONED FROM DOWN STREAM MANHOLE OR MAINLINE WYE CONNECTION FOR 6" LATERAL RUNS
 - 3.) WATER SERVICES SHALL BE 1" COPPER TYPE "K" W/ 7.5' MINIMUM COVER.
 - 4.) SANITARY SEWER INVERTS ARE SHOWN AT THE BEND JUST BEFORE THE RISER PIPE.
 - 5.) SANITARY SEWER & WATER SERVICES SHALL BE CONSTRUCTED 10' BEYOND RIGHT-OF-WAY. SERVICES ON PRIVATE STREET SHALL BE INSTALLED AT THE LOCATIONS SHOWN ON THE PLANS.
 - 6.) EXISTING SERVICES TO BE REMOVED TO THE CURB STOP. CORPORATE



SANITARY SEWER SERVICES SCHEDULE

LOT	BLOCK	STATION	C.S.	INV. @ CURB STOP
1	2	0+14	902.7	894.7
2	2	0+70	902.6	894.6
3	2	0+76	902.6	894.6
4	2	1+32	902.4	894.4
21	2	0+68	901.2	893.2
22	2	0+16	901.5	893.5
23	2	0+10	901.5	893.5
24	2	1+16	901.2	893.2
28	2	0+36	900.8	892.8
29	2	0+70	900.9	892.9
30	2	0+53	900.9	892.9



BENCHMARK
 DOUBLE SPIKE EAST FACE OF POWER POLE WEST OF FILLMORE STREET NW. 50 FT SOUTH OF 178TH AVE. NW. ELEVATION = 897.82
 TRIPLE SPIKE EAST FACE OF POWER POLE NW QUADRANT OF FILLMORE STREET AND 175TH AVENUE NW. ELEVATION = 909.73

