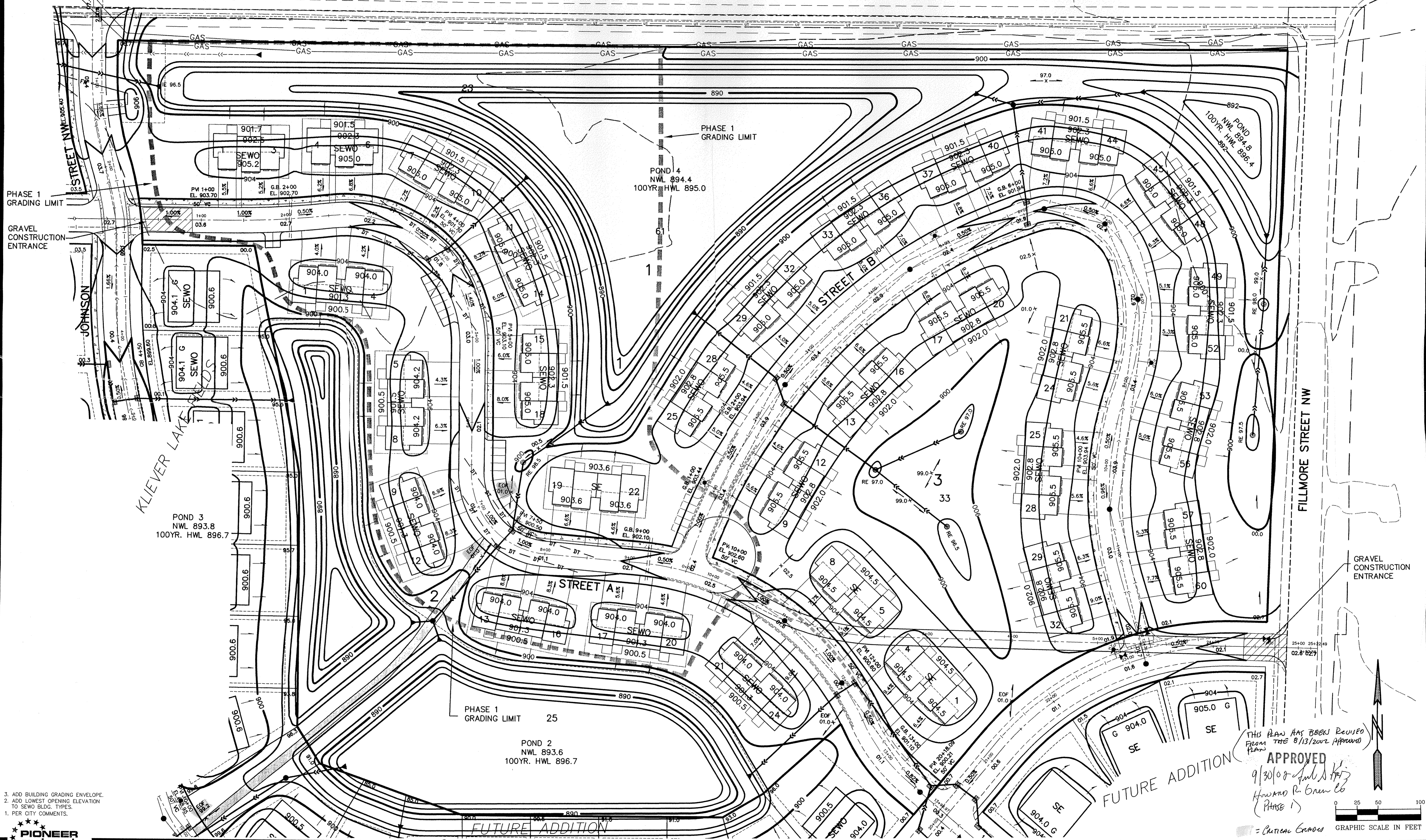


CSAH 12

181ST AVENUE NW



- 3. ADD BUILDING GRADING ENVELOPE.
- 2. ADD LOWEST OPENING ELEVATION TO SEWO BLDG. TYPES.
- 1. PER CITY COMMENTS.

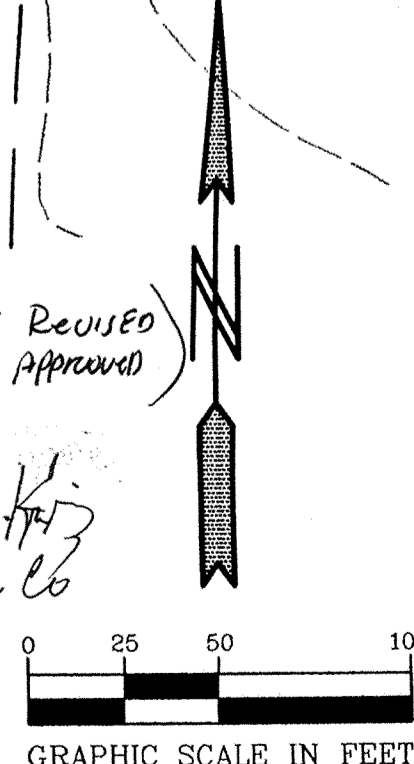
THIS PLAN HAS BEEN REVISED FROM THE 8/13/2002 APPROVAL

APPROVED

9/30/02 *[Signature]*

Howard R. Green Esq.

(Phase 1)



PIONEER engineering PA

2422 Enterprise Drive
 Mendota Heights, MN 55120
 (612) 831-1144 FAX: 612-831-1488
 825 Highway 10 N.E.
 Brainerd, MN 56304
 (763) 763-1800 FAX: 763-1883

I hereby certify that this plan was prepared by me or under my direct supervision and that I am a duly Licensed Professional Engineer under the laws of the State of Minnesota.

Name: *Brian F. Kollio*
 Reg. No.: 25917 Date: 9/18/02

Revisions	Date
1. 8/2/02	3. 8/27/02
2. 8/12/02	4. 9/18/02

Date: 6/5/02
 Designed: PJC
 Drawn: SAG

SHEET TITLE: GRADING, DEVELOPMENT AND EROSION CONTROL PLAN

OWNER: GSS PROPERTIES, LLC
 8857 ZEALAND AVENUE NORTH
 BROOKLYN PARK, MINNESOTA 55445

PROJECT: KLIEVER LAKE FIELDS EAST
 ELK RIVER

SHEET 2 OF 2 SHEETS

J:\p\g\2002\KLIEVER LAKE FIELDS MULTIPLE.VMP\2002\6306.dwg 08/27/2002 11:07:41 AM CDT