

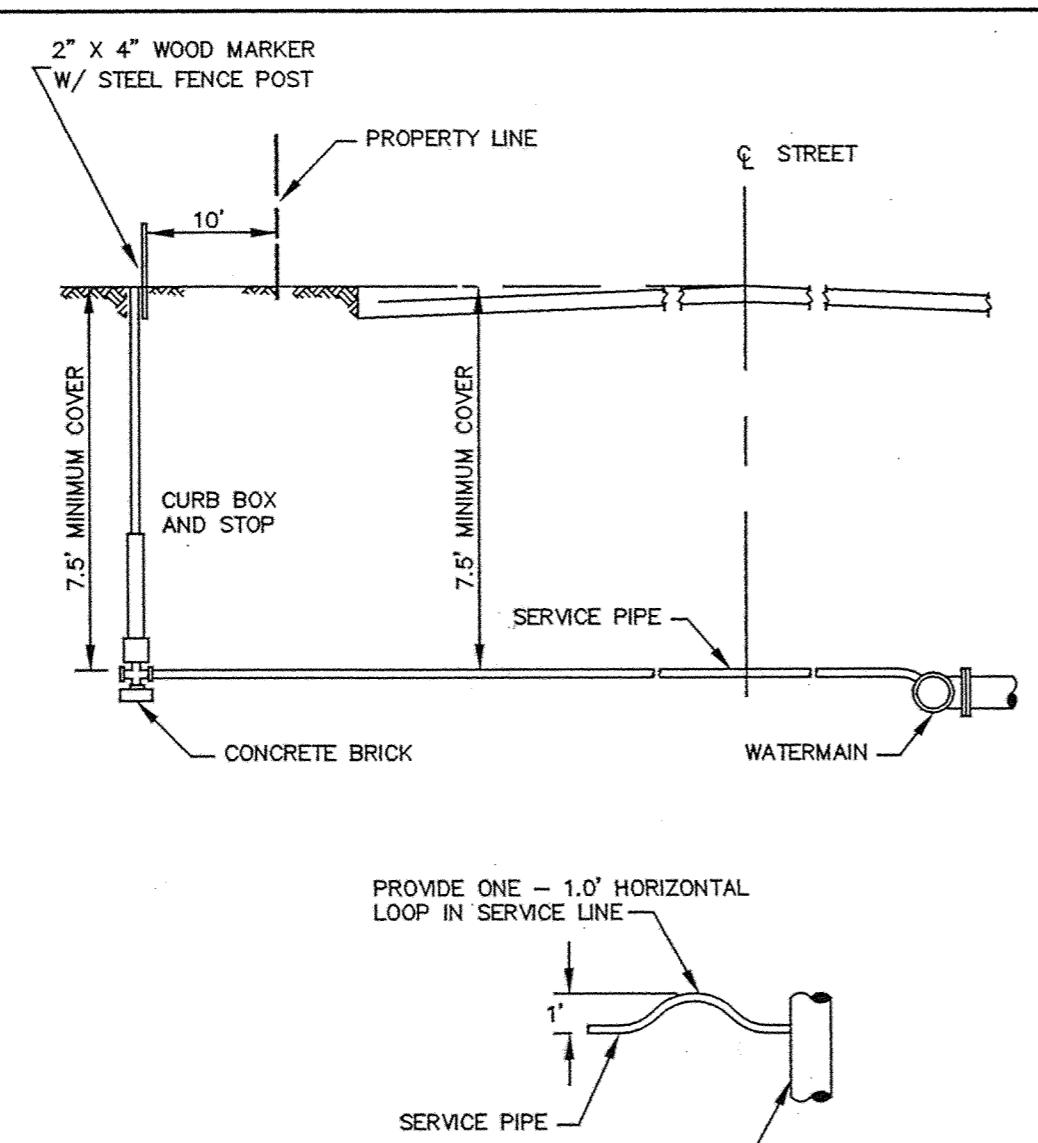
NOTE: ALL HYDRANT LEADS SHALL BE RESTRAINED FROM THE MAIN TO THE HYDRANT THROUGH THE USE OF THREADED RODS OR MEGALUGS AS RESTRAINTS IN ACCORDANCE WITH THE STANDARD DETAIL PLATES.

ERSTD-WM

RODDING DETAIL

City of Elk River

STANDARD PLATE NO. **3402**



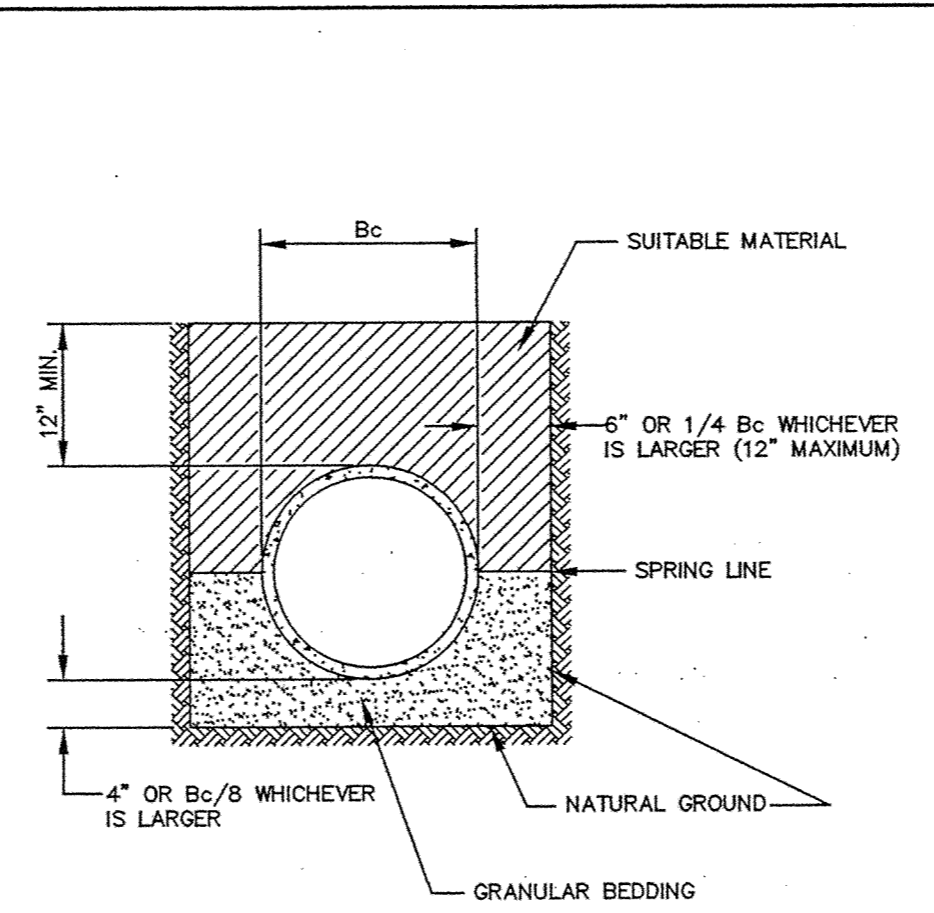
ERSTD-WM

REVISED 8/28/01

TYPICAL SERVICE DETAIL

City of Elk River

STANDARD PLATE NO. **3403**



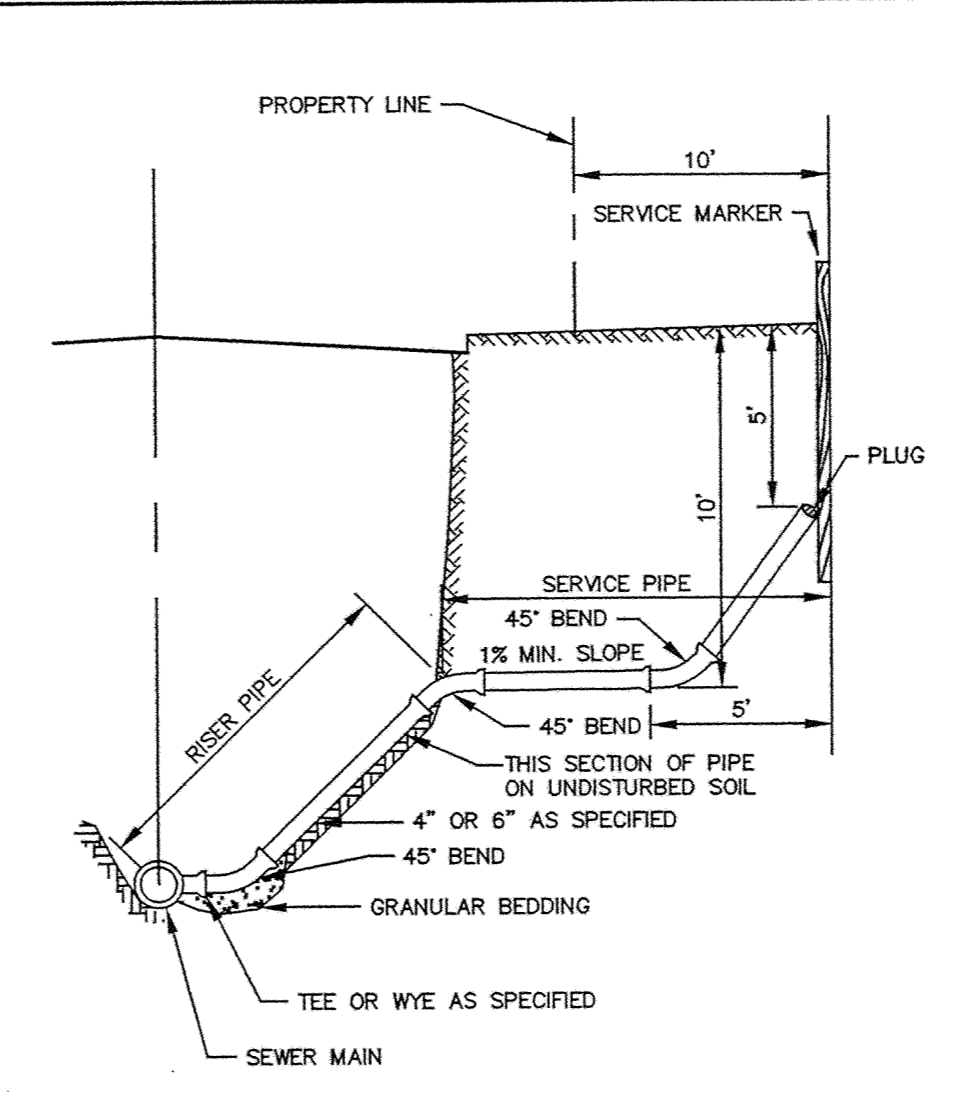
NOTE: ALL COSTS OF EXCAVATION BELOW GRADE AND PLACEMENT OF GRANULAR BEDDING SHALL BE INCLUDED IN THE BID PRICES FOR PIPE ITEMS.

ERSTD-SA

CLASS B PIPE BEDDING

City of Elk River

STANDARD PLATE NO. **4006**



TO BE USED AS SERVICE CONNECTIONS ON DEEP LINES

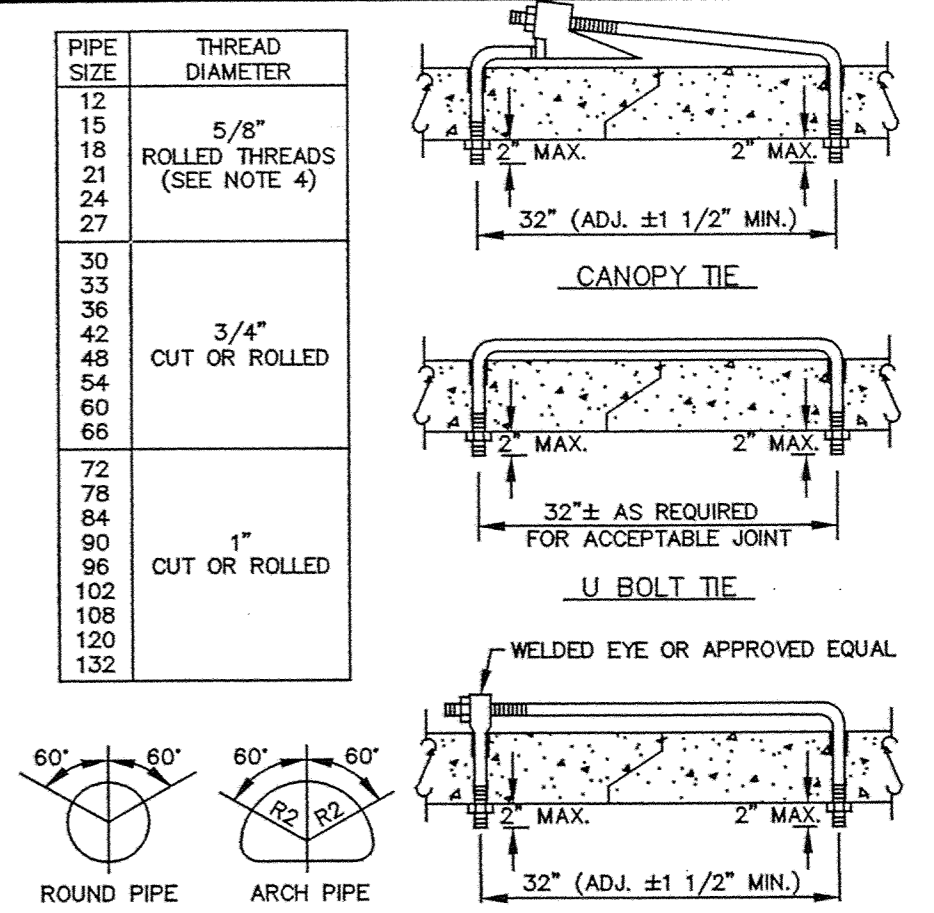
ERSTD-SA

REVISED 8/28/01

SERVICE RISER SECTION

City of Elk River

STANDARD PLATE NO. **4008**



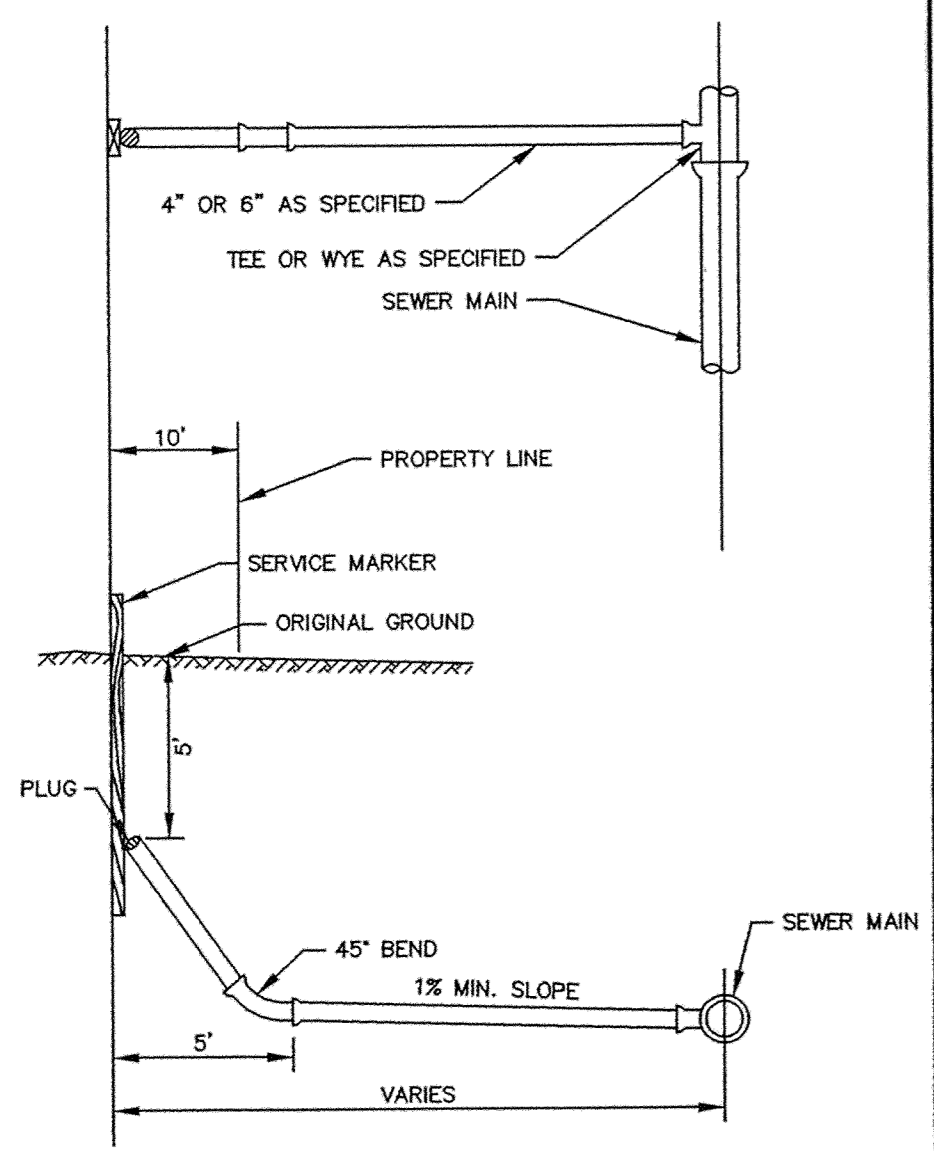
NOTE:
 1. HOLES SHALL BE CAST-IN OR DRILLED 18" FROM OUTSIDE EDGE OF JOINT.
 2. NUTS AND WASHERS ARE NOT REQUIRED ON INSIDE OF PIPE WITH 27" DIAMETER OR LESS.
 3. TIES ARE NOT REQUIRED FOR BELL PIPE 24" AND SMALLER. ON OTHER SIZES, TIE MAY BE INSERTED FROM INSIDE.
 4. CUT THREADS MAY BE USED IF WASHER AND NUT ARE USED.
 5. PIPE SIZES LISTED ARE INSIDE DIAMETER OF ROUND PIPE OR EQUIVALENT DIAMETER OF PIPE ARCH.

ERSTD-SM

CONCRETE PIPE JOINT TIES

City of Elk River

STANDARD PLATE NO. **2503**



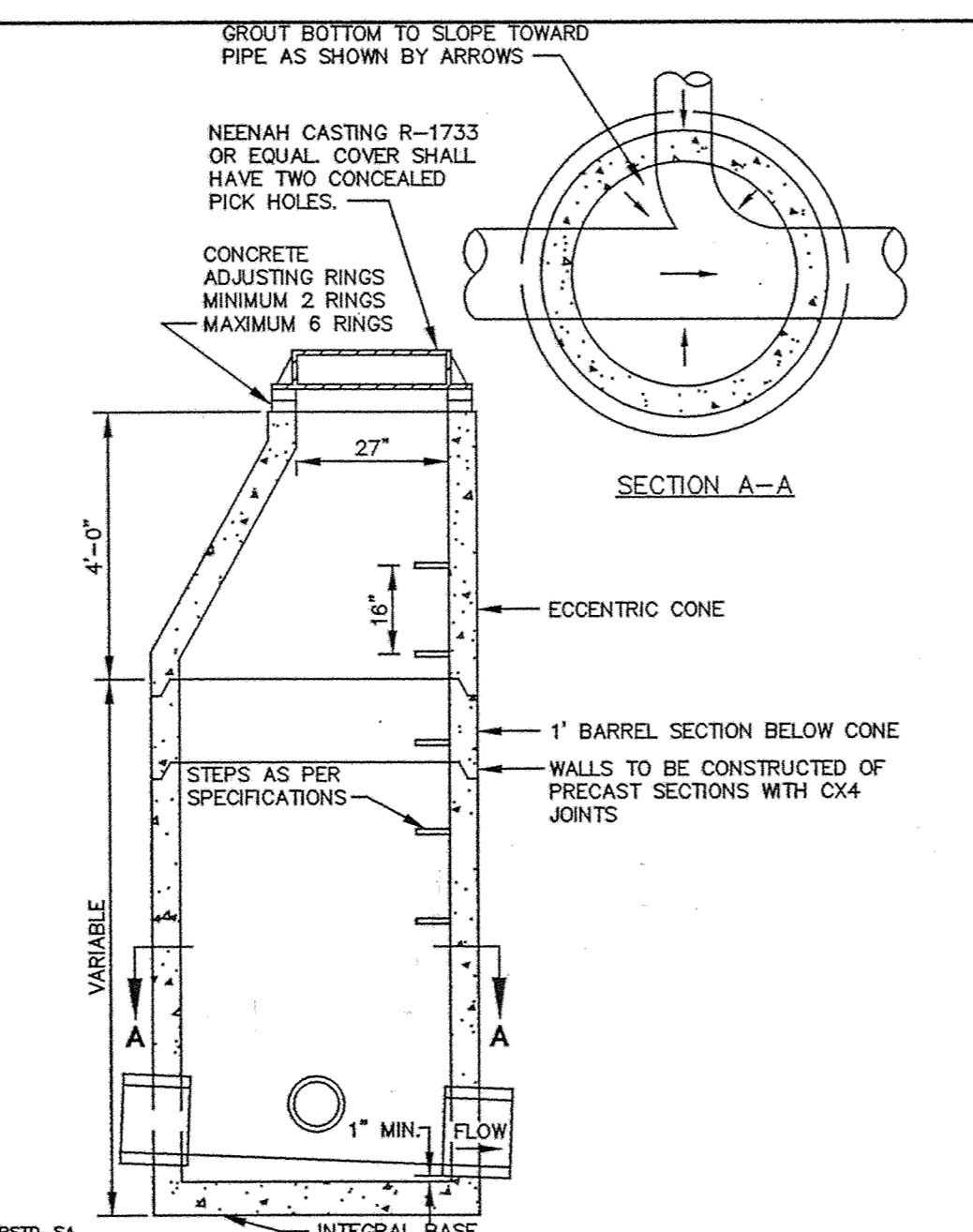
ERSTD-SA

REVISED 8/28/01

TYPICAL HOUSE SERVICE

City of Elk River

STANDARD PLATE NO. **4007**

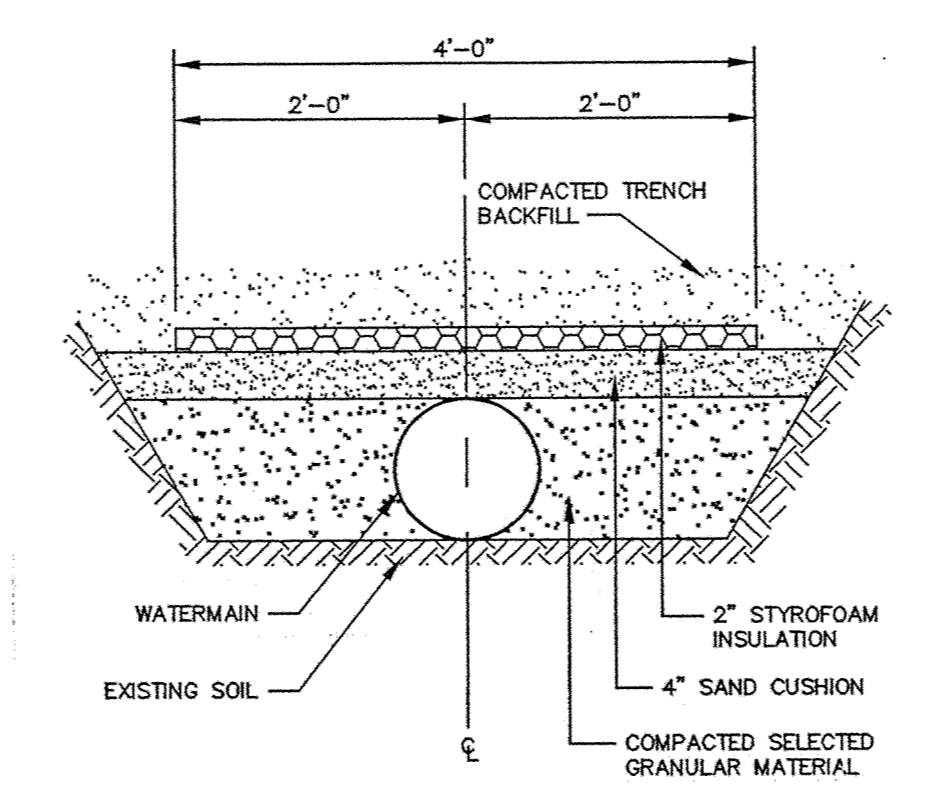


ERSTD-SA

STANDARD MANHOLE

City of Elk River

STANDARD PLATE NO. **4000**

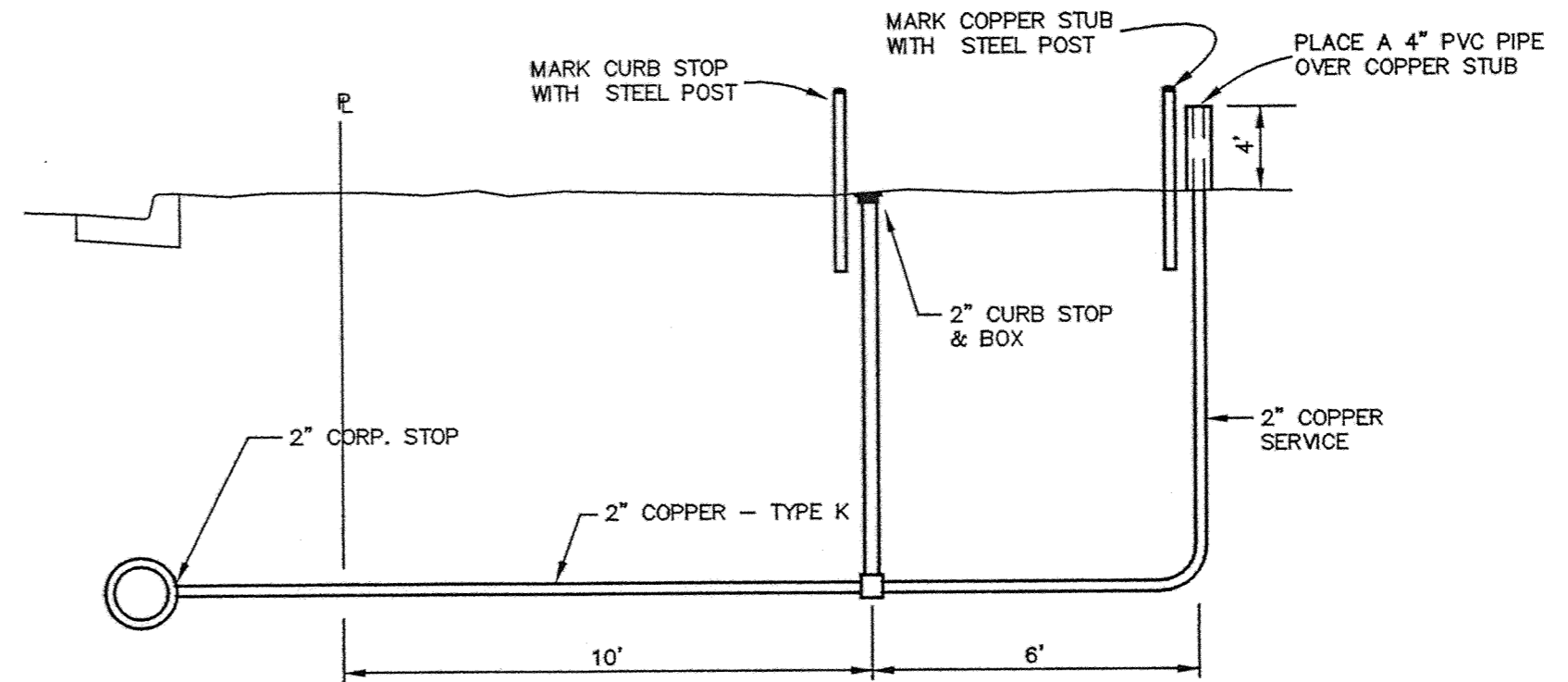


ERSTD-WM

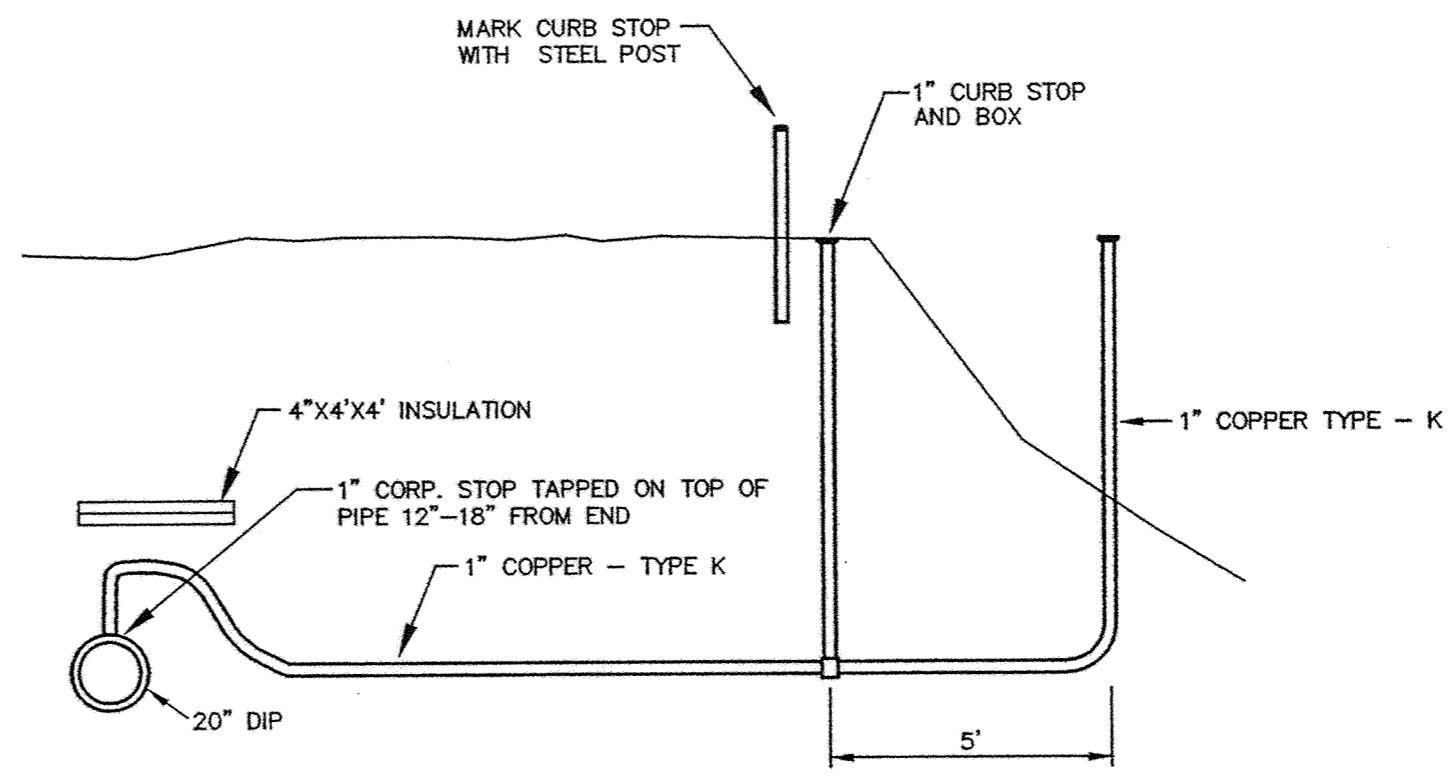
PIPE INSULATION DETAIL

City of Elk River

STANDARD PLATE NO. **3407**



IRRIGATION SERVICE
NOT TO SCALE



BLEEDER VALVE DETAIL

1. AS-BUILTS

I hereby certify that this plan was prepared by me or under my direct supervision and that I am a duly Licensed Professional Engineer under the laws of the State of Minnesota

Name Paul J. Cherno
 Reg. No. 19860 Date _____

Revisions 1. 6/14/05
 Date 6/20/02
 Designed BFK
 Drawn BFK

SHEET TITLE
DETAILS

OWNER **GSS PROPERTIES LLC**
 8857 ZEALAND AVENUE NORTH
 BROOKLYN PARK, MINNESOTA 55445

PROJECT **KLIEVER LAKE FIELDS
 PHASE 2**

RECORD PLAN 6/14/05

SHEET 9 OF 9 SHEETS

SARGO PRODUCTS • NEW HORIZON, MINNESOTA
 REVISIONS BY PART NUMBER 6232
 PREVIOUS EDITIONS OF THIS PLAN
 SARGO PRODUCTS • NEW HORIZON, MINNESOTA
 REVISIONS BY PART NUMBER 6232
 PREVIOUS EDITIONS OF THIS PLAN