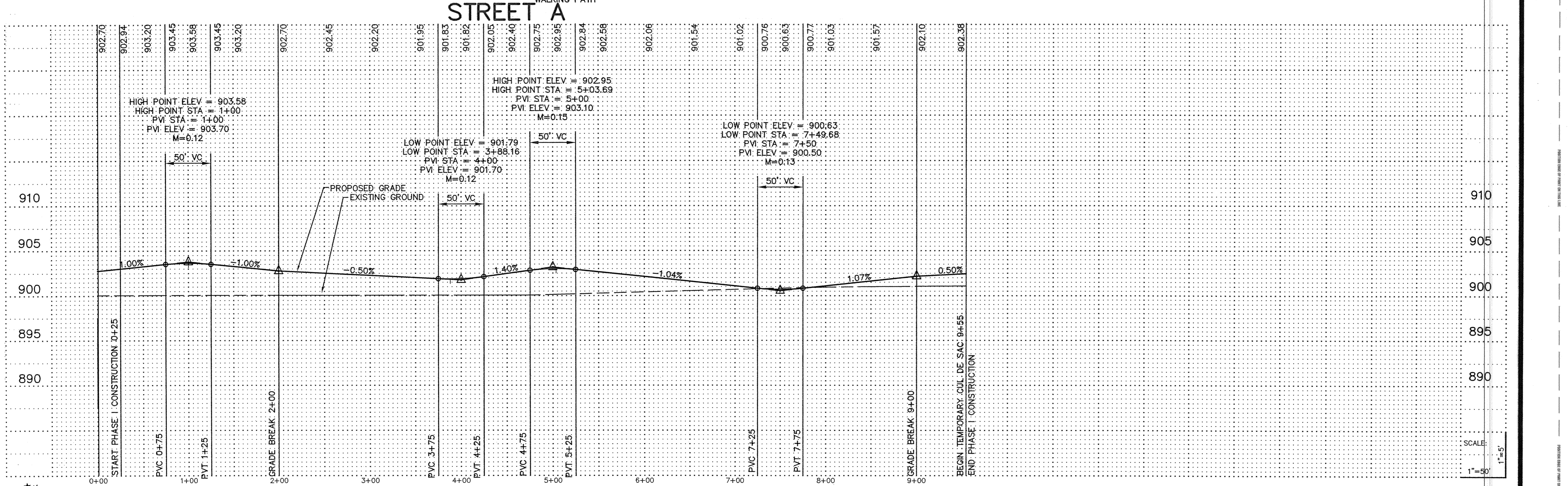
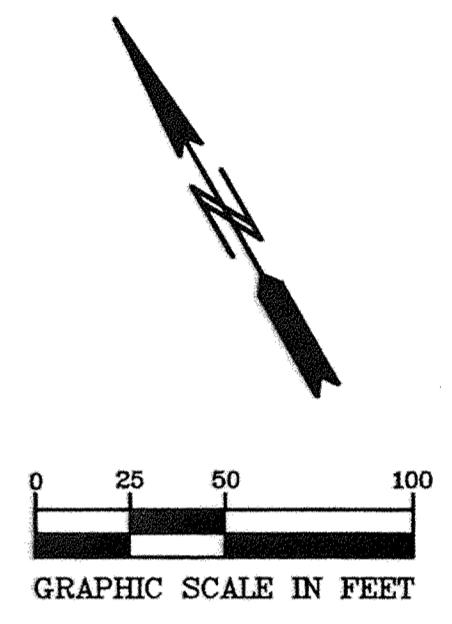
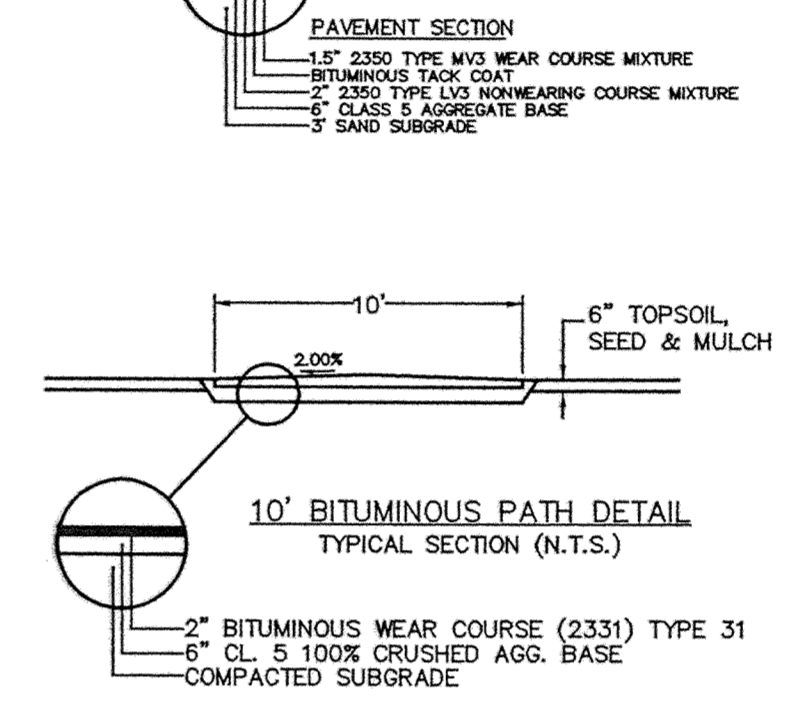
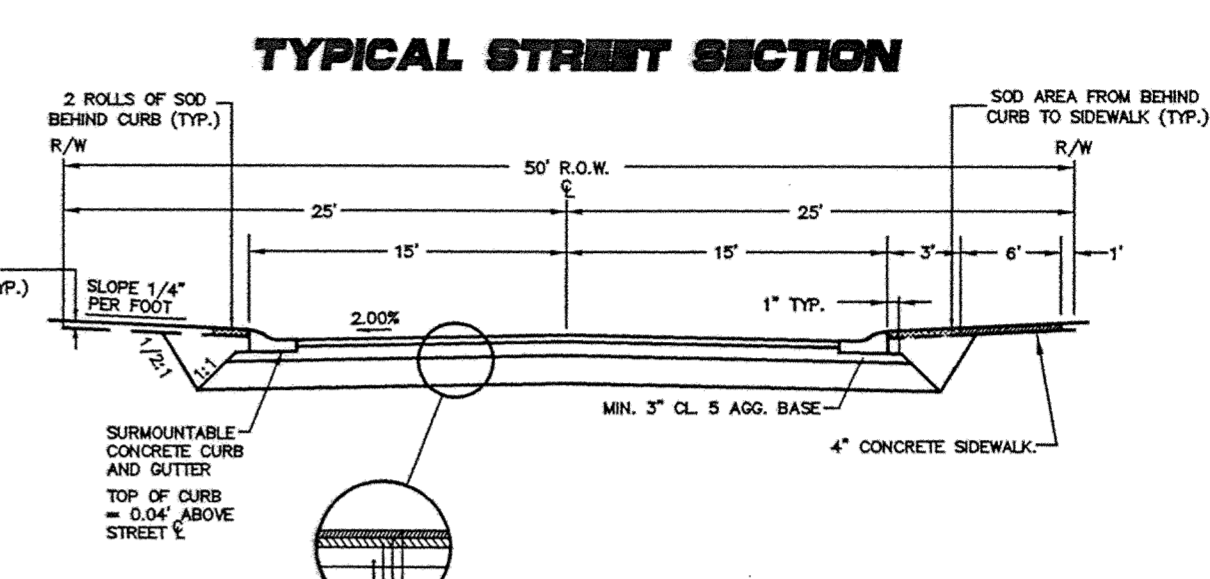


CURB TYPES	
	DENOTES SURMOUNTABLE CONCRETE CURB & GUTTER
	DENOTES B618 CONCRETE CURB & GUTTER
	DENOTES B612 CONCRETE CURB & GUTTER
NOTE: TOP OF CURB ELEV. ARE THE ACTUAL ELEV'S FOR THE TYPE OF CURB SHOWN.	



PIONEER engineering
 LAND SURVEYORS • CIVIL ENGINEERS
 LAND PLANNERS • LANDSCAPE ARCHITECTS
 2422 Enterprise Drive
 Mendota Heights, MN 55120
 (612) 831-3144 FAX: (612) 831-4488
 825 Highway 10 S.E.
 Bloomington, MN 55425
 (763) 783-1880 FAX: 783-1883

I hereby certify that this plan was prepared by me or under my direct supervision and that I am a duly Licensed Professional Engineer under the laws of the State of Minnesota.

Name: Paul J. Chappie
 Reg. No.: 19550 Date: 10/07/02

Revisions:
 1. 10/07/02
 2. 6/14/05
 1. ASSESS 3RD UTILITY CROSSING

Date: 10/07/02
 Designed: BFK
 Drawn: BFK

SHEET TITLE: STREET CONSTRUCTION

OWNER: GSS PROPERTIES LLC
 8857 ZEALAND AVENUE NORTH
 BROOKLYN PARK, MINNESOTA 55445

PROJECT: KLIEVER LAKE FIELDS EAST
 ELK RIVER, MINNESOTA

RECORD PLAN 6/14/05
 SHEET 5 OF 9 SHEETS

J:\1700\200376-KLIEVER LAKE FIELDS MULTIPLE.DWG 06/12/02

SAICD PRODUCTS • NEW HORIZON, MINNESOTA
 REVISIONS BY PART NUMBER 6502
 PREPARED BY: PAUL J. CHAPPIE
 SAICD PRODUCTS • NEW HORIZON, MINNESOTA
 REVISIONS BY PART NUMBER 6502
 PREPARED BY: PAUL J. CHAPPIE
 SAICD PRODUCTS • NEW HORIZON, MINNESOTA
 REVISIONS BY PART NUMBER 6502
 PREPARED BY: PAUL J. CHAPPIE