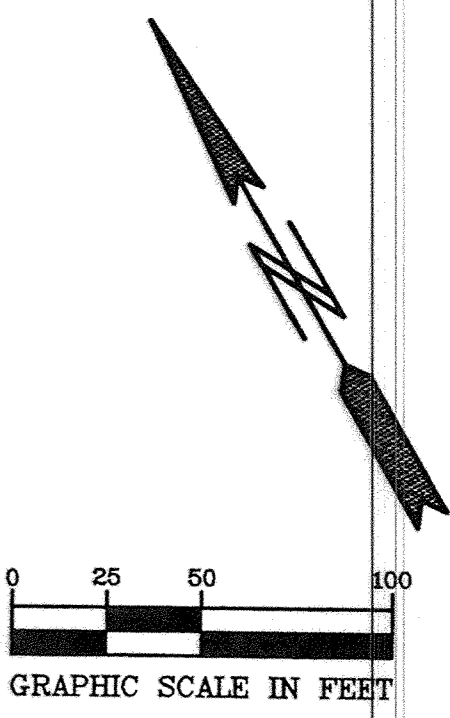
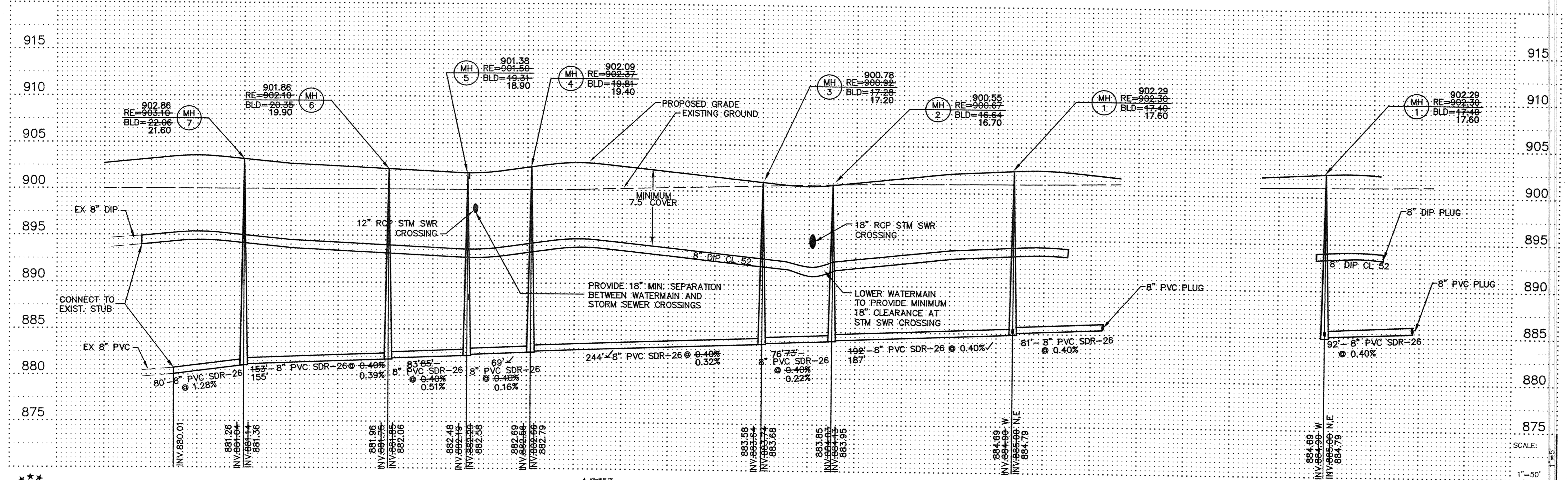


- GENERAL NOTES:**
- SANITARY SEWER SERVICES SHALL BE 4" PVC SDR-35.
  - SANITARY SEWER SERVICE WYES ARE STATIONED FROM DOWN STREAM MANHOLE, OR MAINLINE WYE CONNECTION FOR 6" LATERAL RUNS.
  - WATER SERVICES SHALL BE 1" COPPER TYPE "K" W/ 7.5' MINIMUM COVER.
  - SANITARY SEWER INVERTS ARE SHOWN AT THE BEND JUST BEFORE THE RISER PIPE.
  - SANITARY SEWER & WATER SERVICES SHALL BE CONSTRUCTED 10' BEYOND RIGHT-OF-WAY. SERVICES ON PRIVATE STREET SHALL BE INSTALLED AT THE LOCATIONS SHOWN ON THE PLANS.

LOT/BLOCK	STA.	RISER	C.S.	INV. @ C.S.
1/1	1+16	12' LT.	904.54	895.54
2/1	1+43	11' LT.	904.23	895.23
3/1	0+43	11' LT.	903.80	894.80
1/2	0+60	9' RT.	903.25	894.25
4/1	0+78	10' LT.	903.81	894.81
5/1	1+04	9' LT.	903.67	894.67
2/2	1+14	9' RT.	903.10	894.10
3/2	1+16	9' RT.	903.07	894.07
6/1	1+39	9' LT.	903.61	894.61
7/1	1+43	8' LT.	903.27	894.27
4/2	0+18	8' RT.	902.84	893.84
8/1	0+44	8' LT.	903.15	894.15
9/1	0+48	8' LT.	903.13	894.13
10/1	0+74	8' LT.	903.03	894.03
11/1	0+13	7' LT.	903.04	894.04
12/1	0+52	8' LT.	903.31	894.31
13/1	0+56	8' LT.	903.38	894.38
14/1	0+28	8' LT.	903.73	894.73
15/1	0+36	8' LT.	903.79	894.79
5/2	0+68	8' RT.	903.46	894.46
16/1	0+89	7' LT.	903.60	894.60
17/1	0+93	7' LT.	903.55	894.55
6/2	1+20	7' RT.	903.13	894.13
7/2	1+23	7' RT.	903.07	894.07
18/1	1+43	7' LT.	903.21	894.21
8/2	1+74	6' RT.	902.72	893.72
9/2	1+86	6' RT.	902.51	893.51
10/2	2+34	6' RT.	902.25	893.25
11/2	2+37	6' RT.	902.21	893.21
12/2	0+27	5' RT.	901.95	892.95
13/2	0+55	5' RT.	901.92	892.92
14/2	0+12	5' RT.	902.09	893.09
15/2	0+15	5' RT.	902.13	893.13
19/1	0+23	5' LT.	902.06	893.06
16/2	0+65	5' RT.	902.47	893.47
20/1	0+76	5' LT.	902.41	893.41
21/1	0+80	5' LT.	902.47	893.47
17/2	0+92	5' RT.	902.68	893.68
22/1	1+29	5' LT.	902.79	893.79
18/2	1+44	5' RT.	902.96	893.96
19/2	1+48	5' RT.	902.99	893.99
20/2	1+80	5' RT.	903.17	894.17



SEE SHEET 3



**PIONEER engineering**  
 PA  
 2422 Enterprise Drive  
 Mendota Heights, MN 55120  
 (651) 881-1914 FAX 681-0480  
 625 Highway 15 S.E.  
 Bloomington, MN 55425  
 (763) 753-1880 FAX 753-1883

I hereby certify that this plan was prepared by me or under my direct supervision and that I am a duly Licensed Professional Engineer under the laws of the State of Minnesota.

Name: *Paul J. Cheng*  
 Reg. No.: 19860 Date: 10/7/02

4. AS-BUILTS  
 3. CHANGE BLOCK NUMBER IN SERVICE STATION TABLE  
 2. CHANGE LAYOUT AND SERVICES  
 1. DELETE TEMPORARY HYDRANT & PLUG AT STA. 10+25, STREET A.

Revisions:  
 1. 8/15/02  
 2. 10/7/02  
 3. 3/31/03  
 4. 6/14/05

Date: 10/7/02  
 Designed: BFK  
 Drawn: BFK  
 SHEET TITLE: SANITARY SEWER AND WATERMAIN

OWNER: GSS PROPERTIES LLC  
 8857 ZEALAND AVENUE NORTH  
 BROOKLYN PARK, MINNESOTA

PROJECT: KLIEVER LAKE FIELDS EAST  
 ELK RIVER, MINNESOTA

RECORD PLAN 6/14/05  
 SHEET 2 OF 9 SHEETS