

2422 Hennepin Avenue  
Minneapolis, MN 55412  
Phone: 612-338-8000  
Fax: 612-338-8001  
www.pioneer-engineering.com

**PIONEER**  
ENGINEERING  
LAND ENGINEERS  
LAND PLANNERS  
LAND SURVEYORS  
LANDSCAPE ARCHITECTS

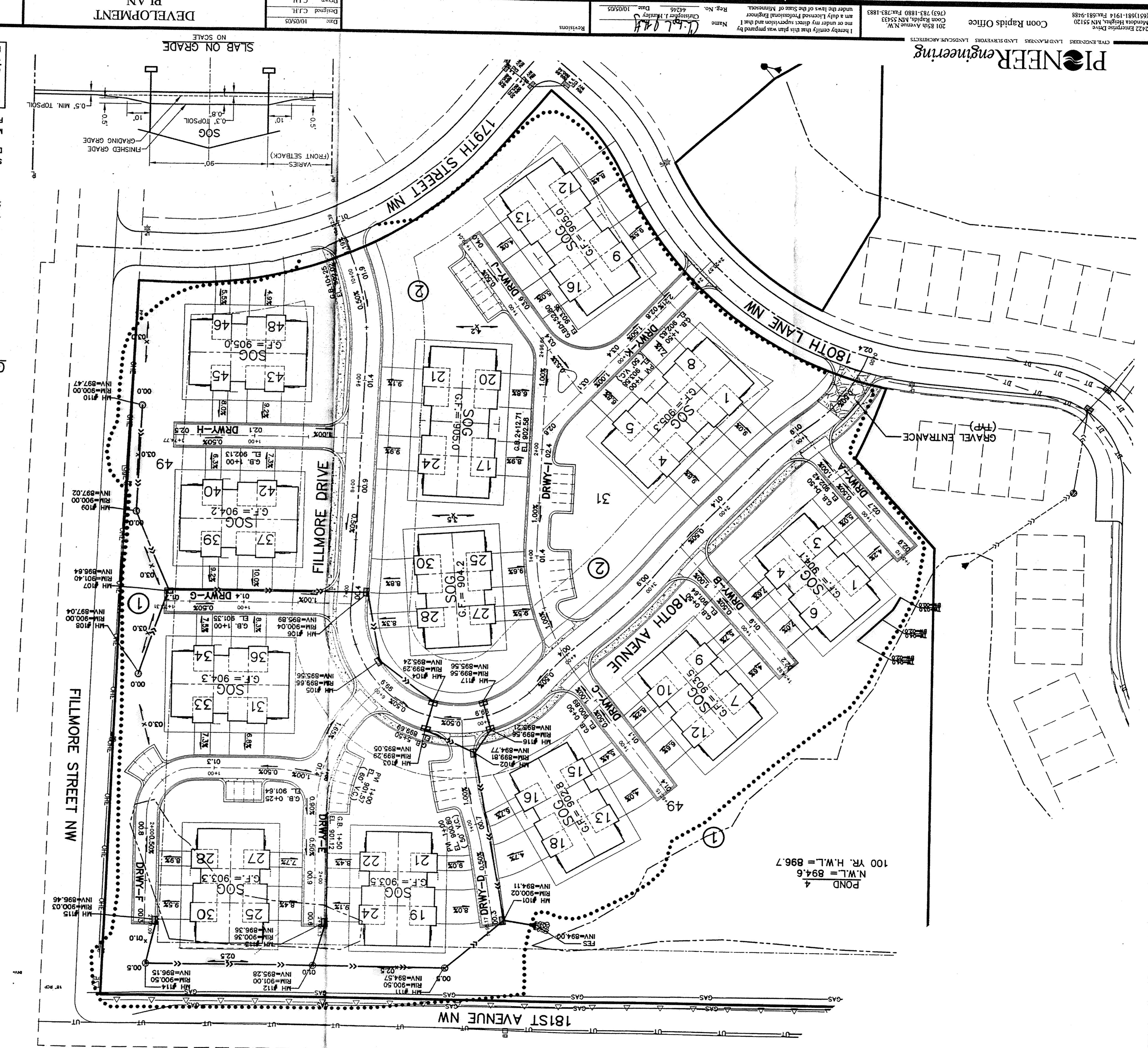
Coon Rapids Office  
201 5th Avenue NW  
Coon Rapids, MN 55433  
(763) 783-1880 Fax: (763) 783-1883

I hereby certify that this plan was prepared by  
me or under my direct supervision and that I  
am a duly Licensed Professional Engineer  
under the laws of the State of Minnesota.  
Name: **D.L. Harty**  
Registration No.: **44266**  
Date: **10/05/05**

Date: **10/05/05**  
Designed: **C.H.**  
Drafted: **C.H.**  
NO SCALE  
**DEVELOPMENT PLAN**

**MEADOW CREEK BUILDERS**  
6882 BALSAM LANE  
MAPLE GROVE, MN 55369

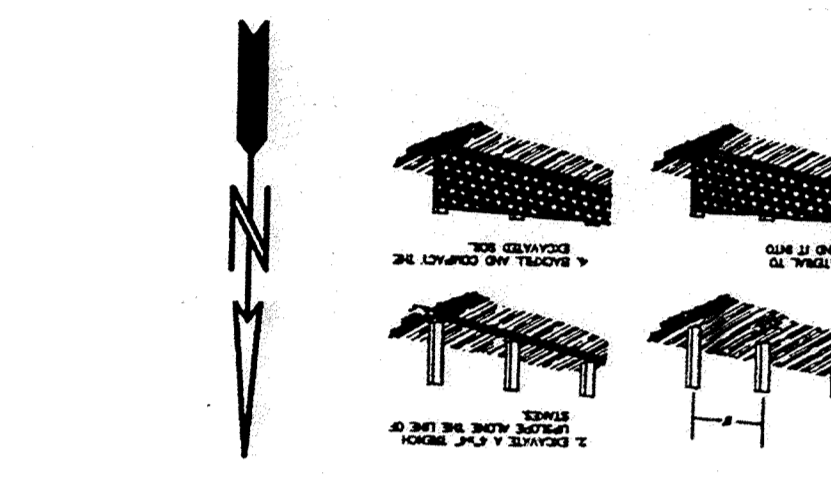
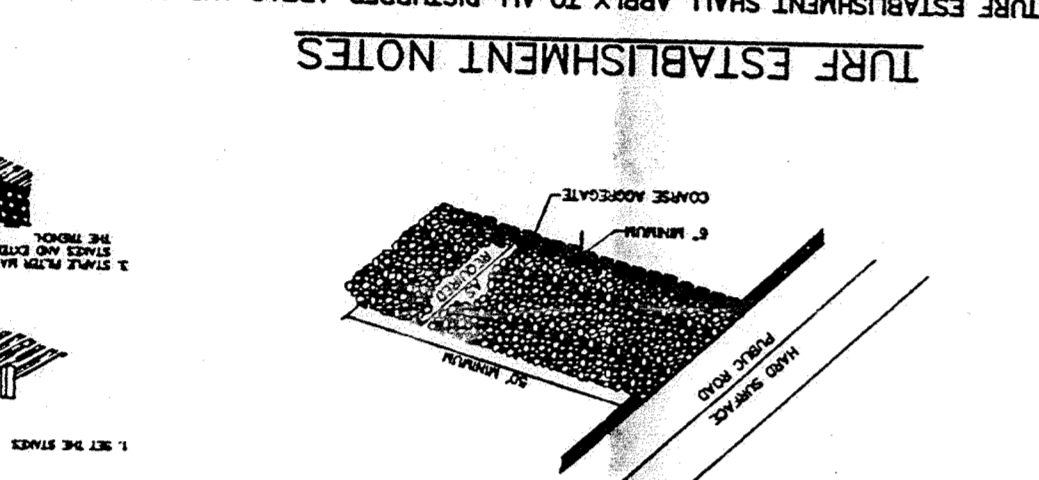
**KLIEBER LAKE FIELDS 3RD**  
ELM RIVER, MINNESOTA



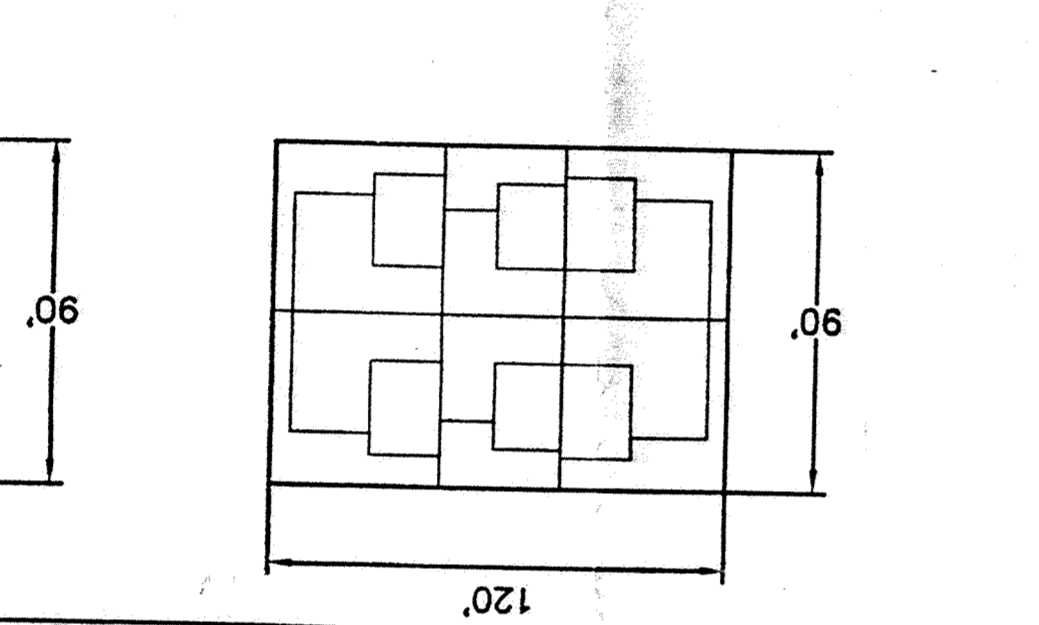
**TURF ESTABLISHMENT NOTES**

TURF ESTABLISHMENT SHALL APPLY TO ALL DISTURBED AREAS AND SHALL BE ACCORDING TO MNDOT 2575 EXCEPT AS MODIFIED BELOW.  
—WITHIN ONE (1) WEEK FOR SLOPES 3:1 OR GREATER.  
—WITHIN TWO (2) WEEKS FOR SLOPES BETWEEN 3:1 AND 10:1.  
—WITHIN THREE (3) WEEKS FOR SLOPES 10:1 OR LESS.  
SEED - MANDOT MIXTURE 250 AT 70 POUNDS PER ACRE.  
DORMANT SEED - SHALL BE APPLIED AFTER NOVEMBER 1 AT TWICE THE NORMAL RATE.  
MULCH - TYPE 1 AT 2 TONS PER ACRE DISK ANCHORED.  
FERTILIZER - TYPE 24-12-24 AT 300 POUNDS PER ACRE.  
Prior to any excavation the contractor shall verify the location of all underground utilities.  
Call 48 Hours before digging:  
GOPHER STATE ONE CALL  
(651) 454-0002  
Twin City Area  
1-800-252-1166  
MN Toll Free

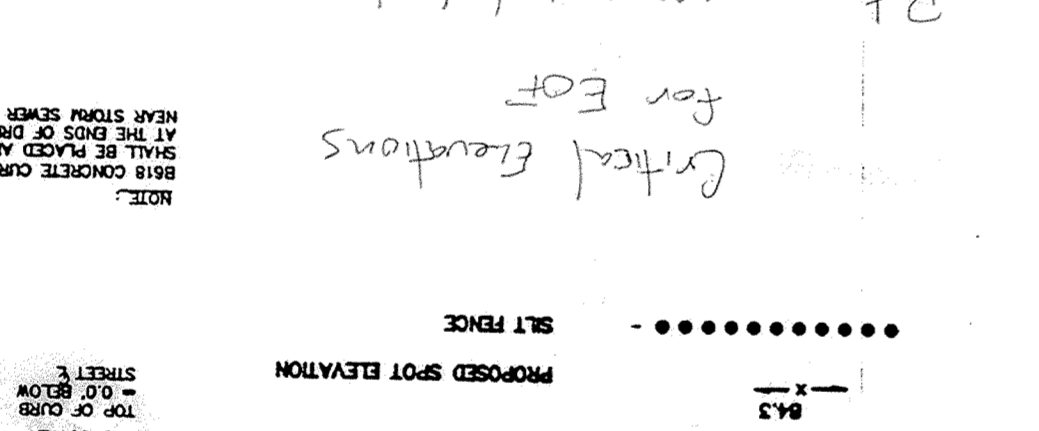
**DOUBLE SPIKE EAST FACE OF POWER POLE WEST OF FILLMORE STREET NW.**  
ELEVATION = 897.82  
**TRIPLE SPIKE EAST FACE OF POWER STREET AND 175TH AVENUE NW.**  
ELEVATION = 909.73



**GRAVEL CONSTRUCTION ENTRANCE**



**BUILDING ENVELOPES**



**LEGEND**

