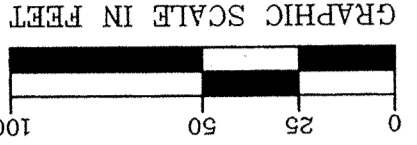
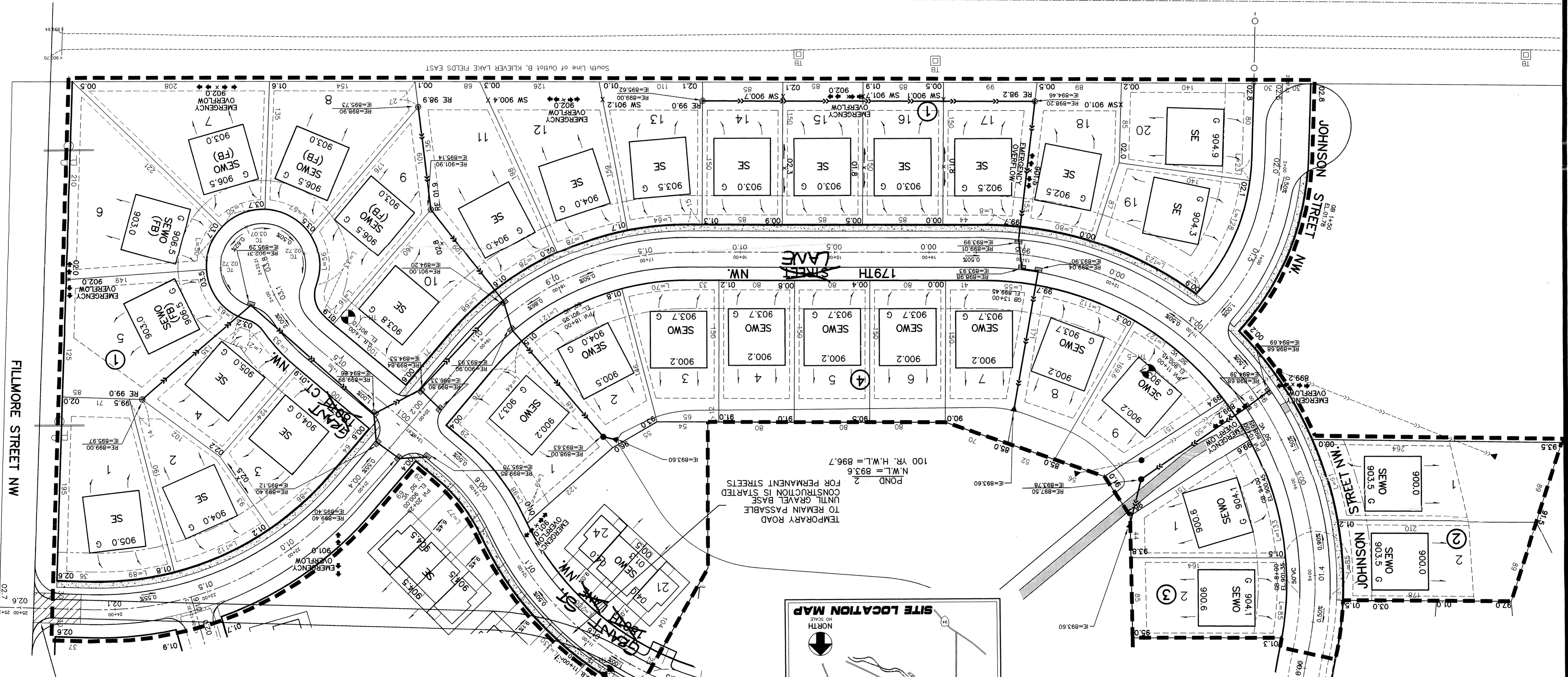


BENCHMARKS
 DOUBLE SPIKE EAST FACE OF POWER POLE,
 504 FT. SOUTH OF 178TH AVENUE N.W.,
 ELEVATION = 897.82 FT.
 TRIPLE SPIKE EAST FACE OF POWER POLE,
 175TH AVENUE N.W.,
 ELEVATION = 899.73 FT.

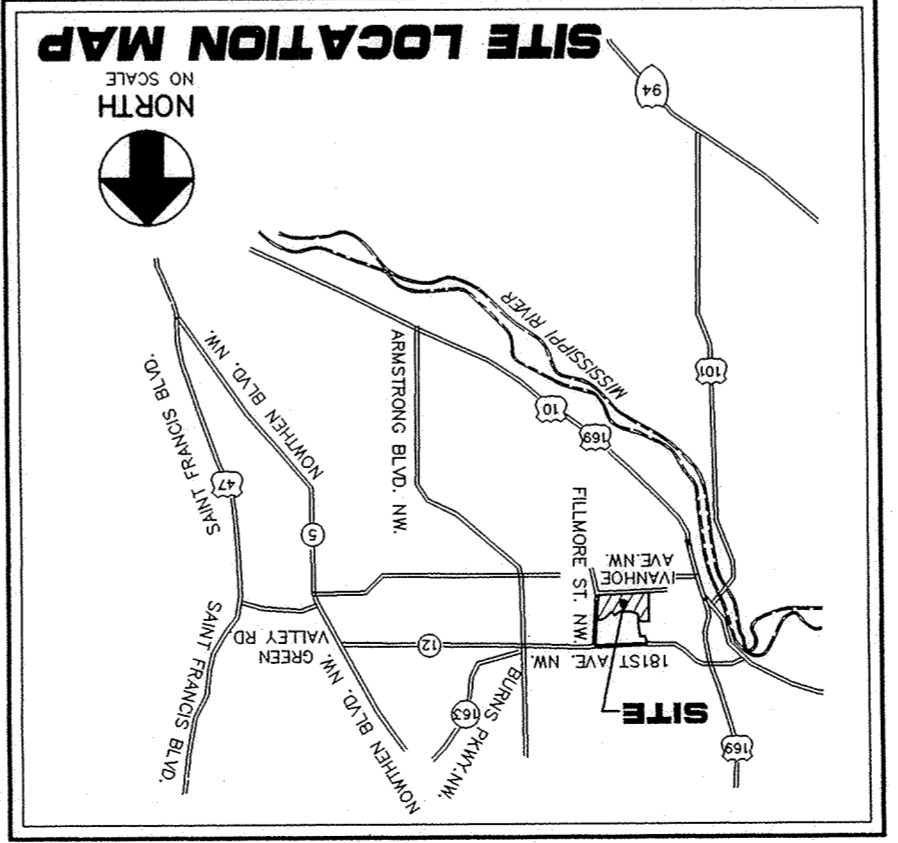
SHEET INDEX
 1. DEVELOPMENT PLAN
 2. DETAILS



Approved
2/1/05



TEMPORARY ROAD
 UNTIL GRAVEL BASE
 CONSTRUCTION IS STARTED
 FOR PERMANENT STREETS
 POND 2
 N.W.L. = 893.6
 100 YR. H.W.L. = 896.7



DEVELOPMENT PLAN

FILLMORE STREET NW

JOHNSON STREET NW

STREET NW
 NOSNHOJ

GRAVEL CONSTRUCTION ENTRANCE