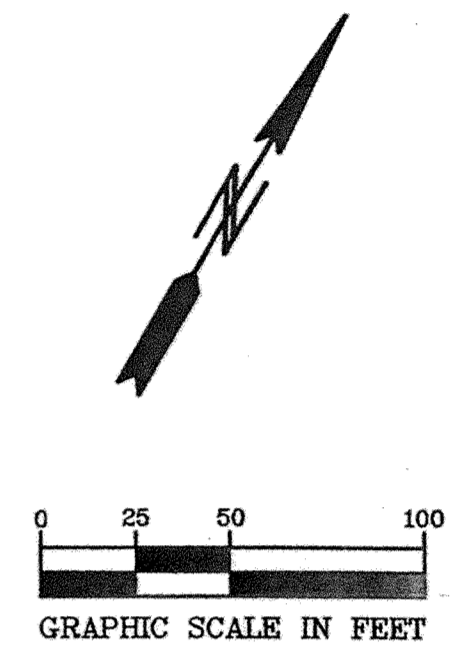
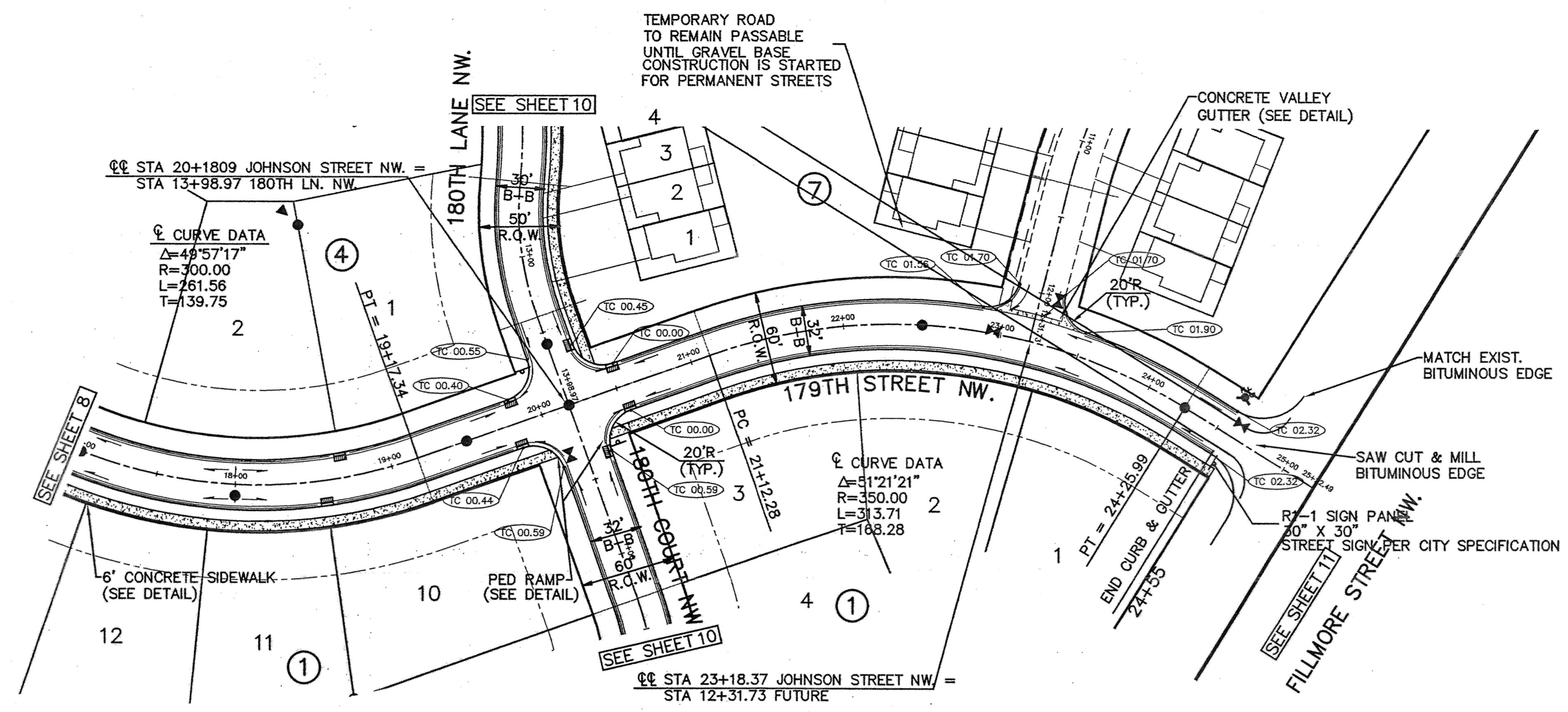


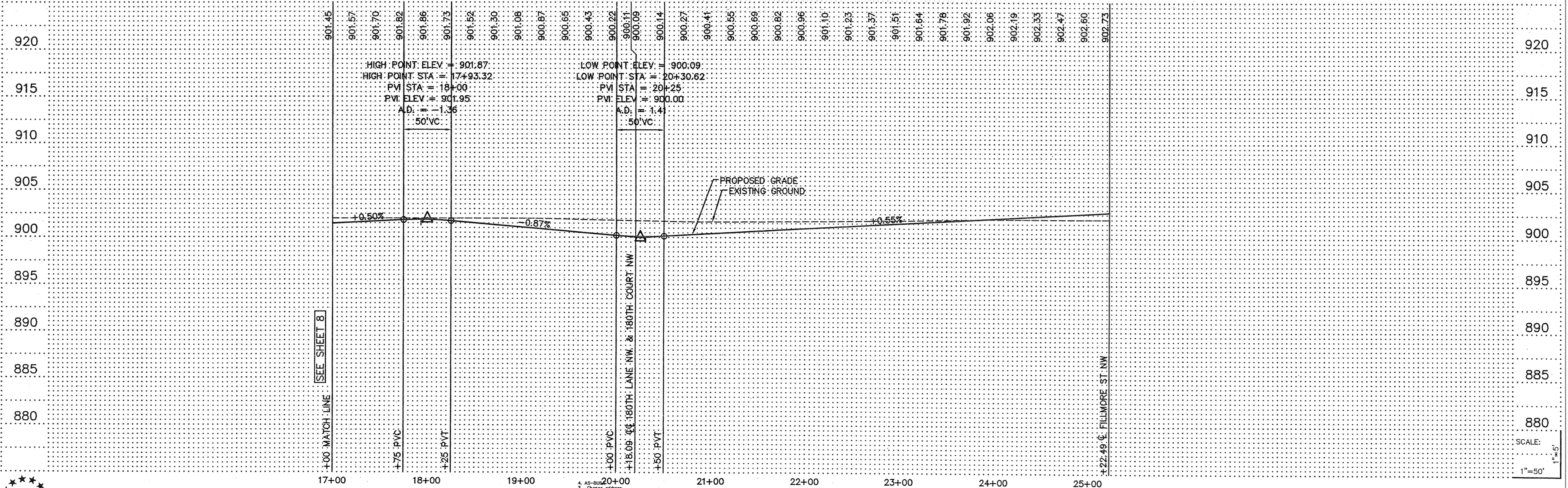
CURB TYPES	
	DENOTES SURMOUNTABLE CONCRETE CURB & GUTTER
	DENOTES B618 CONCRETE CURB & GUTTER
	DENOTES B612 CONCRETE CURB & GUTTER
NOTE: TOP OF CURB ELEV. ARE THE ACTUAL ELEV'S FOR THE TYPE OF CURB SHOWN.	



NOTE:
INSTALL WIMCO OR EQUAL INLET PROTECTION AT CATCH BASINS WITHIN 48 HOURS OF COMPLETING PAVING

BENCHMARKS
DOUBLE SPIKE EAST FACE OF POWER POLE, WEST SIDE OF FILLMORE STREET N.W., 50± FT. SOUTH OF 178TH AVENUE N.W. ELEVATION = 897.82 FT.
TRIPLE SPIKE EAST FACE OF POWER POLE, NW QUADRANT OF FILLMORE STREET AND 175TH AVENUE N.W. ELEVATION = 909.73 FT.

179TH STREET NW.



PIONEER engineering
PA
201 85th Avenue NW
5000 Rogers, MN 55433
(763) 785-1880 FAX: 785-1883
2323 Enterprise Drive
Minnetonka, MN 55312
(952) 835-1880 FAX: 835-1883

I hereby certify that this plan was prepared by me or under my direct supervision and that I am a duly Licensed Professional Engineer under the laws of the State of Minnesota.

Name: *Brian J. Kallio*
Reg. No.: 25817 Date: 7/8/04

Revisions	Date	Designed	Drawn
1. 7/8/04	6/3/04	B.F.K.	LC
2. 7/2/04			
3. 8/3/04			
4. 7/14/05			

SHEET TITLE: STREET CONSTRUCTION
OWNER: GSS PROPERTIES, LLC
8857 ZEALAND AVENUE NORTH
BROOKLYN PARK, MINNESOTA 55445

PROJECT: KLIEVER LAKE FIELDS 2ND ADDITION
ELK RIVER, MINNESOTA

RECORD PLAN 1/14/05
SHEET 9 OF 13 SHEETS

SAICO PRODUCTS • NEW HOPKINS, MINNESOTA
 PREPARED BY PAUL T. MANNING, E.S.S.
 PROJECT NUMBER: 05-01-01-01
 DRAWING NUMBER: 179TH ST NW
 KLIEV04
 9