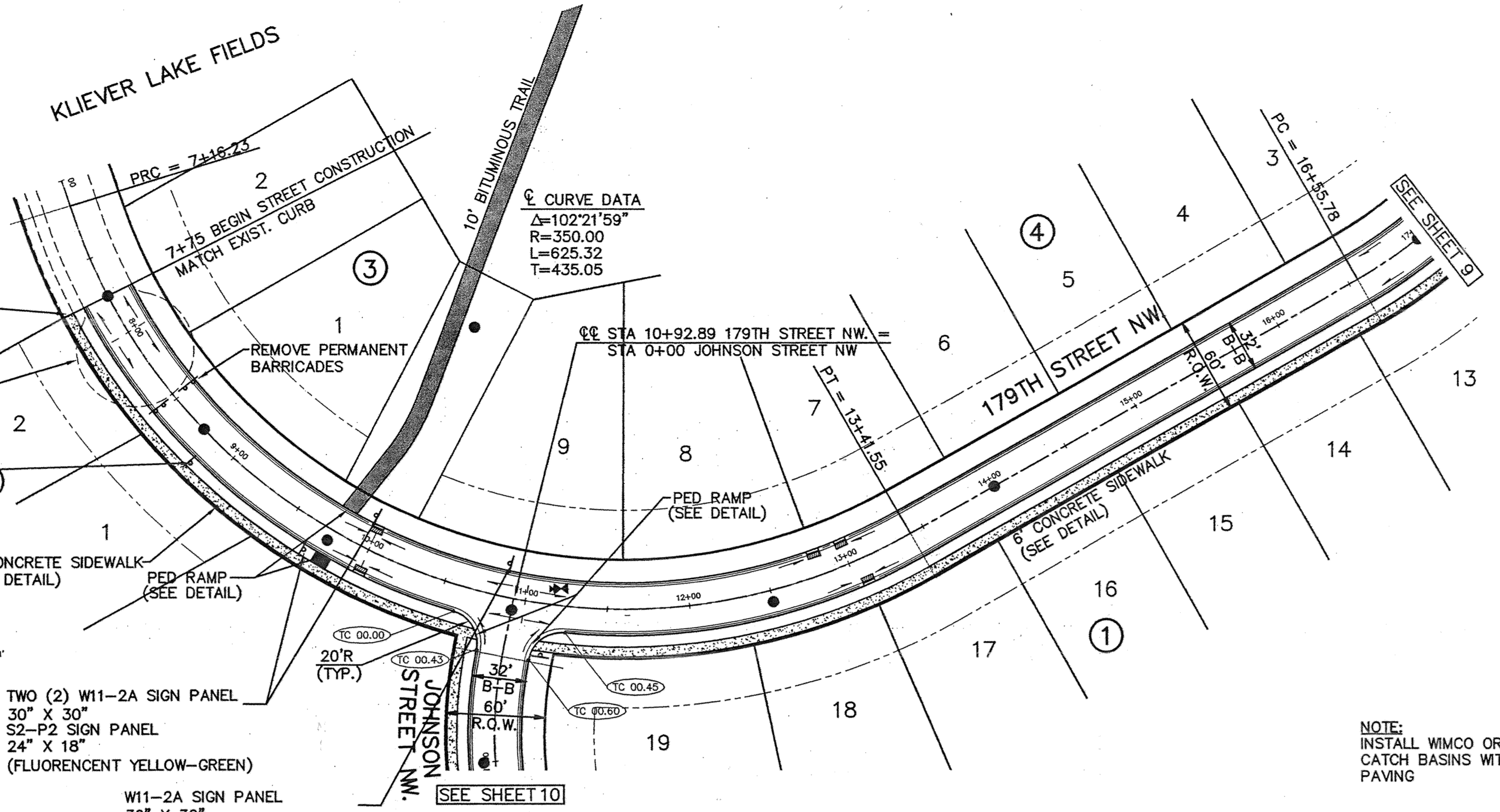


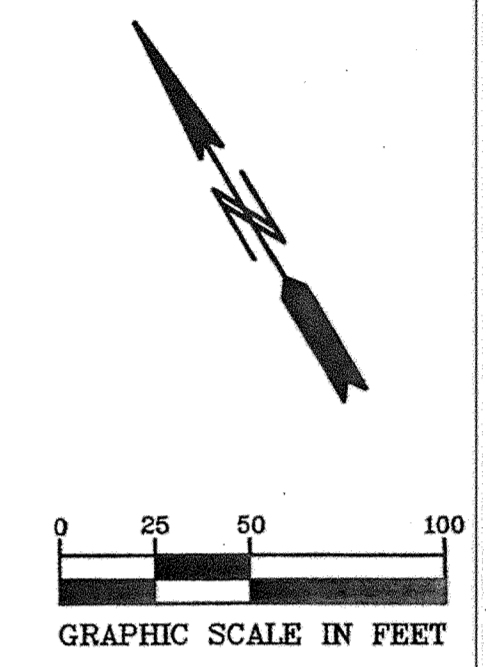
NOTE: B618 CONCRETE CURB AND GUTTER SHALL BE PLACED AROUND RAIN AND AT STORM SEWER STRUCTURES.



**CURB TYPES**

	DENOTES SURMOUNTABLE CONCRETE CURB & GUTTER
	DENOTES B618 CONCRETE CURB & GUTTER
	DENOTES B612 CONCRETE CURB & GUTTER

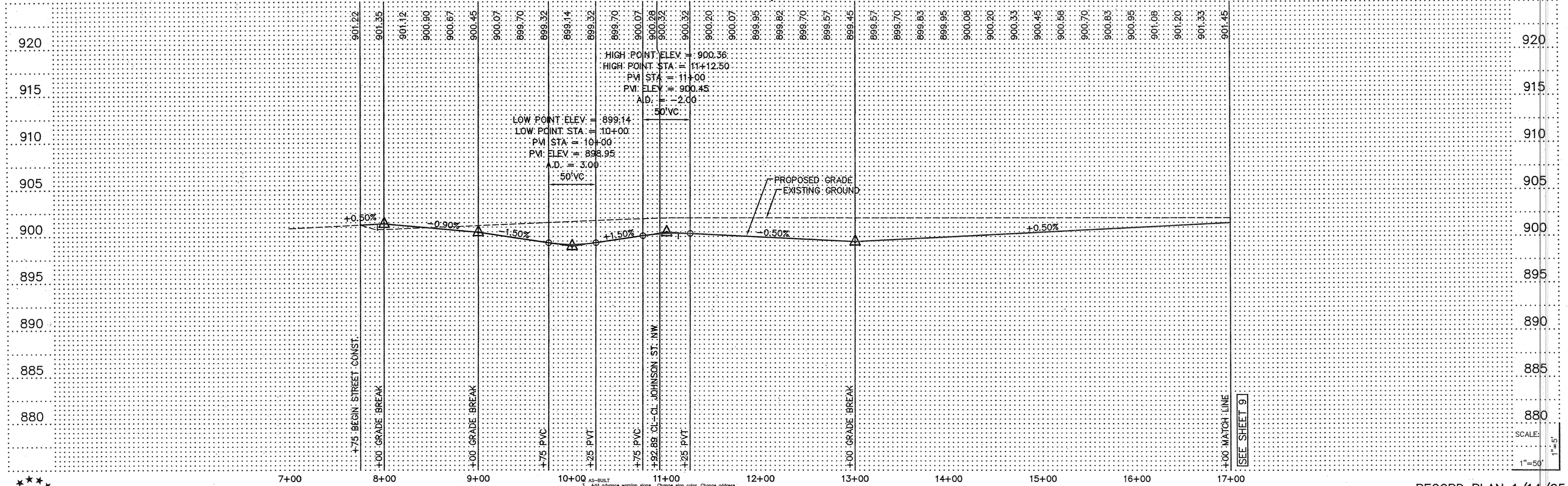
NOTE: TOP OF CURB ELEV. ARE THE ACTUAL ELEV'S FOR THE TYPE OF CURB SHOWN.



NOTE: INSTALL WIMCO OR EQUAL INLET PROTECTION AT CATCH BASINS WITHIN 48 HOURS OF COMPLETING PAVING

DOUBLE SPIKE EAST FACE OF POWER POLE WEST SIDE OF FILLMORE STREET N.W., 50± FT. SOUTH OF 178TH AVENUE N.W. ELEVATION = 897.82 FT.

TRIPLE SPIKE EAST FACE OF POWER POLE, NW QUADRANT OF FILLMORE STREET AND 175TH AVENUE N.W. ELEVATION = 909.73 FT.



**PIONEER engineering**

201 65th Avenue NE, Elk River, MN 55323 (763) 783-1880 FAX: 783-1983

LAND SURVEYORS & CIVIL ENGINEERS

LAND PLANNERS - LANDSCAPE ARCHITECTS

I hereby certify that this plan was prepared by me or under my direct supervision and that I am a duly Licensed Professional Engineer under the laws of the State of Minnesota.

Name: *Brian P. Kollis*

Reg. No.: 25817 Date: 7/8/04

Revisions:

1. 7/8/04

2. 7/23/04

3. 8/2/04

4. 1/14/05

Date: 6/3/04

Designed: B.F.K.

Drawn: LC

SHEET TITLE: **STREET CONSTRUCTION**

OWNER: **GSS PROPERTIES, LLC**  
8857 ZEALAND AVENUE NORTH  
BROOKLYN PARK, MINNESOTA 55445

PROJECT: **KLIEVER LAKE FIELDS 2ND ADDITION**  
ELK RIVER, MINNESOTA

RECORD PLAN 1/14/05

SHEET 8 OF 13 SHEETS

Project #