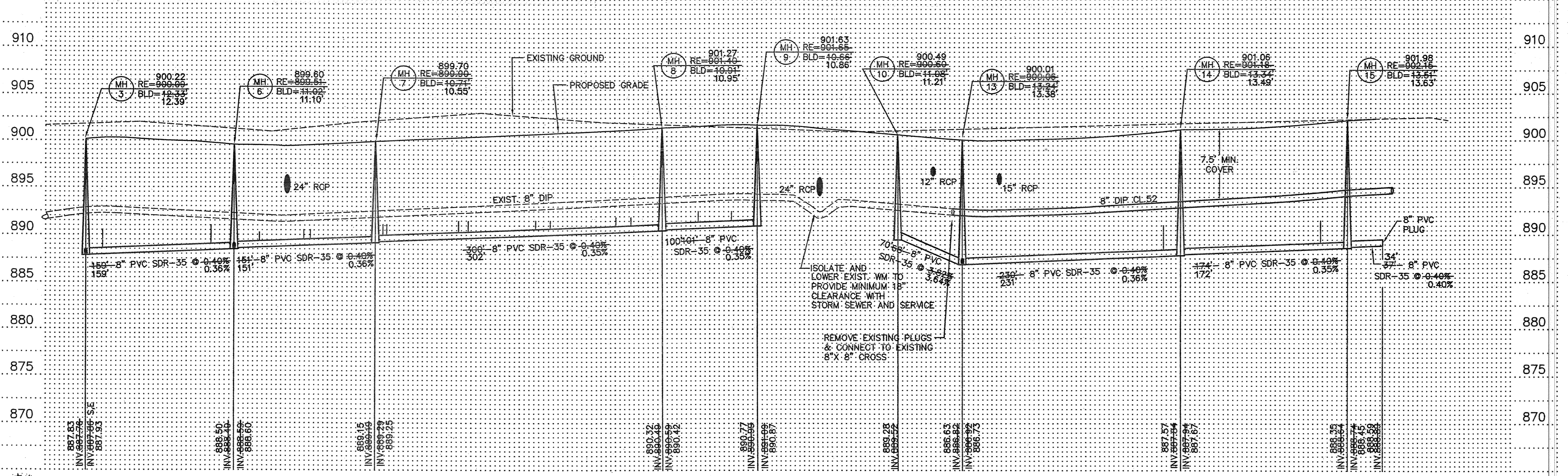


BENCHMARKS

DOUBLE SPIKE EAST FACE OF POWER POLE, WEST SIDE OF FILLMORE STREET N.W., 50± FT. SOUTH OF 178TH AVENUE N.W. ELEVATION = 897.82 FT.

TRIPLE SPIKE EAST FACE OF POWER POLE, NW QUADRANT OF FILLMORE STREET AND 175TH AVENUE N.W. ELEVATION = 909.73 FT.



PIONEER engineering 201 69th Avenue NW 5500 78th Street, MN 55433 (763) 786-1880 FAX: 783-1883 2424 Excelsior Blvd Mendota Heights, MN 55120 (612) 885-1554 FAX: 612-885-8488	I hereby certify that this plan was prepared by me or under my direct supervision and that I am a duly Licensed Professional Engineer under the laws of the State of Minnesota. Name: <i>Brian F. Kollis</i> Reg. No. 25817 Date 7/8/04	Revisions 1. 7/7/04 2. 6/3/04 3. 1/14/05	Date: 6/3/04 Designed: B.F.K. Drawn: LC	SHEET TITLE SANITARY SEWER & WATERMAIN	OWNER GSS PROPERTIES, LLC 8857 ZEALAND AVENUE NORTH BROOKLYN PARK, MINNESOTA 55445	PROJECT KLIEVER LAKE FIELDS 2ND ADDITION ELK RIVER, MINNESOTA	SHEET 3 OF 13 SHEETS	RECORD PLAN 1/14/05
								3. AS-BUILT 2. Change address 1. Per city comments