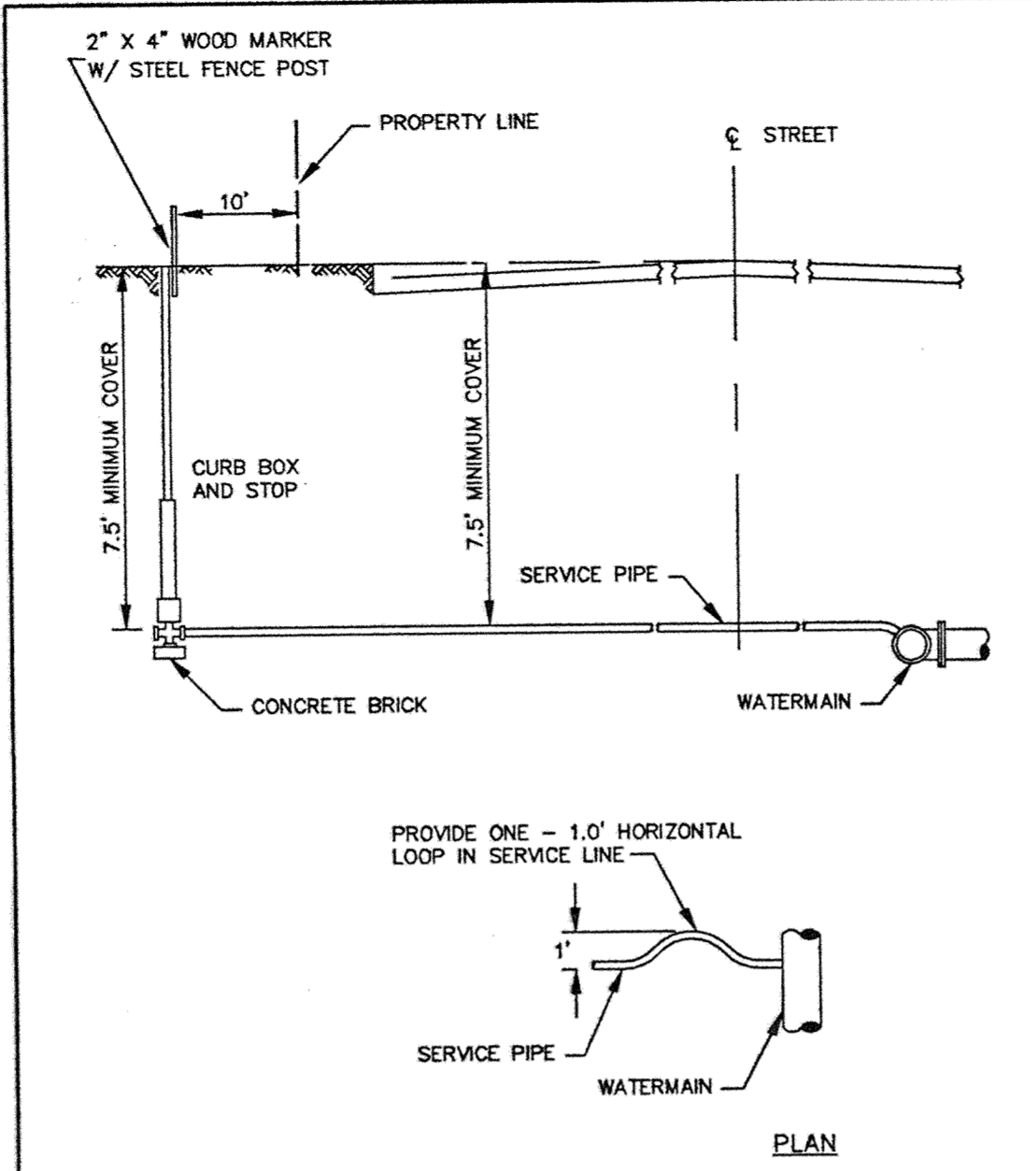
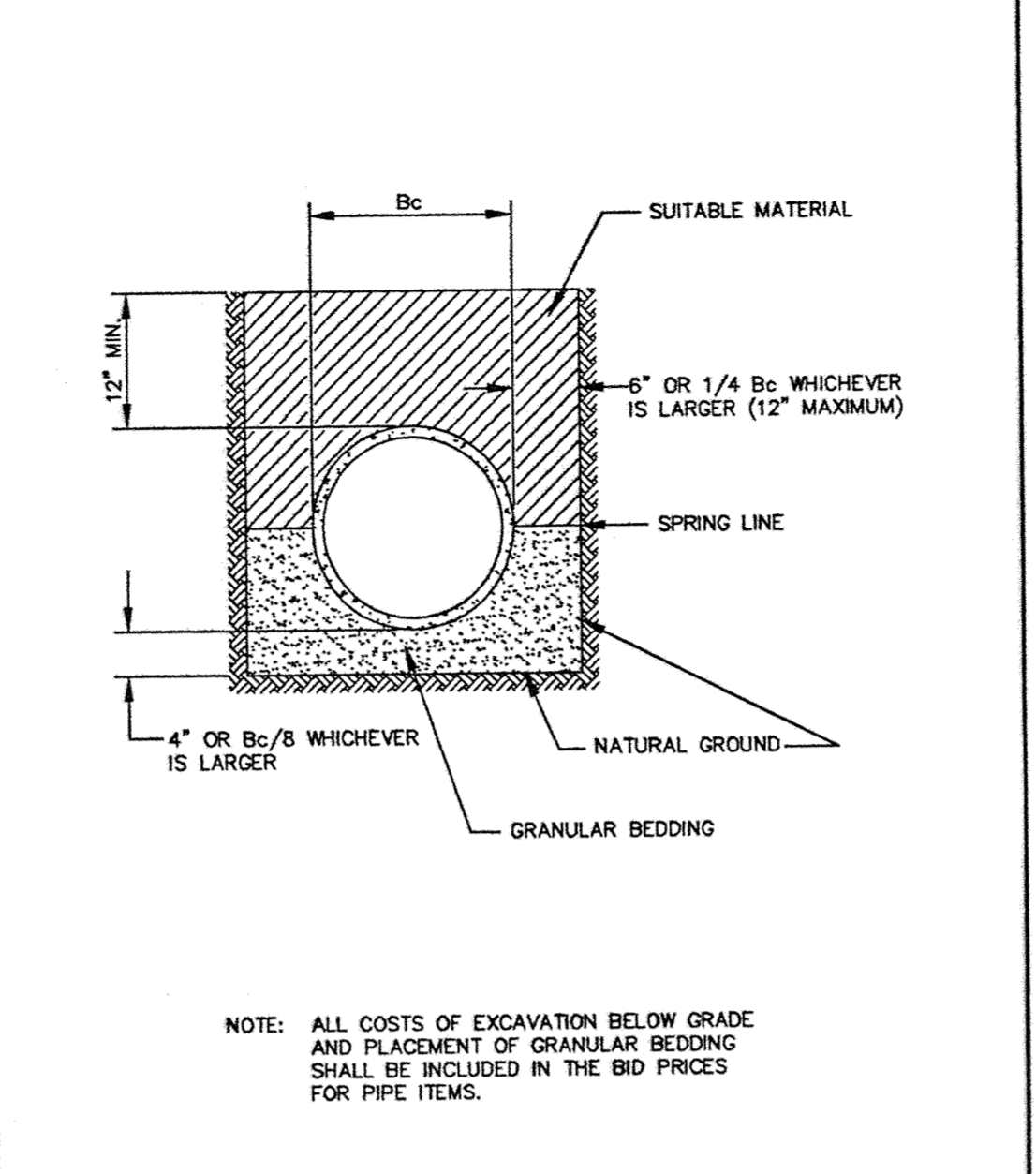


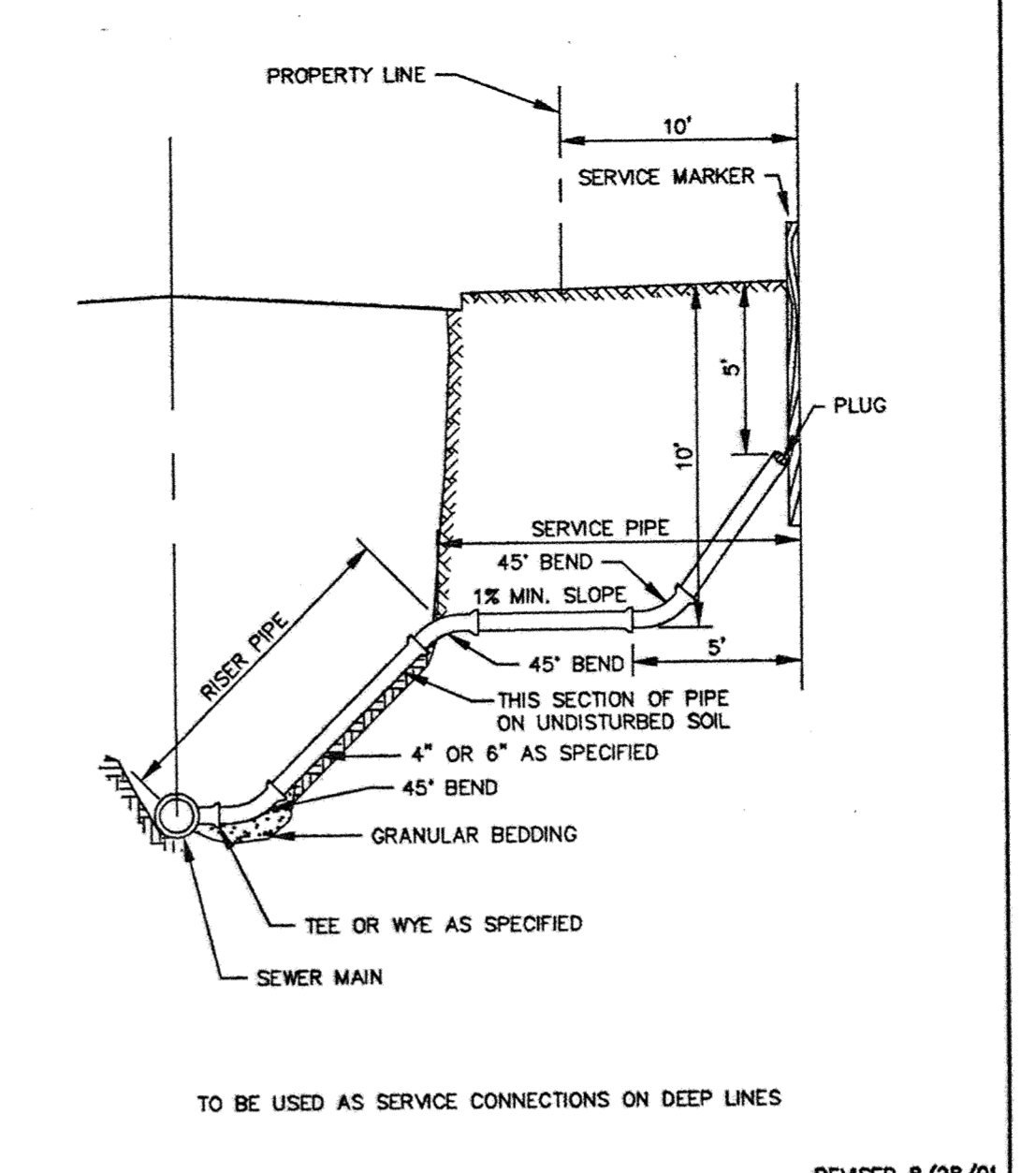
ERSTD-WM
RODDING DETAIL
 City of Elk River
 STANDARD PLATE NO. 3402



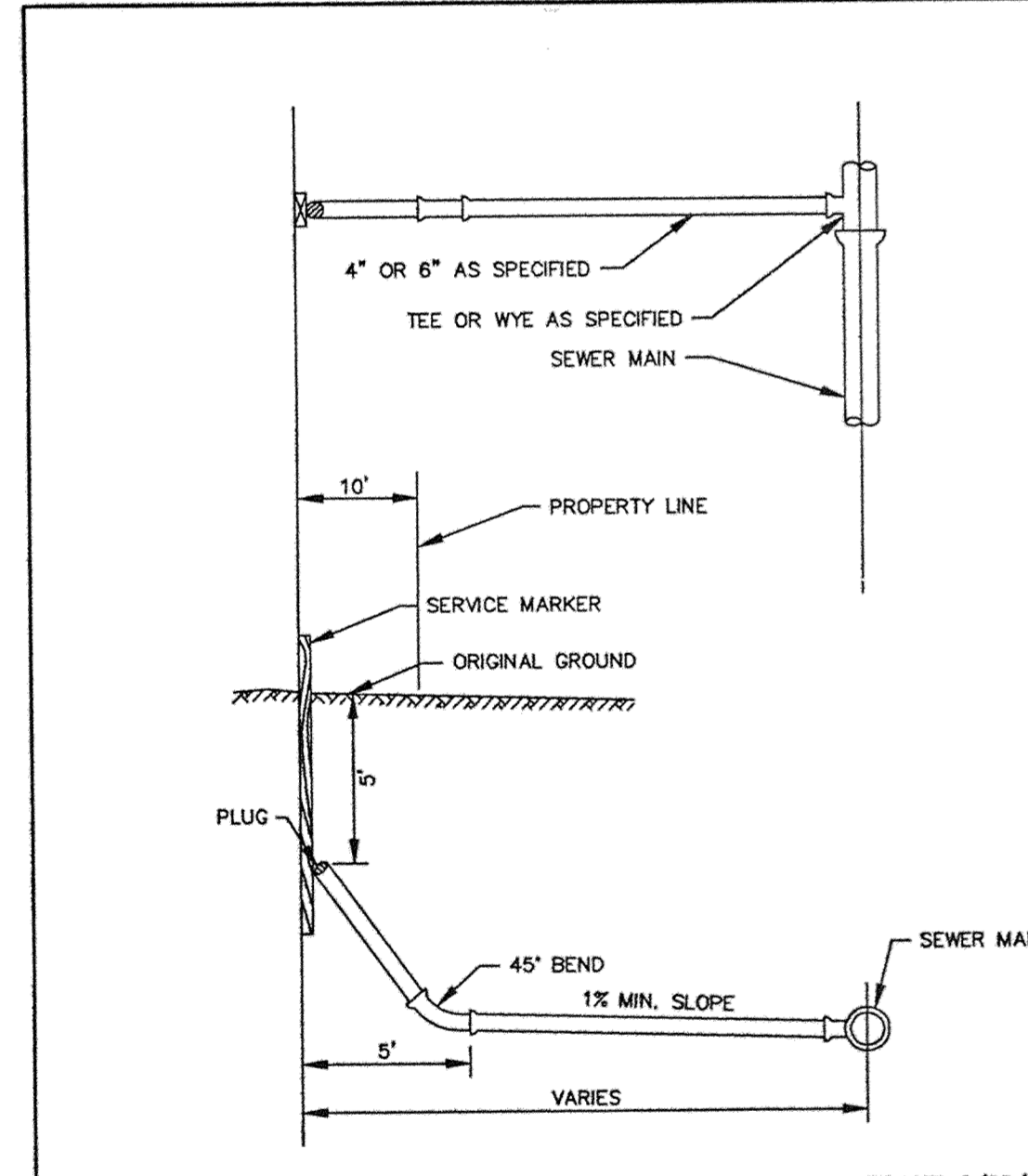
ERSTD-WM
TYPICAL SERVICE DETAIL
 City of Elk River
 STANDARD PLATE NO. 3403



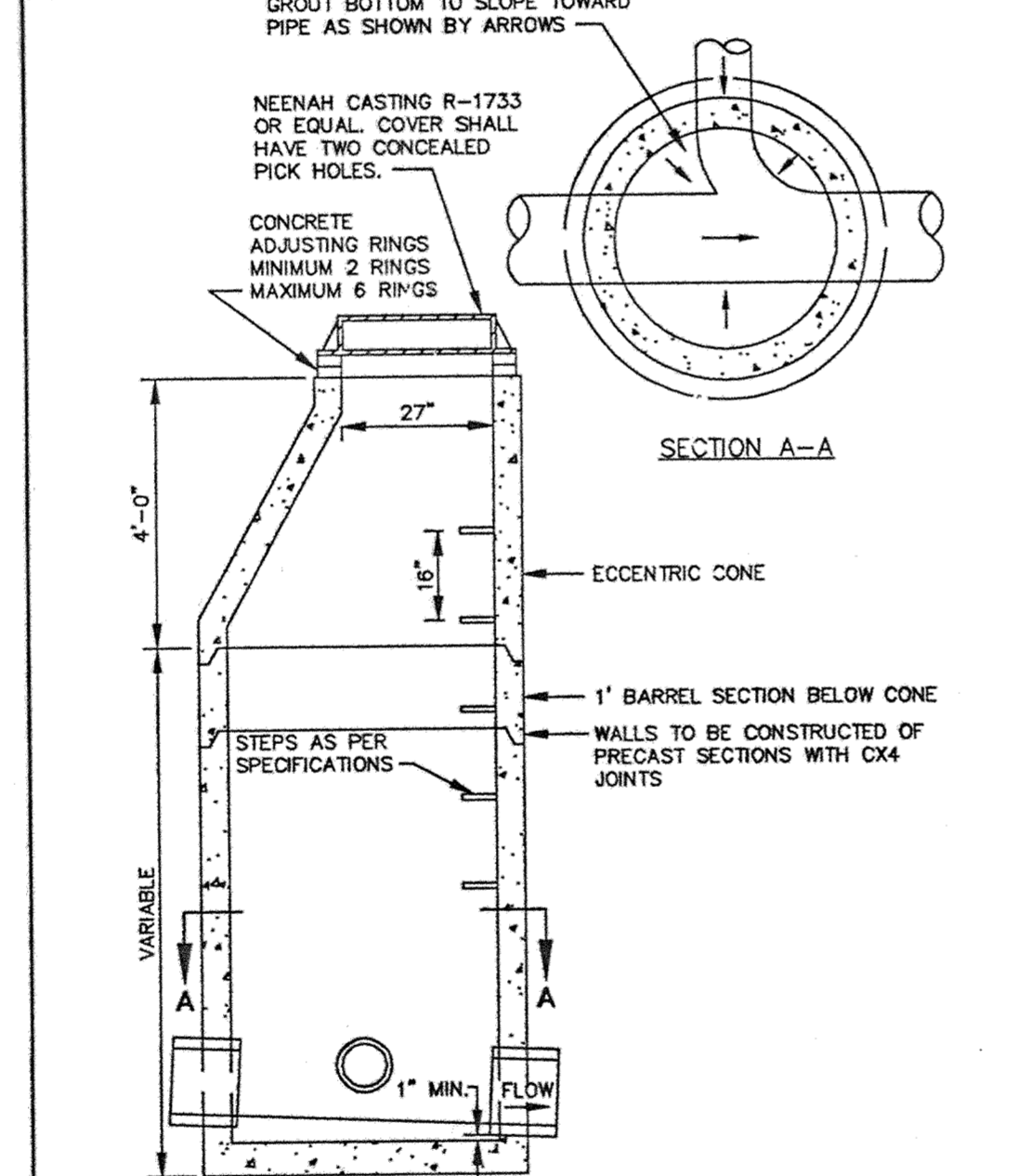
ERSTD-SA
CLASS B PIPE BEDDING
 City of Elk River
 STANDARD PLATE NO. 4006



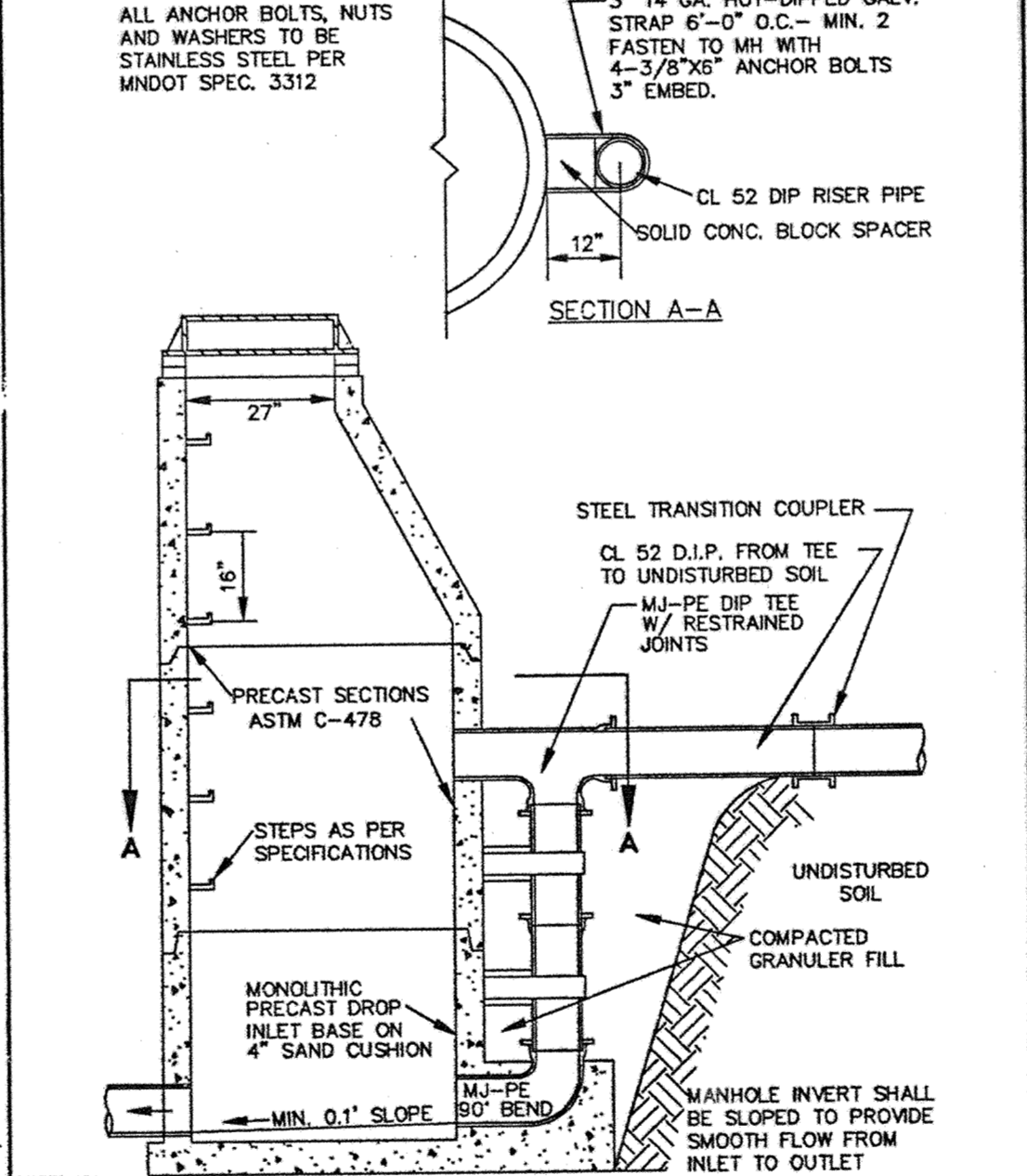
ERSTD-SA
SERVICE RISER SECTION
 City of Elk River
 STANDARD PLATE NO. 4008



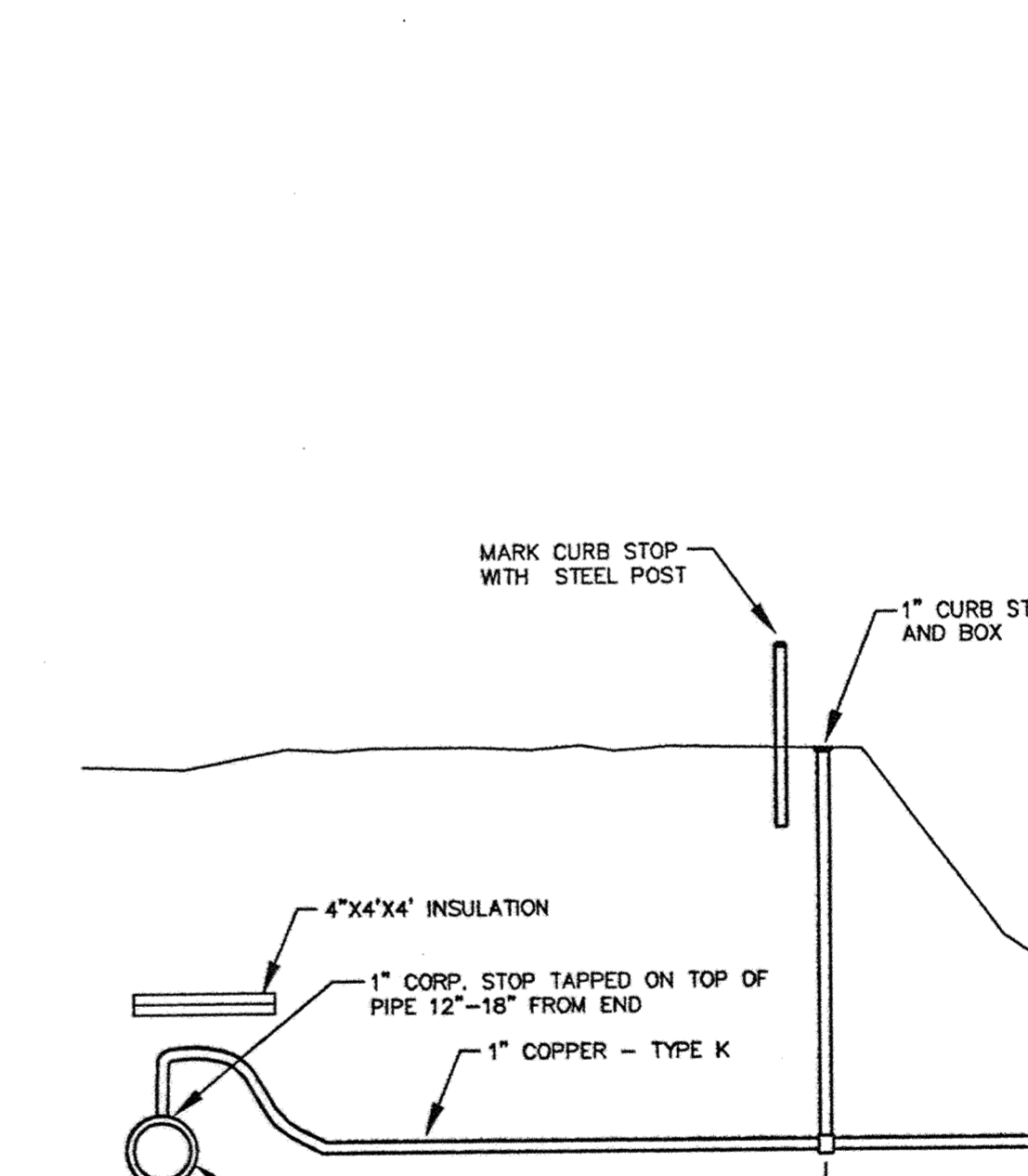
ERSTD-SA
TYPICAL HOUSE SERVICE
 City of Elk River
 STANDARD PLATE NO. 4007



ERSTD-SA
STANDARD MANHOLE
 City of Elk River
 STANDARD PLATE NO. 4000



ERSTD-SA
OUTSIDE DROP MANHOLE
 City of Elk River
 STANDARD PLATE NO. 4004



ERSTD-SA
BLEEDER VALVE DETAIL

2. ADD OUTSIDE DROP MH DETAIL.
 1. ADD BLEEDER VALVE DETAIL.

I hereby certify that this plan was prepared by me or under my direct supervision and that I am a duly Licensed Professional Engineer under the laws of the State of Minnesota.

Name: Paul J. Cherno
 Reg. No. 19880 Date: 8/31/01

Revisions:
 1. 10/10/01
 2. 10/29/01

Date: 8/31/01
 Designed: PJC
 Drawn: SAG

SHEET TITLE
DETAILS

OWNER: **GOLD NUGGET**
 8857 ZEALAND AVENUE NORTH
 BROOKLYN PARK, MINNESOTA 55445

PROJECT: **KLIEVER LAKE FIELDS
 PHASE 1**

SHEET 20 OF 20 SHEETS