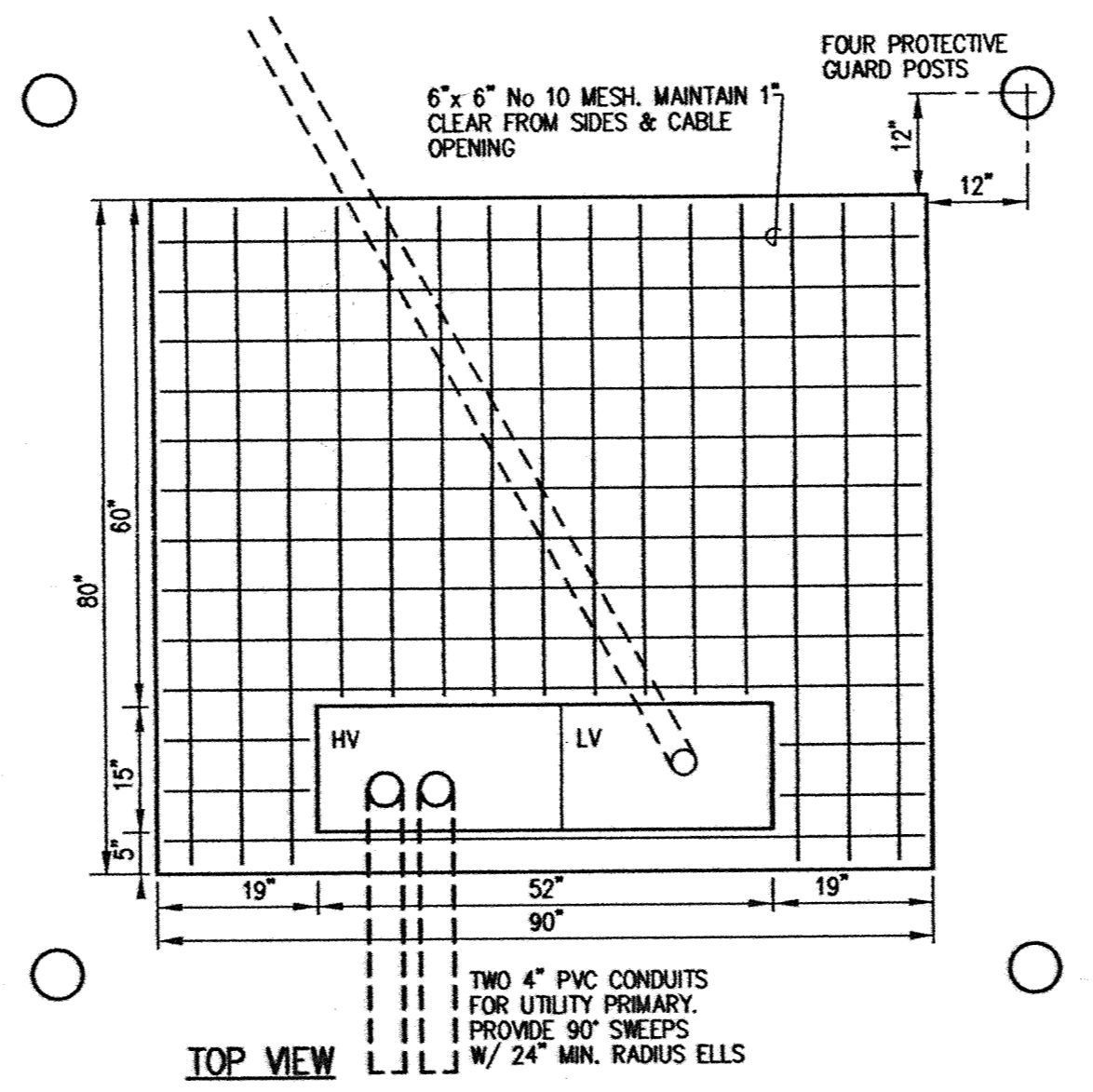
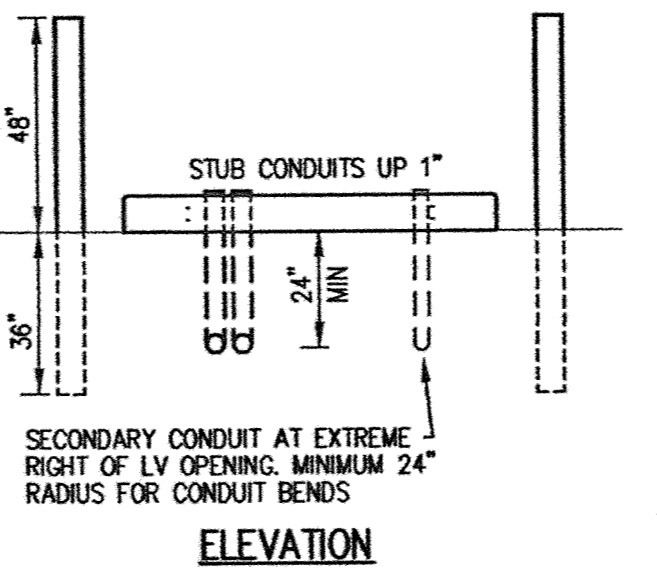


SECTION VIEW - SOME ITEMS ROTATED FOR CLARITY



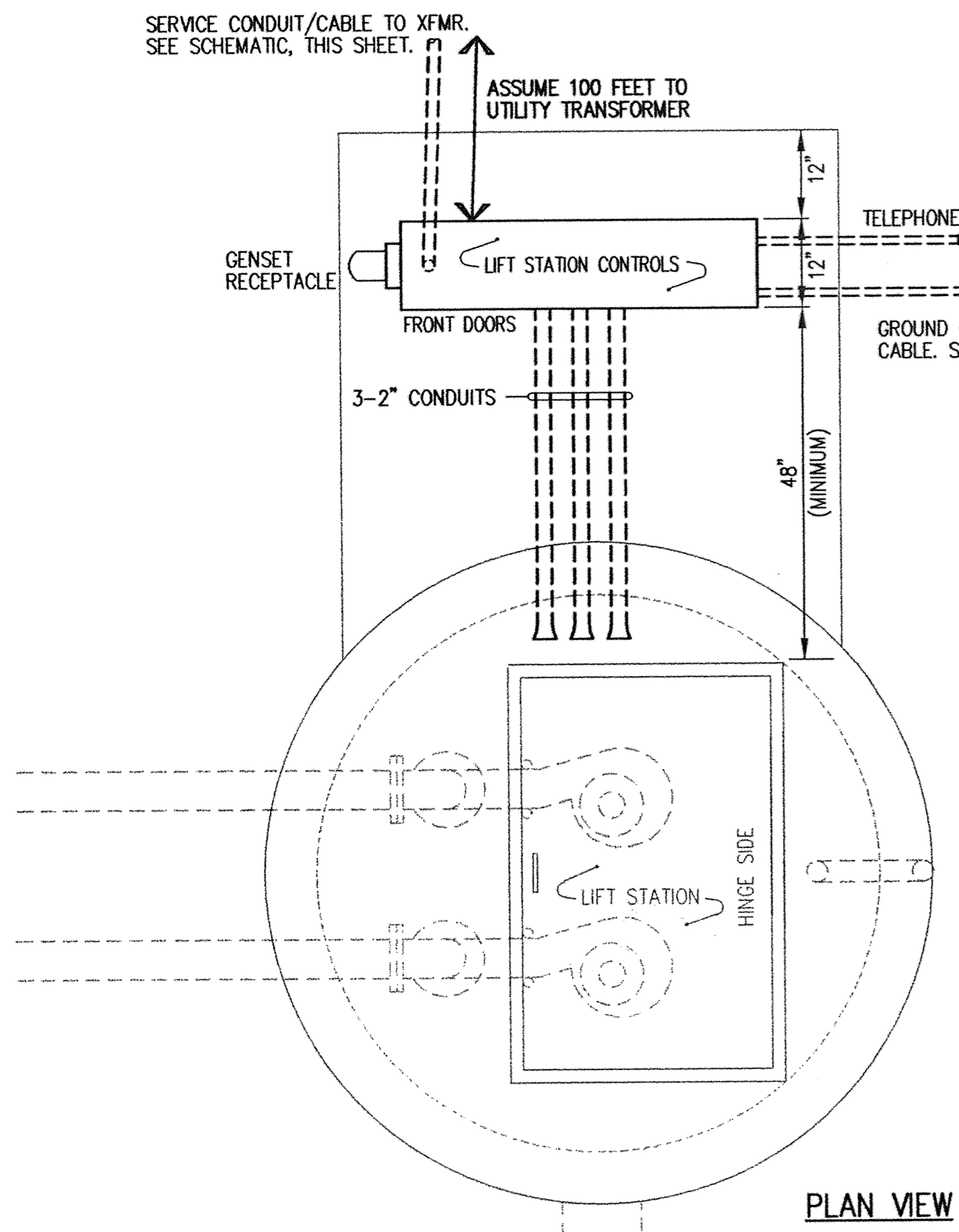
TOP VIEW



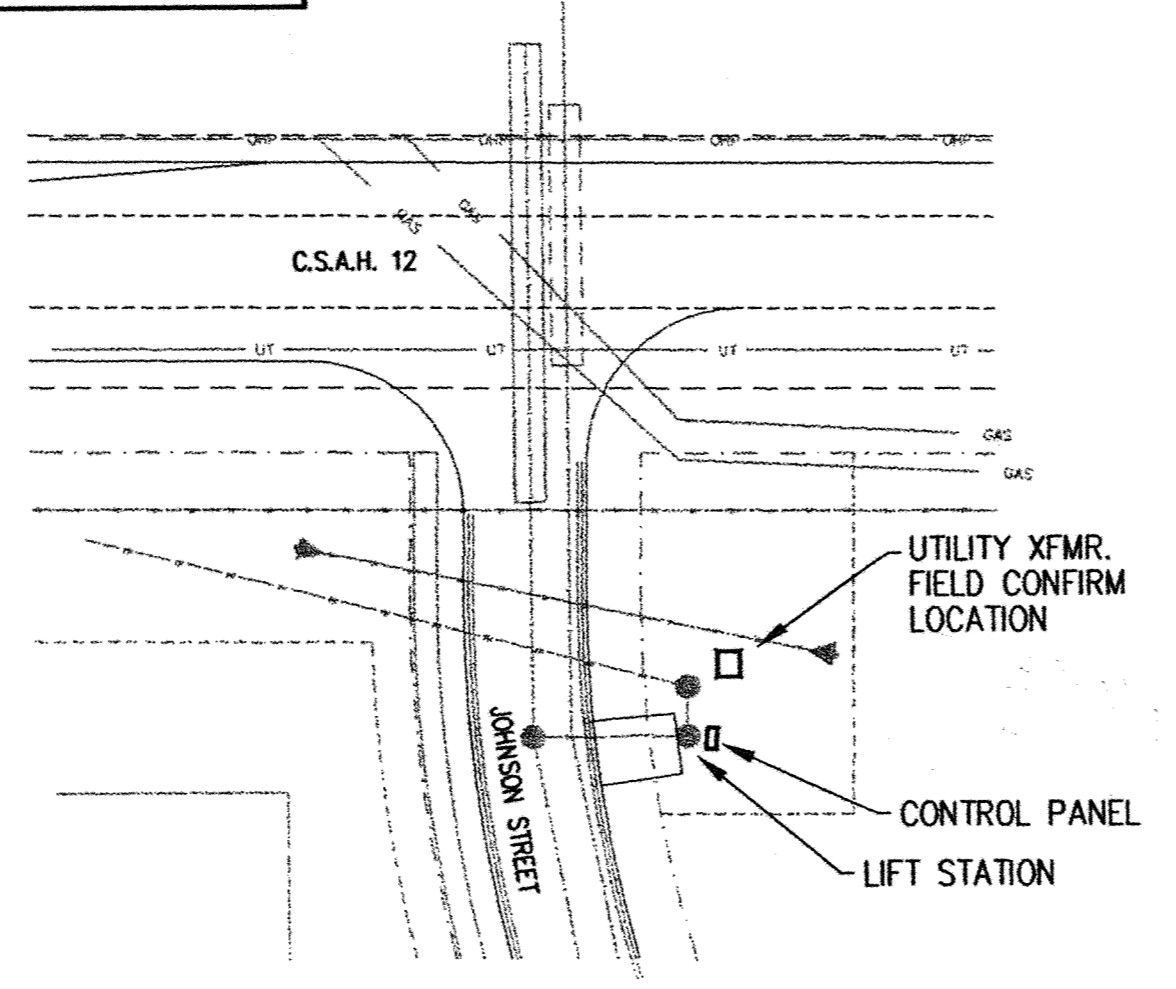
ELEVATION

TRANSFORMER PAD DETAILS
NO SCALE

- TRANSFORMER PAD NOTES**
1. TROWEL FINISH TOP OF PAD. ROUND CORNERS & EDGES
 2. CONFIRM ORIENTATION, CLEARANCES, DIMENSIONS & CONSTRUCTION W/ ELK RIVER UTILITIES PRIOR TO CONSTRUCTION
 3. CONCRETE PAD TO BE FRAMED WITH 2x8" CONCRETE THICKNESS MUST BE UNIFORM & FULL DEPTH OF 2x8" CONCRETE SHALL HAVE MINIMUM DESIGN STRENGTH OF 4000psi
 4. PROTECTIVE GUARD POSTS SHALL BE 6" STEEL CASING FILLED W/ CONCRETE & SET 3" IN THE GROUND
 5. GUARD POSTS SHALL BE PRIME PAINTED AND FINISH PAINTED WITH TWO COATS ENAMEL. COLOR AS DIRECTED.

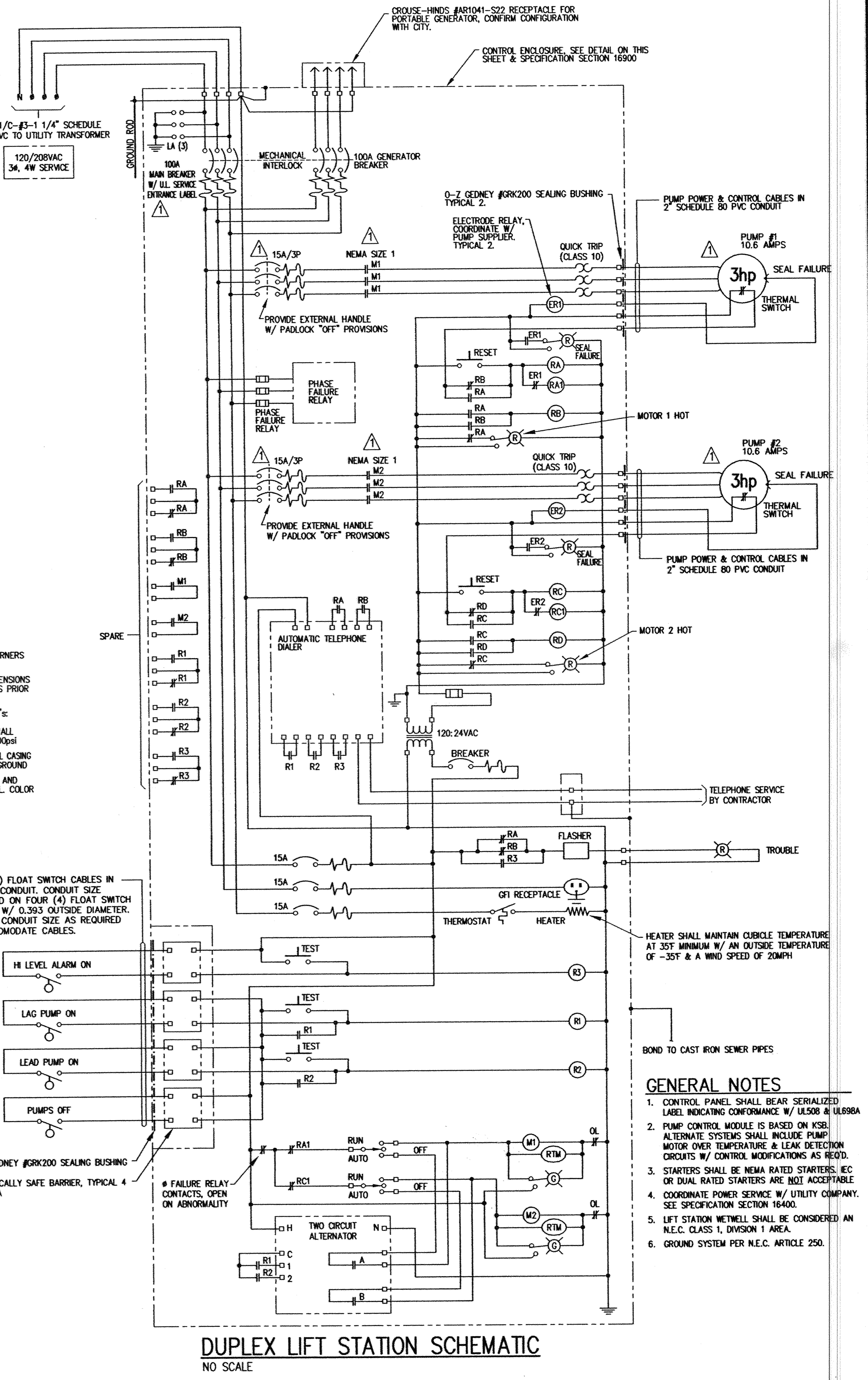


LIFT STATION DETAILS
NO SCALE



TRANSFORMER FURNISHED & INSTALLED BY ELK RIVER UTILITIES. TRANSFORMER PAD FURNISHED & INSTALLED BY CONTRACTOR PER UTILITY REQUIREMENTS.

ELECTRICAL SITE PLAN
SCALE: 1"=APPROX 50'



DUPLIX LIFT STATION SCHEMATIC
NO SCALE

- GENERAL NOTES**
1. CONTROL PANEL SHALL BEAR SERIALIZED LABEL INDICATING CONFORMANCE W/ UL508 & UL698A
 2. PUMP CONTROL MODULE IS BASED ON KSB. ALTERNATE SYSTEMS SHALL INCLUDE PUMP MOTOR OVER TEMPERATURE & LEAK DETECTION CIRCUITS W/ CONTROL MODIFICATIONS AS REQ'D.
 3. STARTERS SHALL BE NEMA RATED STARTERS IEC OR DUAL RATED STARTERS ARE NOT ACCEPTABLE. SEE SPECIFICATION SECTION 16400.
 4. COORDINATE POWER SERVICE W/ UTILITY COMPANY.
 5. LIFT STATION WETWELL SHALL BE CONSIDERED AN N.E.C. CLASS 1, DIVISION 1 AREA.
 6. GROUND SYSTEM PER N.E.C. ARTICLE 250.

PIONEER engineering
PA
2422 Enterprise Drive
Minnetonka, MN 55312
(952) 885-1814 FAX: 885-9488
625 Highway 52 NE
Blaine, MN 55425
(763) 763-1800 FAX: 763-1803

I hereby certify that this plan was prepared by me or under my direct supervision and that I am a duly Licensed Professional Engineer under the laws of the State of Minnesota.

Name: Paul Koeding
Reg. No.: 9955 Date: 12 NOV 01

Revisions: 1/17/02 HP Change
Date: 12 NOV 01
Designed: PFK
Drawn: CPM/JGB

SHEET TITLE: LIFT STATION SCHEMATIC & DETAILS

OWNER: GOLD NUGGET
8857 ZEALAND AVENUE NORTH
BROOKLYN PARK, MINNESOTA 55445

PROJECT: KLIEVER LAKE FIELDS
PHASE 1

SHEET 17 OF 20 SHEETS

SAFCO PRODUCTS • NEW HARB, MINNESOTA
 REVISIONS BY SHEET NUMBER 0002
 PREPARED BY SAFCO PRODUCTS
 SAFCO PRODUCTS • NEW HARB, MINNESOTA
 REVISIONS BY SHEET NUMBER 0002
 PREPARED BY SAFCO PRODUCTS
 SAFCO PRODUCTS • NEW HARB, MINNESOTA
 REVISIONS BY SHEET NUMBER 0002
 PREPARED BY SAFCO PRODUCTS
 KLIEVER 102
 17