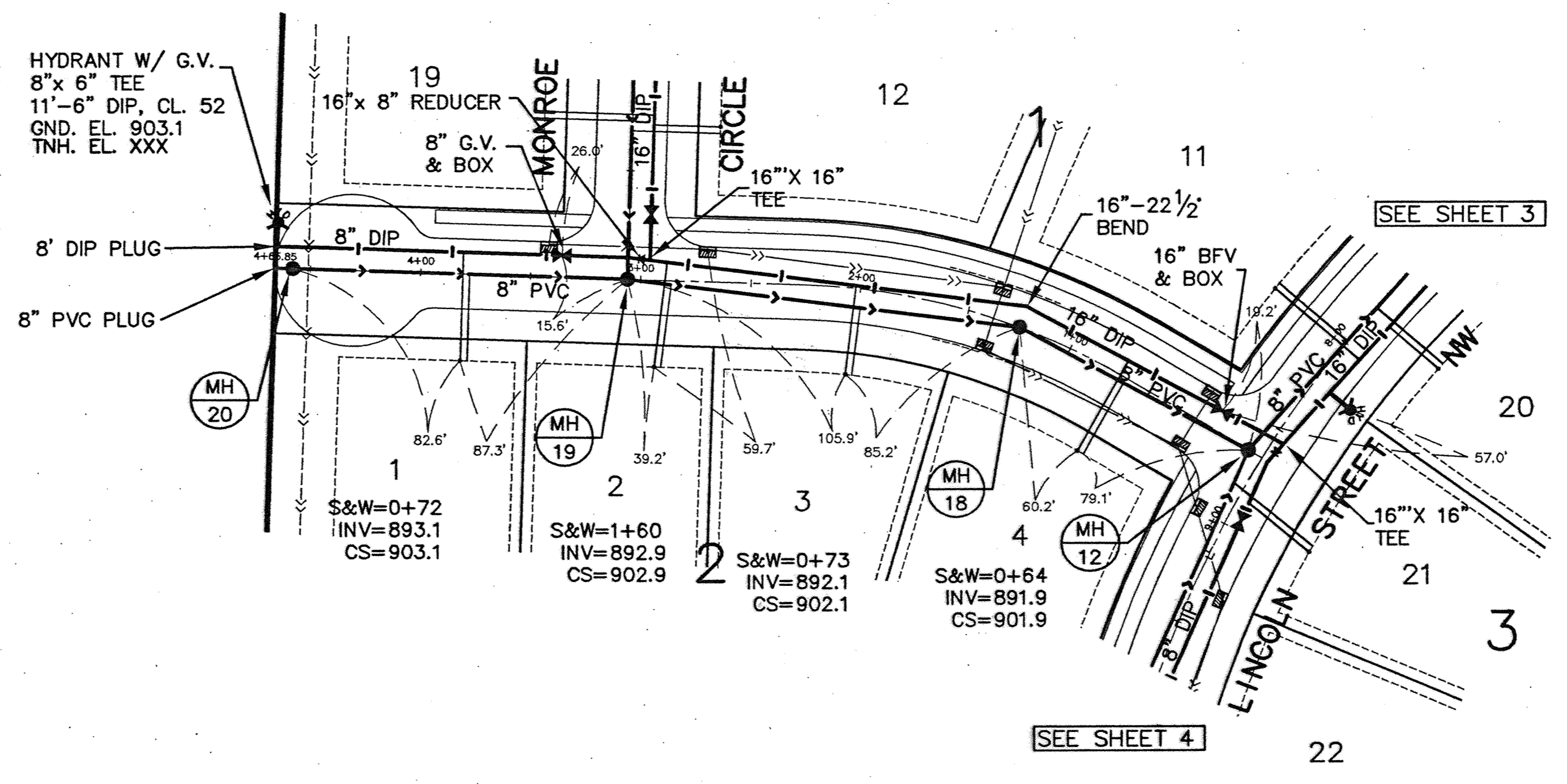
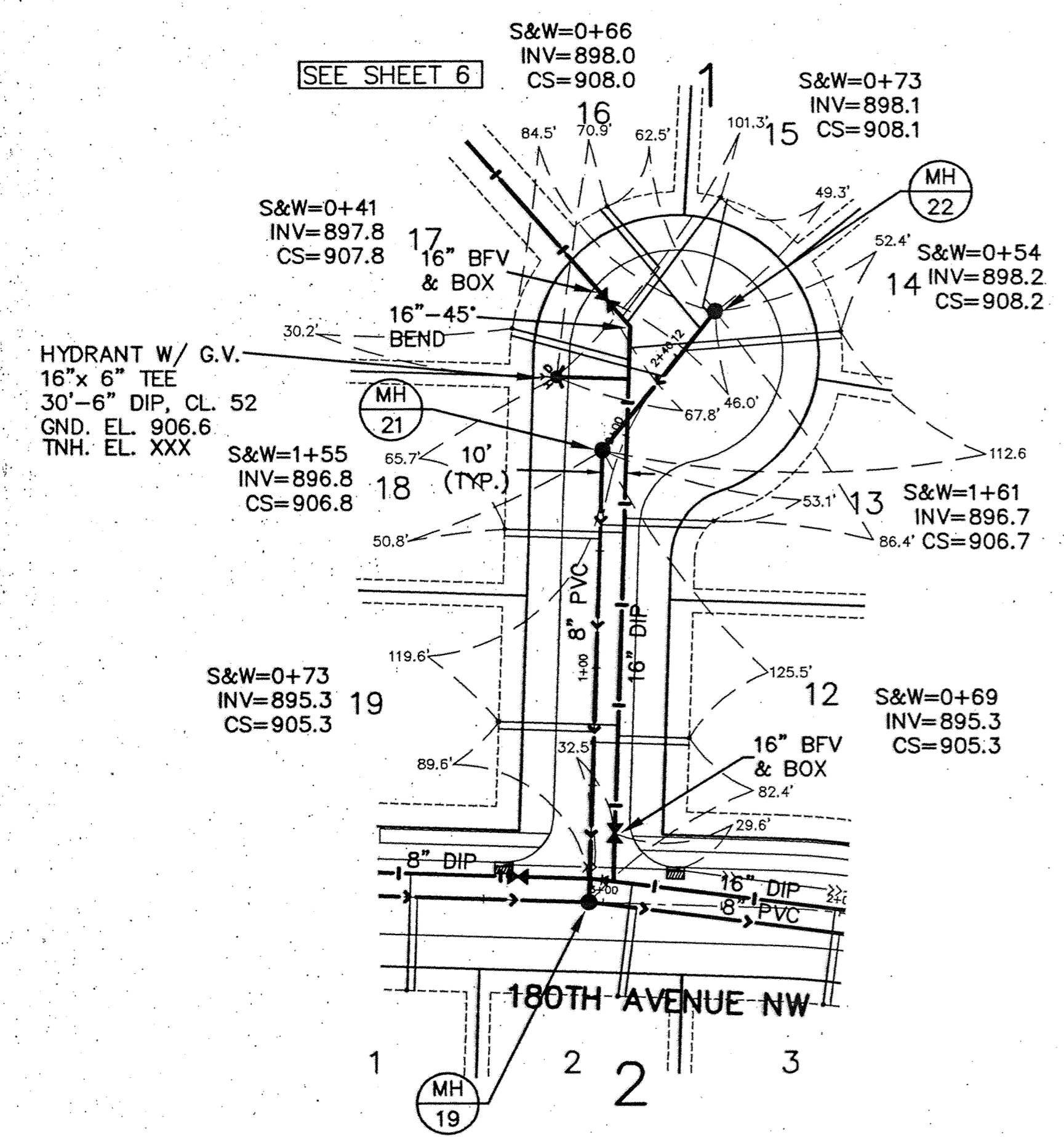


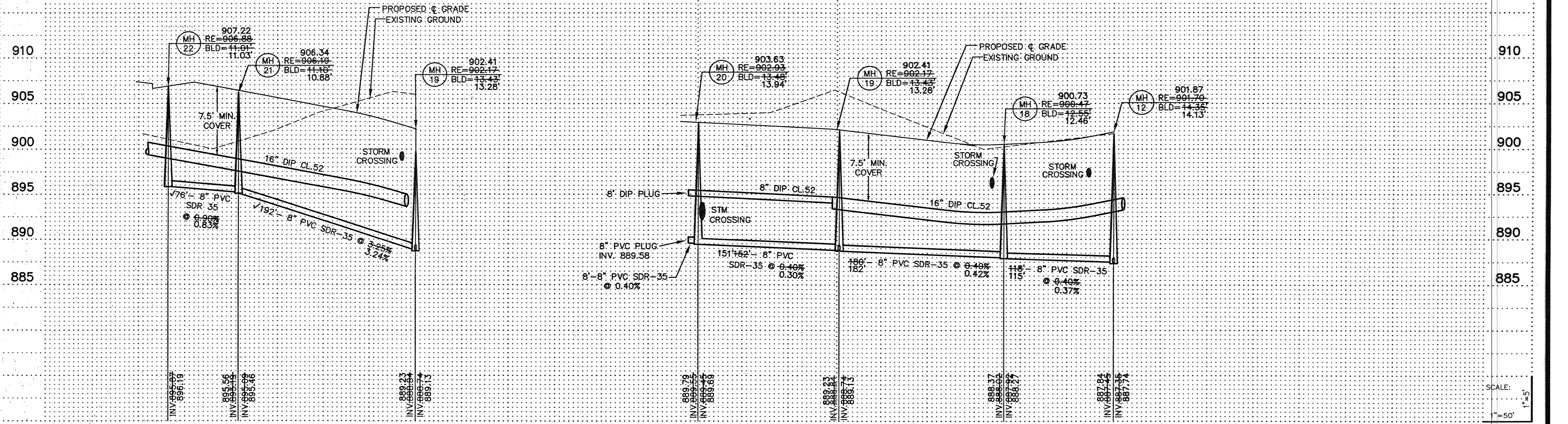
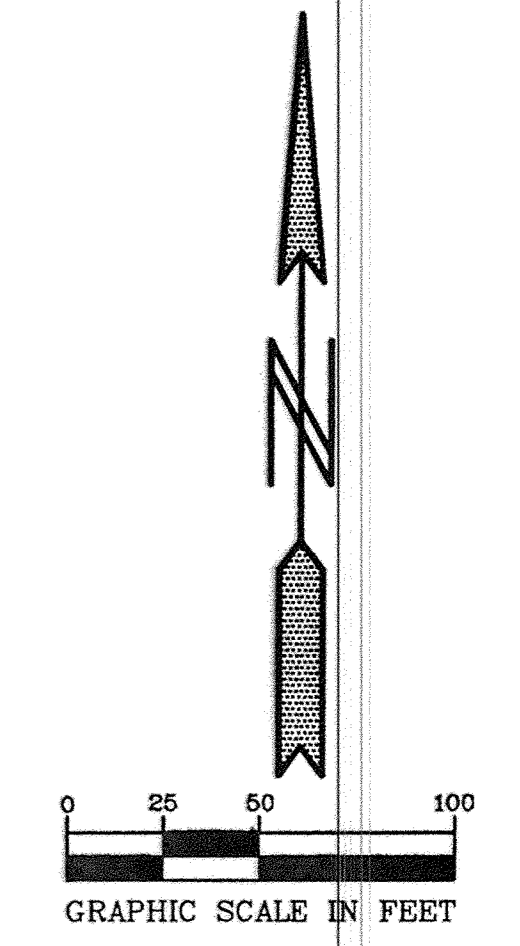
GENERAL NOTES:

- 1.) SANITARY SEWER SERVICES SHALL BE 4" PVC SDR-35.
- 2.) SANITARY SEWER SERVICE WYES ARE STATIONED FROM DOWN STREAM MANHOLE.
- 3.) WATER SERVICES SHALL BE 1" COPPER TYPE "K" W/ 7.5' MINIMUM COVER.
- 4.) SANITARY SEWER INVERTS ARE SHOWN AT THE BEND JUST BEFORE THE RISER PIPE.
- 5.) SANITARY SEWER & WATER SERVICES SHALL BE CONSTRUCTED 10' BEYOND RIGHT-OF-WAY.



MONROE CIRCLE

180TH AVENUE NW



**PIONEER engineering**  
 LAND SURVEYORS - CIVIL ENGINEERS  
 LAND PLANNERS - LANDSCAPE ARCHITECTS  
 2422 Enterprise Drive  
 Moorhead, Minnesota, MN 56520  
 (218) 835-1884 FAX (218) 835-1885  
 825 Highway 10 N.E.  
 Brainerd, MN 56604  
 (763) 783-1880 FAX 783-1883

I hereby certify that this plan was prepared by me or under my direct supervision and that I am a duly Licensed Professional Engineer under the laws of the State of Minnesota.

Name: *Paul J. Chene*  
 Reg. No.: 19860 Date: 8/31/01

2. AS-BUILT  
 1. PER CITY REVIEW.  
 Revisions:  
 1. 10/1/01  
 2. 03/11/03

Date: 8/31/01  
 Designed: PJC  
 Drawn: SAG

SHEET TITLE: **SANITARY SEWER & WATERMAIN**

OWNER: **GOLD NUGGET**  
 8857 ZEALAND AVENUE NORTH  
 BROOKLYN PARK, MINNESOTA 55445

PROJECT: **KLIEVER LAKE FIELDS PHASE 1**

SHEET 5 OF 20 SHEETS

RECORD PLAN 03/11/03

SCALE: 1"=50'