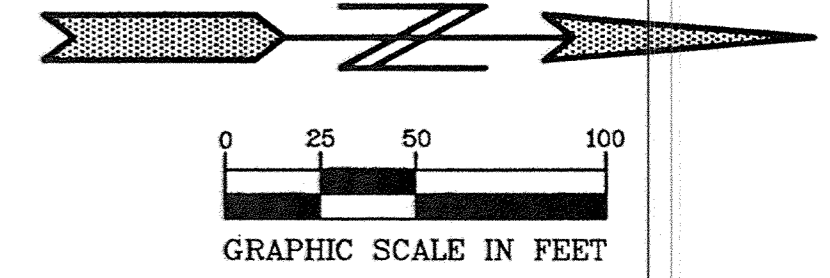
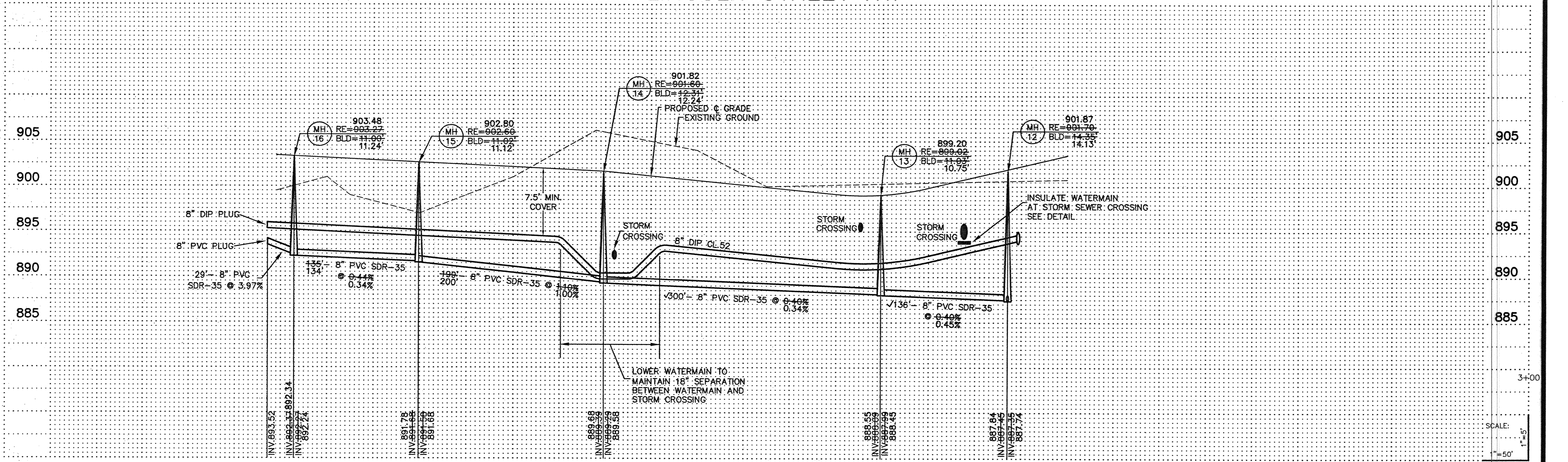


GENERAL NOTES:

- 1.) SANITARY SEWER SERVICES SHALL BE 4" PVC SDR-35.
- 2.) SANITARY SEWER SERVICE WYES ARE STATIONED FROM DOWN STREAM MANHOLE.
- 3.) WATER SERVICES SHALL BE 1" COPPER TYPE "K" W/ 7.5' MINIMUM COVER.
- 4.) SANITARY SEWER INVERTS ARE SHOWN AT THE BEND JUST BEFORE THE RISER PIPE.
- 5.) SANITARY SEWER & WATER SERVICES SHALL BE CONSTRUCTED 10' BEYOND RIGHT-OF-WAY.



LINCOLN STREET NW



PIONEER engineering
 LAND SURVEYORS • CIVIL ENGINEERS
 LAND PLANNERS • LANDSCAPE ARCHITECTS
 2422 Enterprise Drive
 Mendota Heights, MN 55120
 (612) 885-1844 FAX: 885-8488
 825 Highway 10 W.E.
 Brown, MN 55304
 (763) 783-8852 FAX: 783-1883

I hereby certify that this plan was prepared by me or under my direct supervision and that I am a duly Licensed Professional Engineer under the laws of the State of Minnesota.

Name: *Paul J. Ciferne*
 Reg. No.: 19860 Date: 8/31/01

2. AS-BUILT
 1. PER CITY REVIEW.
 Revisions:
 1. 10/1/01
 2. 03/11/03

Date: 8/31/01
 Designed: PJC
 Drawn: SAG

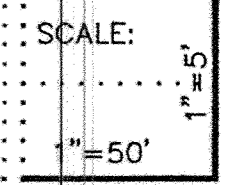
SHEET TITLE: SANITARY SEWER & WATERMAIN

OWNER: GOLD NUGGET
 8857 ZEALAND AVENUE NORTH
 BROOKLYN PARK, MINNESOTA 55445

PROJECT: KLIEVER LAKE FIELDS PHASE 1

SHEET 4 OF 20 SHEETS

RECORD PLAN 03/11/03



J:\DWG\000376-ELK RIVER\DWG\000376S30.dwg 01/11/02 00:03:13 PM CST

S&W PRODUCTS • NEW HOPE, MINNESOTA
 PREPARED BY PAUL J. CIFERNE
 PROJECT NUMBER 0303