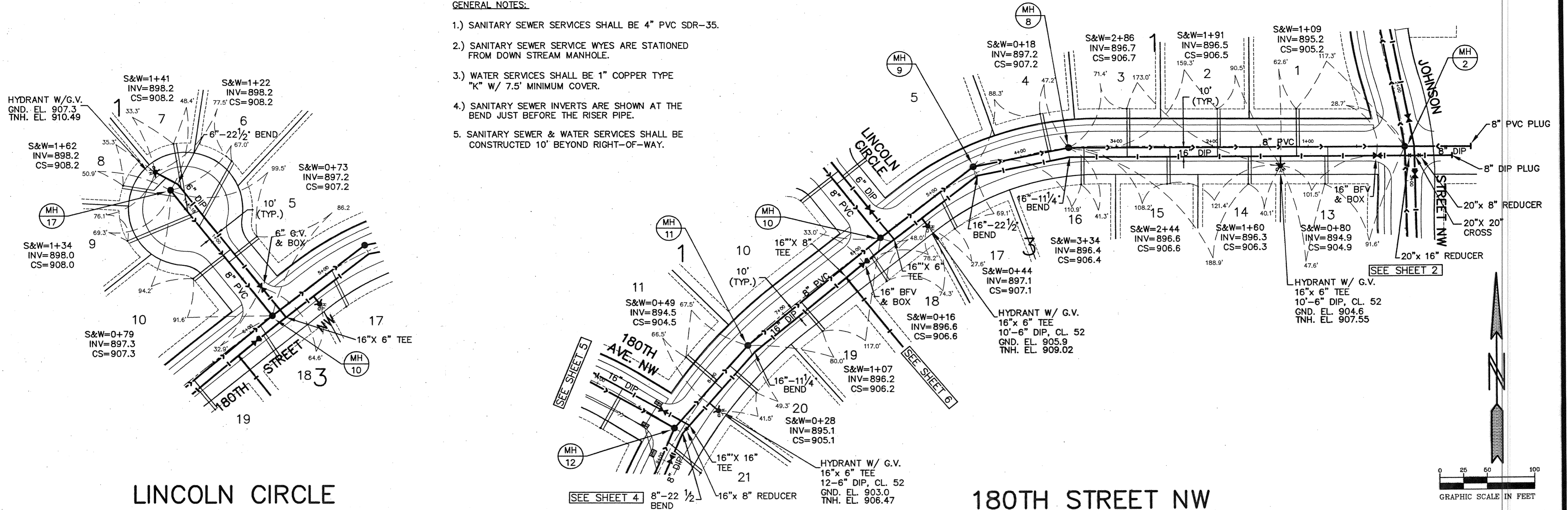


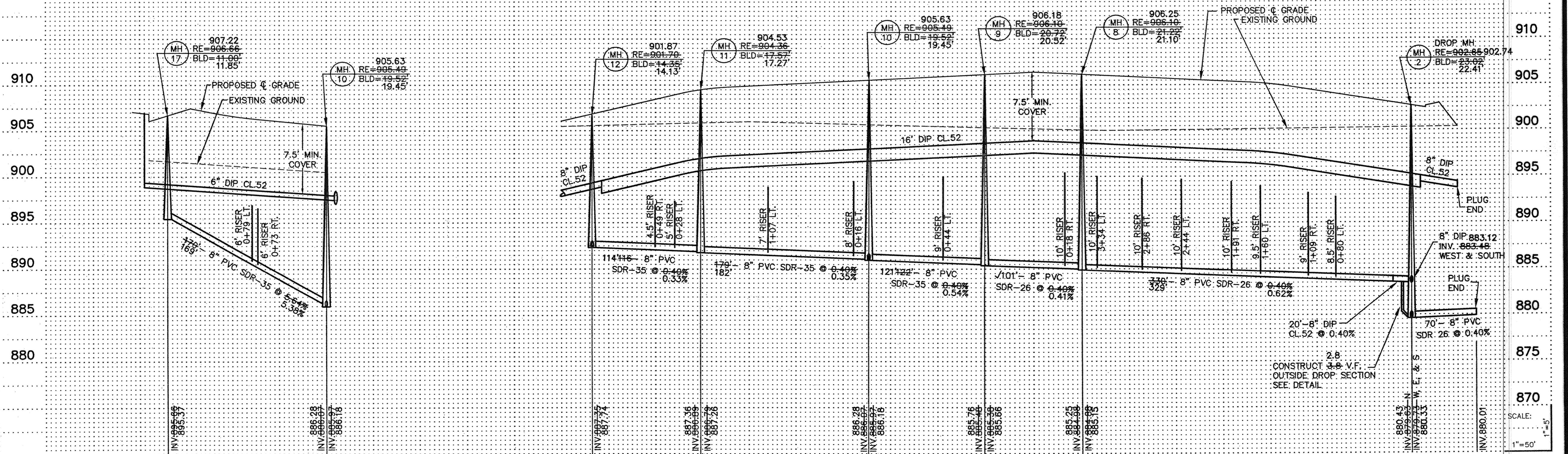
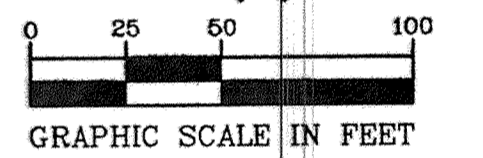
GENERAL NOTES:

- 1.) SANITARY SEWER SERVICES SHALL BE 4" PVC SDR-35.
- 2.) SANITARY SEWER SERVICE WYES ARE STATIONED FROM DOWN STREAM MANHOLE.
- 3.) WATER SERVICES SHALL BE 1" COPPER TYPE "K" W/ 7.5' MINIMUM COVER.
- 4.) SANITARY SEWER INVERTS ARE SHOWN AT THE BEND JUST BEFORE THE RISER PIPE.
- 5.) SANITARY SEWER & WATER SERVICES SHALL BE CONSTRUCTED 10' BEYOND RIGHT-OF-WAY.



LINCOLN CIRCLE

180TH STREET NW



3. EXTEND SAN. SEWER STUB ADDITIONAL 20' EAST FROM MH 2 AND PIPE TYPE.
2. REVISE SEWER ELEV'S & RISERS FROM MH 8 TO MH 2 AND STUB TO EAST; MH 2 CHANGED TO DROP MH. 5. AS-BUILT.
1. PER CITY REVIEW.
4. MH 2 INVERT ELEV. & BUILD; OUTSIDE DROP SECTION; 8" PVC STUB TO THE EAST CHANGE INVERT ELEV.

RECORD PLAN 03/11/03

PIONEER engineering
 LAND SURVEYORS - CIVIL ENGINEERS
 LAND PLANNERS - LANDSCAPE ARCHITECTS
 2422 Enterprise Drive
 Golden Valley, MN 55420
 (651) 681-1914 FAX: 681-9488
 825 Highway 10 N.E.
 Bloomington, MN 55425
 (763) 783-1880 FAX: 783-1883

I hereby certify that this plan was prepared by me or under my direct supervision and that I am a duly Licensed Professional Engineer under the laws of the State of Minnesota.

Name: *[Signature]*
 Paul J. Cheng
 Reg. No. 19860 Date 8/31/01

Revisions
 1. 10/1/01
 2. 10/29/01
 3. 11/27/01

Date: 8/31/01
 SHEET TITLE: **SANITARY SEWER & WATERMAIN**
 Designed: PJC
 Drawn: SAC

OWNER: **GOLD NUGGET**
 8857 ZEALAND AVENUE NORTH
 BROOKLYN PARK, MINNESOTA 55445

PROJECT: **KLIEVER LAKE FIELDS PHASE 1**

SHEET 3 OF 20 SHEETS

J:\p\308736-ELK RIVER.dwg 30873612.dwg 8/11/02 8:04:13 PM CST

SAPIO PRODUCTS • NEW HIRPE, MINNESOTA
 REPRODUCED BY PART NUMBER 8532
 SAPIO PRODUCTS • NEW HIRPE, MINNESOTA
 REPRODUCED BY PART NUMBER 8532
 SAPIO PRODUCTS • NEW HIRPE, MINNESOTA
 REPRODUCED BY PART NUMBER 8532