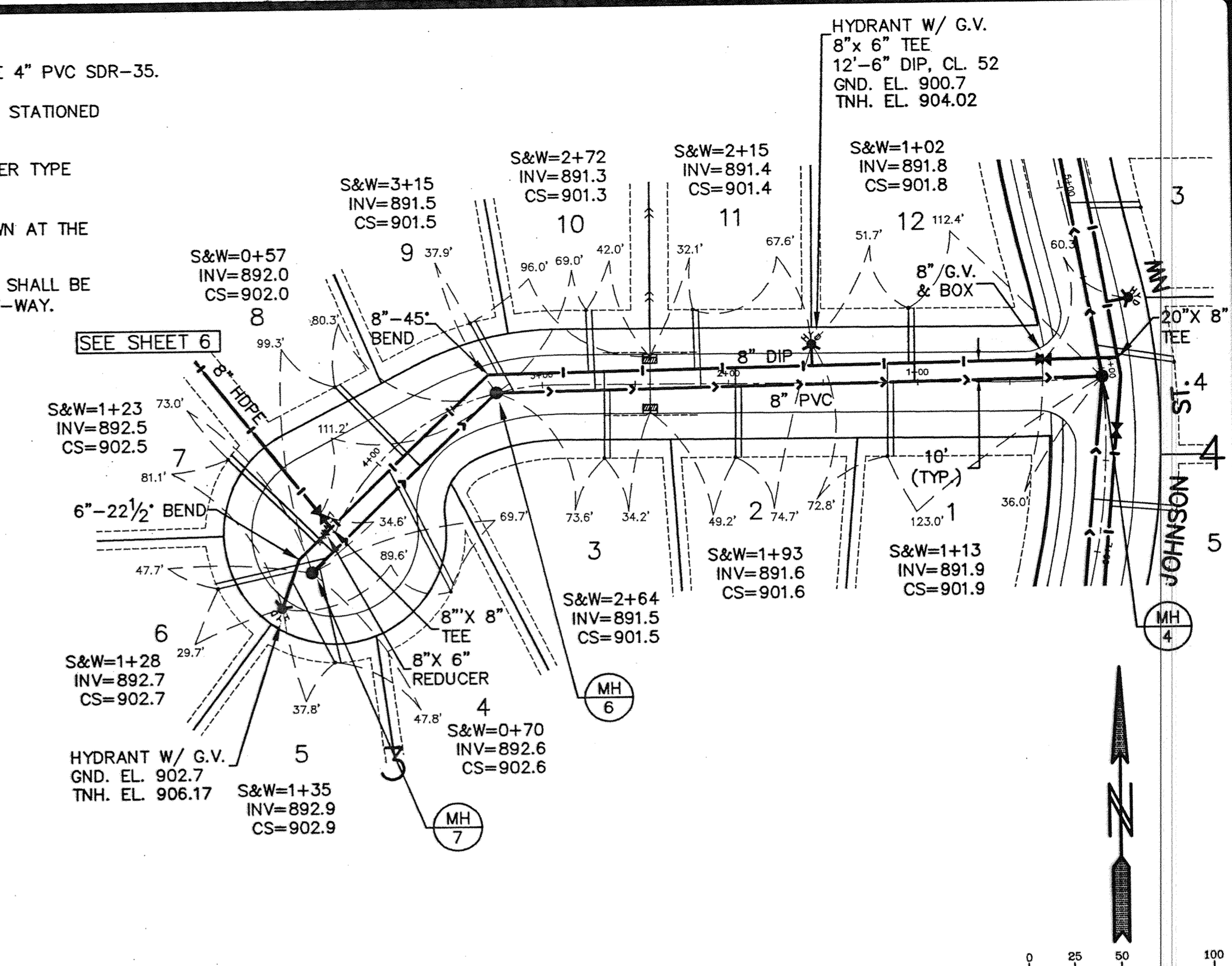
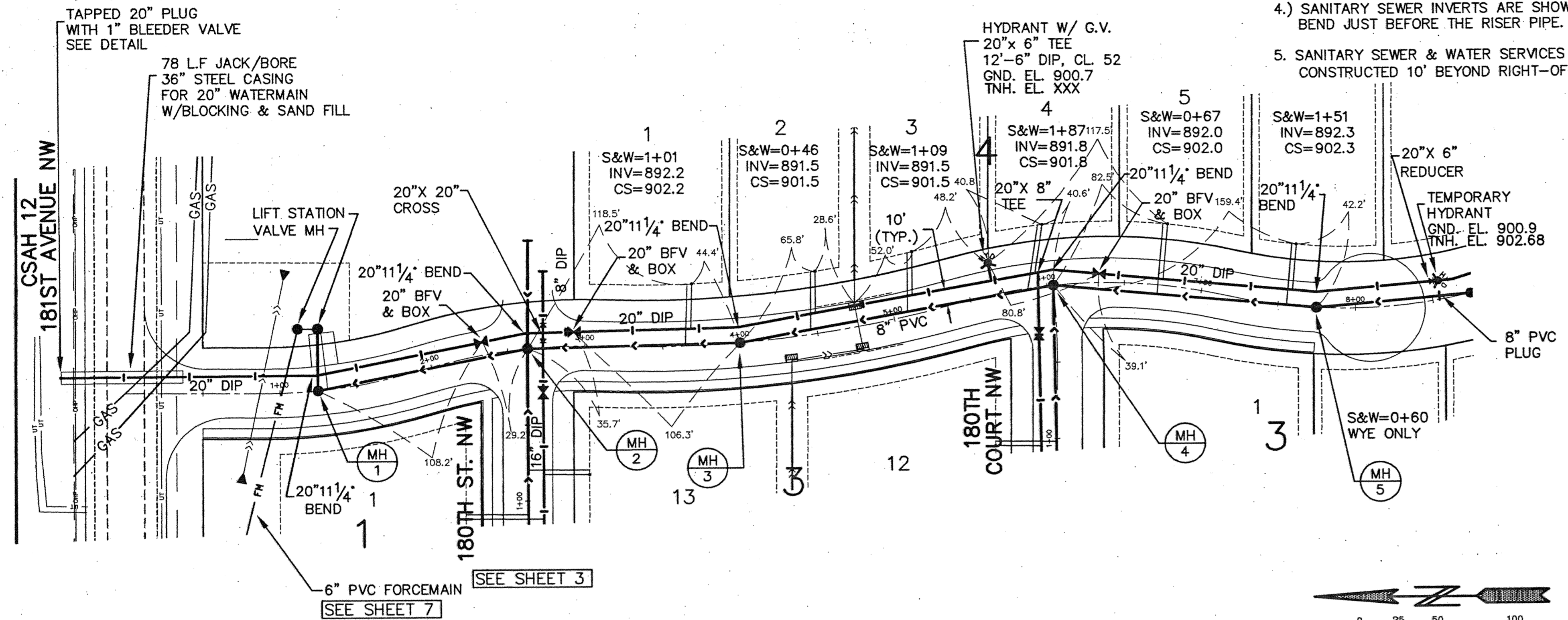


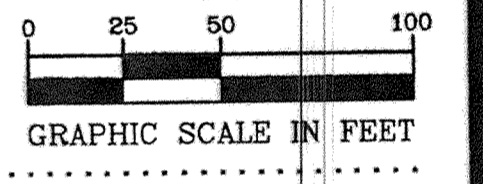
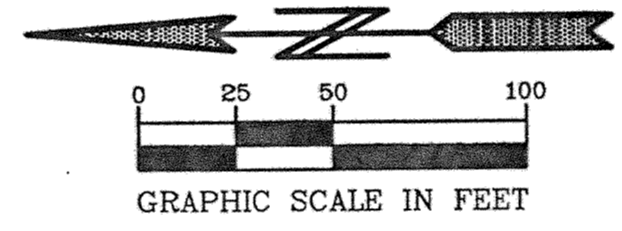


EXISTING GAS LINES TO BE EXPOSED BY ENRON.  
ENRON PERSONAL TO BE PRESENT DURING CONSTRUCTION IN COUNTY RIGHT OF WAY.  
VERIFY EXISTING GAS LINES LOCATION & ELEVATION



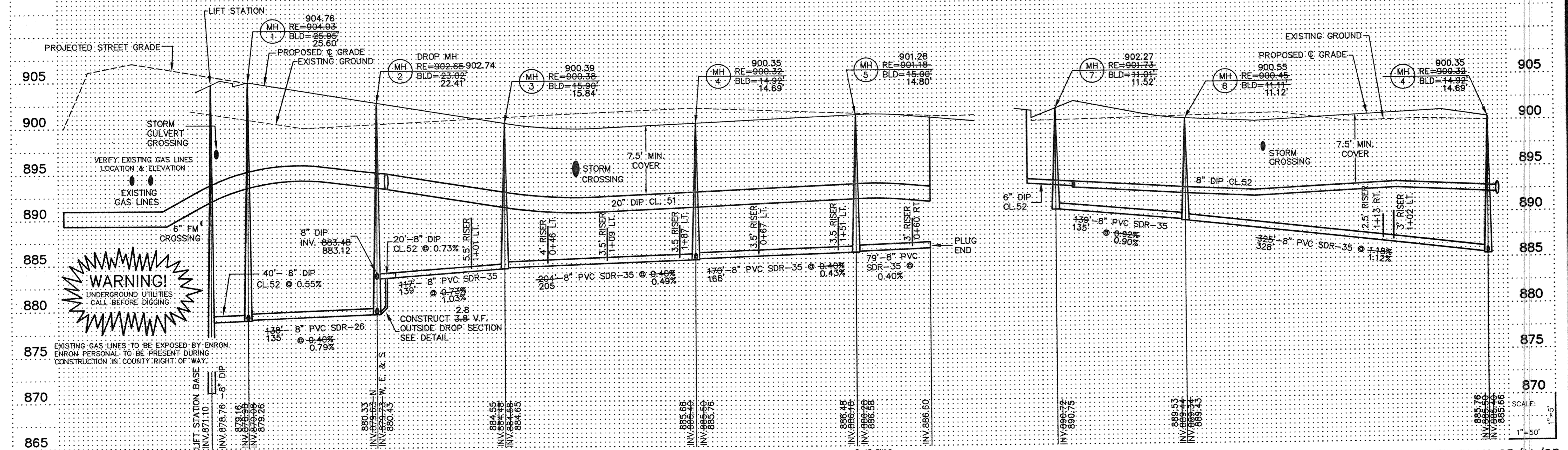
GENERAL NOTES:

- 1.) SANITARY SEWER SERVICES SHALL BE 4" PVC SDR-35.
- 2.) SANITARY SEWER SERVICE WYES ARE STATIONED FROM DOWN STREAM MANHOLE.
- 3.) WATER SERVICES SHALL BE 1" COPPER TYPE "K" W/ 7.5' MINIMUM COVER.
- 4.) SANITARY SEWER INVERTS ARE SHOWN AT THE BEND JUST BEFORE THE RISER PIPE.
- 5.) SANITARY SEWER & WATER SERVICES SHALL BE CONSTRUCTED 10' BEYOND RIGHT-OF-WAY.



JOHNSON STREET NW

180TH COURT NW



**PIONEER engineering**  
2422 Enterprise Drive  
Maple Heights, MN 55120  
(612) 881-1111 FAX: 612-881-8888  
825 Highway 10 N.E.  
Shore, MN 55554  
(763) 763-1880 FAX: 763-1883

I hereby certify that this plan was prepared by me or under my direct supervision and that I am a duly Licensed Professional Engineer under the laws of the State of Minnesota.

Name: Paul J. Chiffre  
Reg. No.: 19880 Date: 8/31/01

Revisions	Date
1. 10/1/01	5. 11/27/01
2. 10/10/01	6. 1/9/02
3. 10/29/01	7. 1/11/02

Date: 8/31/01  
Designed: PJC  
Drawn: SAG

SHEET TITLE: **SANITARY SEWER & WATERMAIN**

OWNER: **GOLD NUGGET**  
8857 ZEALAND AVENUE NORTH  
BROOKLYN PARK, MINNESOTA 55445

PROJECT: **KLIEVER LAKE FIELDS PHASE 1**

SHEET 2 OF 20 SHEETS

RECORD PLAN 03/11/03

SAICO PRODUCTS • NEW HIRPE, MINNESOTA  
 REVISION #8 PART NUMBER 8552  
 11/11/02  
 SAICO PRODUCTS • NEW HIRPE, MINNESOTA  
 REVISION #8 PART NUMBER 8552  
 11/11/02  
 SAICO PRODUCTS • NEW HIRPE, MINNESOTA  
 REVISION #8 PART NUMBER 8552  
 11/11/02