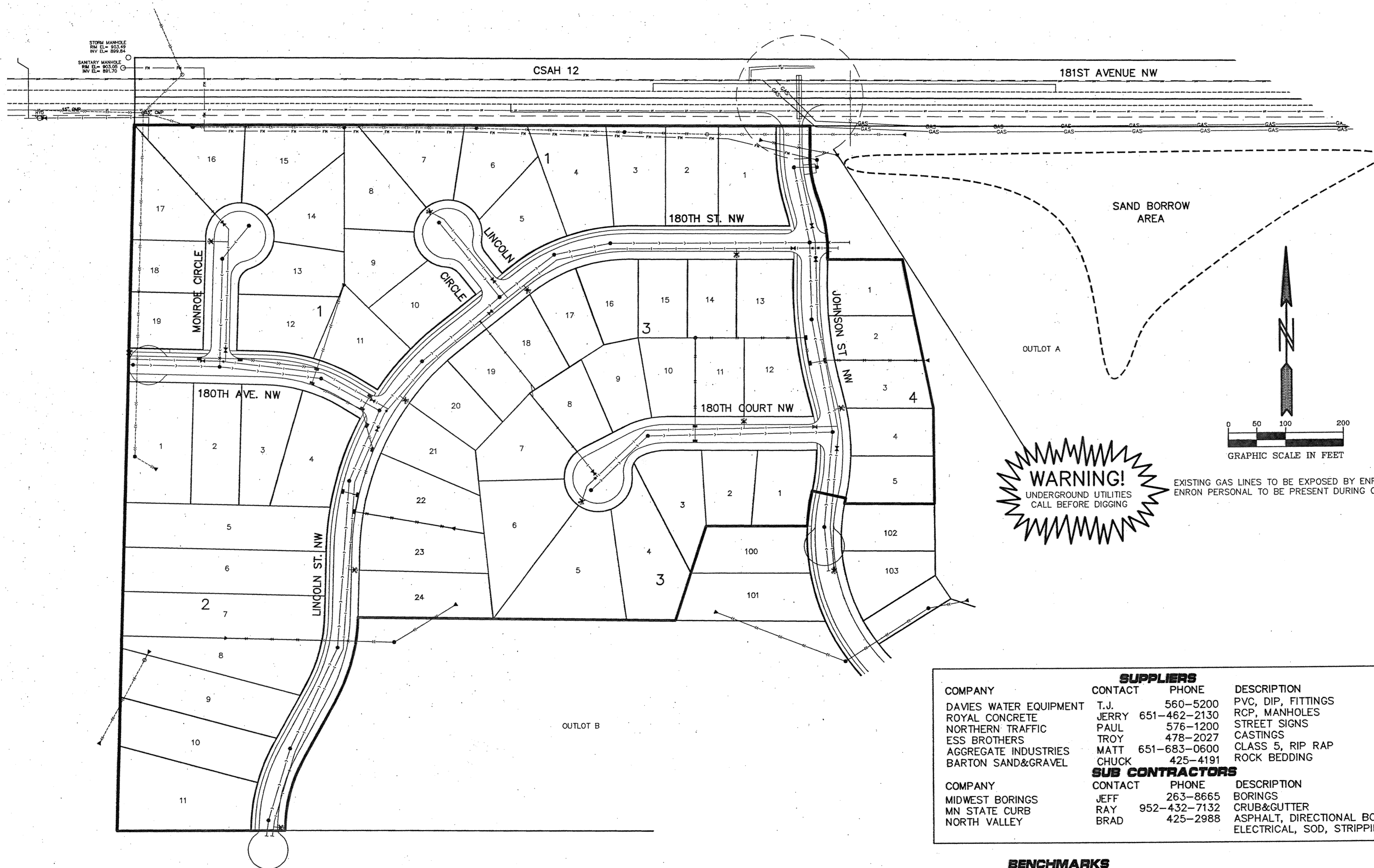
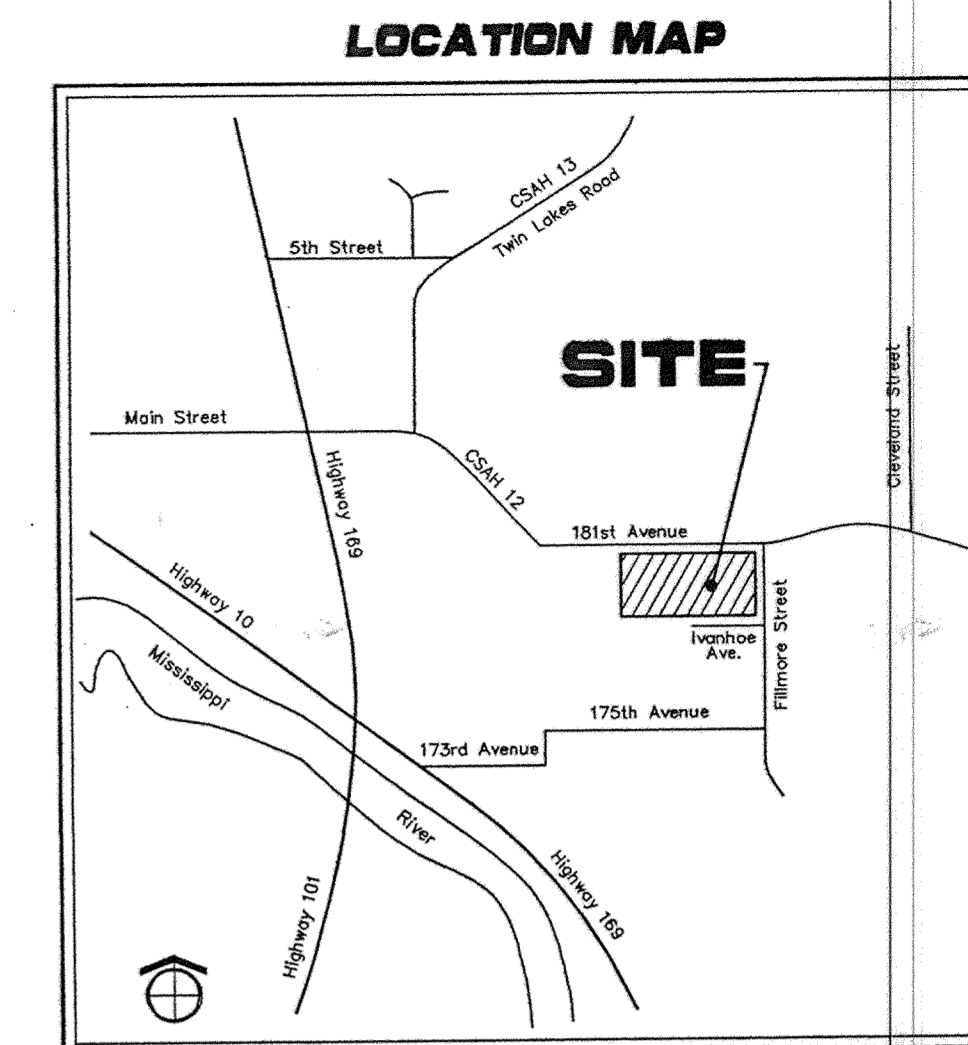


Kliever Lake Fields Elk River, Minnesota Street and Utility Construction Plans Phase 1



WARNING!
UNDERGROUND UTILITIES
CALL BEFORE DIGGING

EXISTING GAS LINES TO BE EXPOSED BY ENRON.
ENRON PERSONAL TO BE PRESENT DURING CONSTRUCTION IN COUNTY RIGHT OF WAY.

INDEX

1. COVER SHEET
2. SANITARY SEWER & WATERMAIN
3. SANITARY SEWER & WATERMAIN
4. SANITARY SEWER & WATERMAIN
5. SANITARY SEWER & WATERMAIN
6. SANITARY SEWER & WATERMAIN
7. SANITARY FORCEMAIN
8. STORM SEWER
9. STORM SEWER
10. STORM SEWER
11. STREET CONSTRUCTION
12. STREET CONSTRUCTION
13. STREET CONSTRUCTION
14. STREET CONSTRUCTION
15. BYPASS LANE CONSTRUCTION
16. LIFT STATION PLAN
17. LIFT STATION SCHEMATIC
18. DETAILS
19. DETAILS
20. DETAILS

SUPPLIERS			
COMPANY	CONTACT	PHONE	DESCRIPTION
DAVIES WATER EQUIPMENT	T.J.	560-5200	PVC, DIP, FITTINGS
ROYAL CONCRETE	JERRY	651-462-2130	RCP, MANHOLES
NORTHERN TRAFFIC	PAUL	576-1200	STREET SIGNS
ESS BROTHERS	TROY	478-2027	CASTINGS
AGGREGATE INDUSTRIES	MATT	651-683-0600	CLASS 5, RIP RAP
BARTON SAND&GRAVEL	CHUCK	425-4191	ROCK BEDDING

SUB CONTRACTORS			
COMPANY	CONTACT	PHONE	DESCRIPTION
MIDWEST BORINGS	JEFF	263-8665	BORINGS
MN STATE CURB	RAY	952-432-7132	CRUB&GUTTER
NORTH VALLEY	BRAD	425-2988	ASPHALT, DIRECTIONAL BORE ELECTRICAL, SOD, STRIPPING

BENCHMARKS

Double spike East face of power pole, West side of Fillmore Street N.W.,
50± ft. South of 178th Avenue N.W.. Elevation = 897.82 ft.

Triple spike East face of power pole, NW Quadrant of Fillmore Street and
175th Avenue N.W.. Elevation = 909.73 ft.

Prior to any excavation the contractor shall verify the location of all underground utilities.
Call 48 Hours before digging:
GOPHER STATE ONE CALL
Twin City Area 454-0002
Mn Toll Free 1-800-252-1166

RECORD PLAN 03/11/03

4. SHEET 2.
3. SHEETS 2, 3, 7, 16, & 20.
2. SHEET 2 & 20.
1. SHEETS 1-15.

7. SHEETS 2, 7, & 16.
6. SHEETS 2, 3, 7, & 16.
5. SHEET 2 & 3.

10. AS-BUILT PG 2-10
9. SHEET 8.
8. SHEET 8.

Revisions 4, 11/27/01 & 5/18/02
1. 10/1/01 5. 11/27/01 8. 5/20/03
2. 10/10/01 6. 1/9/02 10. 3/21/03
3. 10/26/01 7. 1/31/02

Date 8/31/01 SHEET TITLE
Designed PJC COVER SHEET
Drawn SAG

Name *Paul S. Cherno*
Reg. No. 19860 Date 8/31/01

I hereby certify that this plan was prepared by me or under my direct supervision and that I am a duly Licensed Professional Engineer under the laws of the State of Minnesota

PIONEER engineering
LAND SURVEYORS • CIVIL ENGINEERS
LAND PLANNERS • LANDSCAPE ARCHITECTS

2422 Enterprise Drive
Minnetonka Heights, MN 55320
(952) 881-1814 FAX (952) 881-8408
625 Highway 10, N.E.
Bloomington, MN 55425
(763) 783-1880 FAX 783-1883

OWNER GOLD NUGGET
8857 ZEALAND AVENUE NORTH
BROOKLYN PARK, MINNESOTA 55445

PROJECT KLIEVER LAKE FIELDS
PHASE 1

SHEET 1 OF 20 SHEETS

J:\Info\2003\76-ELK RIVER\Info\2003\76-ELK RIVER\03\11\03\01.dwg 05/20/2003 09:44:24 AM CST

SANDCO PRODUCTS - NEW HOPE, MINNESOTA
PRODUCED BY PART NUMBER 8535
SANDCO PRODUCTS - NEW HOPE, MINNESOTA
PRODUCED BY PART NUMBER 8535
SANDCO PRODUCTS - NEW HOPE, MINNESOTA
PRODUCED BY PART NUMBER 8535
SANDCO PRODUCTS - NEW HOPE, MINNESOTA
PRODUCED BY PART NUMBER 8535