

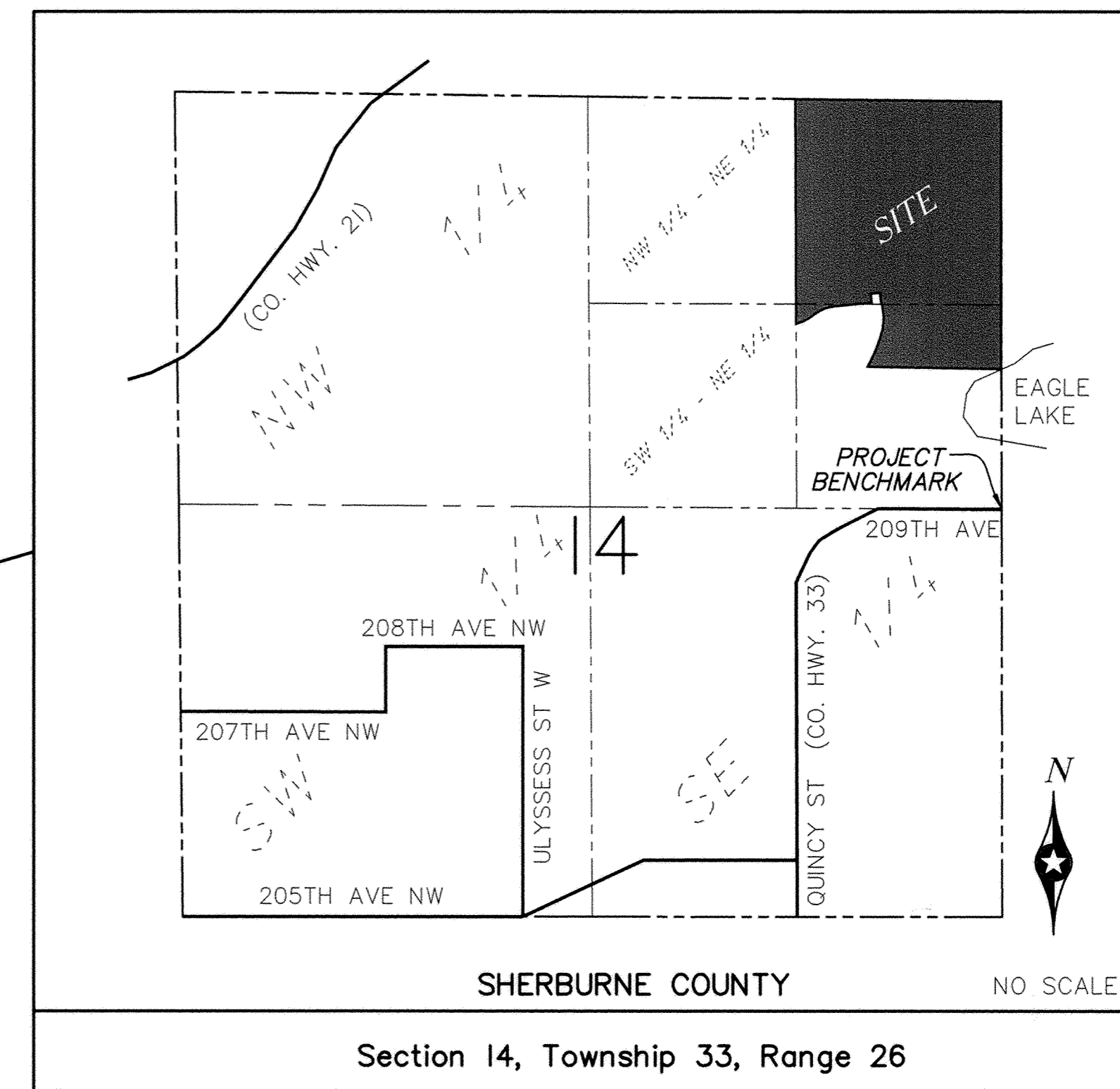
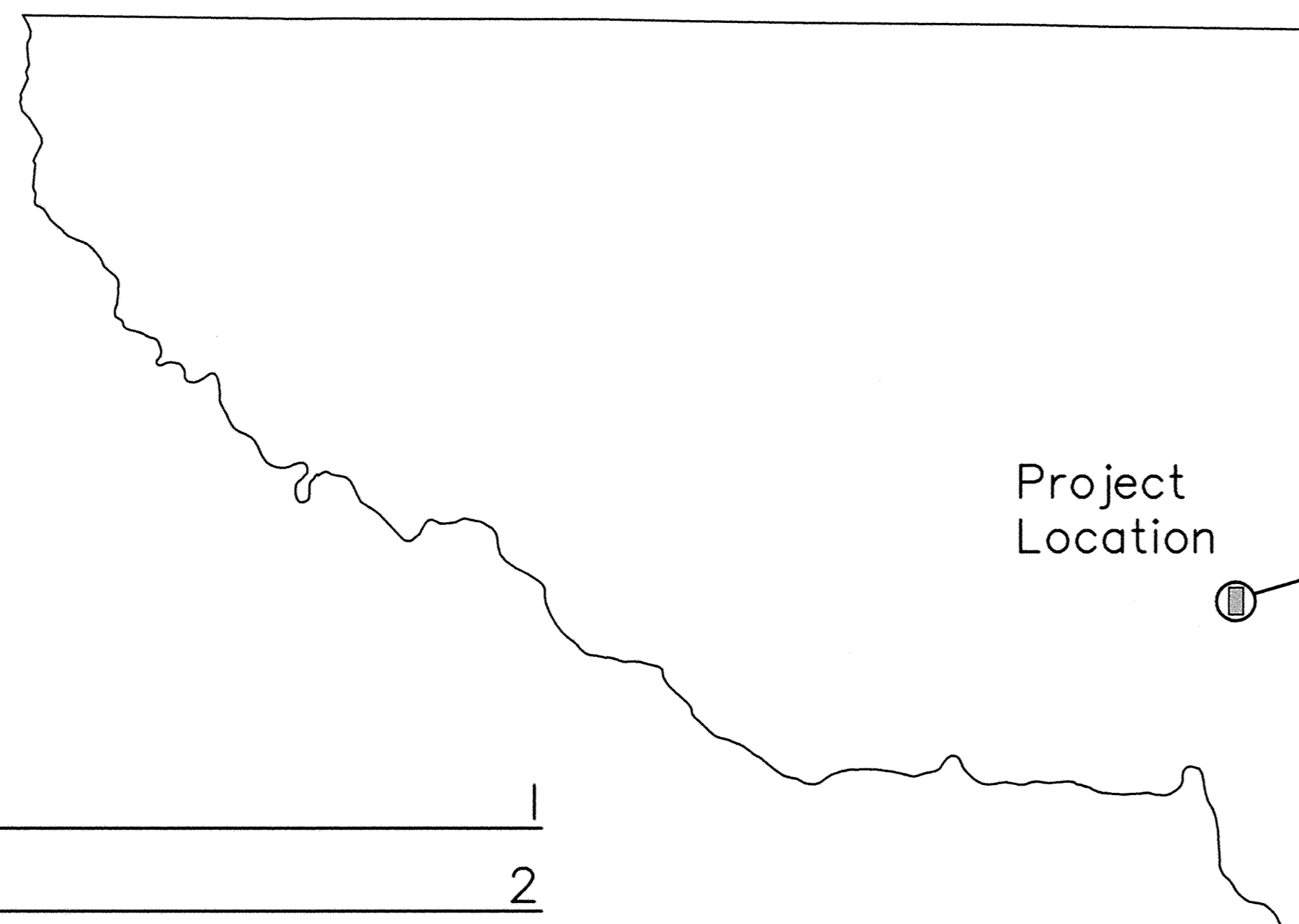
KINGDOM ESTATES 2ND ADDITION

CITY OF ELK RIVER, MINNESOTA

DENNIS T. WURM

RECORD PLAN STORM SEWER & STREET IMPROVEMENTS

SHERBURNE COUNTY, MINNESOTA



VICINITY MAP

CALL 48 HOURS BEFORE DIGGING:
GOPHER STATE ONE CALL
TWIN CITY AREA 454-0020
MINNESOTA TOLL FREE 1-800-252-1166

PROJECT BENCHMARK:
Top of Cast Iron Monument at centerline road. The
southeast corner of the east half of the NE 1/4
of Section 14, Township 33, Range 26.
Elevation=958.62 (TAYLOR LAND SURVEYORS INC.)

TITLE AND INDEX SHEET	1
GRADING PLAN	2
PROFILES	3
LANDSCAPE PLAN	4
DETAILS	5-6

RECORD PLAN
CONTRACTOR: RANDY KRAMER
DEVELOPER: DENNIS T. WURM
OBLIQUE TEXT DENOTES
AS BUILT CHANGES

I hereby certify that this plan, specification or report was prepared by me or under my direct supervision and that I am a duly Licensed Professional Engineer under the laws of the State of Minnesota. Signed: <i>Jon Bogart</i> Date: 12/14/14 Reg. No. 19900	DATE: 08/10/05	REV. NO.	DESCRIPTION
	DESIGN BY: MG	1	REVISIONS TO EROSION CONTROL MEASURES
	DRAWN BY: MG	2	REVISIONS TO PROFILE STATIONING
CHECKED BY: DS	3	RECORD DRAWINGS	
DWG FILE: T_PP_COVER			
FILE NO.: 05-0356.00			
BOGART, PEDERSON & ASSOCIATES, INC.			
LAND SURVEYING CIVIL ENGINEERING MAPPING			
1070 13TH STREET, BECKER, MN 55505-8322 TEL: 763-882-8822 FAX: 763-282-8844			
KINGDOM ESTATES 2ND ADD.			
City of Elk River, Mn.			
Dennis T. Wurm			
TITLE & INDEX SHEET			
SHEET NO. 6			

2025 LEGAL NOTICE: I, DENNIS T. WURM, LICENSED PROFESSIONAL ENGINEER, NO. 19900, STATE OF MINNESOTA, HEREBY CERTIFY THAT THIS PLAN, SPECIFICATION, OR REPORT WAS PREPARED BY ME OR UNDER MY DIRECT SUPERVISION AND THAT I AM A DULY LICENSED PROFESSIONAL ENGINEER UNDER THE LAWS OF THE STATE OF MINNESOTA.