

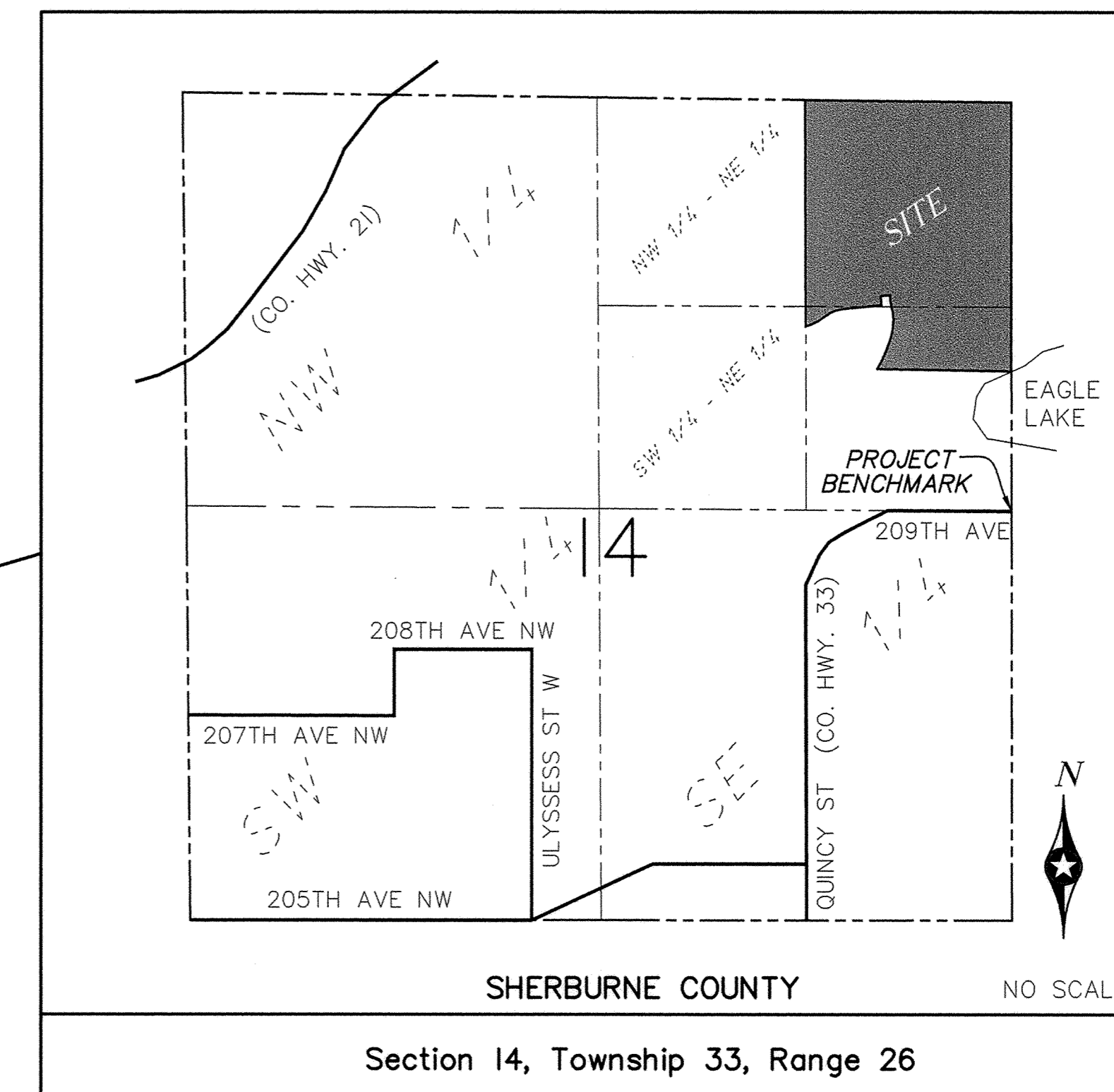
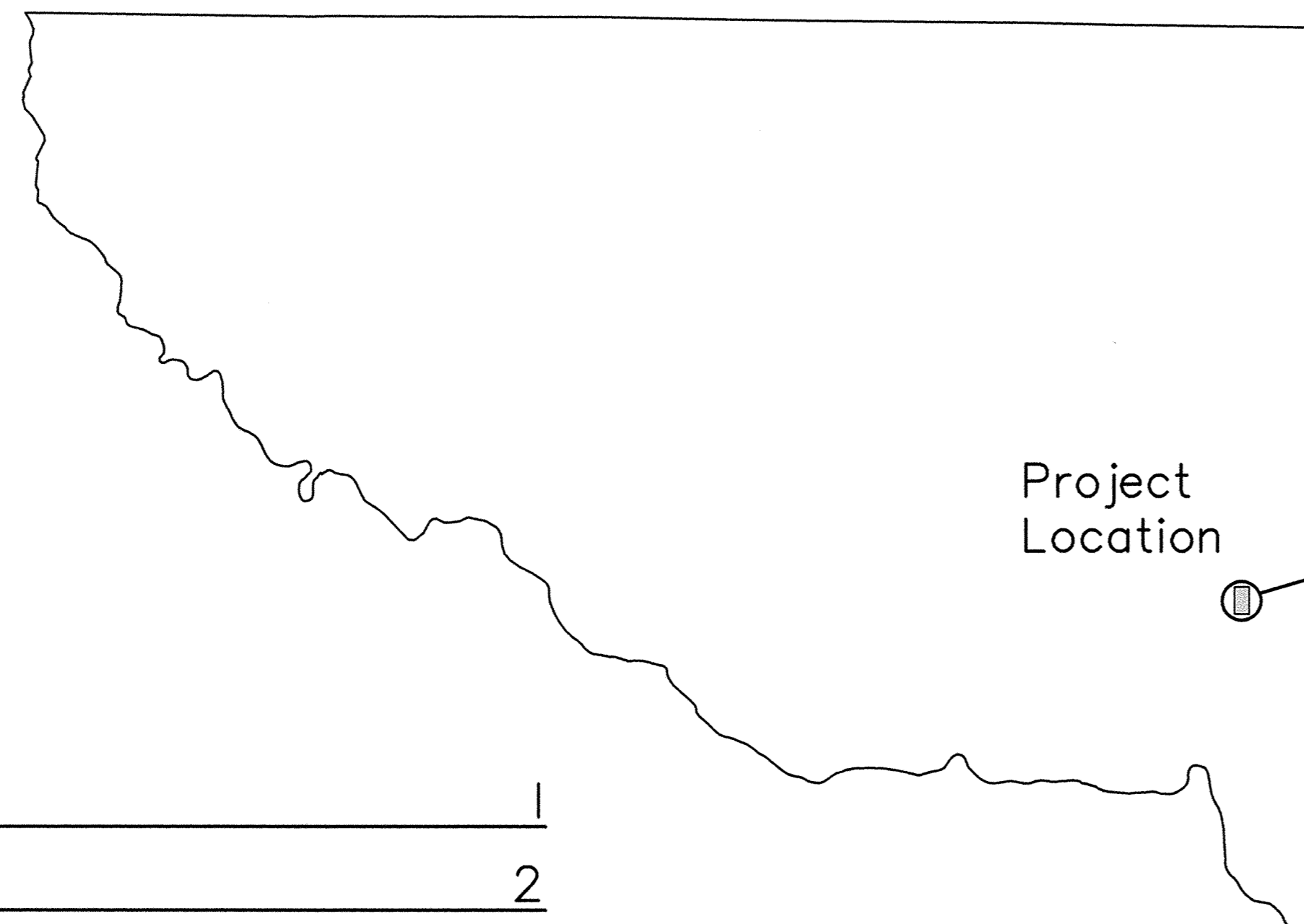
KINGDOM ESTATES 2ND ADDITION

CITY OF ELK RIVER, MINNESOTA

DENNIS T. WURM

RECORD PLAN STORM SEWER & STREET IMPROVEMENTS

SHERBURNE COUNTY, MINNESOTA



VICINITY MAP

CALL 48 HOURS BEFORE DIGGING:
GOPHER STATE ONE CALL
TWIN CITY AREA 454-0020
MINNESOTA TOLL FREE 1-800-252-1166

PROJECT BENCHMARK:
Top of Cast Iron Monument at centerline road. The southeast corner of the east half of the NE 1/4 of Section 14, Township 33, Range 26.
Elevation=958.62 (TAYLOR LAND SURVEYORS INC.)

TITLE AND INDEX SHEET	1
GRADING PLAN	2
PROFILES	3
LANDSCAPE PLAN	4
DETAILS	5-6

RECORD PLAN

CONTRACTOR: RANDY KRAMER

DEVELOPER: DENNIS T. WURM

OBLIQUE TEXT DENOTES AS BUILT CHANGES

I hereby certify that this plan, specification, or report was prepared by me, or under my direct supervision and that I am a duly Licensed Professional Engineer under the laws of the State of Minnesota. Signed: <i>Greg Bowles</i> Date: <u>9/18/05</u> Reg. No. 41929	DATE: 08/10/05 DESIGN BY: MG DRAWN BY: MG CHECKED BY: DS DWG FILE: 1_PP_COVER FILE NO.: 05-0356.00	REV NO. 1 DATE 09/06/05 DESCRIPTION REVISIONS TO EROSION CONTROL MEASURES
	REV NO. 2 DATE 09/08/05 DESCRIPTION REVISIONS TO PROFILE STATIONING	SHEET NO. 6 TITLE & INDEX SHEET

BOGART, PEDERSON & ASSOCIATES, INC.
 LAND SURVEYING
 CIVIL ENGINEERING
 MAPPING
 15076 FIRST STREET, BECKER, MN 55308-8322
 TEL: 763-682-0822 FAX: 763-682-0844

KINGDOM ESTATES 2ND ADD.
 City of Elk River, Mn.
 Dennis T. Wurm

SHEET NO. 6