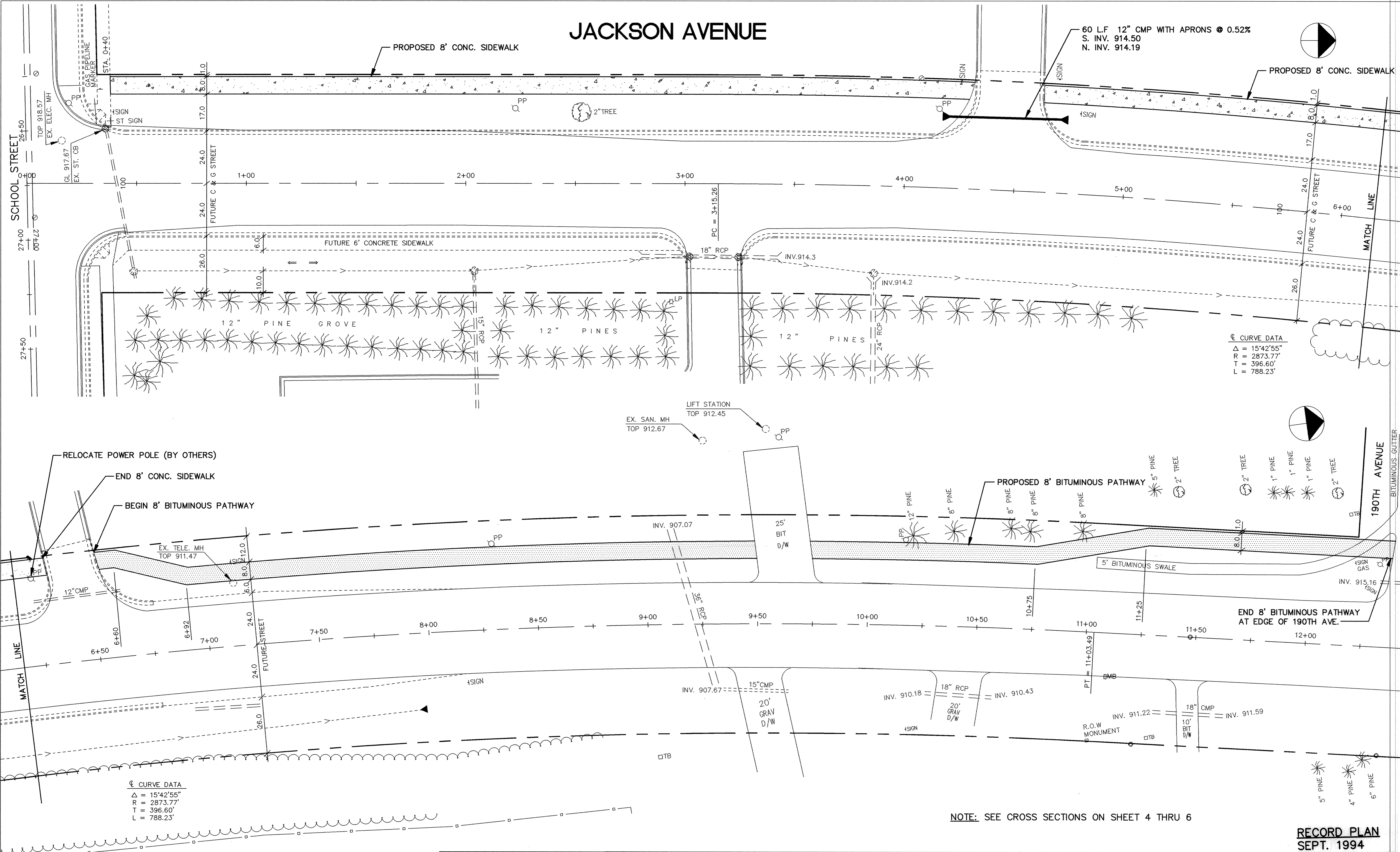


# JACKSON AVENUE



60 L.F. 12" CMP WITH APRONS @ 0.52%  
 S. INV. 914.50  
 N. INV. 914.19

⊕ CURVE DATA  
 Δ = 15°42'55"  
 R = 2873.77'  
 T = 396.60'  
 L = 788.23'

⊕ CURVE DATA  
 Δ = 15°42'55"  
 R = 2873.77'  
 T = 396.60'  
 L = 788.23'

NOTE: SEE CROSS SECTIONS ON SHEET 4 THRU 6

**RECORD PLAN**  
 SEPT. 1994

ER175SW1.DWG

I HEREBY CERTIFY THAT THIS PLAN, SPECIFICATION, OR REPORT WAS PREPARED BY ME OR UNDER MY DIRECT SUPERVISION AND THAT I AM A DULY REGISTERED PROFESSIONAL ENGINEER UNDER THE LAWS OF THE STATE OF MINNESOTA.  
*Mark S. Sturham*  
 DATE 9/17/93 REG. NO. 19130

**MS&A** CONSULTING ENGINEERS  
 Maier Stewart & Associates Inc.  
 1959 SLOAN PLACE [612] 774-6021 ST. PAUL, MINNESOTA 55117

DATE	DESCRIPTION	DESIGNED CG
		CHECKED MJG
		DRAWN CG
GRAPHIC SCALE		
0	HORIZ. 20'	
0	VERT.	

CITY OF ELK RIVER  
 SIDEWALK CONSTRUCTION  
 S.A.P. 204-104-05  
 JACKSON AVENUE

DATE SEPT. 1993	SHEET 3 OF 6 SHEETS	PROJECT NO. 230-175
-----------------	---------------------	---------------------

DRAWING NUMBER JACKS.93  
 SAICO PRODUCTS • NEW HOPE, MINNESOTA  
 REORDER BY PART NUMBER 8582  
 DRAWING NUMBER 3  
 SAICO PRODUCTS • NEW HOPE, MINNESOTA  
 REORDER BY PART NUMBER 8582  
 DRAWING NUMBER JACKS.93  
 SAICO PRODUCTS • NEW HOPE, MINNESOTA  
 REORDER BY PART NUMBER 8582  
 DRAWING NUMBER 3  
 SAICO PRODUCTS • NEW HOPE, MINNESOTA  
 REORDER BY PART NUMBER 8582  
 DRAWING NUMBER JACKS.93