

PLAN SYMBOLS

- SECTION LINE
- QUARTER LINE
- SIXTEENTH LINE
- RIGHT OF WAY
- CENTER LINE
- FENCE LINE
- RIVER OR CREEK
- LAKE OR POND
- CULVERT
- BRIDGE
- RETAINING WALL
- TREES
- BRUSH OR SHRUBS
- HEDGE
- CONIFERS
- SWAMP
- MAILBOX
- SIGN

UTILITIES SYMBOLS

- SANITARY SEWER
- STORM SEWER
- WATERMAIN
- GAS LINE
- POWER LINE
- MANHOLE
- CATCH BASIN
- VALVE
- HYDRANT
- POWER OR TELEPHONE POLE
- LIGHT POLE
- ANCHOR
- SOIL BORING

CITY OF ELK RIVER

SECTION 34, T33N, R26W

GRADING, CONCRETE AND BITUMINOUS SIDEWALK

JACKSON AVENUE SIDEWALK

M.S.A.S. S.A.P. 204-104-05

BETWEEN SCHOOL STREET AND 190TH AVENUE

GROSS LENGTH	<u>1200</u>	FEET	<u>0.23</u>	MILES
BRIDGE LENGTH	<u>0</u>	FEET	<u>0</u>	MILES
EXCEPTION LENGTH	<u>0</u>	FEET	<u>0</u>	MILES
NET LENGTH	<u>1200</u>	FEET	<u>0.23</u>	MILES

SCALES: PLAN 1" = 20'

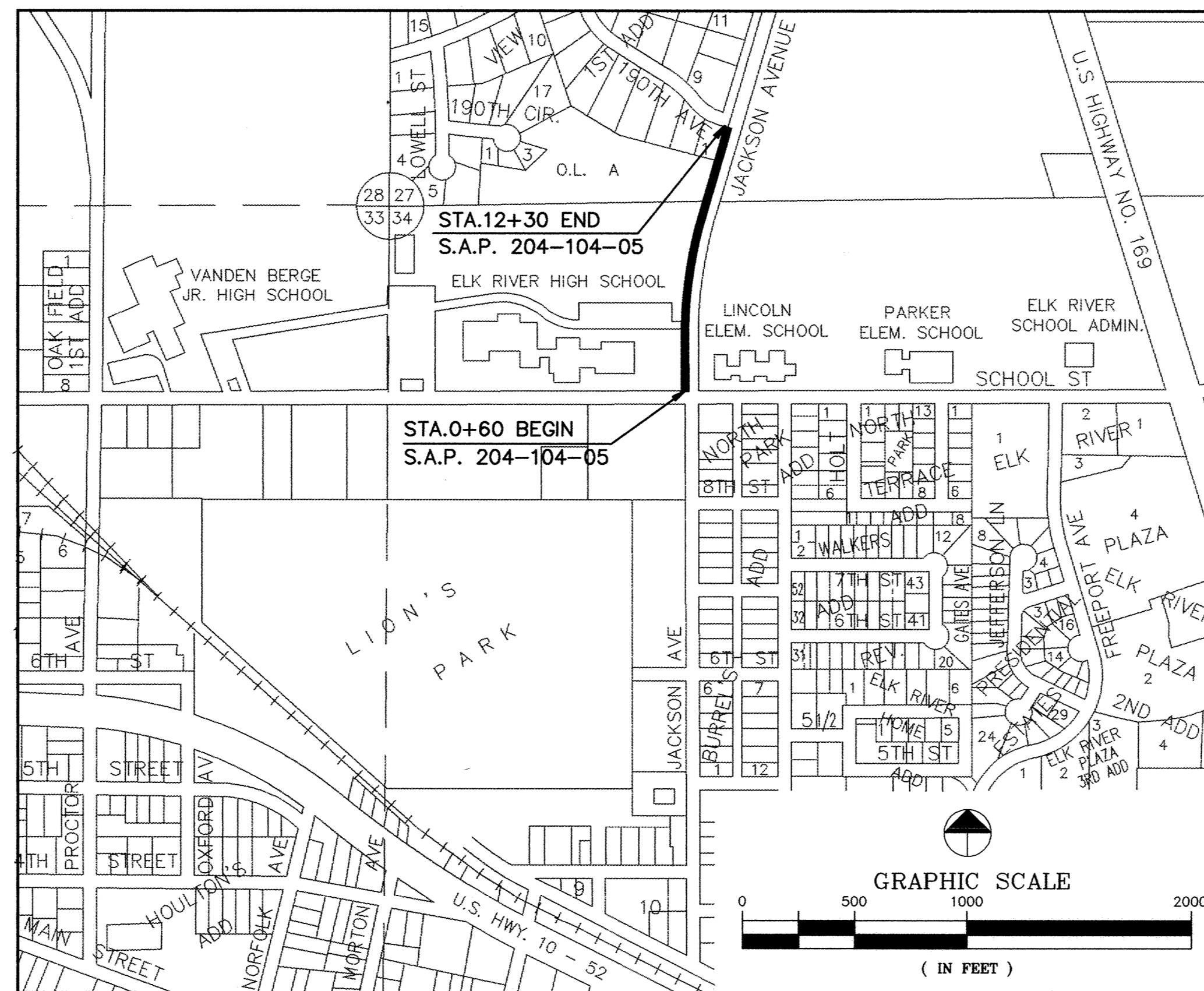
PROFILE
HORIZONTAL 1" = 20'
VERTICAL 1" = 5'

CROSS SECTIONS
HORIZONTAL 1" = 10'
VERTICAL 1" = 5'

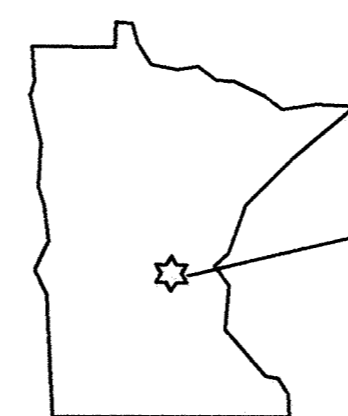
INDEX OF SHEETS

- 1 TITLE SHEET AND LOCATION MAP
- 2 ESTIMATED QUANTITIES, TYPICAL SECTIONS, AND NOTES
- 3 SIDEWALK PLAN
- 4 CROSS SECTIONS
- 5 CROSS SECTIONS
- 6 CROSS SECTIONS

*NOT THESE HAVE NOT BEEN
A-FILED THROUGH D...
THE CITY COMMISSION...
ELK RIVER - MAIER STEWART & ASSOCIATES
SIDEWALK PROJECTS
REASONING PLAN*



THE 1988 EDITION OF THE MINNESOTA DEPARTMENT OF TRANSPORTATION
"STANDARD SPECIFICATION FOR CONSTRUCTION" TOGETHER WITH
"SUPPLEMENTAL SPECIFICATIONS" DATED JANUARY 2, 1991, SHALL GOVERN.



PROJECT LOCATION
COUNTY: SHERBURNE
DISTRICT: BRAINERD

I HEREBY CERTIFY THAT PLAN, SPECIFICATION, OR REPORT WAS PREPARED BY ME
OR UNDER MY DIRECT SUPERVISION AND THAT I AM DULY REGISTERED PROFESSIONAL
ENGINEER UNDER THE LAWS OF THE STATE OF MINNESOTA.

Mark J. Graham 19130 9/17/93
REG. NO. DATE

APPROVED Tony Maurer 9/17/93
CITY ENGINEER DATE

RECOMMENDED FOR APPROVAL Michael K. Tandy 9/22/93
DISTRICT STATE AID ENGINEER DATE

RECOMMENDED FOR APPROVAL Mark G. Giesecke 7-27-93
STATE PLANS & SPEC. ENGINEER DATE

APPROVED Dennis C. Carlson 9/29/93
STATE AID DIRECTOR DATE

PREPARED BY:

CONSULTING ENGINEERS
Maier Stewart & Associates Inc.

M.S.A.S. S.A.P. 204-104-05

SHEET 1 OF 6

RECORD PLAN
SEPT. 1994