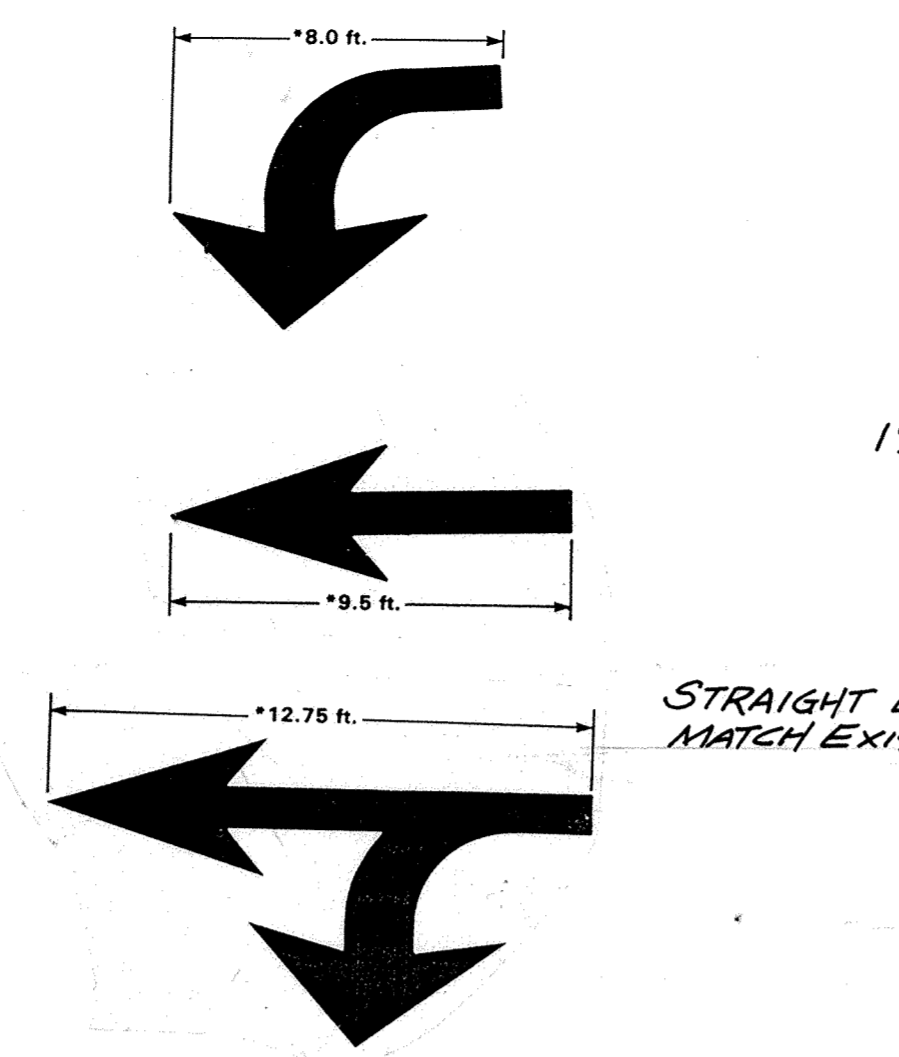


TREE PLANTING DETAIL (STA 35+50 TO STA. 39+30 SOUTH SIDE) 63 TREES REQUIRED

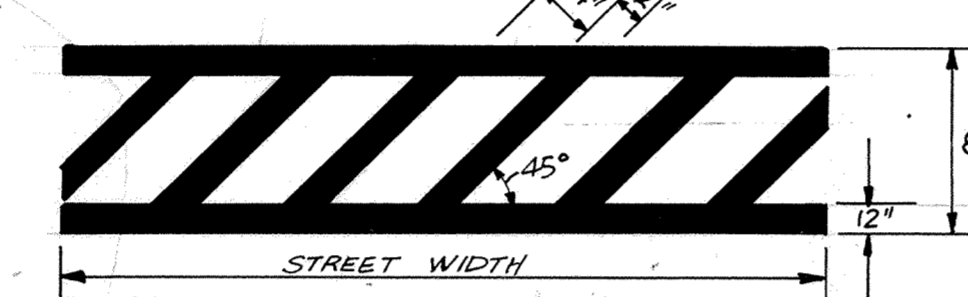
STRIPING LEGEND

PAVEMENT MARKINGS LINE TYPE	NO. AND COLOR	LINE WIDTH
1 Pavement Edge	Solid White	4"
2 Lane Line	Skip White (10' Stripe w/40' Gap)	4"
3 No Passing	Solid Yellow	4"
4 Pavement Arrow	Solid White	16"
5 R/R Crossing	White	18"
Stop Bar	White	18"

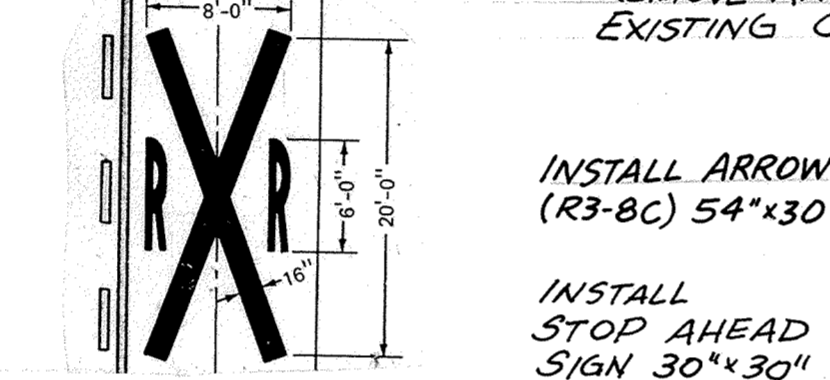
NOTE: STRIPING LUMP SUM BID TO INCLUDE 12 CROSS WALKS AND 12 STOP BARS. LOCATION TO BE DETERMINED BY ENGINEER.



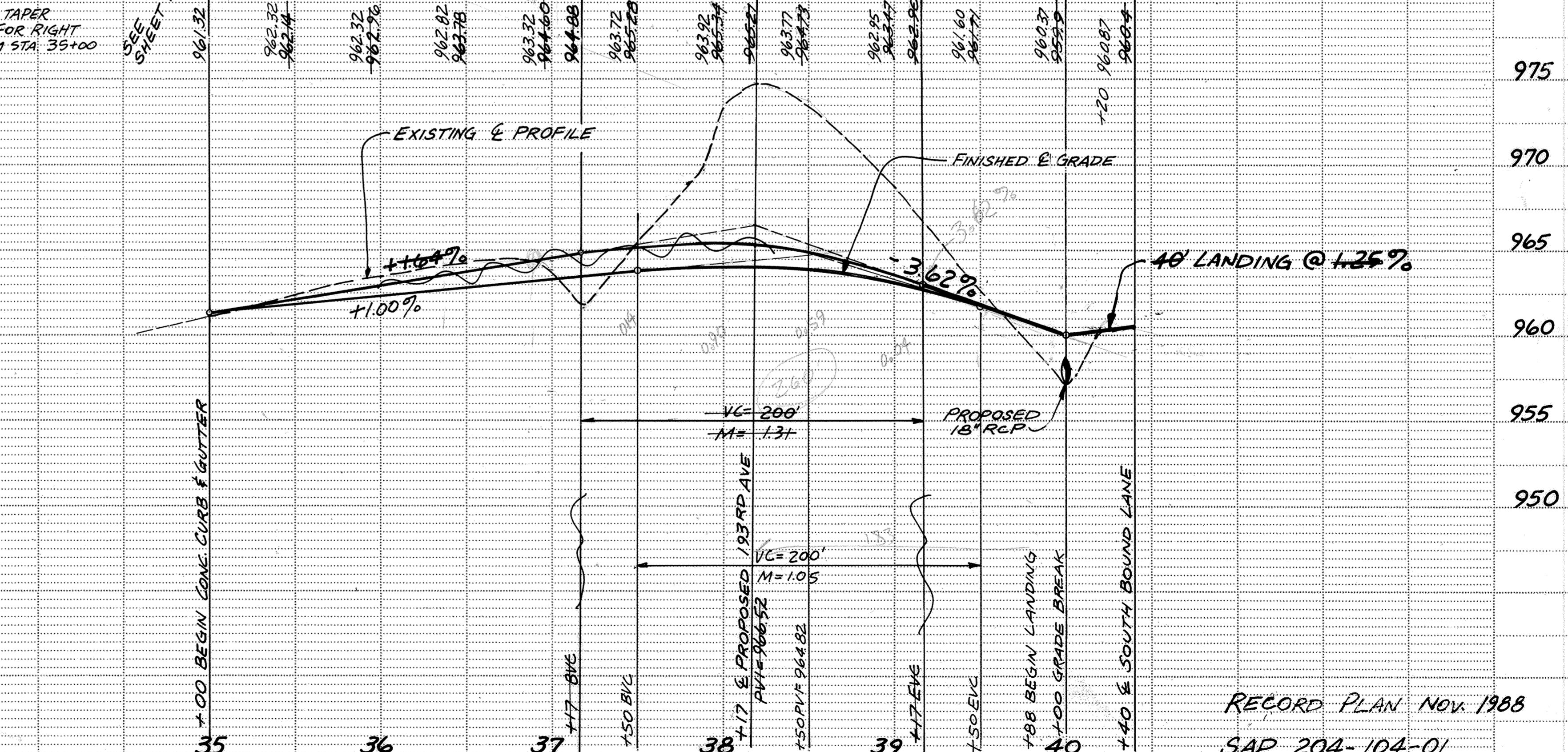
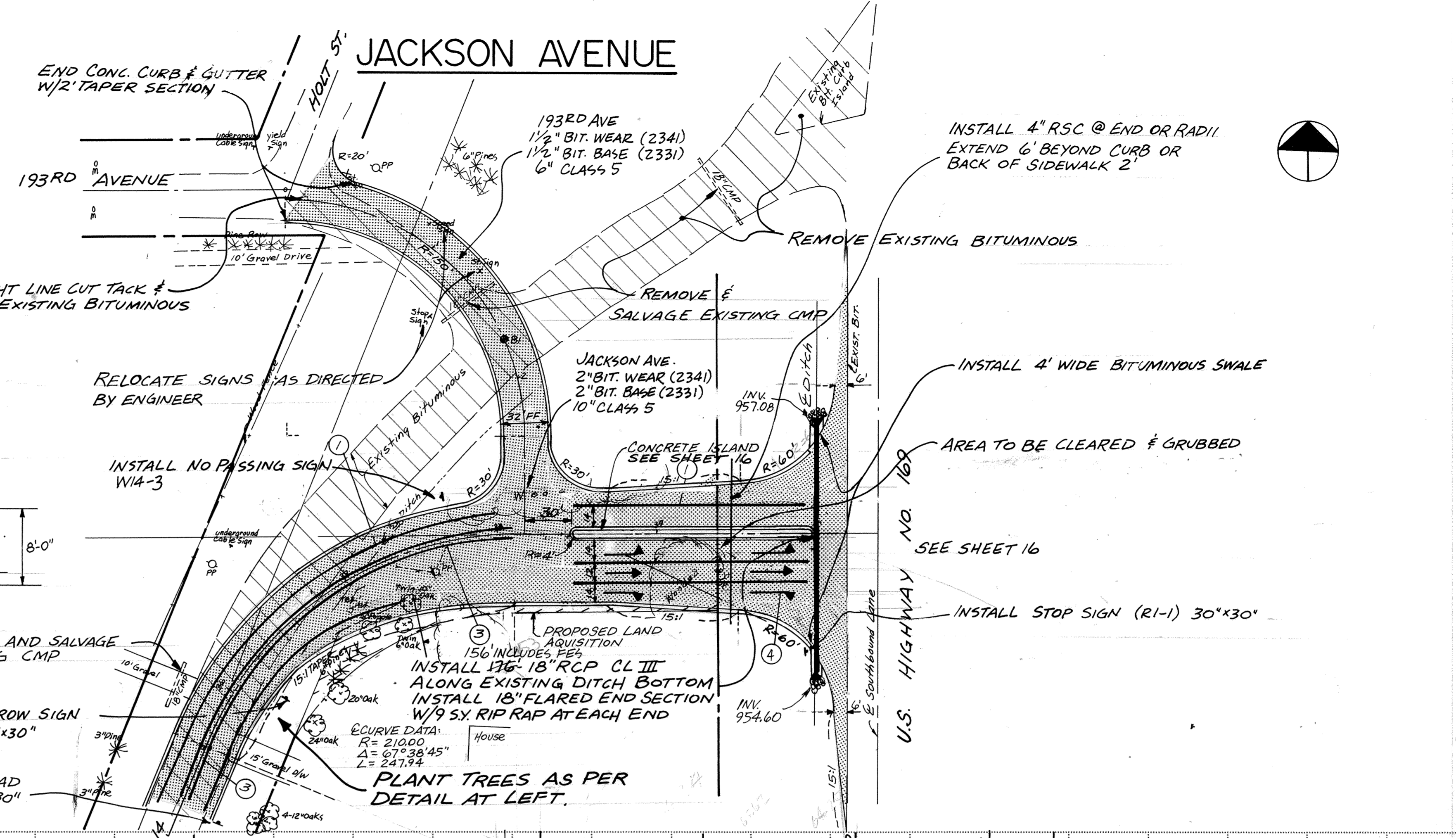
ARROW DETAILS



CROSSWALK DETAIL



RAILROAD CROSSING DETAIL



CONSULTING ENGINEERS
Maier Stewart & Associates Inc.
1959 SLOAN PLACE (612)774-6021 ST. PAUL, MINNESOTA 55117

REVISIONS	DATE	DESCRIPTION	DESIGNED	CHECKED	DRAWN
1	5/17/88	Add Conc. Island			MRJ
2	6/28/88	40' Landing Intersection Rad's/RCP Length			

CITY OF ELK RIVER
STREET CONSTRUCTION
JACKSON AVENUE ~ 193RD AVENUE

RECORD PLAN NOV. 1988
SAP 204-104-01

DATE Aug 1987 SHEET 15 OF 28 SHEETS PROJECT NO. 230-032

DRAWING NUMBER JACKS 87