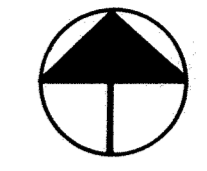
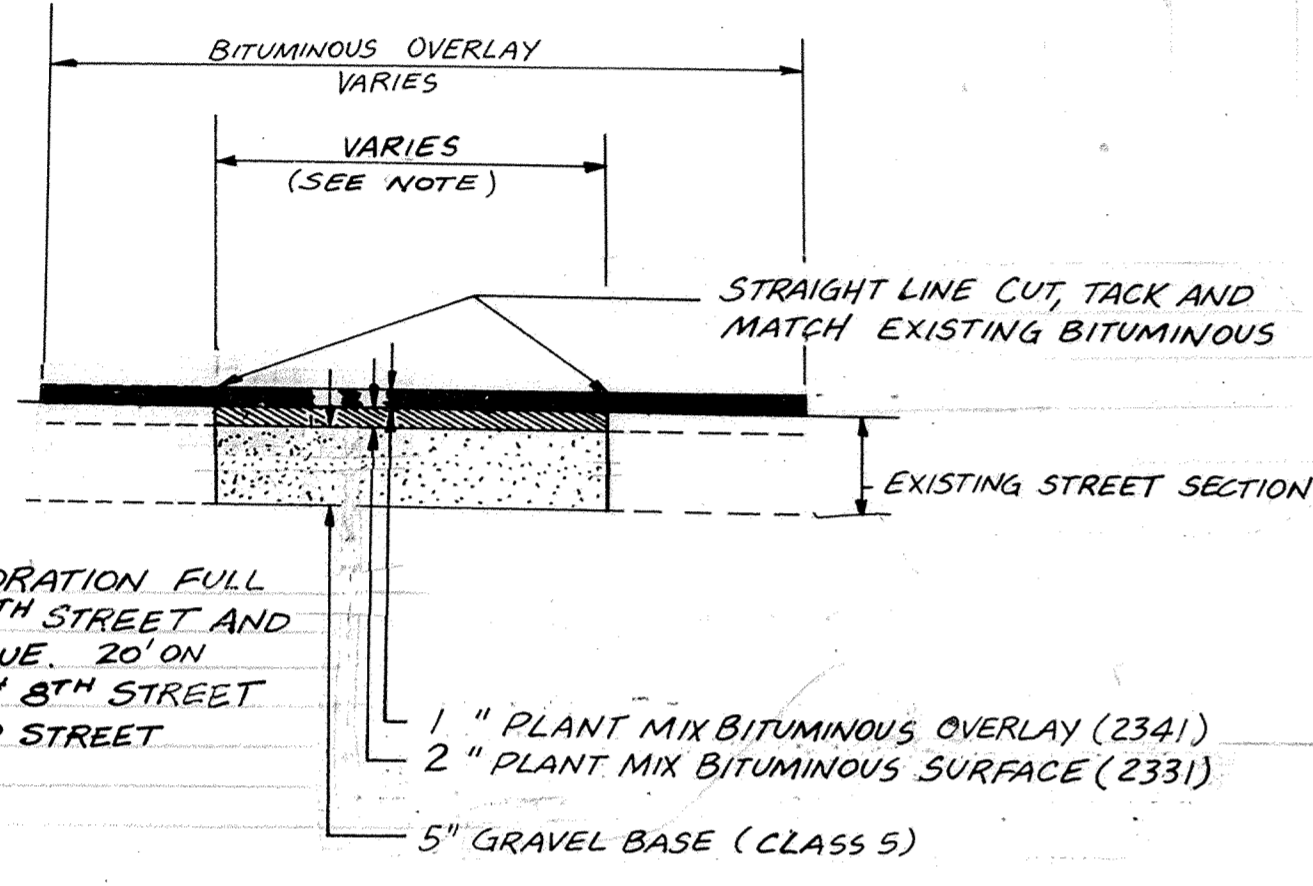
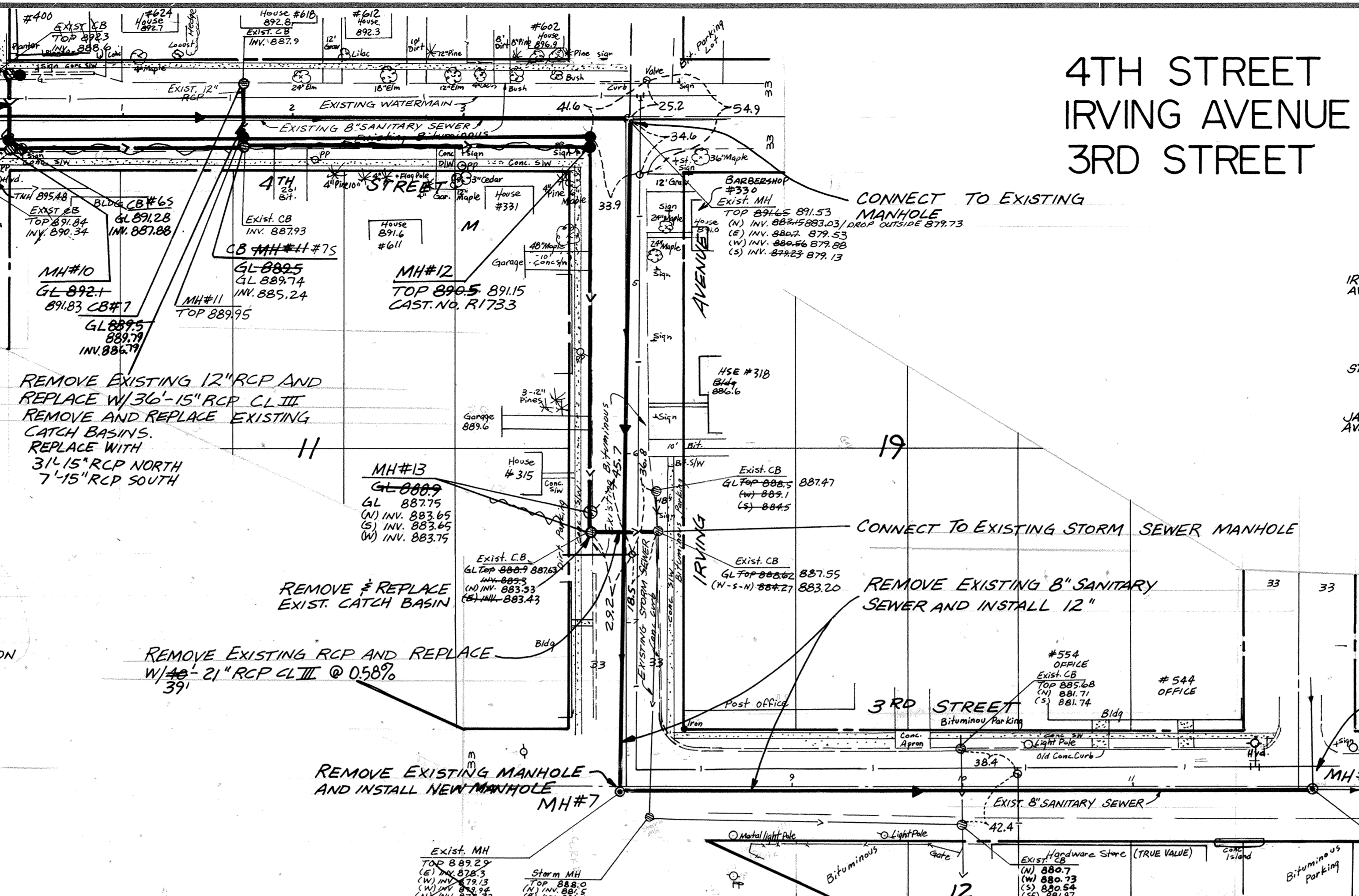
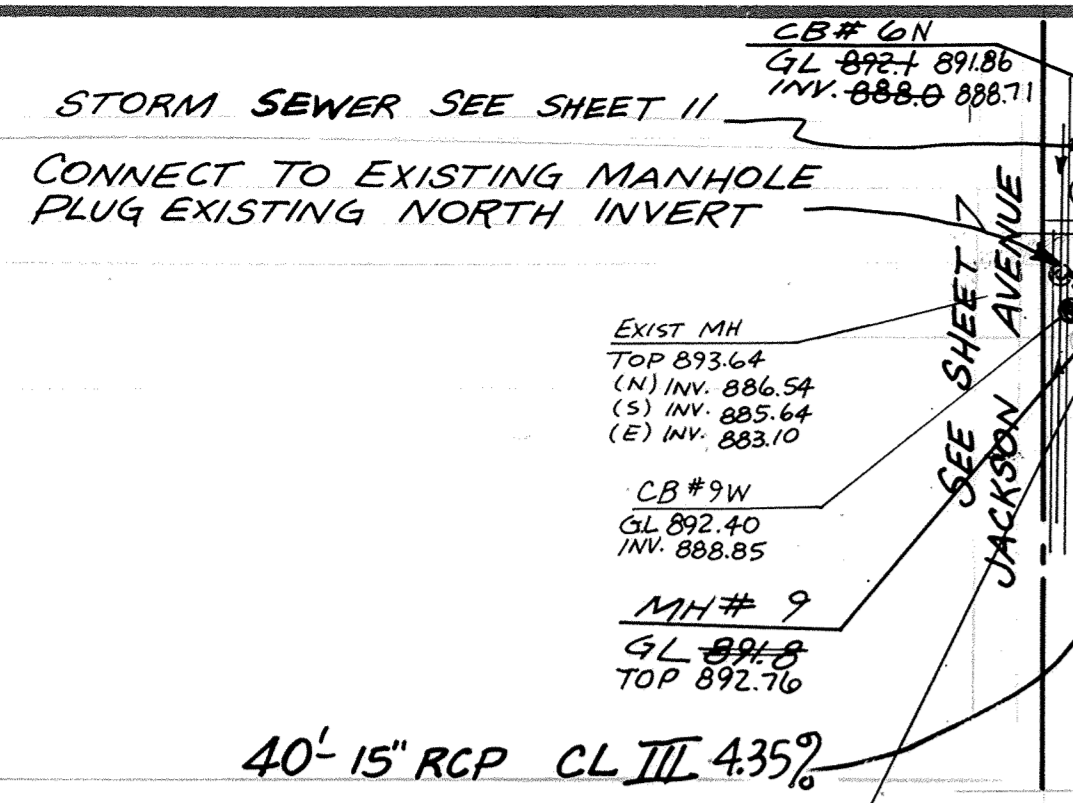


4TH STREET IRVING AVENUE 3RD STREET

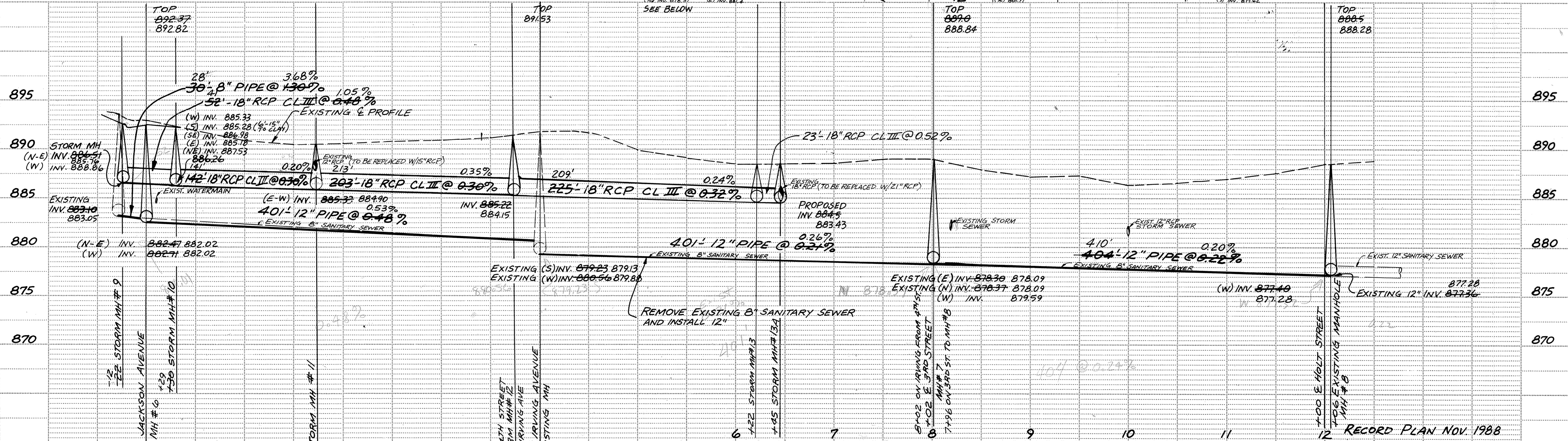


ADDRESS	CURB BOX TIES
IRVING AVENUE 330	13.4' NW HOUSE, 9.1' SW HOUSE/PORCH CENTRAL, IN SDWK.
IRVING AVENUE 331	15.1' NW HOUSE, 26.3' NE HOUSE OFF 4TH STREET
IRVING AVENUE 315	23.8' NE HOUSE, 21.5' SE HOUSE
IRVING AVENUE 318	31.0' NW HOUSE, 37.2' SW HOUSE, IN SDWK.
4TH STREET 602	25.2' SW HOUSE, 19.1' SE HOUSE
4TH STREET 611	36.8' NW HOUSE, 30.2' NE HOUSE
4TH STREET 612	29.5' SW HOUSE, 17.9' SE HOUSE
4TH STREET 618	21.6' SW HOUSE, 30.1' SE HOUSE CENTRAL
4TH STREET 624	27.2' SW HOUSE, 32.5' SE HOUSE
JACKSON AVENUE 370/372	22.3' NW HOUSE, 48.2' NE HOUSE OFF 4TH ST.
JACKSON AVENUE 400	16.6' SW/BLDG/PLANTER 34.6' SE BLDG CURB BOX INSIDE GATE VALVE BOX IN 4TH ST.



NOTE: RESTORATION FULL WIDTH ON 4TH STREET AND IRVING AVENUE. 20' ON 4TH, 5TH, 6TH & 8TH STREET 25' ON 3RD STREET

STREET RESTORATION DETAIL



	CONSULTING ENGINEERS	DATE	DESCRIPTION	DESIGNED	CITY OF ELK RIVER SAP SANITARY SEWER & STORM SEWER 4TH STREET ~ IRVING AVENUE ~ 3RD AVENUE DATE <u>SEPT 1987</u> SHEET <u>8</u> OF <u>28</u> SHEETS PROJECT NO. <u>230-032</u>
	1959 SLOAN PLACE (612)774-6021 ST. PAUL, MINNESOTA 55117	REVISIONS		CHECKED DRAWN GRAPHIC SCALE 0' HORIZ. 50' 0' VERT. 5'	