

PLAN SYMBOLS

SECTION LINE	-----
QUARTER LINE	- - - - -
SIXTEENTH LINE	-----
RIGHT OF WAY LINE	-----
PROPERTY LINE	-----
CENTER LINE	-----
FENCE LINE	- x - x -
RIVER OR CREEK	~~~~~
LAKE OR POND	~~~~~
CULVERT	-----
BRIDGE	-----
RETAINING WALL	=====

TREES	
BRUSH OR SHRUBS	
HEDGE	
CONIFERS	
SWAMP	
MAILBOX	□
SIGN	+

UTILITIES SYMBOLS

SANITARY SEWER	
STORM SEWER	
WATERMAIN	
GAS LINE	
POWER LINE	
MANHOLE	⊙
CATCH BASIN	⊕
VALVE	⊖

HYDRANT	
POWER, TELEPHONE, OR LIGHT POLE	
ANCHOR	
SOIL BORING LOCATION	⊕

ADT CURRENT YEAR 4300 (1986)
 ADT FUTURE YEAR 6450 (2006)
 HCA DT
 DESIGN SPEED 40 MPH STOP CONDITION AT SCHOOL STREET
 LOCALLY RESTRICTED TO 30 MPH STOP CONDITION AT TH 169
 SOIL TYPE (SUBGRADE) A-2
 SOIL FACTOR 50%
 STRUCTURAL DESIGN 9 TON

STOPPING SIGHT DISTANCE BASED ON:
 3.5' HEIGHT OF EYE
 0.5' HEIGHT OF OBJECT

SPECIFICATION
 The Minnesota Department of Transportation "Standard Specifications for Construction", 1983 Edition, shall govern except as modified or altered by the special provisions.

CITY OF ELK RIVER
 SECTIONS 27 & 34, T33N, R26W
 SANITARY SEWER, WATERMAIN,
 STORM DRAINAGE & STREET CONSTRUCTION,
 R/W ACQUISITION—JACKSON AVENUE

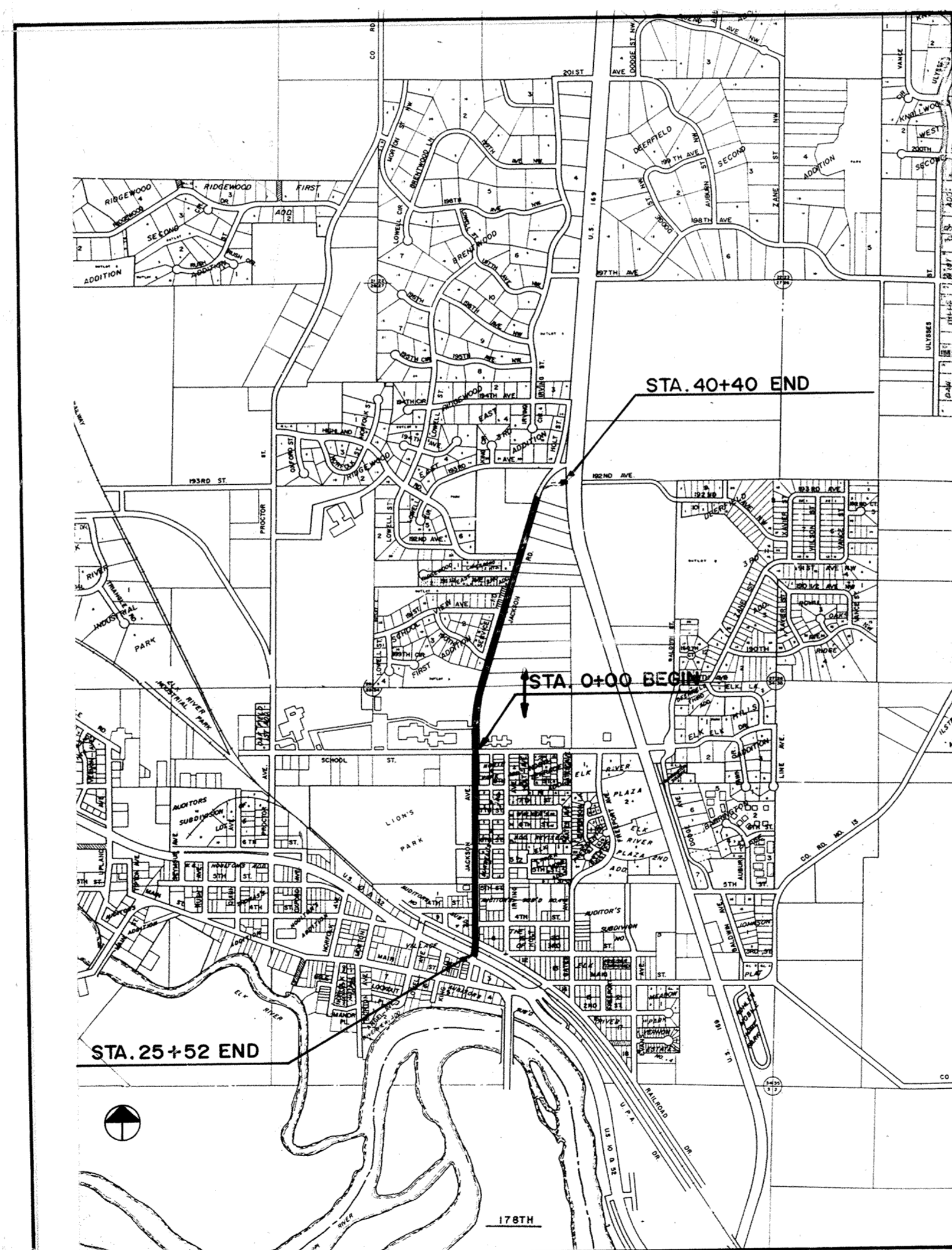
M.S.A.S. 204-104-01 MTB

BETWEEN U.S. HIGHWAY 10 AND U.S. HIGHWAY 169				
GROSS LENGTH	6592	FEET	1.25	MILES
BRIDGES LENGTH	0	FEET	0	MILES
EXCEPTION LENGTH	0	FEET	0	MILES
NET LENGTH	6592	FEET	1.25	MILES

PLAN 1" = 50'
 SCALES: PROFILE HOR. 1" = 50'
 VERT. 1" = 5'
 CROSS SECTIONS HOR. 1" = 10'
 VERT. 1" = 5'

INDEX OF SHEETS

- 1 TITLE SHEET & LAYOUT MAP
- 2 EST. QUANTITY, STREET SECTIONS & NOTES
- 3 LOCATION MAP
- 4-8 SANITARY SEWER
- 9-17 STORM SEWER & STREET
- 18-24 CROSS SECTIONS
- 25-28 STANDARD DETAILS



I HEREBY CERTIFY THAT THIS PLAN, SPECIFICATION, OR REPORT WAS PREPARED BY ME OR UNDER MY DIRECT SUPERVISION AND THAT I AM A DULY REGISTERED PROFESSIONAL ENGINEER UNDER THE LAWS OF THE STATE OF MINNESOTA.

Terry J. Maurer
 DATE 11/4/87 REG. NO. 15316

REVISED INTERSECTION LAYOUT ON SHEETS 15, 16, & 17. ADDED CROSS-SHEET 24A OF 28.

APPROVED BY *TJM* DATE 5/23/88
 APPROVED BY *OS* DATE 7/17/88
 APPROVED BY *OS* DATE 7/12/88
 APPROVED BY _____ DATE _____

APPROVED *Terry J. Maurer* CITY ENGINEER 11/4/87 DATE
 RECOMMENDED FOR APPROVAL *D. J. Reed* DISTRICT STATE AID ENGINEER 11-10-87 DATE
 RECOMMENDED FOR APPROVAL *Julia Skallman* STATE PLANS & SPEC. ENGINEER 12/22/87 DATE
 APPROVED 12/22 1987 *William M. Gray* STATE AID DIRECTOR 7/12/88 DATE

Jackson Ave
 1988
 Pgs 197-225

SHEET 1 OF 28

1988
 MTB

DRAWING NUMBER JACKS 87 1988 MTB