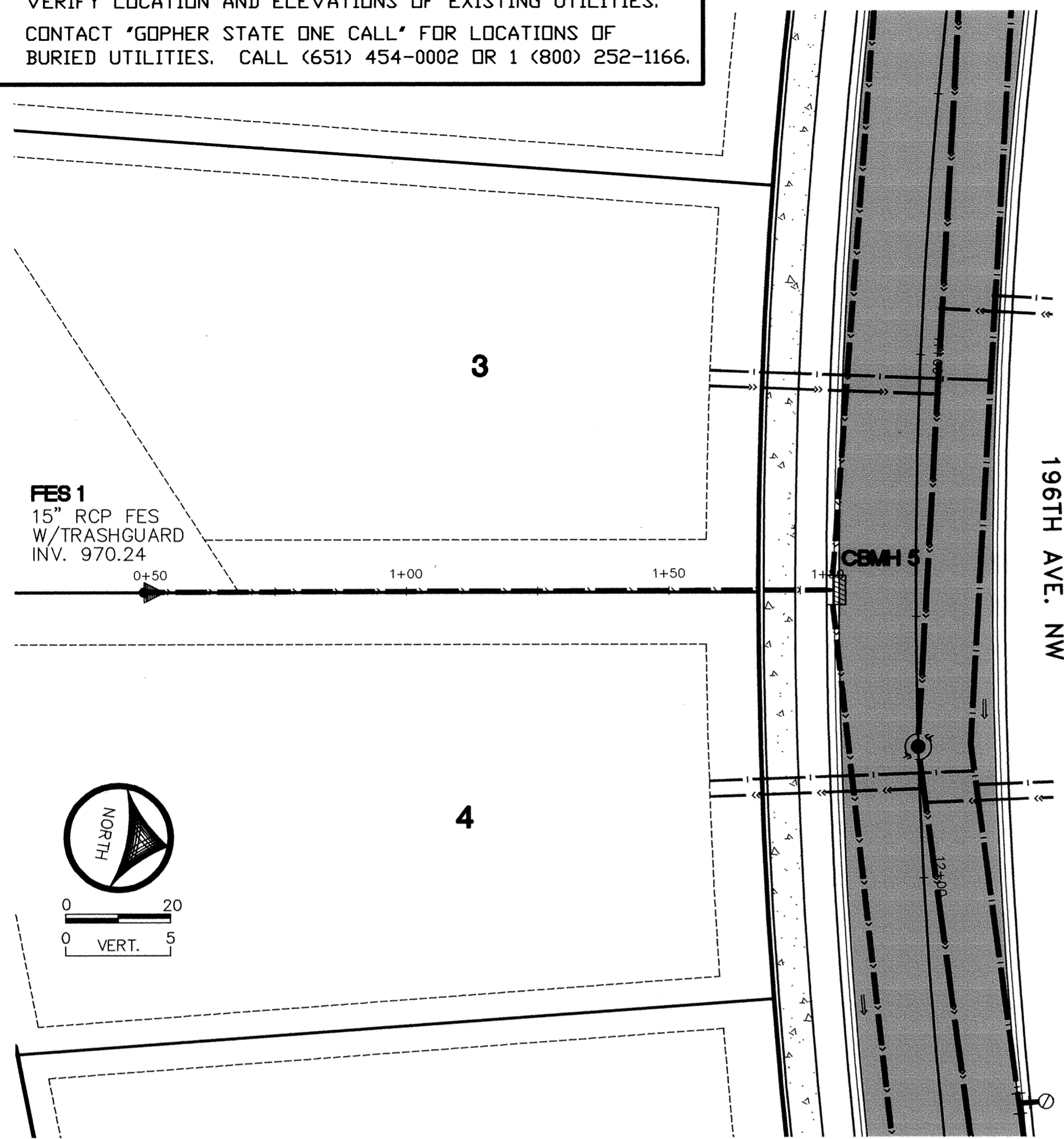
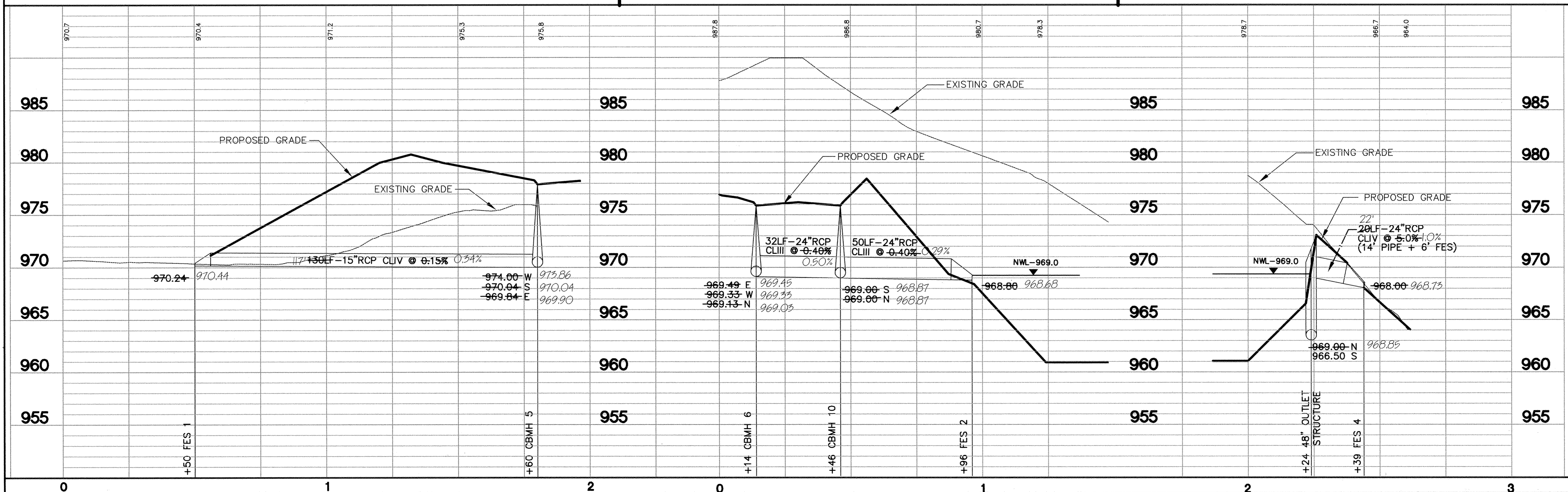
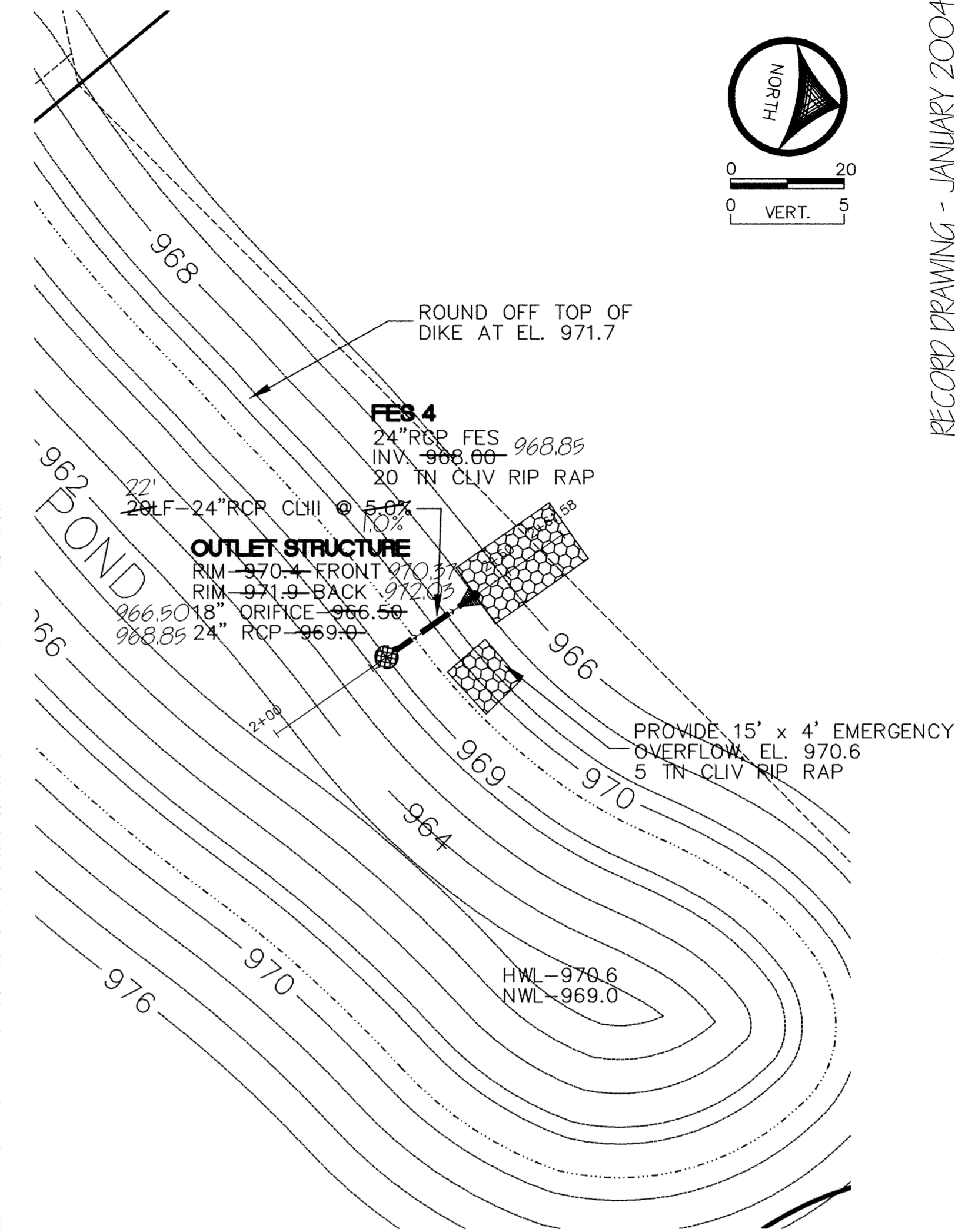
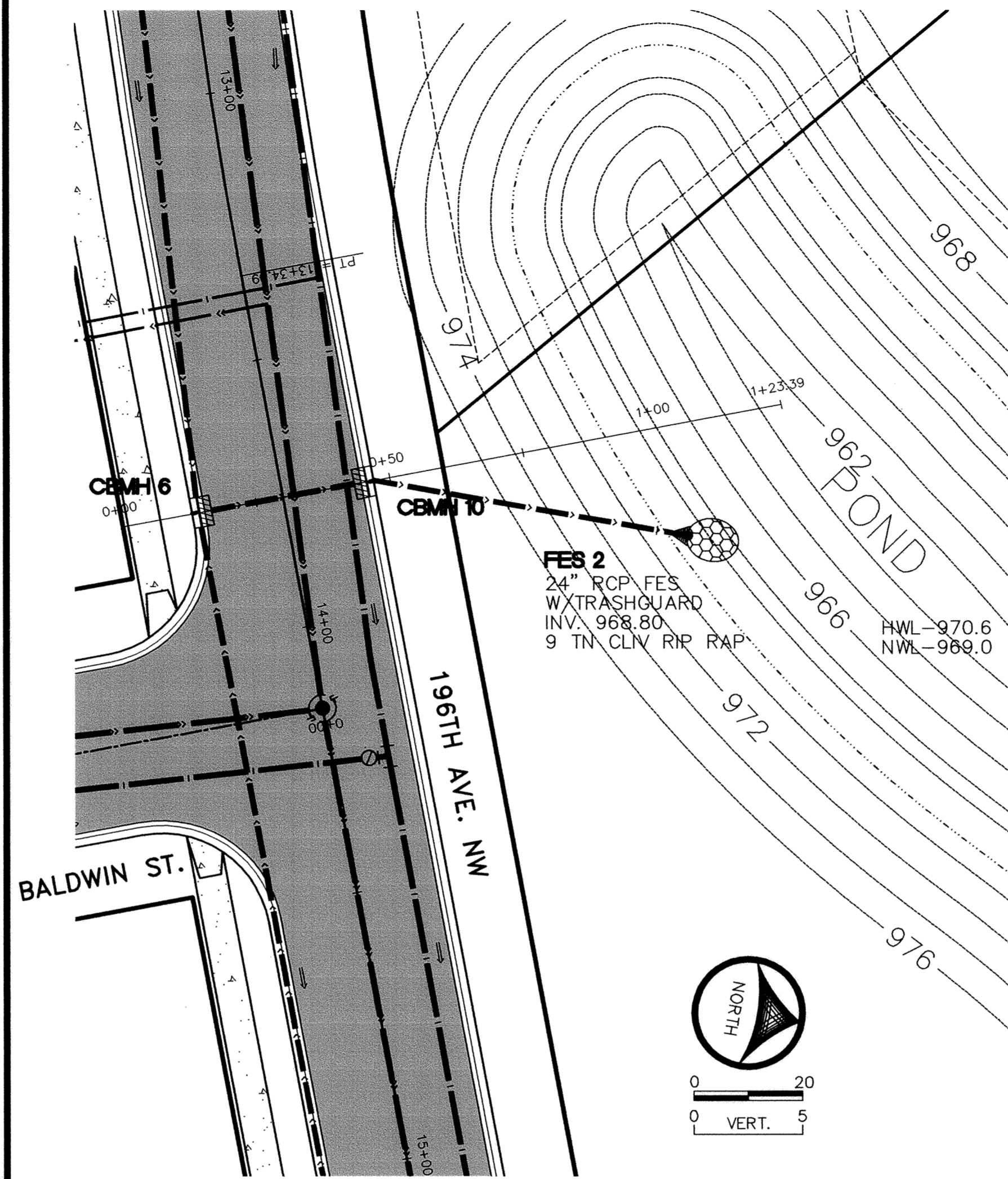


- NOTES:**
1. VERIFY LOCATION AND ELEVATIONS OF EXISTING UTILITIES.
 2. CONTACT "GOPHER STATE ONE CALL" FOR LOCATIONS OF BURIED UTILITIES. CALL (651) 454-0002 OR 1 (800) 252-1166.



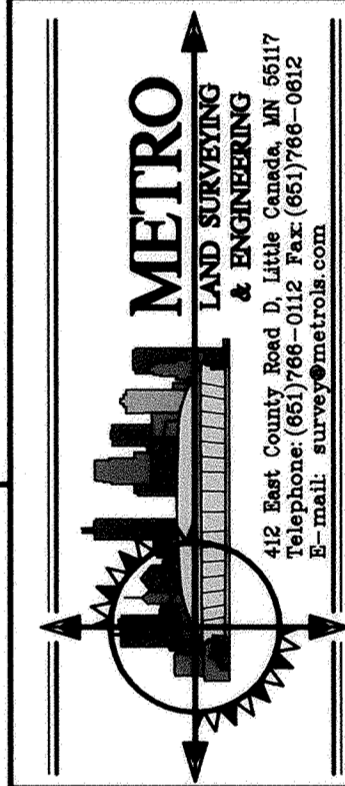
STORM SEWER



RECORD DRAWING - JANUARY 2004

DATE	MBW
7/26/04	
SCALE	PROJECT
1"=20'	R0101.001
CHECKED	APPROVED

OWNER/DEVELOPER
RIVERSIDE COMPANIES
 19230 EVANS STREET, SUITE 115
 ELK RIVER, MINNESOTA
 PHONE: 763-241-1801



PROFESSIONAL ENGINEER UNDER THE LAWS OF THE STATE OF MINNESOTA.
 JOHN C. JOHNSON
 LICENSE NO. 11546
 DATE 3/21/05

DATE	REVISIONS
6/28/03	PER CITY REVIEW
7/10/03	POND OUTLETS
7/30/03	POND OUTLETS

U7