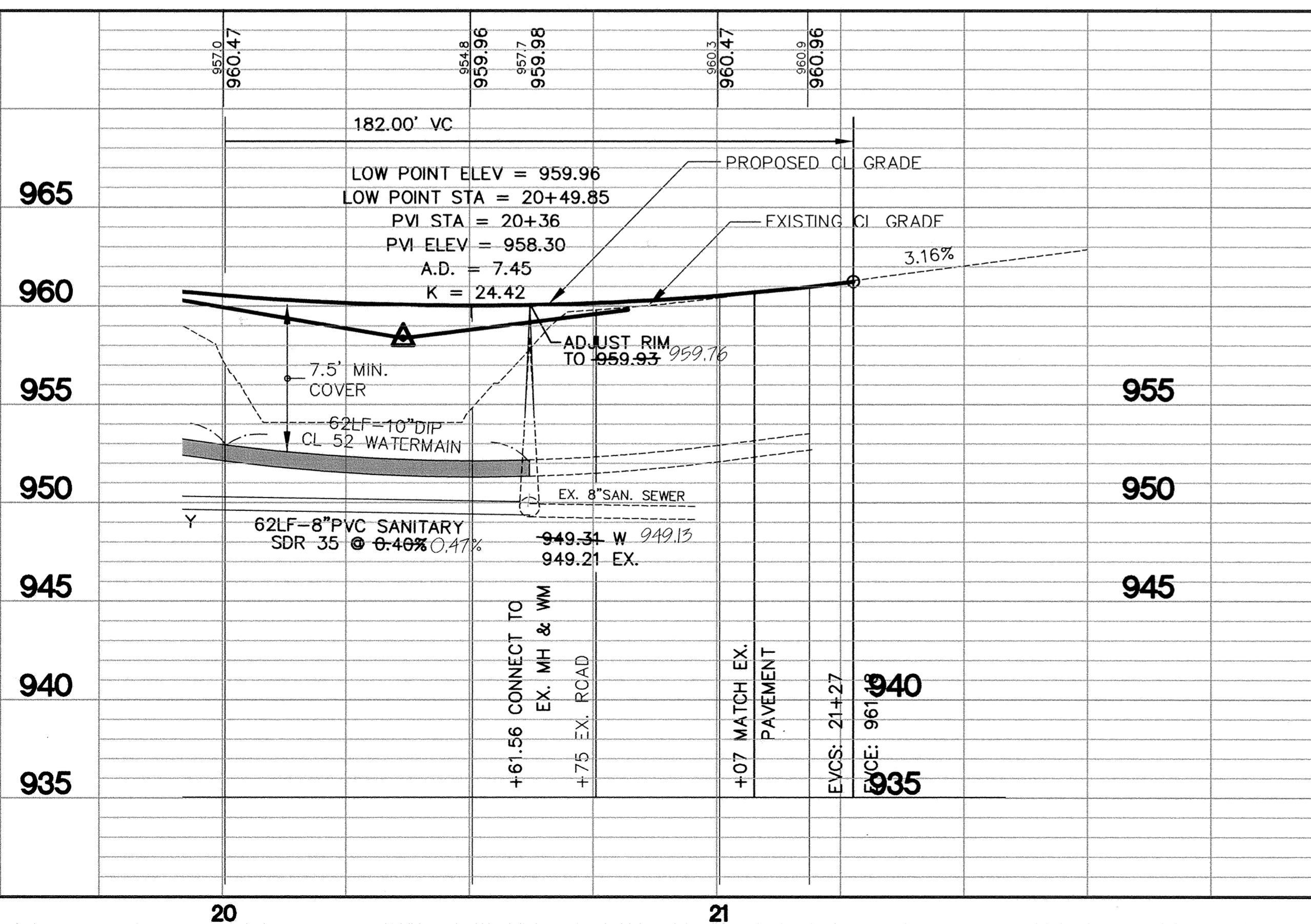
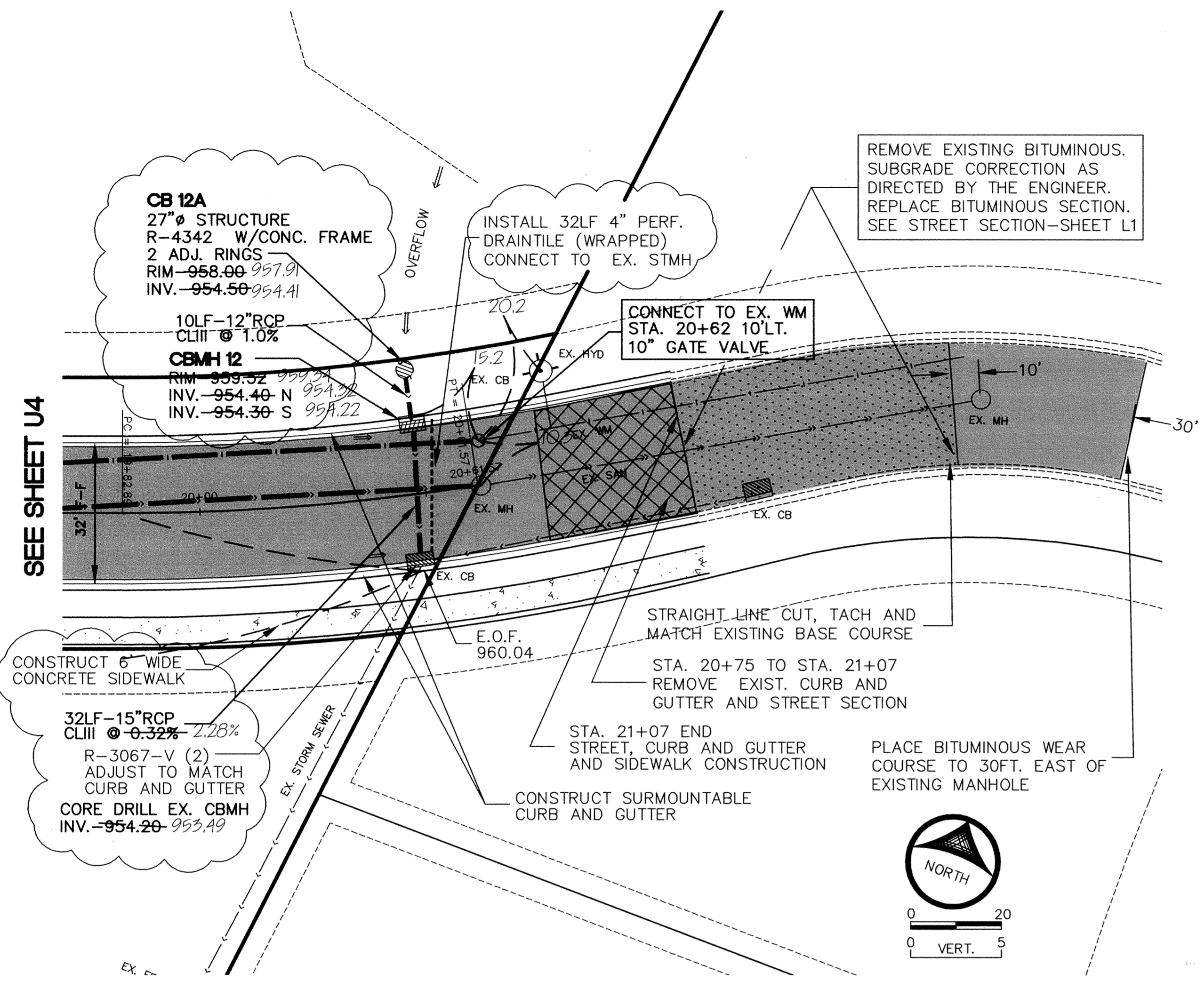
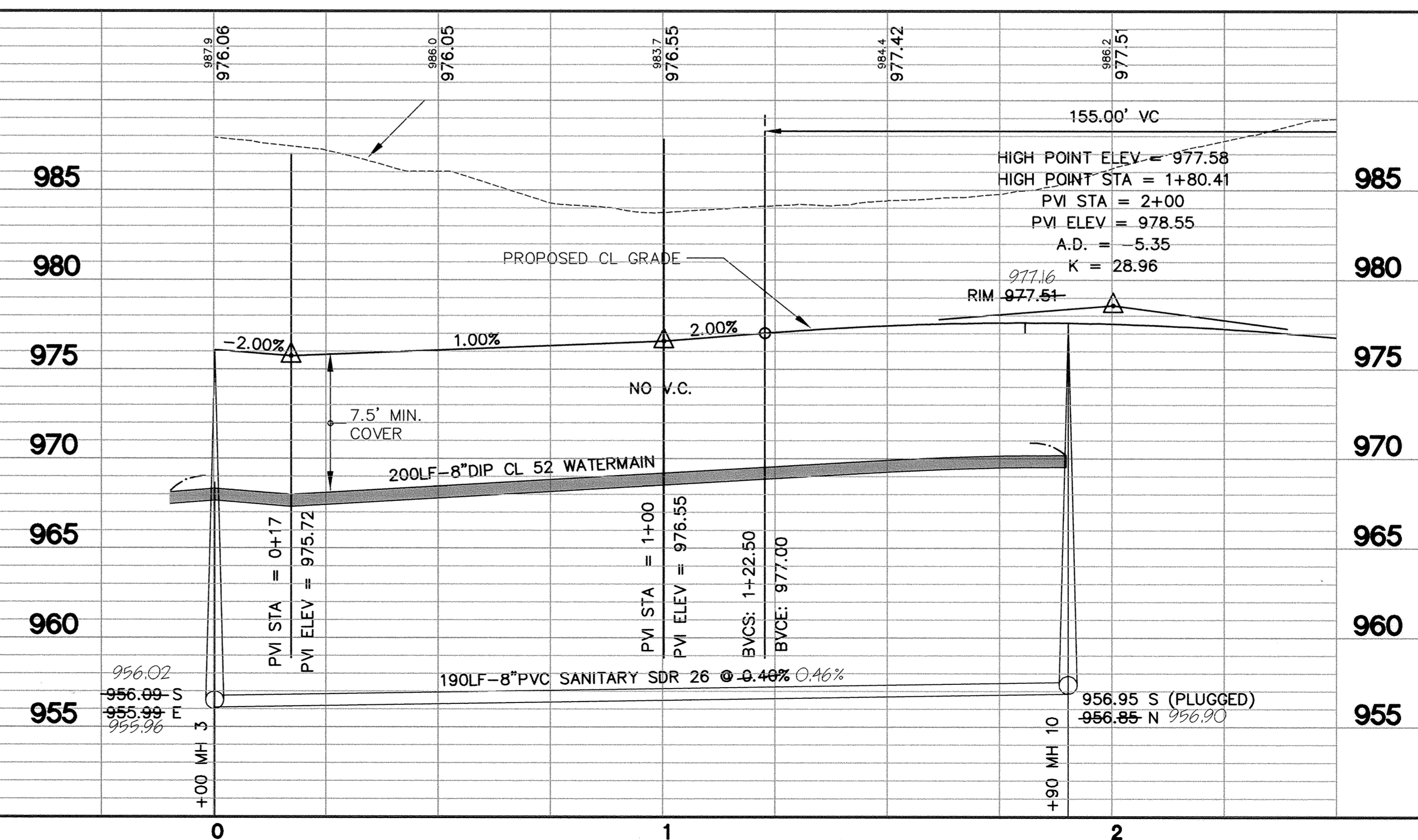
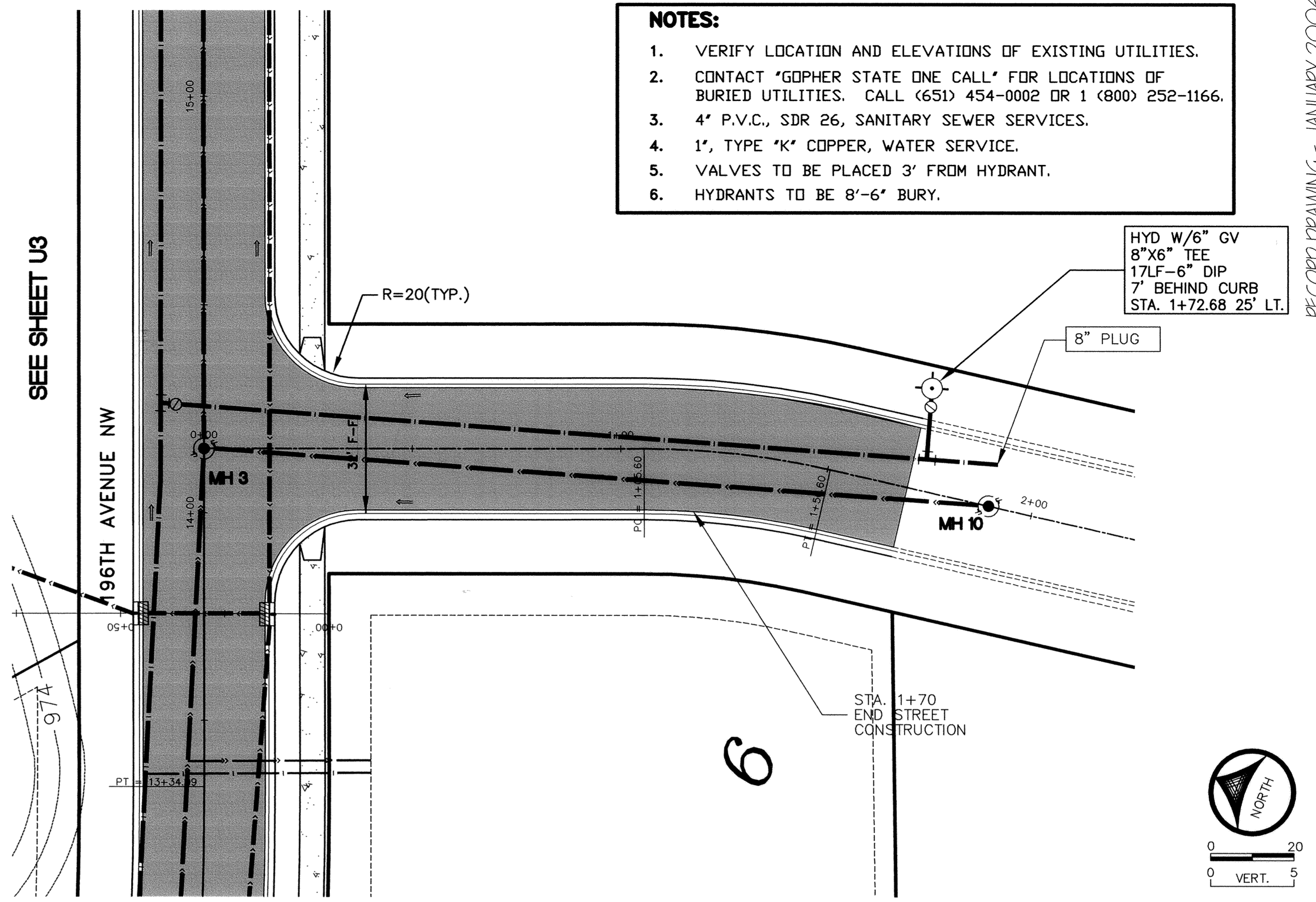


196TH LANE NW



BALDWIN AVENUE



- NOTES:**
1. VERIFY LOCATION AND ELEVATIONS OF EXISTING UTILITIES.
 2. CONTACT 'GOPHER STATE ONE CALL' FOR LOCATIONS OF BURIED UTILITIES. CALL (651) 454-0002 OR 1 (800) 252-1166.
 3. 4' P.V.C., SDR 26, SANITARY SEWER SERVICES.
 4. 1", TYPE 'K' COPPER, WATER SERVICE.
 5. VALVES TO BE PLACED 3' FROM HYDRANT.
 6. HYDRANTS TO BE 8'-6" BURY.

RECORD DRAWING - JANUARY 2004

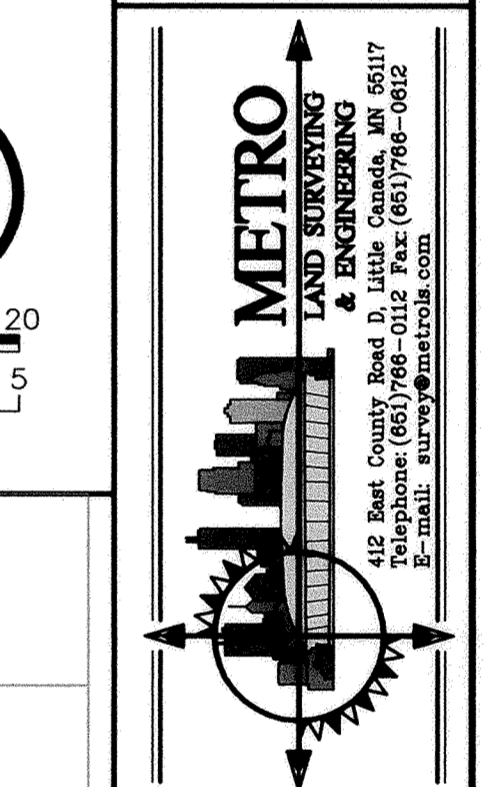
SANITARY SEWER, WATERMAIN, STORM SEWER AND STREET CONSTRUCTION

HILLSIDE ESTATES 9TH ADDITION

196TH LANE NW
STA. 0+00 TO 5+00
CITY OF ELK RIVER, MINNESOTA

OWNER/DEVELOPER

RIVERSIDE COMPANIES
19230 EVANS STREET, SUITE 115
ELK RIVER, MINNESOTA
PHONE: 763-241-1801



HEREBY CERTIFY THAT THIS IS A TRUE AND CORRECT REPORT PREPARED BY ME OR UNDER MY DIRECT SUPERVISION AND THAT I AM A DULY LICENSED PROFESSIONAL ENGINEER UNDER THE LAWS OF THE STATE OF MINNESOTA.

John C. Johnson
JOHN C. JOHNSON
DATE: 3/21/05 LICENSE NO. 115146

DATE	DESCRIPTION
6/25/03	PER CITY REVIEW
7/1/03	10' W.M., BIT. REM. AND OVERLAY
7/23/03	CB12A, 4" DRAIN TILE, (CLOUDED)

U5