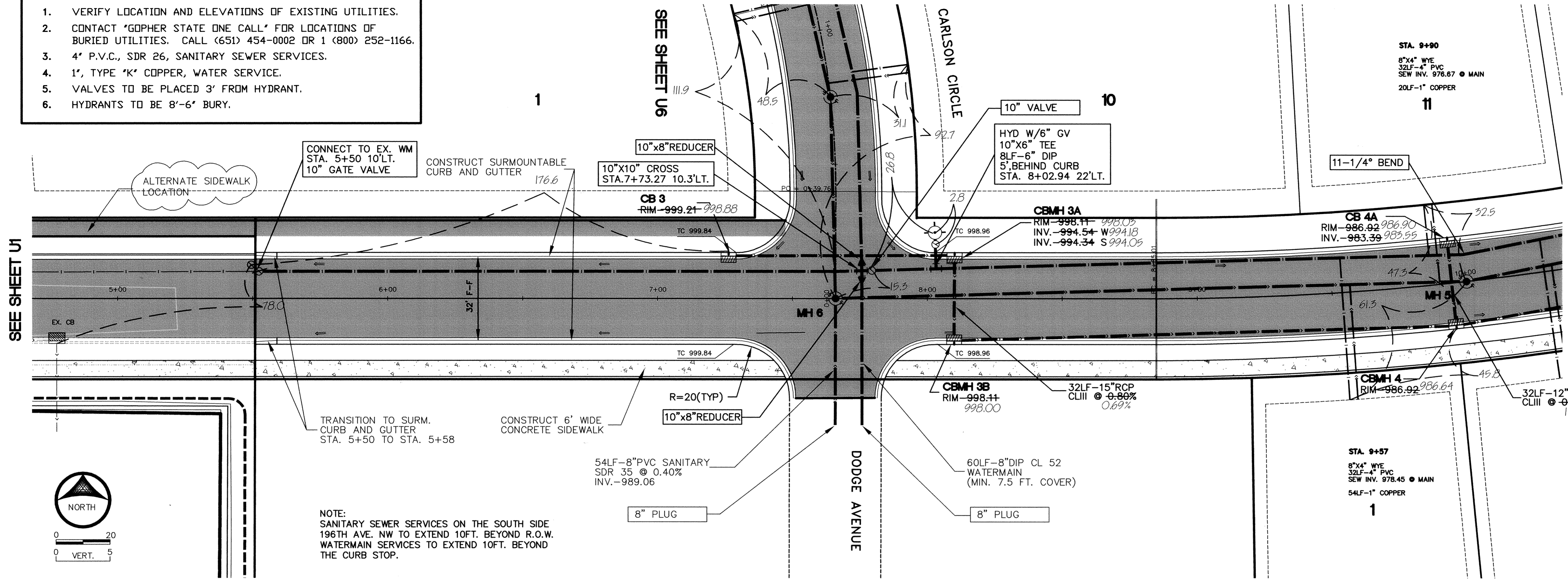


- NOTES:**
1. VERIFY LOCATION AND ELEVATIONS OF EXISTING UTILITIES.
 2. CONTACT "GOPHER STATE ONE CALL" FOR LOCATIONS OF BURIED UTILITIES. CALL (651) 454-0002 OR 1 (800) 252-1166.
 3. 4" P.V.C., SDR 26, SANITARY SEWER SERVICES.
 4. 1", TYPE "K" COPPER, WATER SERVICE.
 5. VALVES TO BE PLACED 3' FROM HYDRANT.
 6. HYDRANTS TO BE 8'-6" BURY.

196TH LANE NW



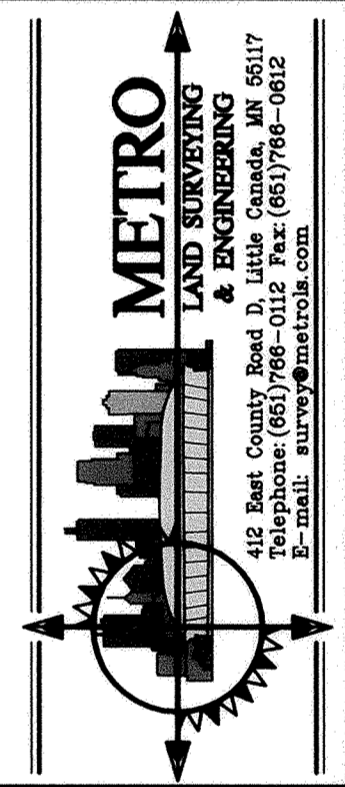
NOTE:
SANITARY SEWER SERVICES ON THE SOUTH SIDE
196TH AVE. NW TO EXTEND 10FT. BEYOND R.O.W.
WATERMAIN SERVICES TO EXTEND 10FT. BEYOND
THE CURB STOP.

DATE: 1/26/04
SCALE: 1"=50'
PROJECT: 101.001
CHECKED: APPROVED

RECORD DRAWING - JANUARY 2004

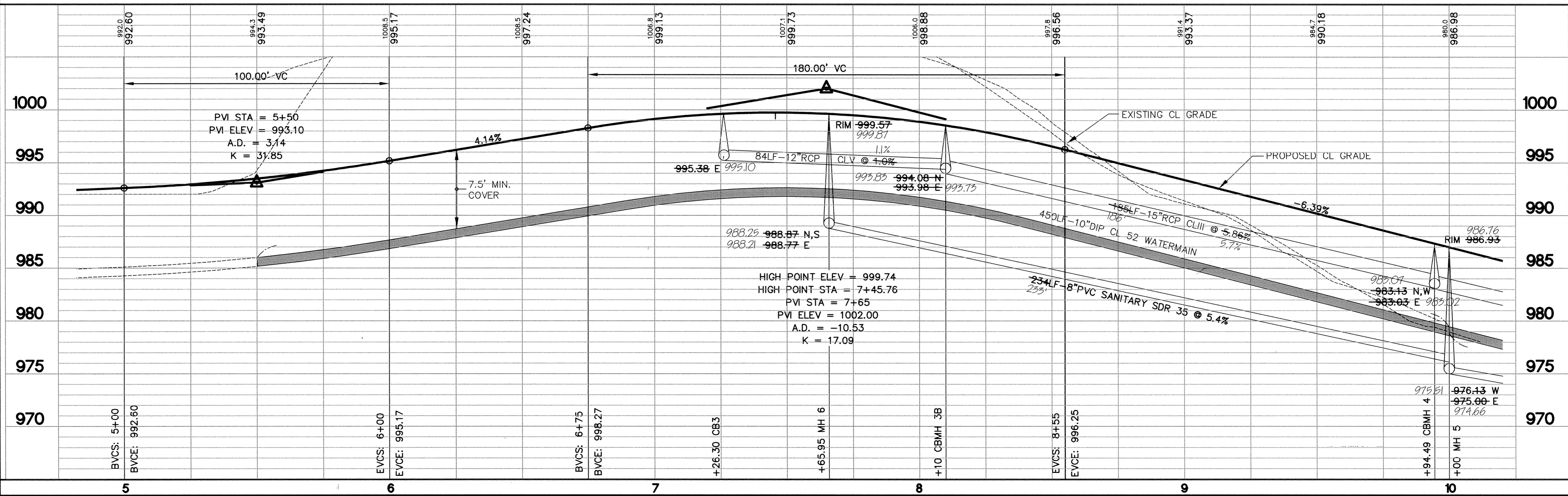
SANITARY SEWER, WATERMAIN, STORM SEWER AND STREET CONSTRUCTION HILLSIDE ESTATES 9TH ADDITION 196TH LANE NW STA. 0+00 TO 5+00
CITY OF ELK RIVER, MINNESOTA

OWNER/DEVELOPER
RIVERSIDE COMPANIES
19230 EVANS STREET, SUITE 115
ELK RIVER, MINNESOTA
PHONE: 763-241-1801



I HEREBY CERTIFY THAT THIS PLAN, SPECIFICATION, OR REPORT WAS PREPARED BY ME OR UNDER MY DIRECT SUPERVISION AND THAT I AM A LICENSED PROFESSIONAL ENGINEER UNDER THE LAWS OF THE STATE OF MINNESOTA.

John C. Johnson
JOHN C. JOHNSON
DATE: 3/21/05 LICENSE NO. 11546



DATE	REVISIONS
6/28/03	PER CITY REVIEW
7/1/03	10' VAL AND MISC.
7/10/03	MISC. LABELS

BY: [Signature]
PK: [Signature]
PK: [Signature]

DATE: 3/21/05

U2