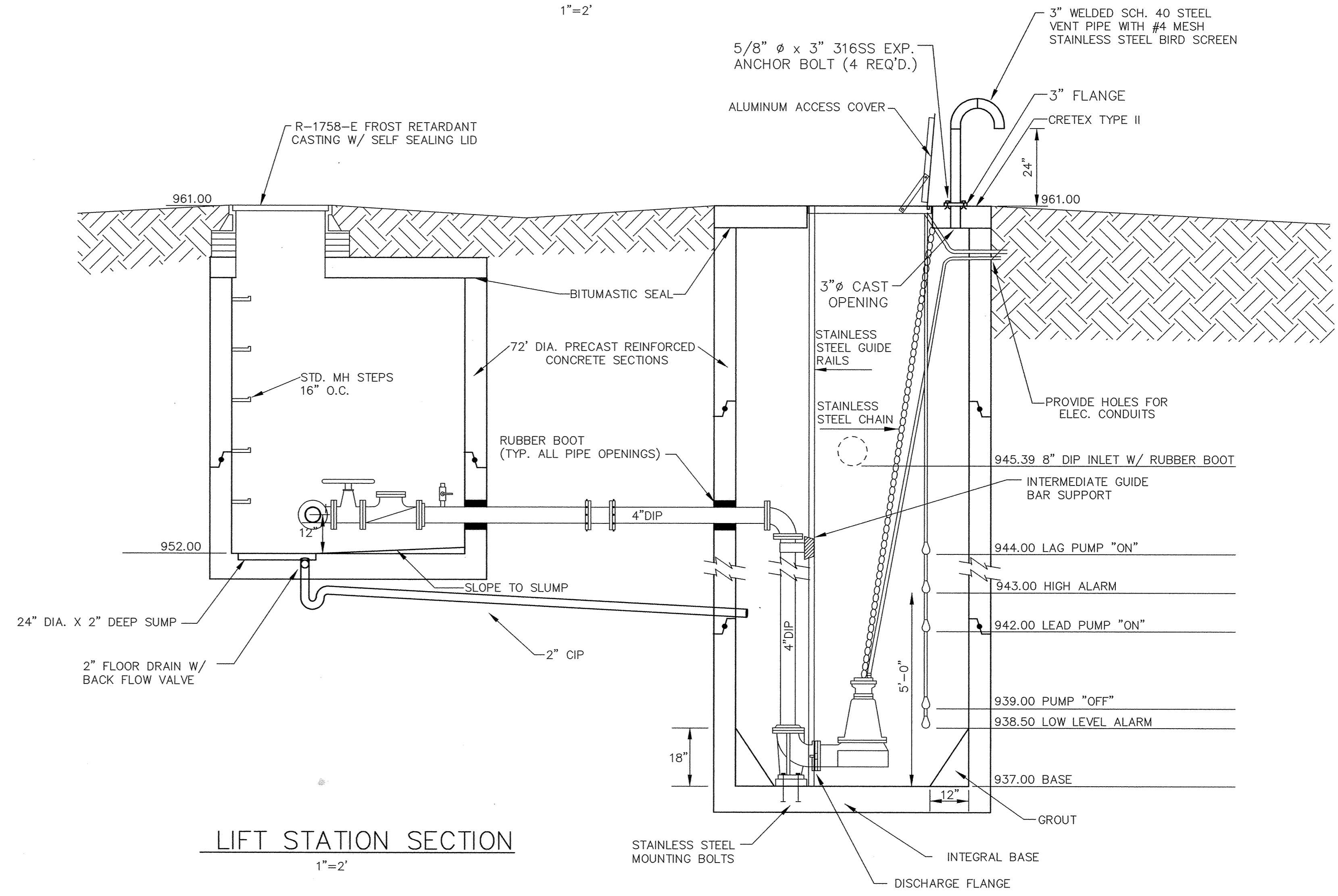


LIFT STATION PLAN
1"=2'



LIFT STATION SECTION
1"=2'

I HEREBY CERTIFY THAT THIS PLAN, SPECIFICATION, OR REPORT WAS PREPARED BY ME OR UNDER MY DIRECT SUPERVISION AND THAT I AM A DULY REGISTERED PROFESSIONAL ENGINEER UNDER THE LAWS OF THE STATE OF MINNESOTA.
Gregory J. Mauer
DATE 8/20/96 REG. NO. 15316



1326 ENERGY PARK DRIVE
ST. PAUL, MINNESOTA 55108
(612) 644-4389

DATE	DESCRIPTION	DESIGNED	SEF
		CHECKED	
		DRAWN	RKM
		GRAPHIC SCALE	
		0 VERT.	

CITY OF ELK RIVER
HILLSIDE 5TH ADDITION
LIFT STATION
DATE JULY 1996 SHEET 11 OF 16 SHEETS PROJECT NO. 230-292