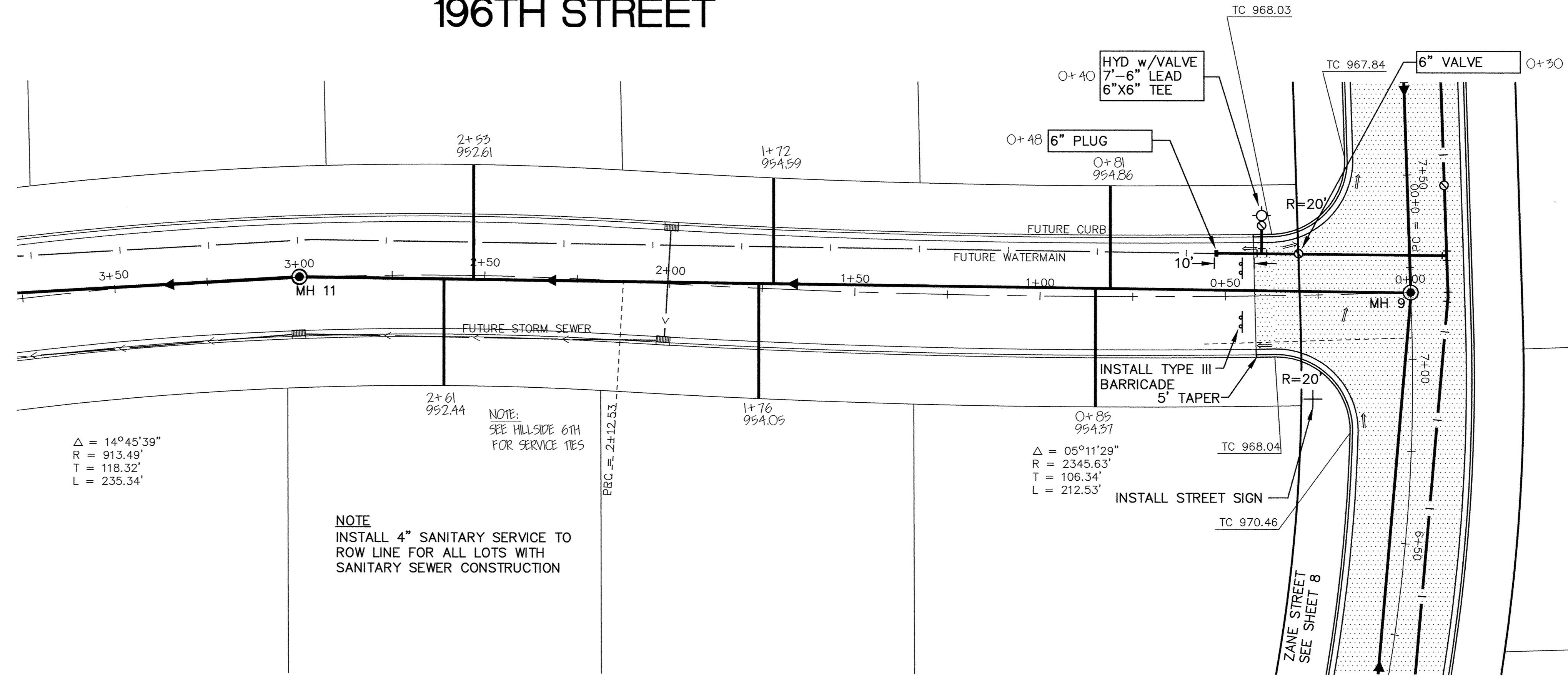


# 196TH STREET



$\Delta = 14^\circ 45' 39''$   
 $R = 913.49'$   
 $T = 118.32'$   
 $L = 235.34'$

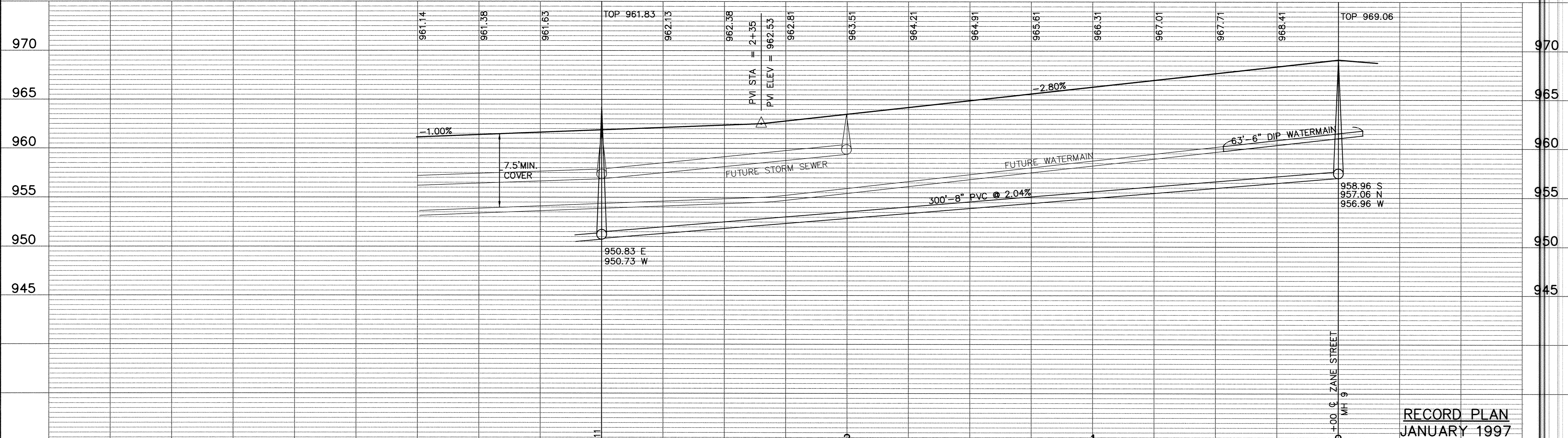
NOTE:  
 INSTALL 4" SANITARY SERVICE TO  
 ROW LINE FOR ALL LOTS WITH  
 SANITARY SEWER CONSTRUCTION

NOTE:  
 SEE HILLSIDE 6TH  
 FOR SERVICE TIES

$\Delta = 05^\circ 11' 29''$   
 $R = 2345.63'$   
 $T = 106.34'$   
 $L = 212.53'$

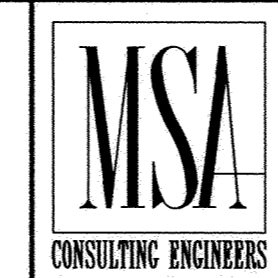
INSTALL TYPE III  
 BARRICADE  
 5' TAPER

INSTALL STREET SIGN



**RECORD PLAN**  
**JANUARY 1997**

I HEREBY CERTIFY THAT THIS PLAN, SPECIFICATION,  
 OR REPORT WAS PREPARED BY ME OR UNDER MY DIRECT  
 SUPERVISION AND THAT I AM A DULY REGISTERED  
 PROFESSIONAL ENGINEER UNDER THE LAWS OF THE  
 STATE OF MINNESOTA.  
 DATE 8/21/96 REG. NO. 15316



1326 ENERGY PARK DRIVE  
 ST. PAUL, MINNESOTA 55108  
 (612) 644-4389

DATE	DESCRIPTION	DESIGNED	CHKD
9/13/96	REVISE SANITARY SEWER		
9/11/96	DELETE STORM SEWER		

CHECKED	SEF
DRAWN	RKM

GRAPHIC SCALE  
 0 20  
 0 VERT. 5

CITY OF ELK RIVER  
 SANITARY SEWER, WATERMAIN, STREET & STORM SEWER  
 196TH STREET

0+00 TO 3+75

DATE JULY 1996 SHEET **9** OF **16** SHEETS PROJECT NO. 230-292