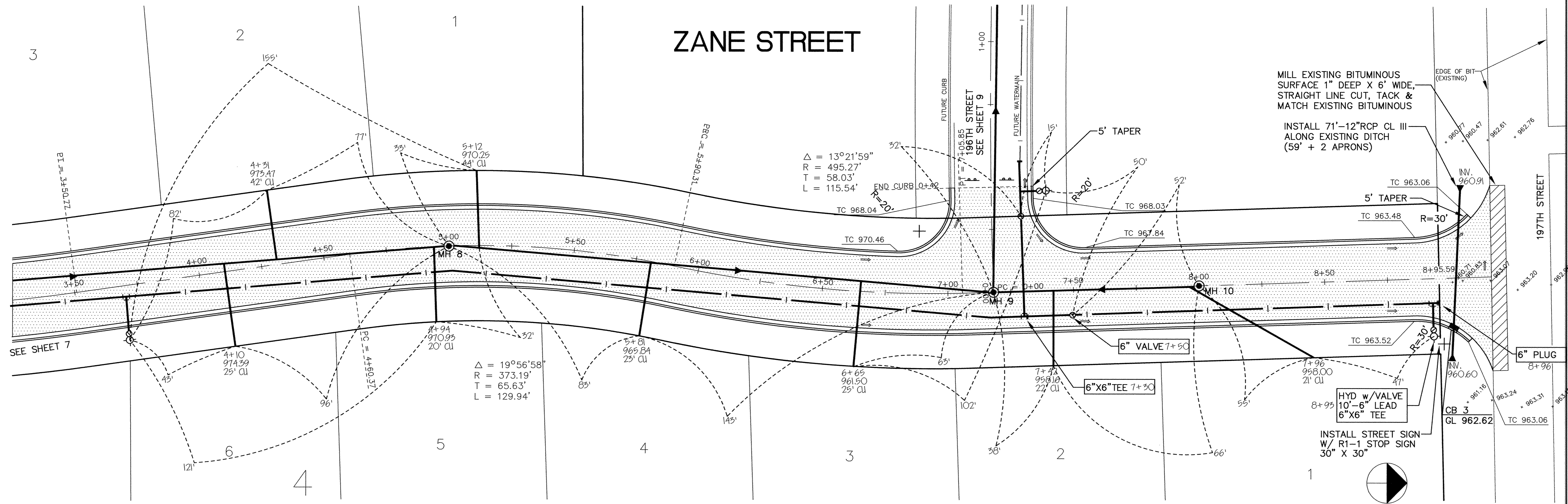
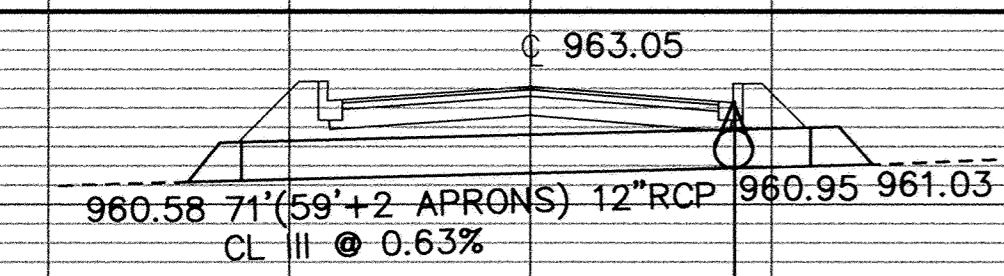
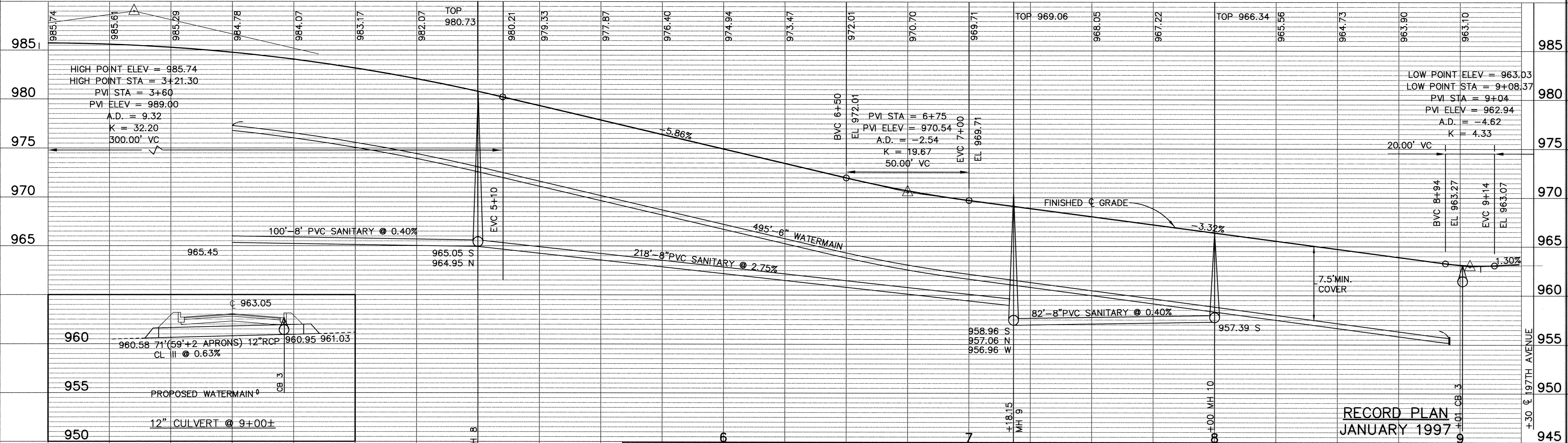
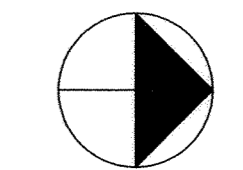


# ZANE STREET



MILL EXISTING BITUMINOUS SURFACE 1" DEEP X 6' WIDE, STRAIGHT LINE CUT, TACK & MATCH EXISTING BITUMINOUS

INSTALL 71"-12"RCP CL III ALONG EXISTING DITCH (59' + 2 APRONS)



RECORD PLAN  
JANUARY 1997

I HEREBY CERTIFY THAT THIS PLAN, SPECIFICATION, OR REPORT WAS PREPARED BY ME OR UNDER MY DIRECT SUPERVISION AND THAT I AM A DULY REGISTERED PROFESSIONAL ENGINEER UNDER THE LAWS OF THE STATE OF MINNESOTA.  
*Scott J. Mauer*  
DATE 2/21/96 REG. NO. 15316



1326 ENERGY PARK DRIVE  
ST. PAUL, MINNESOTA 55108  
(612) 644-4389

DATE	DESCRIPTION	DESIGNED	SEF
9/11/96	DELETE STORM SEWER	CHECKED	
9/13/96	REVISE SANITARY SEWER	DRAWN	RKM

GRAPHIC SCALE  
0 20  
VERT. 5

CITY OF ELK RIVER  
SANITARY SEWER, WATERMAIN, STREET & STORM SEWER  
ZANE STREET  
4+00 TO 9+24  
DATE JULY 1996 SHEET 8 OF 16 SHEETS PROJECT NO. 230-292