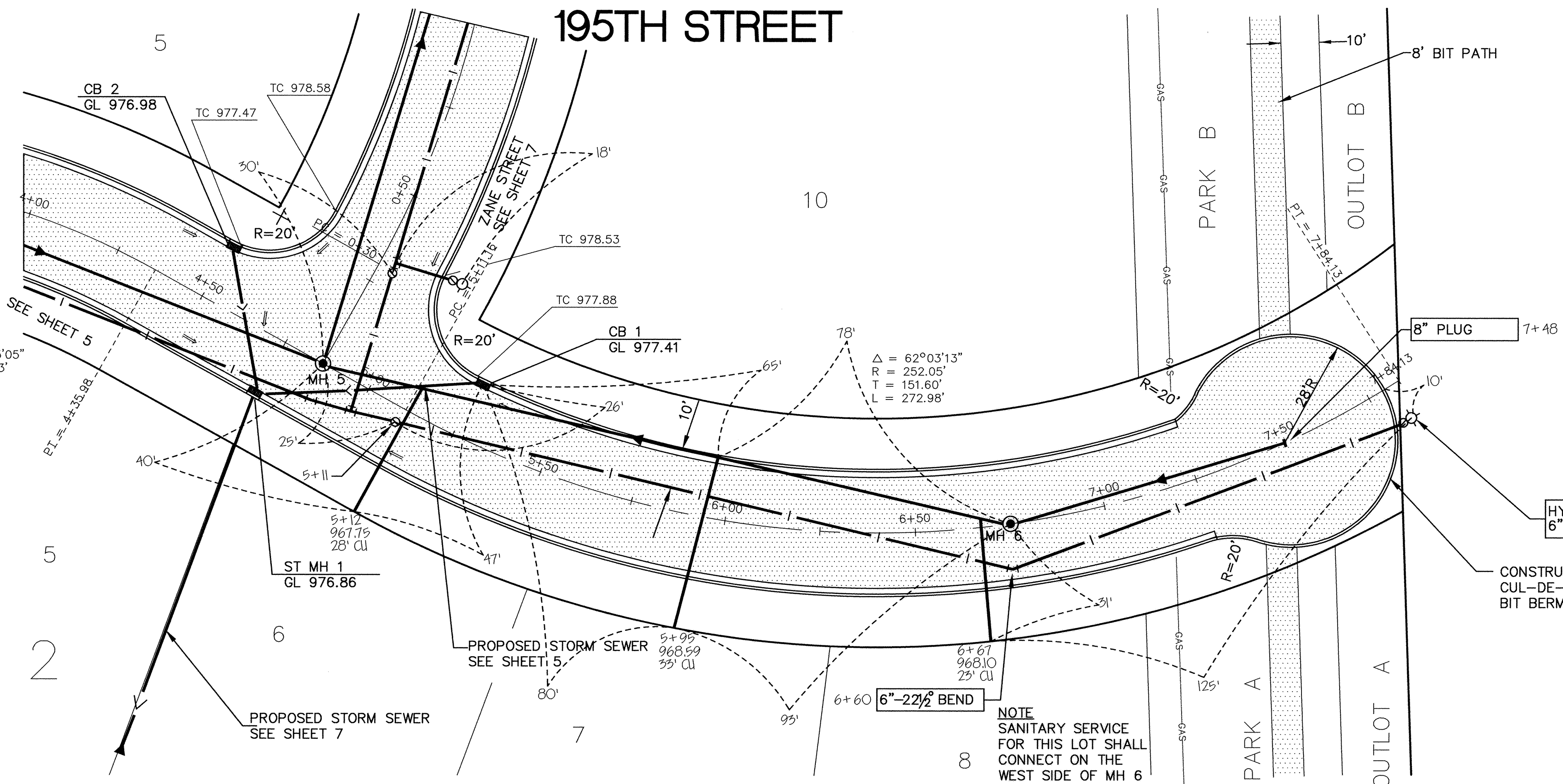


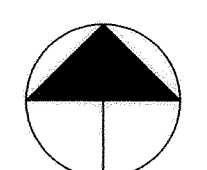
SAICO PRODUCTS • NEW HOPK, MINNESOTA
REORDER BY PART NUMBER 8250
SAICO PRODUCTS • NEW HOPK, MINNESOTA
REORDER BY PART NUMBER 8250
SAICO PRODUCTS • NEW HOPK, MINNESOTA
REORDER BY PART NUMBER 8250
SAICO PRODUCTS • NEW HOPK, MINNESOTA
REORDER BY PART NUMBER 8250



$\Delta = 11^\circ 05' 05''$
 $R = 194.63'$
 $T = 18.89'$
 $L = 37.65'$

$\Delta = 62^\circ 03' 13''$
 $R = 252.05'$
 $T = 151.60'$
 $L = 272.98'$

NOTE
 SANITARY SERVICE
 FOR THIS LOT SHALL
 CONNECT ON THE
 WEST SIDE OF MH 6



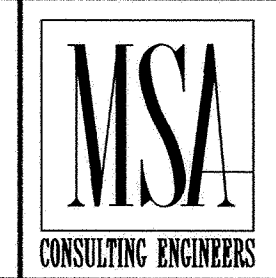
	977.77	977.64	977.51	977.43	977.40	TOP 977.38	977.75	977.94	978.39	978.84	979.28	979.74	980.02	980.13	TOP 980.40	980.76	981.07	981.38	981.69	982.00		
995																						995
990																						990
985																						985
980																						980
975																						975
970																						970
965																						965
960																						960

LOW POINT ELEV = 977.40
 LOW POINT STA = 4+76.16
 PVI STA = 4+90
 PVI ELEV = 977.30
 A.D. = -2.33
 K = 21.45
 50.00' VC

+86.24' ZANE STREET
 MH 5
 967.25' E
 967.25' W
 967.15' N

+75' MH 6
 968.09' E
 967.99' W

I HEREBY CERTIFY THAT THIS PLAN, SPECIFICATION,
 OR REPORT WAS PREPARED BY ME OR UNDER MY DIRECT
 SUPERVISION AND THAT I AM A DULY REGISTERED
 PROFESSIONAL ENGINEER UNDER THE LAWS OF THE
 STATE OF MINNESOTA.
 DATE 8/21/96 REG. NO. 15316



1326 ENERGY PARK DRIVE
 ST. PAUL, MINNESOTA 55108
 (612) 644-4389

REVISIONS	DATE	DESCRIPTION	DESIGNED	SEF

CHECKED	
DRAWN	RKM
GRAPHIC SCALE	
0	20
VERT.	5

CITY OF ELK RIVER
 SANITARY SEWER, WATERMAIN, STREET & STORM SEWER
 195TH STREET
 5+00 TO 7+85
 DATE JULY 1996 SHEET 6 OF 16 SHEETS PROJECT NO. 230-292

RECORD PLAN
 JANUARY 1997