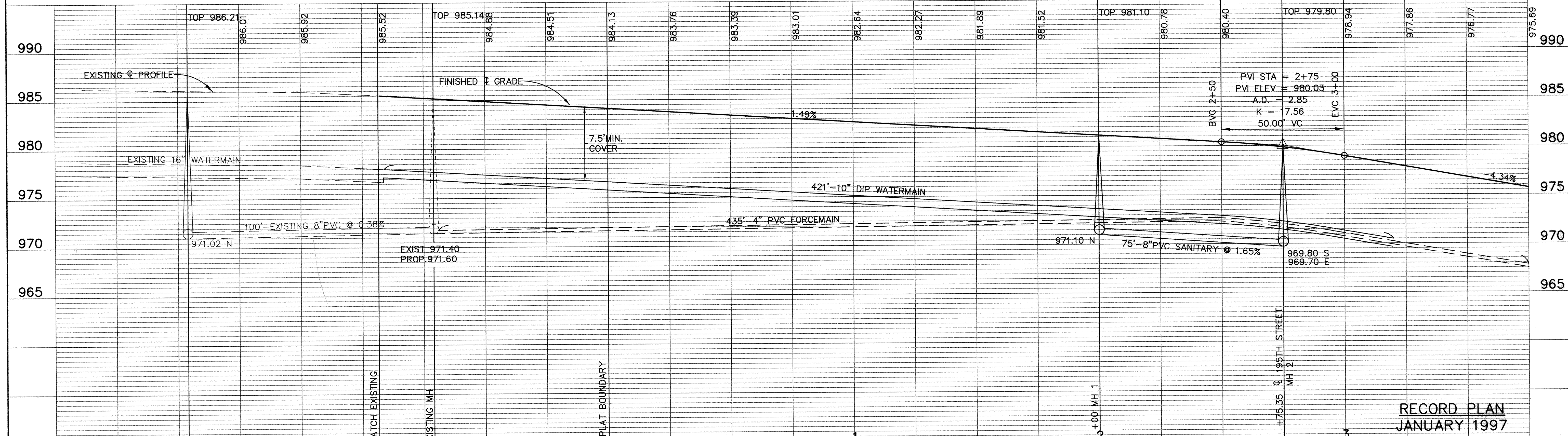
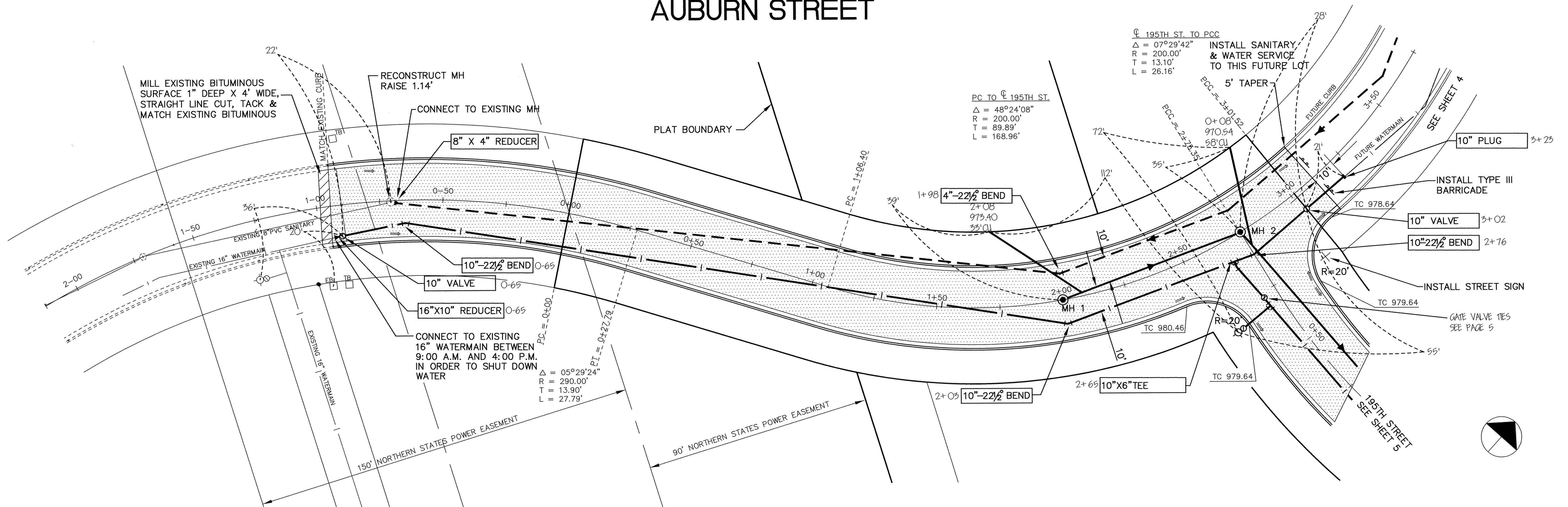


AUBURN STREET



I HEREBY CERTIFY THAT THIS PLAN, SPECIFICATION, OR REPORT WAS PREPARED BY ME OR UNDER MY DIRECT SUPERVISION AND THAT I AM A DULY REGISTERED PROFESSIONAL ENGINEER UNDER THE LAWS OF THE STATE OF MINNESOTA.
George J. Mann
 DATE 8/21/96 REG. NO. 15316

MSA
 CONSULTING ENGINEERS
 1326 ENERGY PARK DRIVE
 ST. PAUL, MINNESOTA 55108
 (612) 644-4389

DATE	DESCRIPTION	DESIGNED	SEF
		CHECKED	
		DRAWN	RKM

GRAPHIC SCALE
 0 20
 0 5
 L VERT. J

CITY OF ELK RIVER
SANITARY SEWER, WATERMAIN, STREET & STORM SEWER
AUBURN STREET
 0+00 TO 3+75

DATE JULY 1996 SHEET 3 OF 16 SHEETS PROJECT NO. 230-292

RECORD PLAN
JANUARY 1997

DRAWING NUMBER

DRAWING NUMBER

DRAWING NUMBER

DRAWING NUMBER
HILLS 596
3

1326 ENERGY PARK DRIVE
 ST. PAUL, MINNESOTA 55108
 (612) 644-4389
 PROJECT NO. 230-292