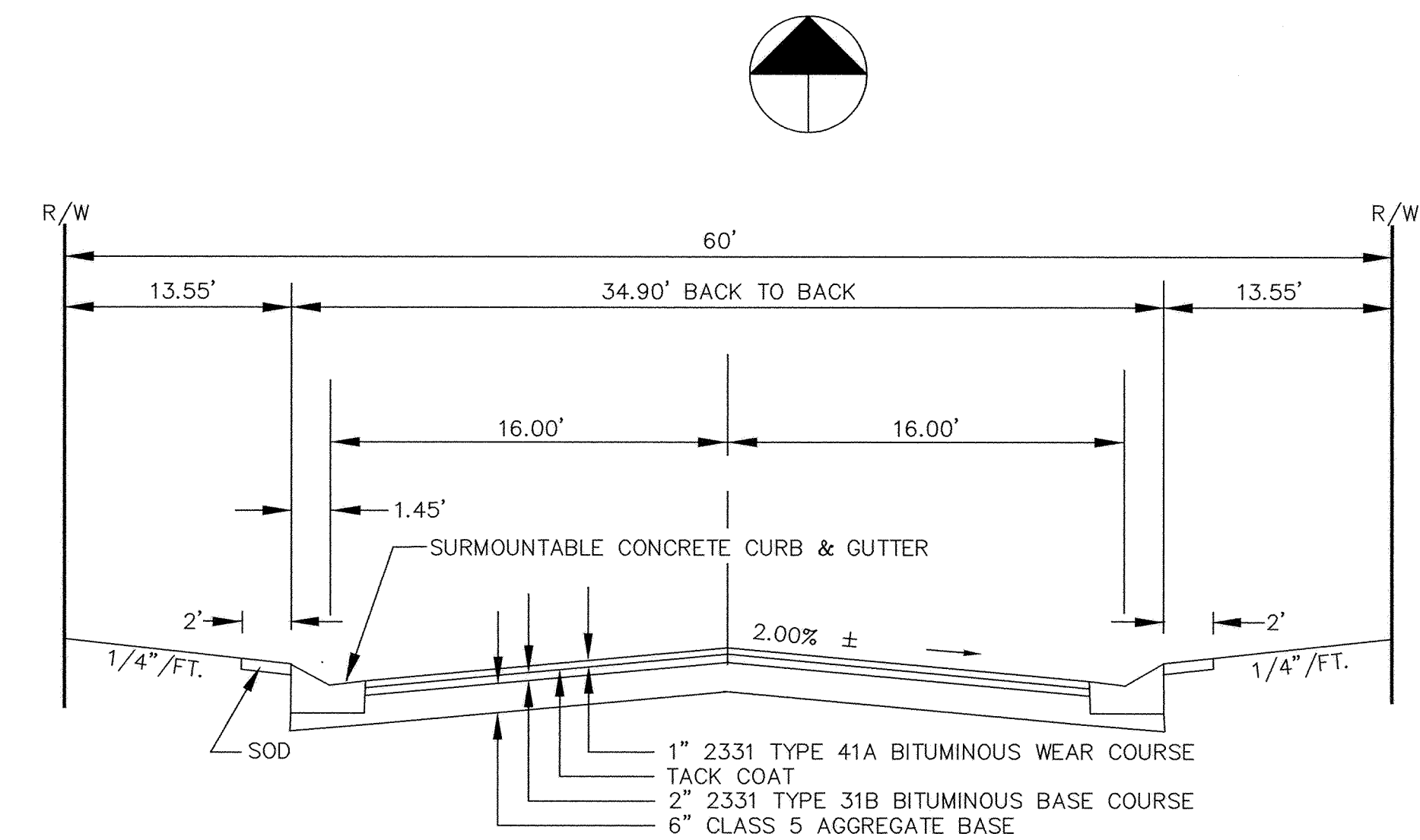
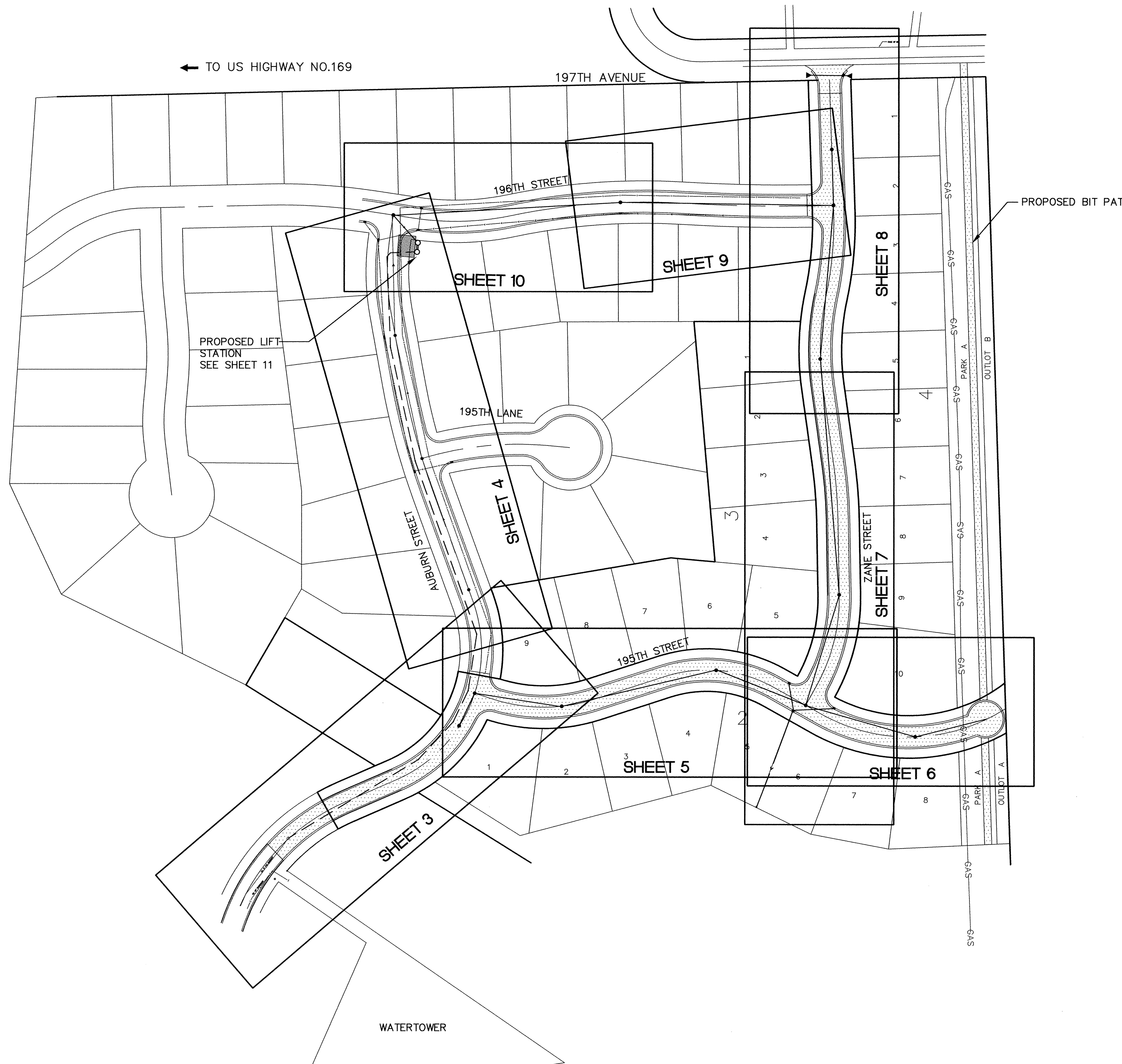
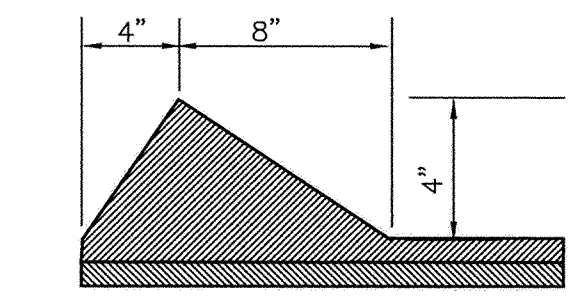


SDCO PROJECTS - LANDSCAPE ARCHITECTURE
 PREPARED BY SHEET NUMBER 9955



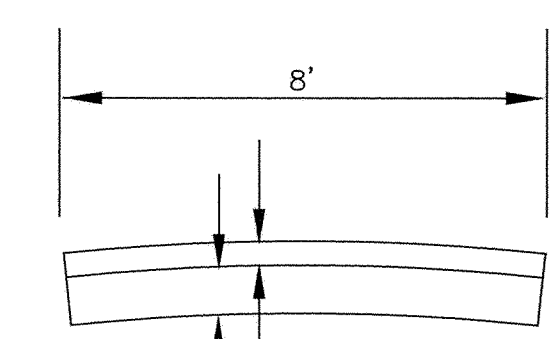
TYPICAL STREET SECTION

NOTE:
B618 CONCRETE CURB AND GUTTER SHALL BE PLACED AROUND RADII AND AT STORM SEWER STRUCTURES.



TYPICAL BITUMINOUS BERM DETAIL

NOTE:
4" MEASURED FROM TOP OF WEAR TO TOP OF BERM



TYPICAL BITUMINOUS PATH SECTION

RECORD PLAN
JANUARY 1997

I HEREBY CERTIFY THAT THIS PLAN, SPECIFICATION, OR REPORT WAS PREPARED BY ME OR UNDER MY DIRECT SUPERVISION AND THAT I AM A DULY REGISTERED PROFESSIONAL ENGINEER UNDER THE LAWS OF THE STATE OF MINNESOTA.
Ernst Maurer
DATE 8/21/96 REG. NO. 15316

1326 ENERGY PARK DRIVE
ST. PAUL, MINNESOTA 55108
(612) 644-4389

REVISIONS	DATE	DESCRIPTION	DESIGNED	SEF
	9/11/96	REVISE UTILITY LAYOUT	CHECKED	
			DRAWN	RKM
			GRAPHIC SCALE	
			0 HORIZ. 80	
			0 VERT. 1	

CITY OF ELK RIVER HILLSIDE ESTATES FIFTH ADDITION INDEX MAP			
DATE	JULY 1996	SHEET	2 OF 16 SHEETS
PROJECT NO.	230-292		