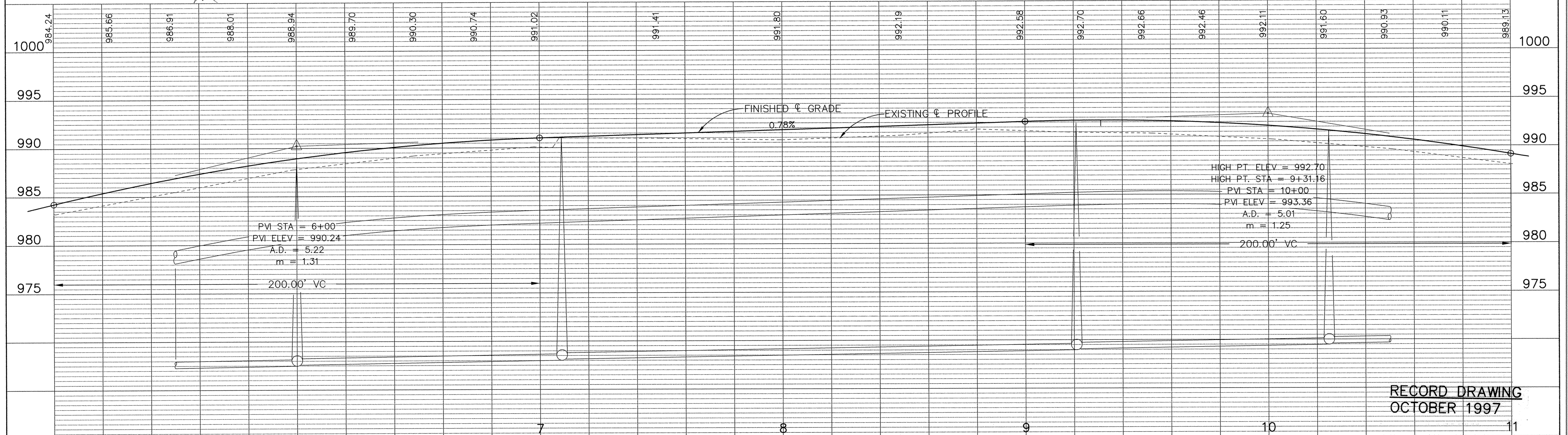
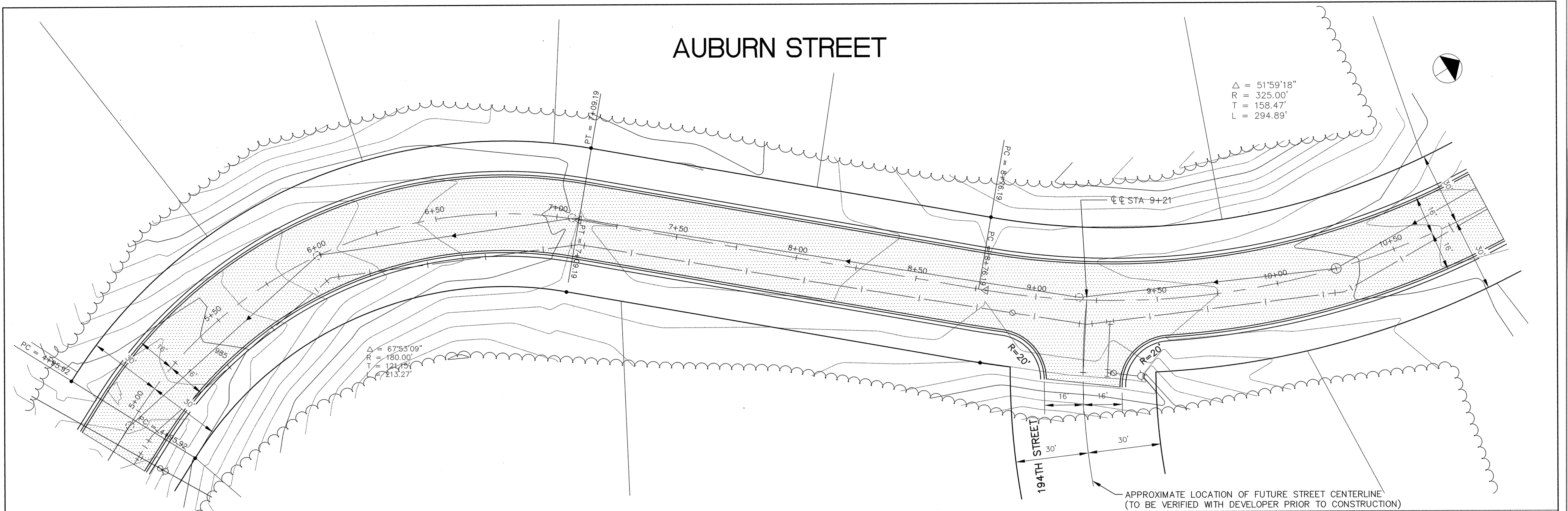
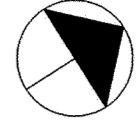


AUBURN STREET

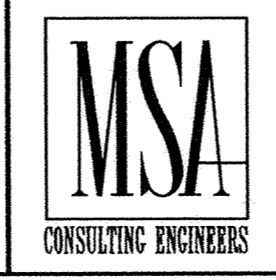
$\Delta = 51^{\circ}59'18''$
 $R = 325.00'$
 $T = 158.47'$
 $L = 294.89'$



RECORD DRAWING
OCTOBER 1997

I HEREBY CERTIFY THAT THIS PLAN, SPECIFICATION, OR REPORT WAS PREPARED BY ME OR UNDER MY DIRECT SUPERVISION AND THAT I AM A DULY REGISTERED PROFESSIONAL ENGINEER UNDER THE LAWS OF THE STATE OF MINNESOTA.

Tom J. Mauer
DATE 10/10/94 REG. NO. 15316



1326 ENERGY PARK DRIVE
ST. PAUL, MINNESOTA 55108
(612) 644-4389

9800 SHELARD PARKWAY
MINNEAPOLIS, MINNESOTA 55441
(612) 546-0432

REVISIONS	DATE	DESCRIPTION

DESIGNED <u>LCS</u>	CITY OF ELK RIVER SANITARY SEWER AND WATERMAIN AUBURN STREET	STA. 5+50 TO 10+50
CHECKED <u>LCS</u>		
DRAWN <u>LCS</u>		
GRAPHIC SCALE		DATE <u>SEPT. 1994</u>
0 HORIZ. 20		SHEET <u>5</u> OF <u>15</u> SHEETS
0 VERT. 5		PROJECT NO. <u>230-227</u>

1116