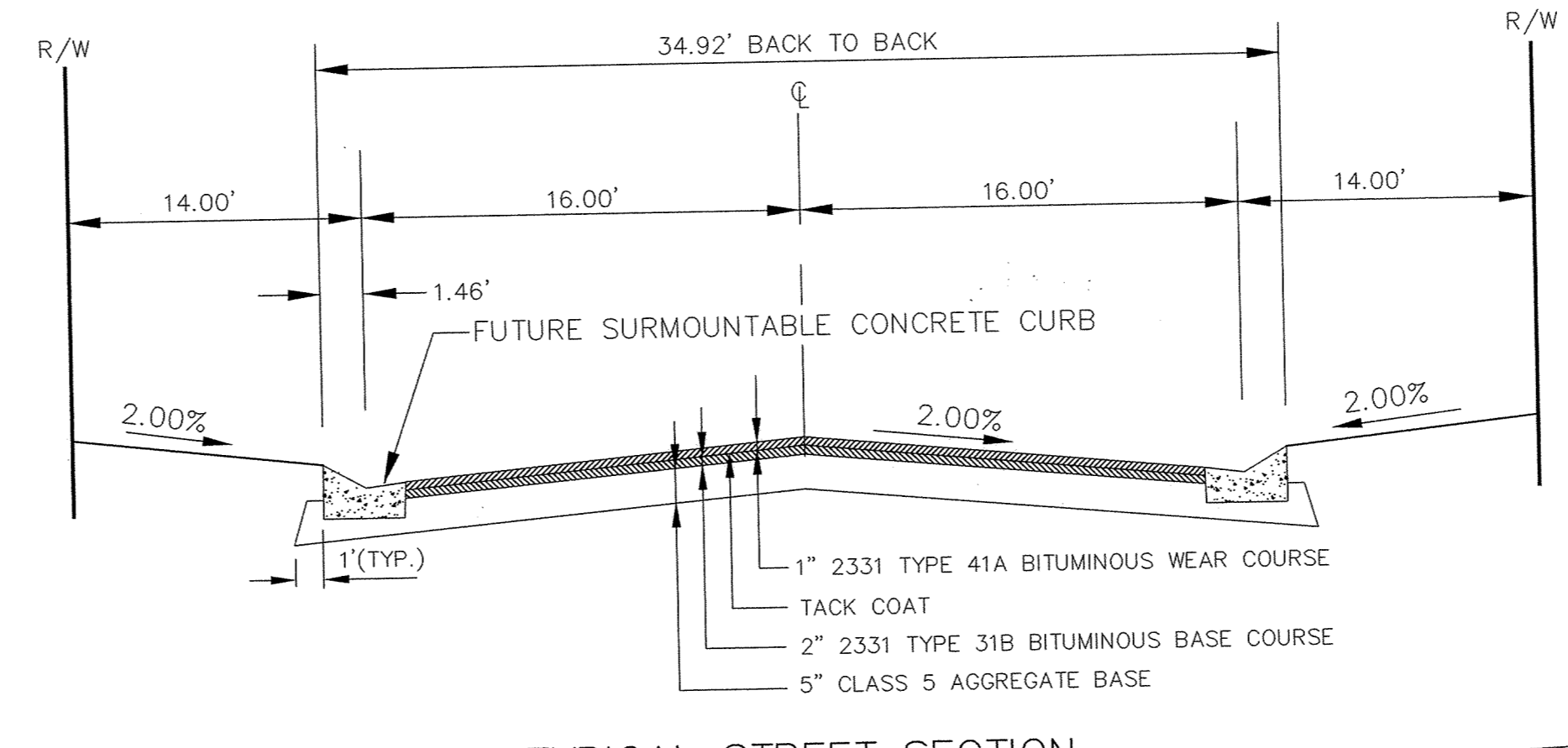
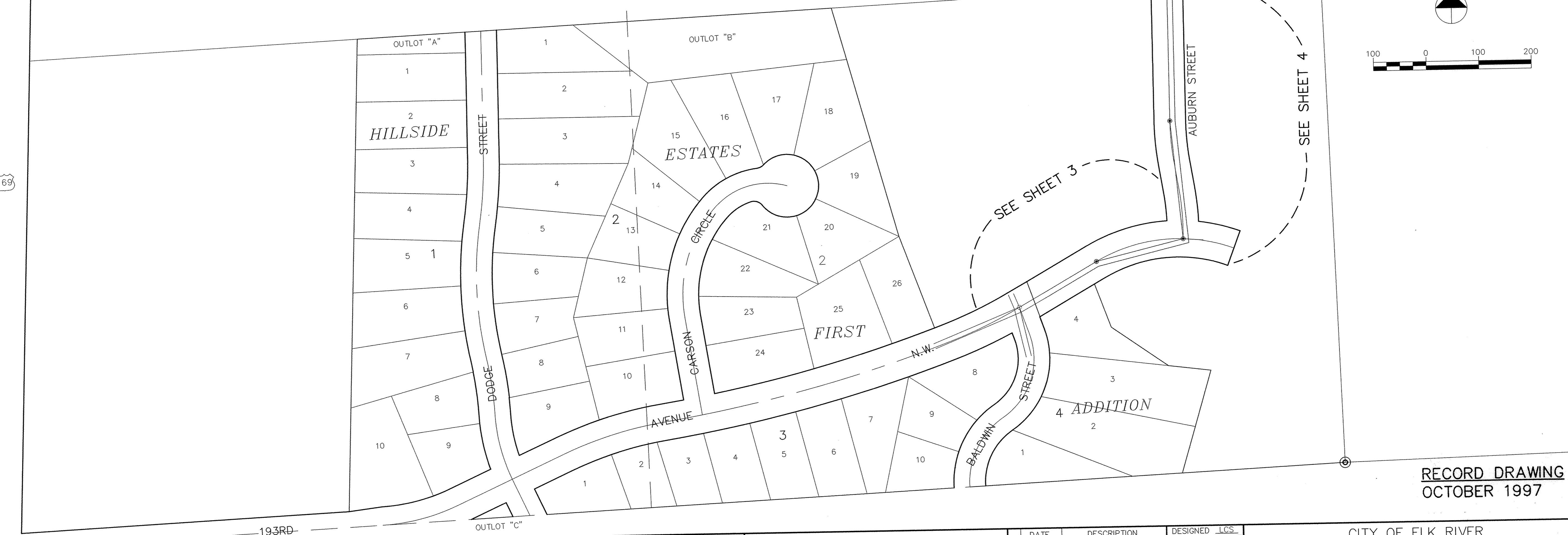


TYPICAL STREET SECTION
(70' R.O.W.)
193RD AVENUE N.W.



TYPICAL STREET SECTION
(60' R.O.W.)
AUBURN STREET



RECORD DRAWING
OCTOBER 1997

I HEREBY CERTIFY THAT THIS PLAN, SPECIFICATION, OR REPORT WAS PREPARED BY ME OR UNDER MY DIRECT SUPERVISION AND THAT I AM A DULY REGISTERED PROFESSIONAL ENGINEER UNDER THE LAWS OF THE STATE OF MINNESOTA.
Steven J. Mauer
 DATE 10/10/94 REG. NO. 15316



1326 ENERGY PARK DRIVE
ST. PAUL, MINNESOTA 55108
(612) 644-4389
 9800 SHELARD PARKWAY
MINNEAPOLIS, MINNESOTA 55441
(612) 546-0432

REVISIONS	DATE	DESCRIPTION	DESIGNED LCS	CHECKED LCS	DRAWN LCS

GRAPHIC SCALE
 0 HORIZ.
 0 VERT.

CITY OF ELK RIVER
HILLSIDE ESTATES THIRD STREETS AND STORM DEWER
INDEX MAP
 DATE SEPT. 1994 SHEET 2 OF 15 SHEETS PROJECT NO. 230-227