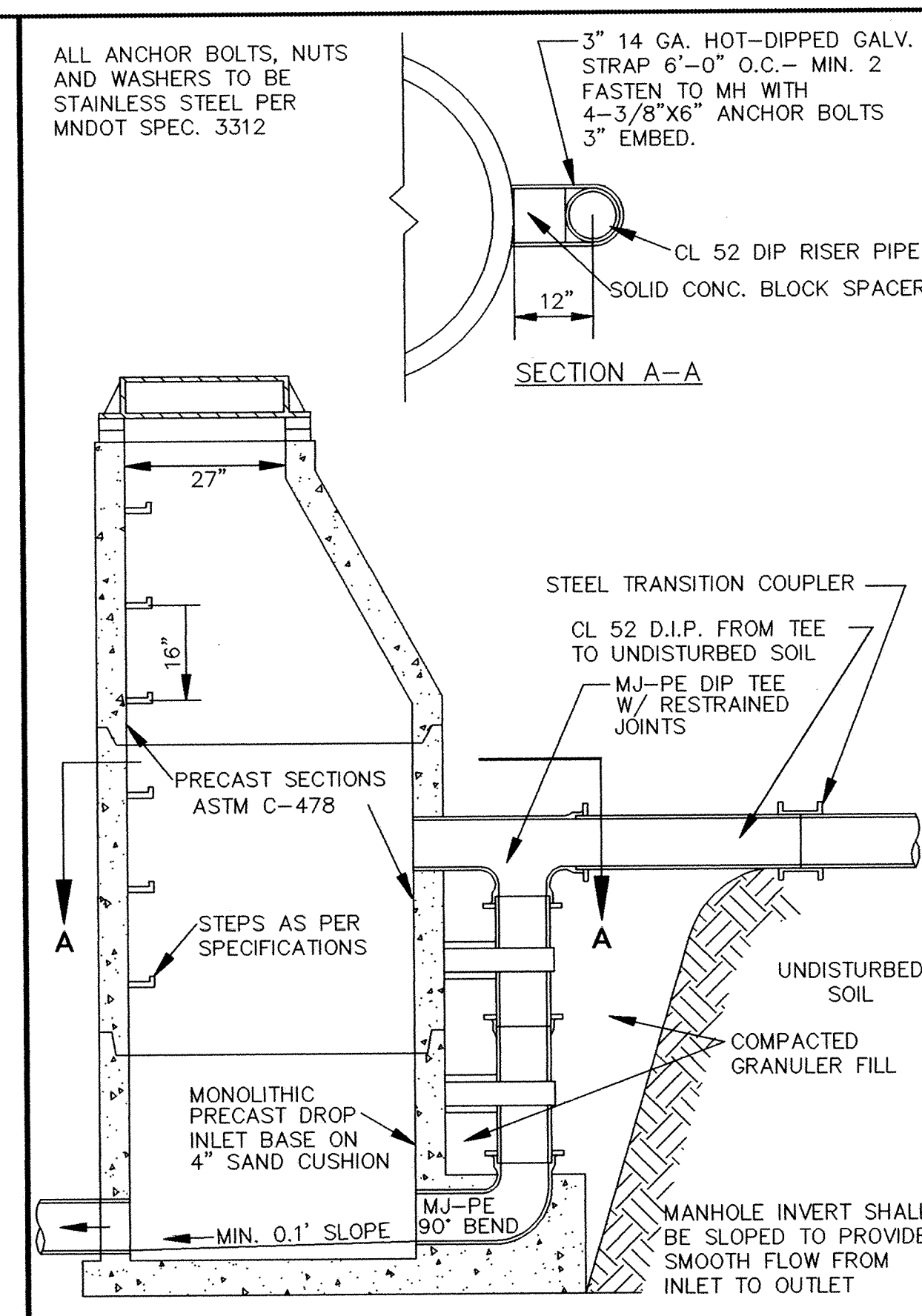
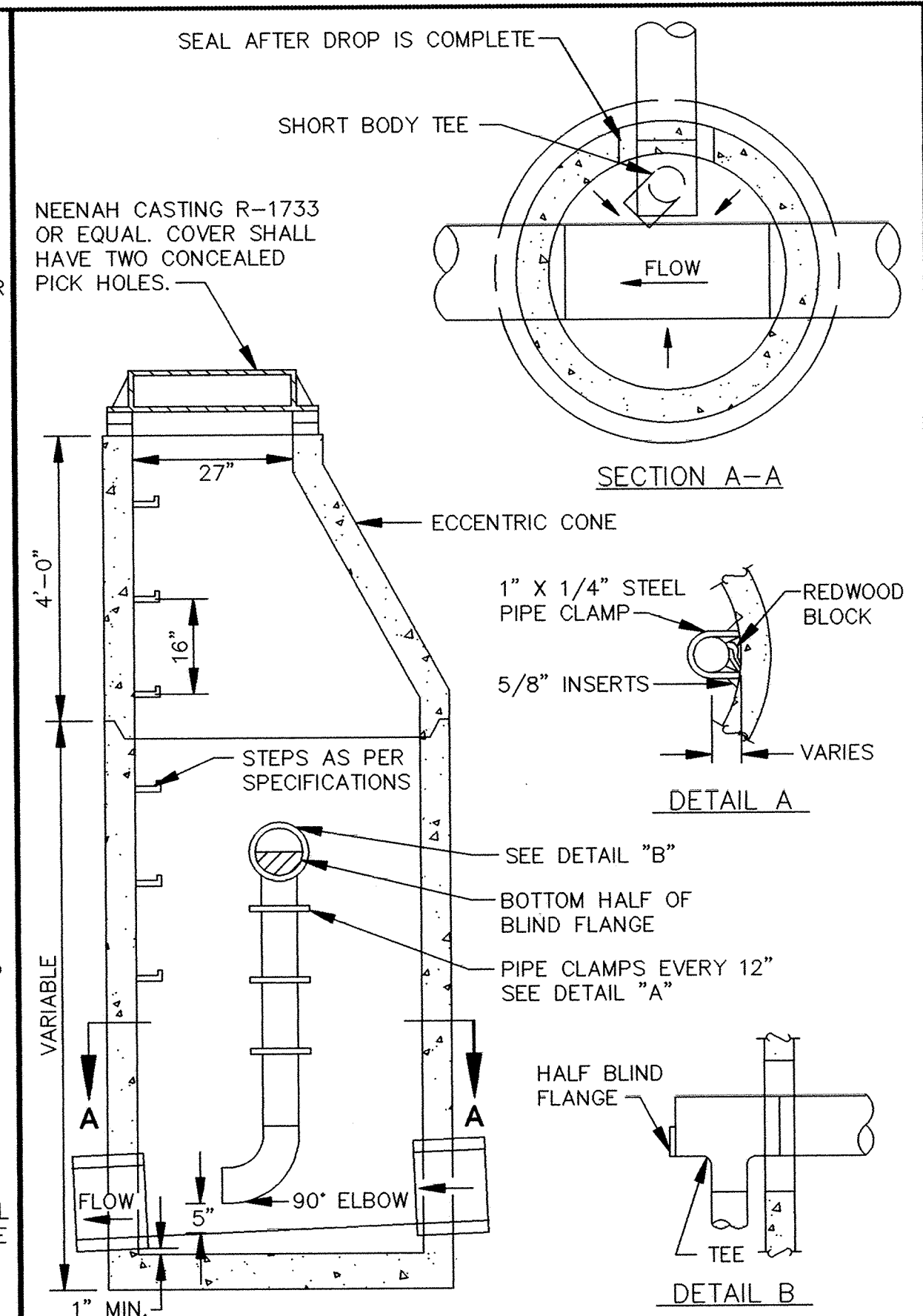


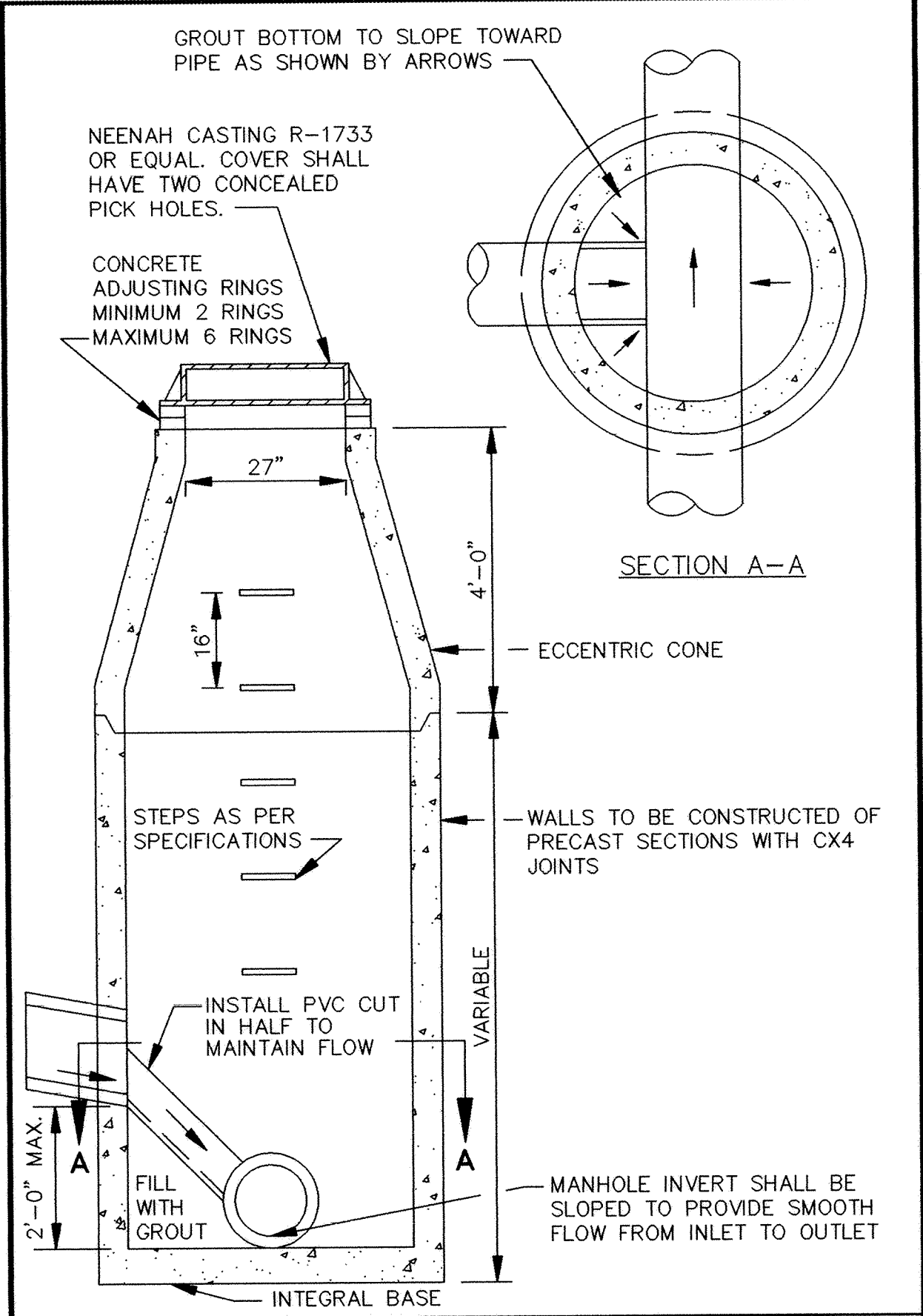
STANDARD AIR RELIEF MANHOLE



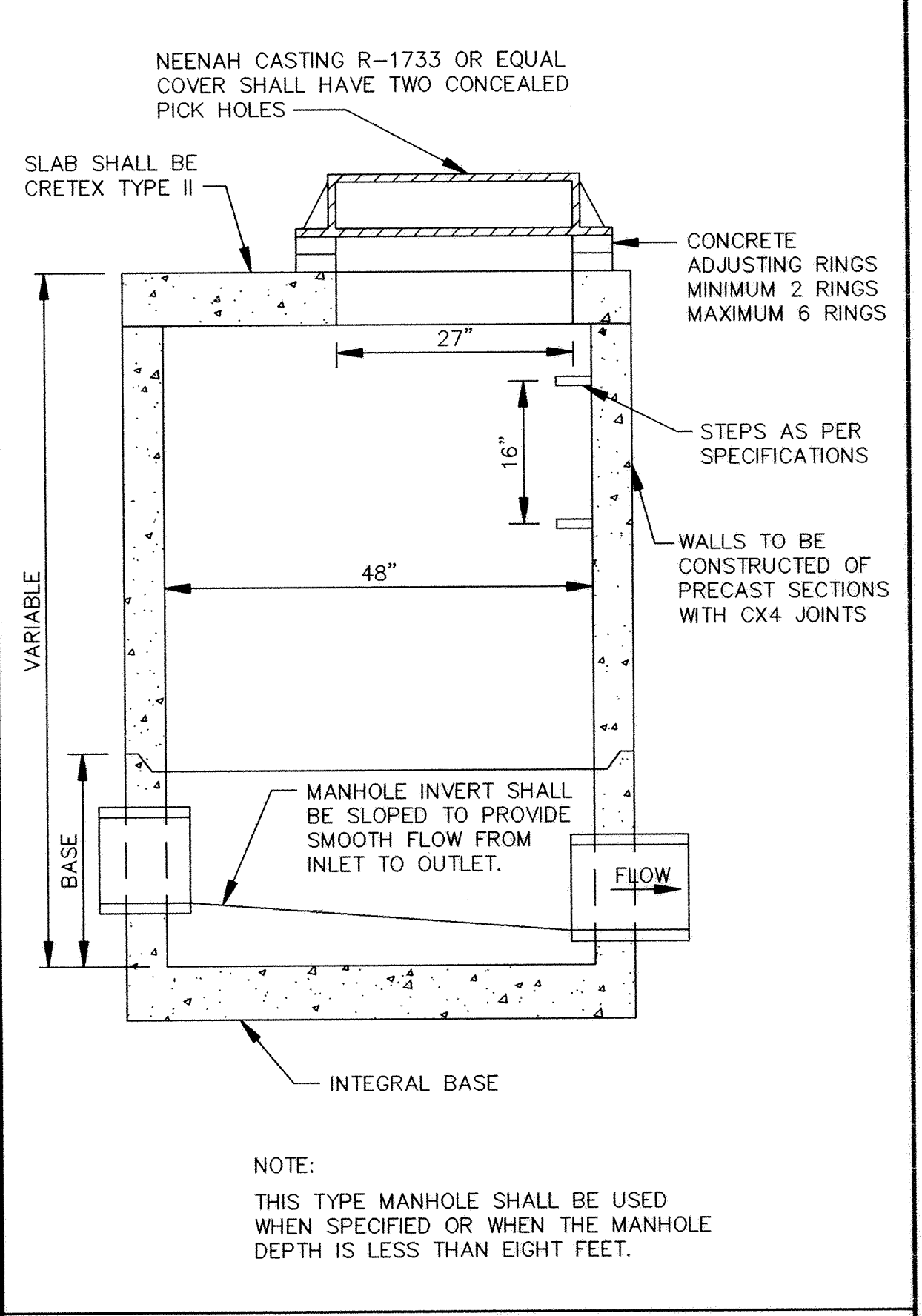
OUTSIDE DROP MANHOLE



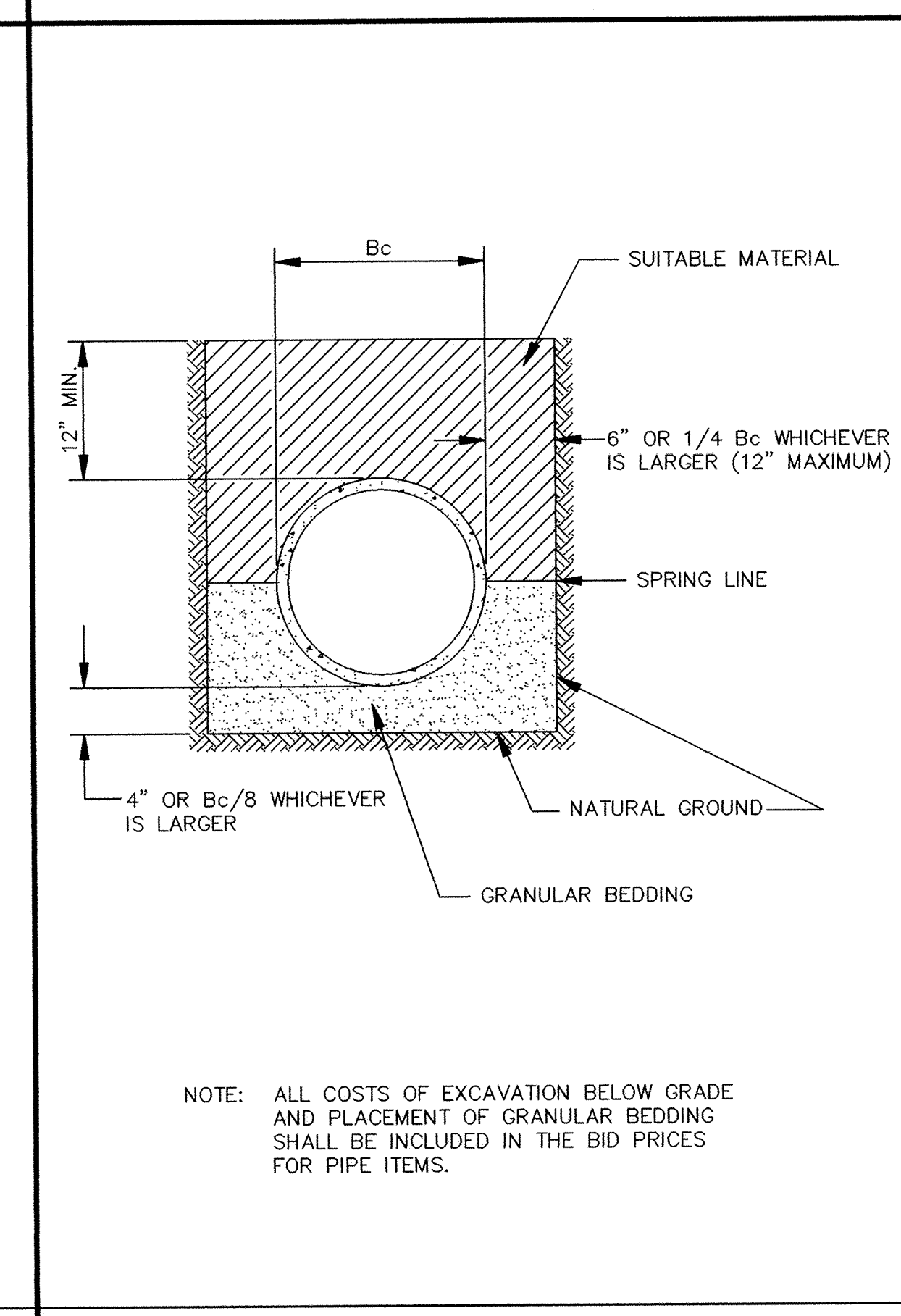
INSIDE DROP MANHOLE



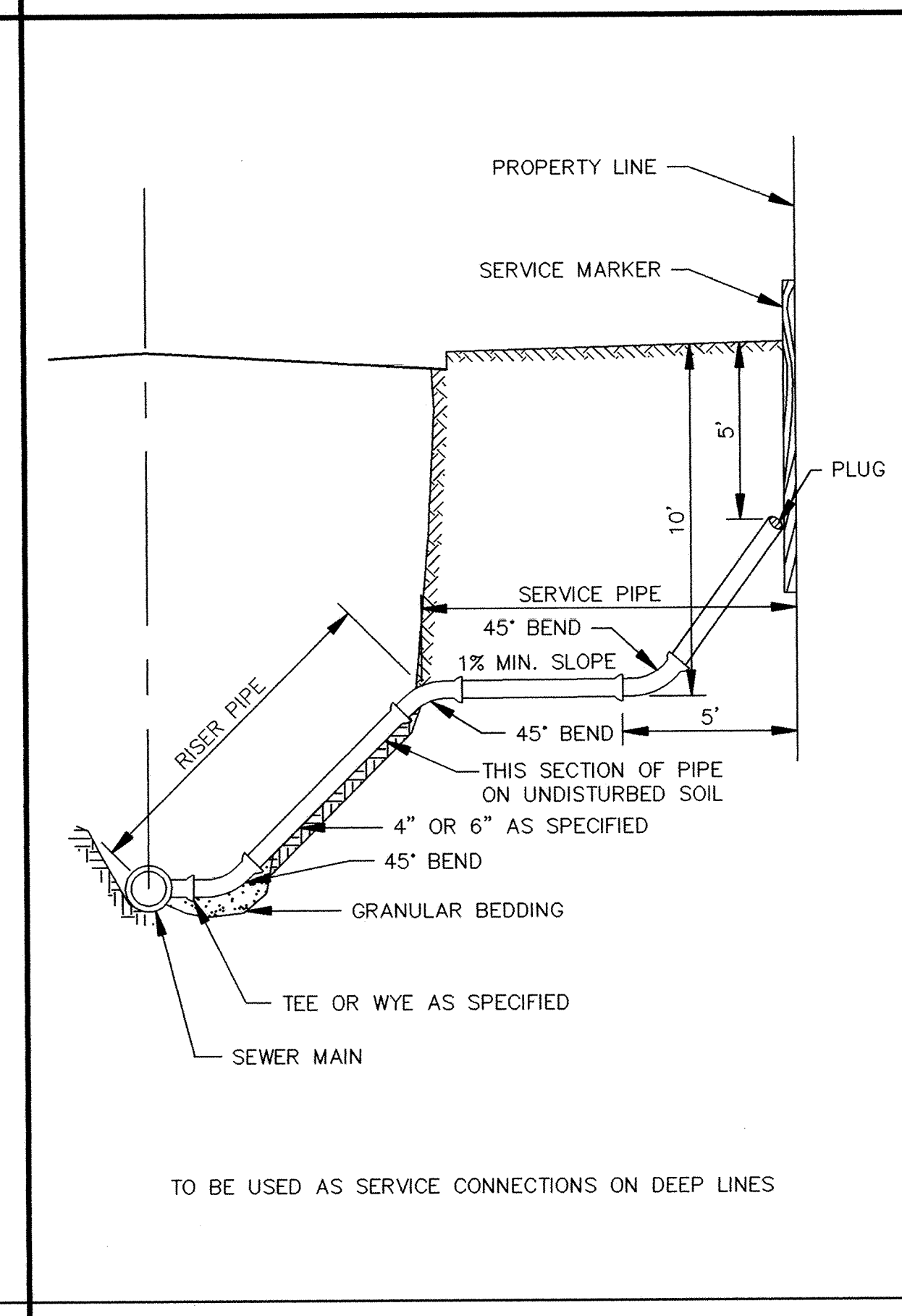
INSIDE DROP MANHOLE (TWO FEET OR LESS)



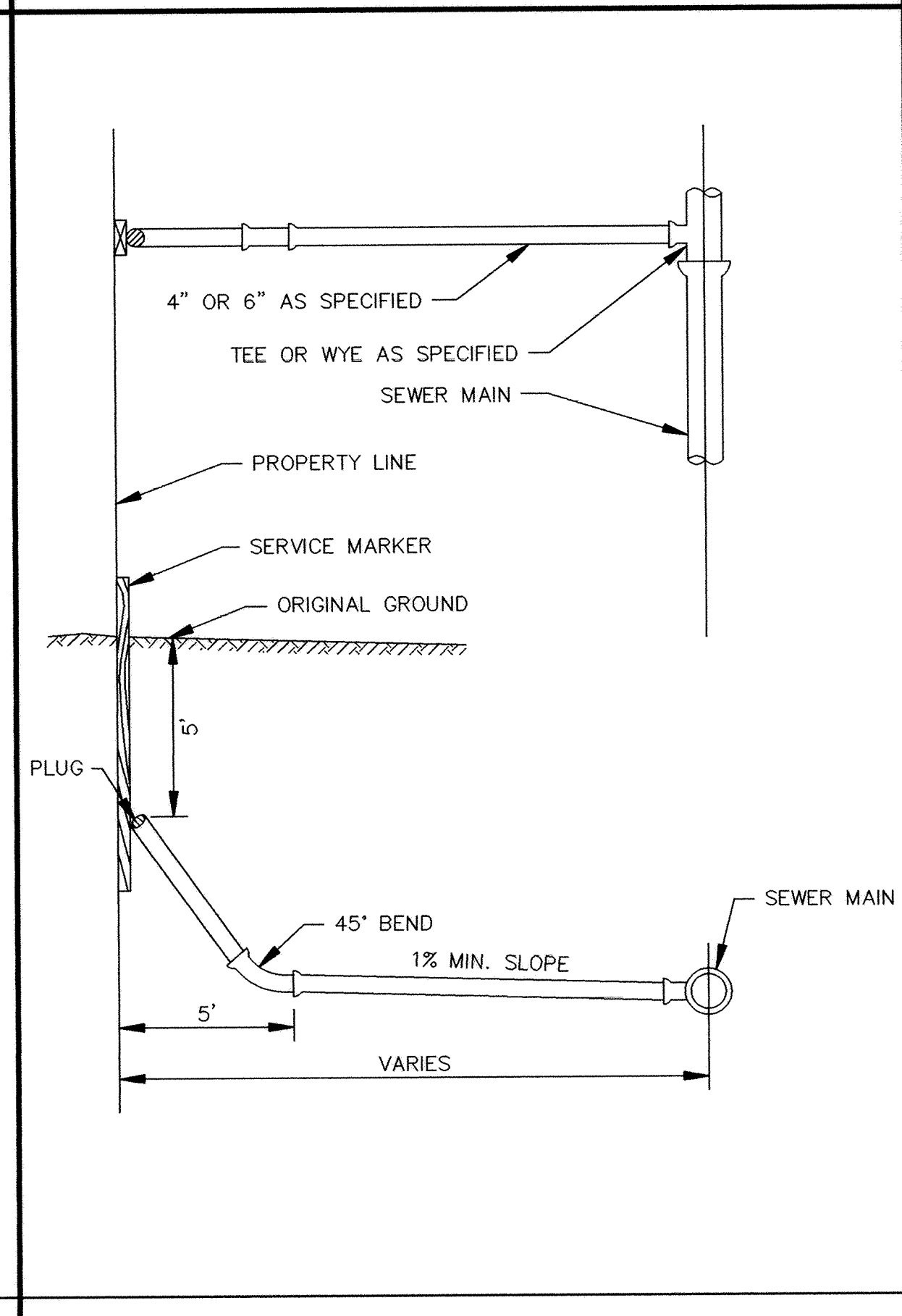
SLAB TOP MANHOLE



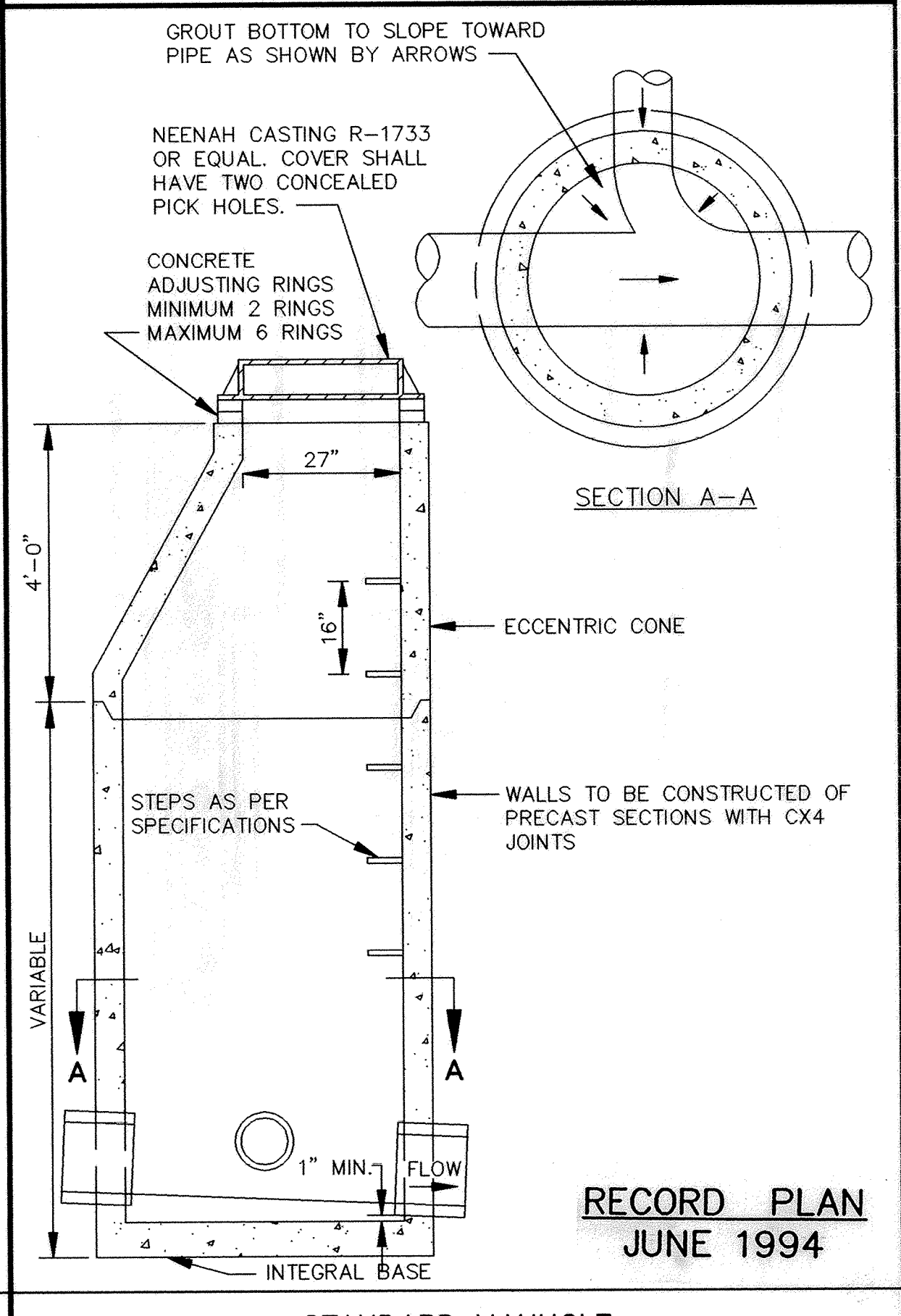
CLASS B PIPE BEDDING



SERVICE RISER SECTION



TYPICAL HOUSE SERVICE



STANDARD MANHOLE

ER190-01

I HEREBY CERTIFY THAT THIS PLAN, SPECIFICATION, OR REPORT WAS PREPARED BY ME OR UNDER MY DIRECT SUPERVISION AND THAT I AM A DULY REGISTERED PROFESSIONAL ENGINEER UNDER THE LAWS OF THE STATE OF MINNESOTA.  
*Mark L. Gusham*  
DATE 10/21/93 REG. NO. 19130

**MSA**  
CONSULTING ENGINEERS

1326 ENERGY PARK DRIVE  
ST. PAUL, MINNESOTA 55108  
(612) 644-4389  
9800 SHELARD PARKWAY  
MINNEAPOLIS, MINNESOTA 55441  
(612) 546-0432

REVISIONS	DATE	DESCRIPTION	DESIGNED	CHECKED	DRAWN	CLS

CITY OF ELK RIVER  
NORTHEAST AREA - WATERMAIN EXTENSION  
SANITARY SEWER DETAILS  
DATE SEPT. 1993 SHEET 11 OF 12 SHEETS PROJECT NO. 230-190

DRAWING NUMBER  
HILSESN 93  
11  
DRAWING NUMBER  
HILSESN 93