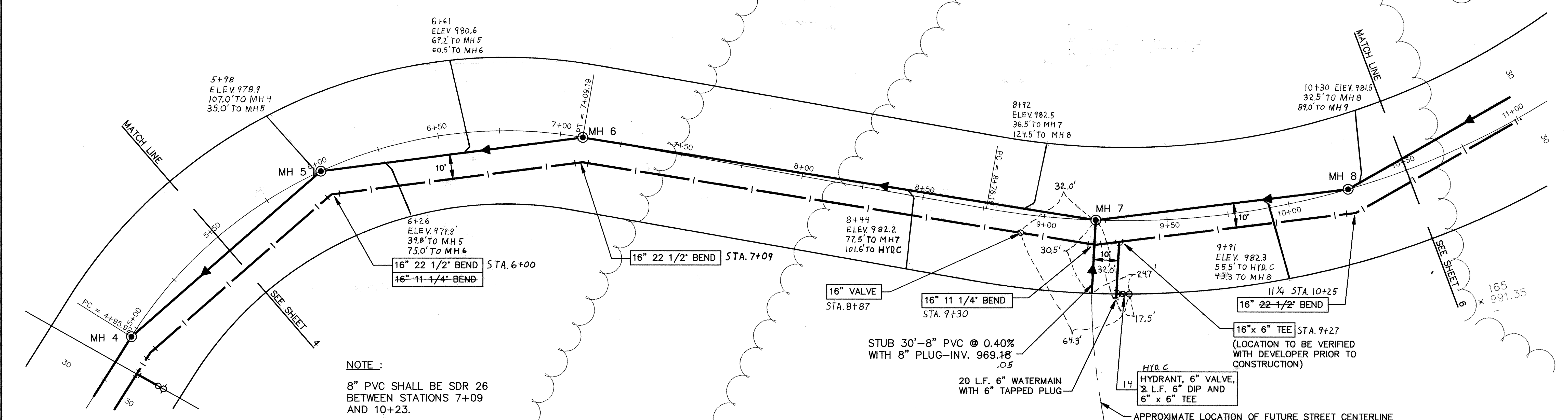
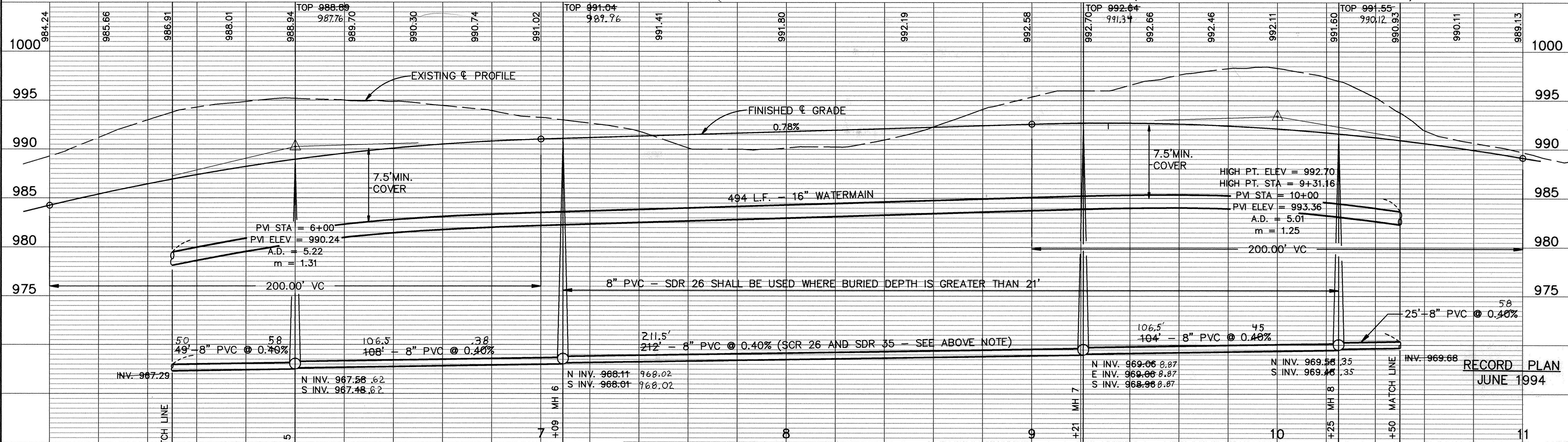


FUTURE STREET



NOTE:
8" PVC SHALL BE SDR 26 BETWEEN STATIONS 7+09 AND 10+23.



DATE	DESCRIPTION	DESIGNED	M/JG	CITY OF ELK RIVER SANITARY SEWER AND WATERMAIN FUTURE STREET	
				STA. 5+50 TO 10+50	
				DATE SEPT. 1993	SHEET 5 OF 12 SHEETS
				PROJECT NO. 230-190	

I HEREBY CERTIFY THAT THIS PLAN, SPECIFICATION, OR REPORT WAS PREPARED BY ME OR UNDER MY DIRECT SUPERVISION AND THAT I AM A DULY REGISTERED PROFESSIONAL ENGINEER UNDER THE LAWS OF THE STATE OF MINNESOTA.
Mark S. Lusham
DATE 10/21/93 REG. NO. 19130

MSA
CONSULTING ENGINEERS
1326 ENERGY PARK DRIVE
ST. PAUL, MINNESOTA 55108
(612) 644-4389
9800 SHELARD PARKWAY
MINNEAPOLIS, MINNESOTA 55441
(612) 546-0432

REVISIONS	DATE	DESCRIPTION	DESIGNED	M/JG

GRAPHIC SCALE
0 HORIZ. 20'
0 VERT. 5'

DRAWING NUMBER
HILSESN.93
5