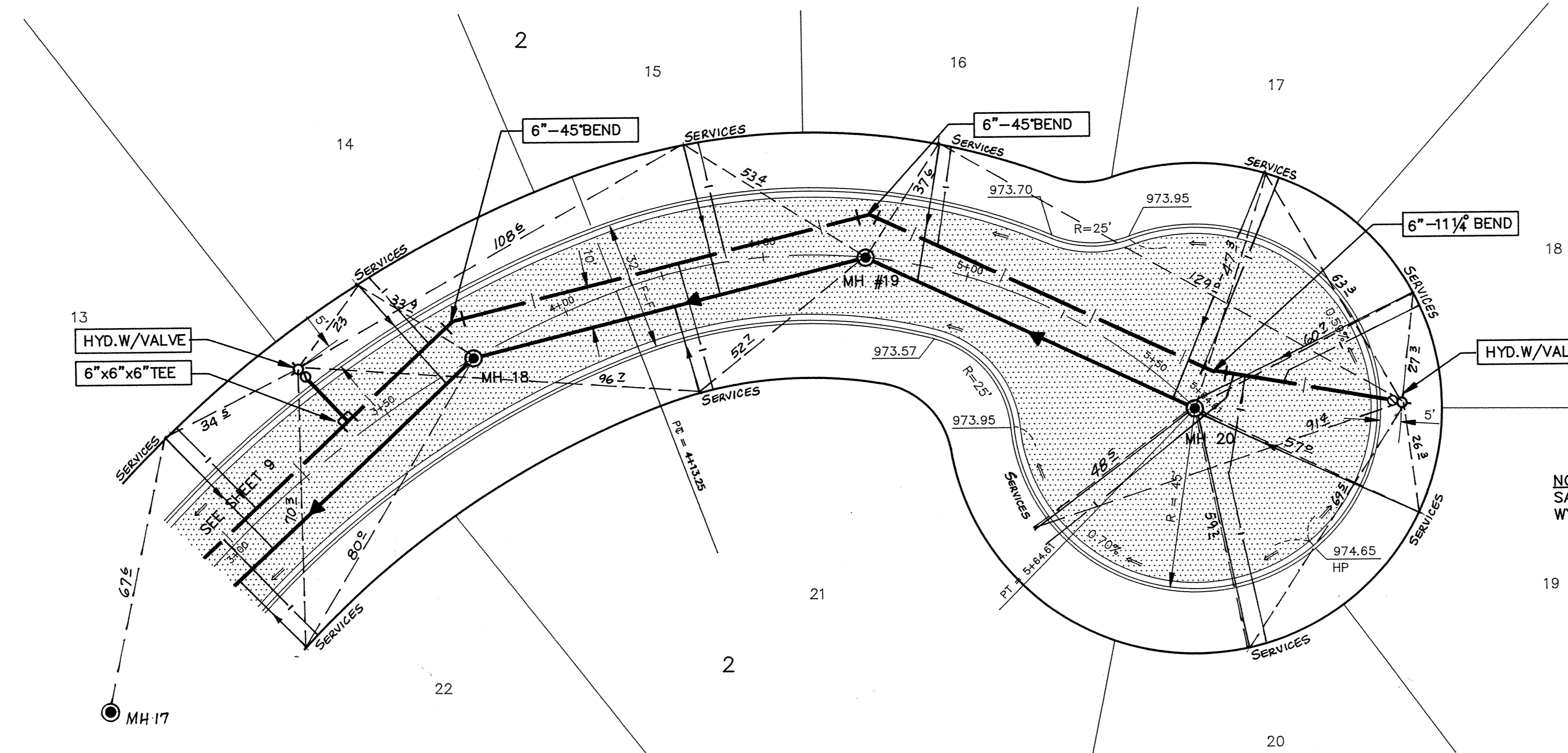
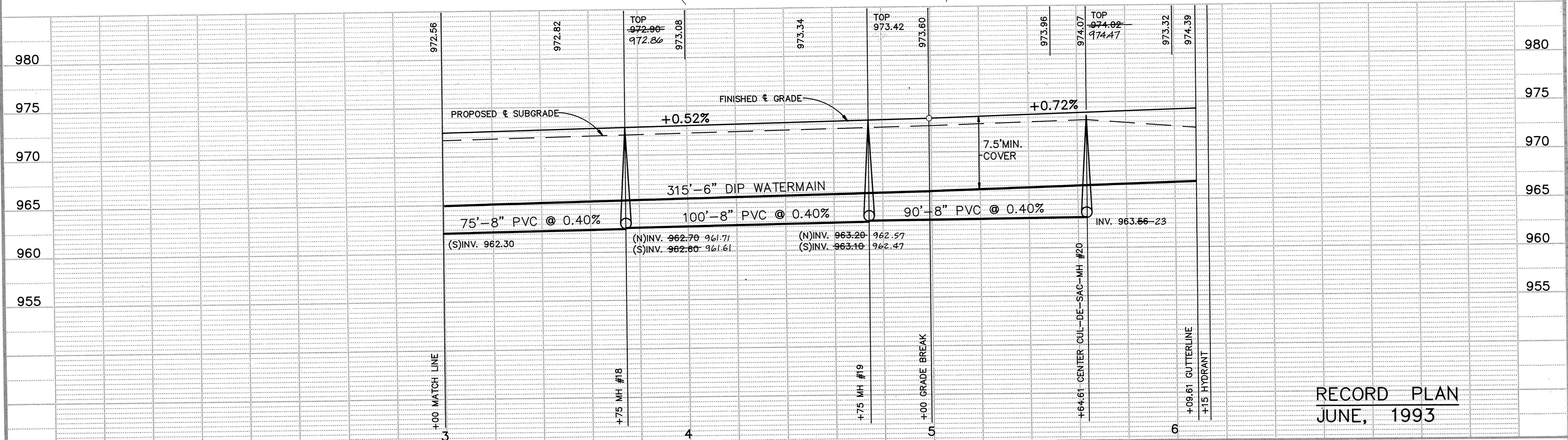


CARSON CIRCLE N.W.



NOTE:
SANITARY SERVICES TO BE PROVIDED WITH 4"x8"
WYE PRIOR TO MH20 FOR CUL-DE-SAC LOTS.



RECORD PLAN
JUNE, 1993

I HEREBY CERTIFY THAT THIS PLAN, SPECIFICATION, OR REPORT WAS PREPARED BY ME OR UNDER MY DIRECT SUPERVISION AND THAT I AM A DULY REGISTERED PROFESSIONAL ENGINEER UNDER THE LAWS OF THE STATE OF MINNESOTA.
Kenjy J. Moore
DATE 6/8/92 REG. NO. 15314

Maier Stewart & Associates Inc.
CONSULTING ENGINEERS
9800 SHELARD PARKWAY (612) 546-0432 MINNEAPOLIS, MINNESOTA 55441
1959 SLOAN PLACE (612) 774-6021 ST. PAUL, MINNESOTA 55117

DATE	DESCRIPTION	DESIGNED
		CHECKED
		DRAWN MRE
		GRAPHIC SCALE
		0 HORIZ. 20
		0 VERT. 5

CITY OF ELK RIVER
SANITARY SEWER, WATERMAIN, STORM SEWER
AND STREET CONSTRUCTION
CARSON CIRCLE N.W.

DATE JUNE 1992 SHEET 10 OF 19 SHEETS PROJECT NO. 230-140