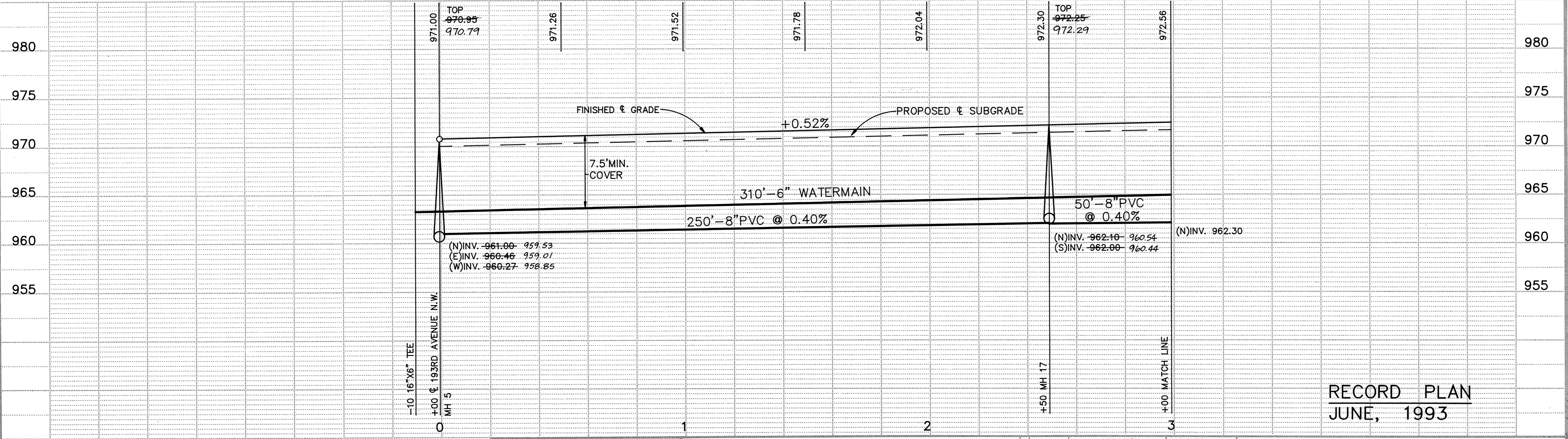
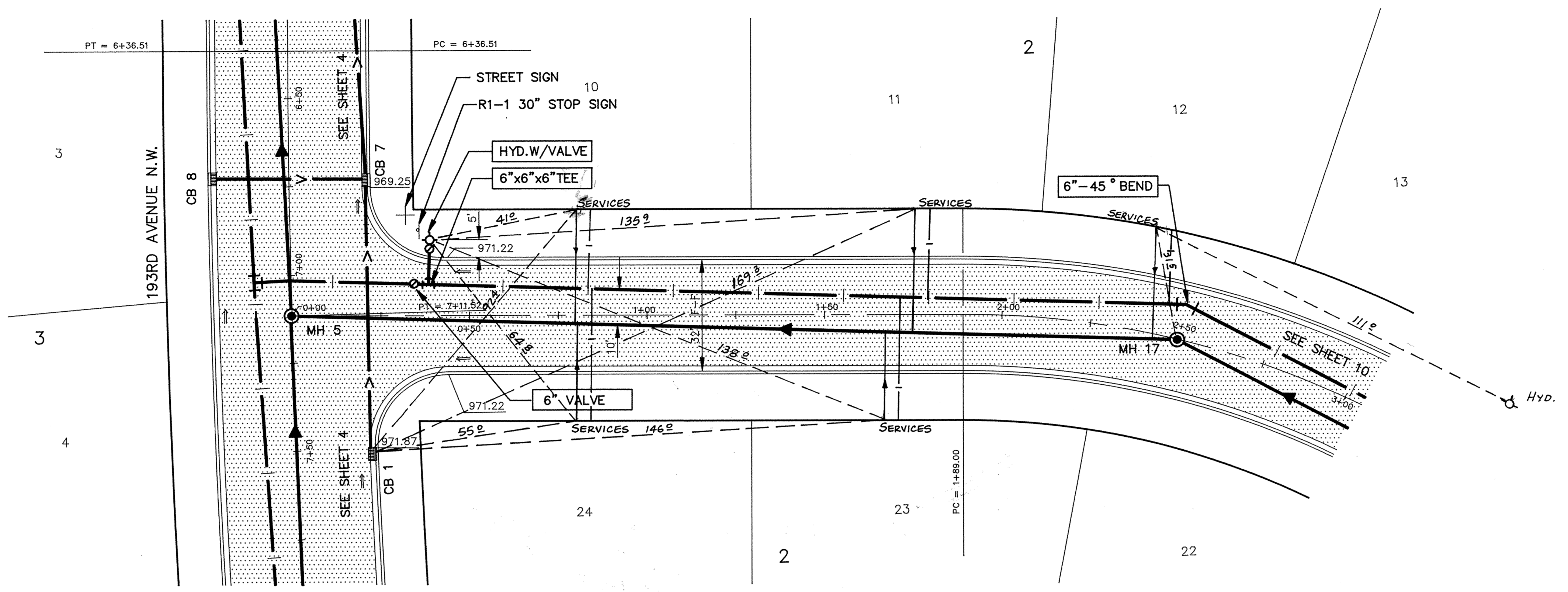


CARSON CIRCLE N.W.



RECORD PLAN
JUNE, 1993

I HEREBY CERTIFY THAT THIS PLAN, SPECIFICATION, OR REPORT WAS PREPARED BY ME OR UNDER MY DIRECT SUPERVISION AND THAT I AM A DULY REGISTERED PROFESSIONAL ENGINEER UNDER THE LAWS OF THE STATE OF MINNESOTA.
W. Stewart
DATE 4/8/92 REG. NO. 15316

Maier Stewart & Associates Inc.
CONSULTING ENGINEERS
9800 SHELARD PARKWAY (612) 546-0432 MINNEAPOLIS, MINNESOTA 55441
1959 SLOAN PLACE (612) 774-6021 ST. PAUL, MINNESOTA 55117

REVISIONS	DATE	DESCRIPTION	DESIGNED	CHECKED	DRAWN	MRF

GRAPHIC SCALE
HORIZ. 20'
VERT. 5'

CITY OF ELK RIVER
SANITARY SEWER, WATERMAIN, STORM SEWER
AND STREET CONSTRUCTION
CARSON CIRCLE N.W.

DATE JUNE 1992 SHEET 9 OF 19 SHEETS PROJECT NO. 230-140