

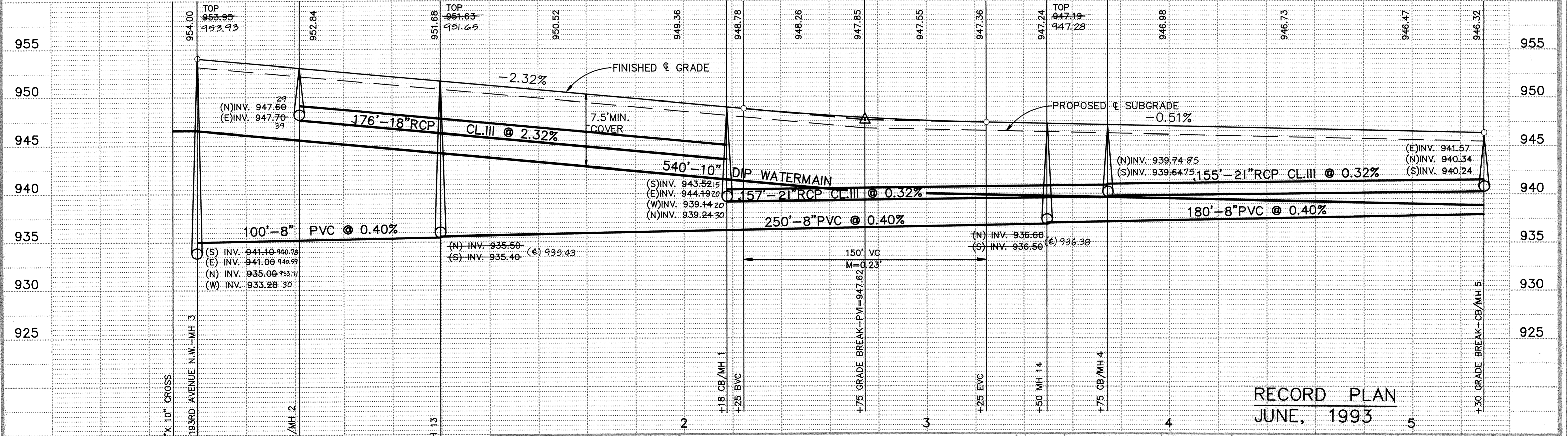
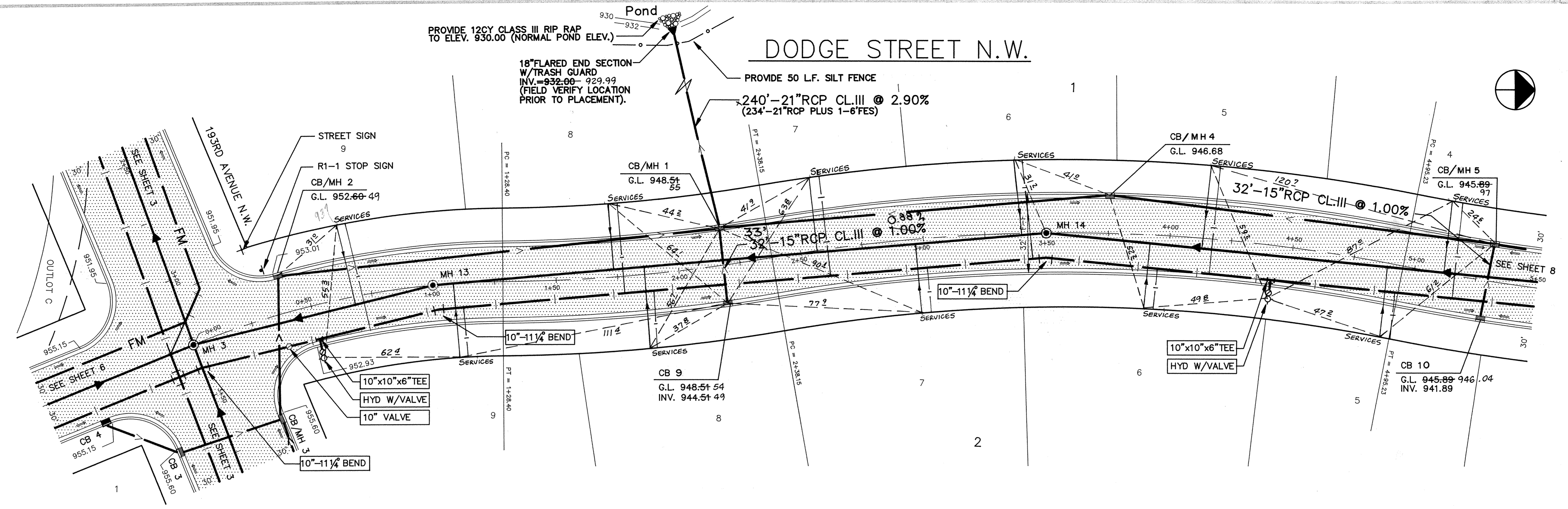
DODGE STREET N.W.

PROVIDE 12CY CLASS III RIP RAP TO ELEV. 930.00 (NORMAL POND ELEV.)

18" FLARED END SECTION W/ TRASH GUARD
INV. -932.00 - 929.99
(FIELD VERIFY LOCATION PRIOR TO PLACEMENT).

PROVIDE 50 LF. SILT FENCE

240'-21" RCP CL. III @ 2.90%
(234'-21" RCP PLUS 1'-6" FES)



RECORD PLAN
JUNE, 1993

I HEREBY CERTIFY THAT THIS PLAN, SPECIFICATION, OR REPORT WAS PREPARED BY ME OR UNDER MY DIRECT SUPERVISION AND THAT I AM A DULY REGISTERED PROFESSIONAL ENGINEER UNDER THE LAWS OF THE STATE OF MINNESOTA.

Scary Mauer
DATE 4/6/92 REG. NO. 15316

Maier Stewart & Associates Inc.
CONSULTING ENGINEERS
9800 SHELARD PARKWAY (612) 546-0432 MINNEAPOLIS, MINNESOTA 55441
1959 SLOAN PLACE (612) 774-6021 ST. PAUL, MINNESOTA 55117

DATE	DESCRIPTION	DESIGNED	CHECKED	DRAWN
				MRF

GRAPHIC SCALE
HORIZ. 20'
VERT. 5'

CITY OF ELK RIVER
SANITARY SEWER, WATERMAIN, STORM SEWER
AND STREET CONSTRUCTION
DODGE STREET N.W.

DATE JUNE, 1992 SHEET 7 OF 19 SHEETS PROJECT NO. 230-140