

# DODGE STREET N.W.

BLK. 2 CHERRYHILL BLUFF 1ST

PROVIDE (3) SEWER & WATER SERVICES TO VACANT LOT LOCATIONS TO BE DETERMINED IN THE FIELD.

REMOVE EXISTING 32' WIDE PAVEMENT W/BIT. CURB AND REPLACE AS PER TYPICAL SECTION N.W.

REMOVE EXISTING PLUG AND EXTEND WATERMAIN

STRAIGHT LINE CUT, TACK, AND MATCH EXISTING BITUMINOUS

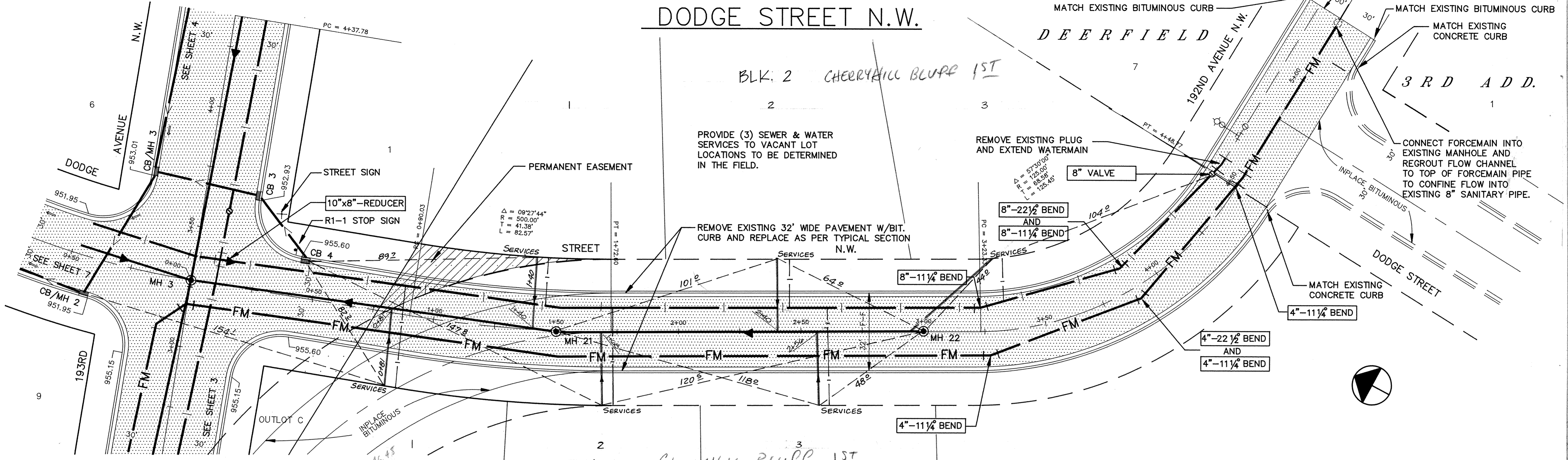
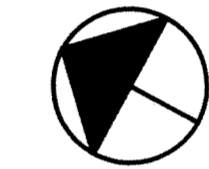
MATCH EXISTING BITUMINOUS CURB

MATCH EXISTING CONCRETE CURB

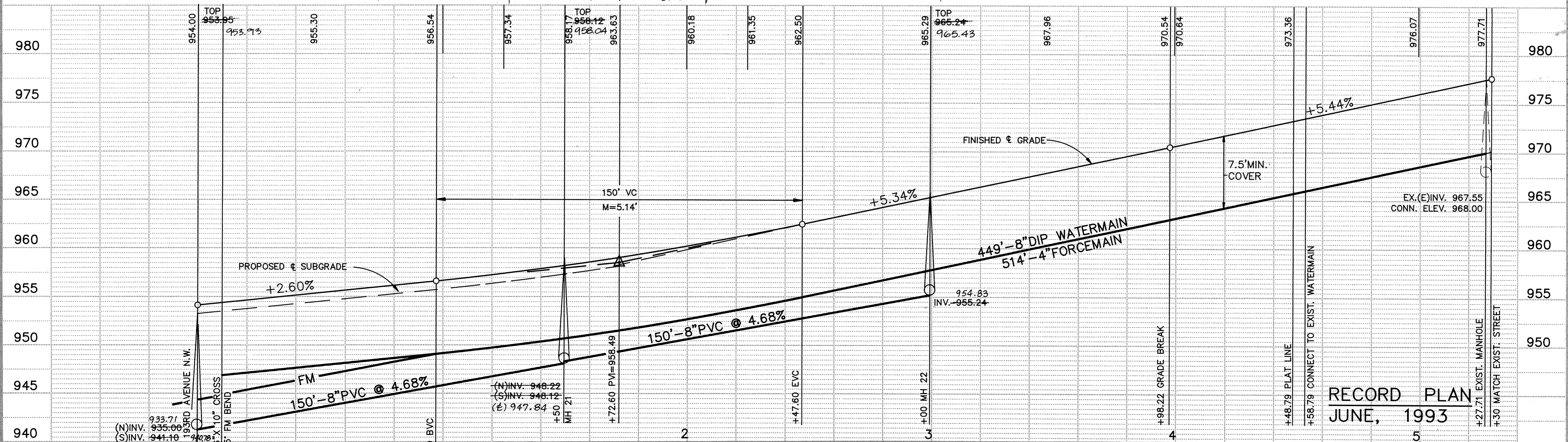
3RD ADD.

CONNECT FORCEMAIN INTO EXISTING MANHOLE AND REGROUT FLOW CHANNEL TO TOP OF FORCEMAIN PIPE TO CONFINE FLOW INTO EXISTING 8" SANITARY PIPE.

MATCH EXISTING CONCRETE CURB



BLK. 1 CHERRYHILL BLUFF 1ST



RECORD PLAN  
JUNE, 1993

I HEREBY CERTIFY THAT THIS PLAN, SPECIFICATION, OR REPORT WAS PREPARED BY ME OR UNDER MY DIRECT SUPERVISION AND THAT I AM A DULY REGISTERED PROFESSIONAL ENGINEER UNDER THE LAWS OF THE STATE OF MINNESOTA.  
*Terry J. Maurer*  
DATE 4/8/92 REG. NO. 15316

**Maier Stewart & Associates Inc.**  
CONSULTING ENGINEERS  
9800 SHELDAR PARKWAY (612) 546-0432 MINNEAPOLIS, MINNESOTA 55441  
1959 SLOAN PLACE (612) 774-6021 ST. PAUL, MINNESOTA 55117

DATE	DESCRIPTION	DESIGNED	CHECKED

GRAPHIC SCALE  
HORIZ. 20'  
VERT. 5'

CITY OF ELK RIVER  
SANITARY SEWER, WATERMAIN, STORM SEWER  
AND STREET CONSTRUCTION  
DODGE STREET N.W.  
DATE JUNE, 1992 SHEET 6 OF 19 SHEETS PROJECT NO. 230-140