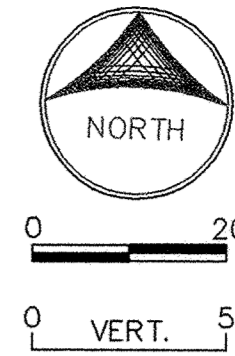
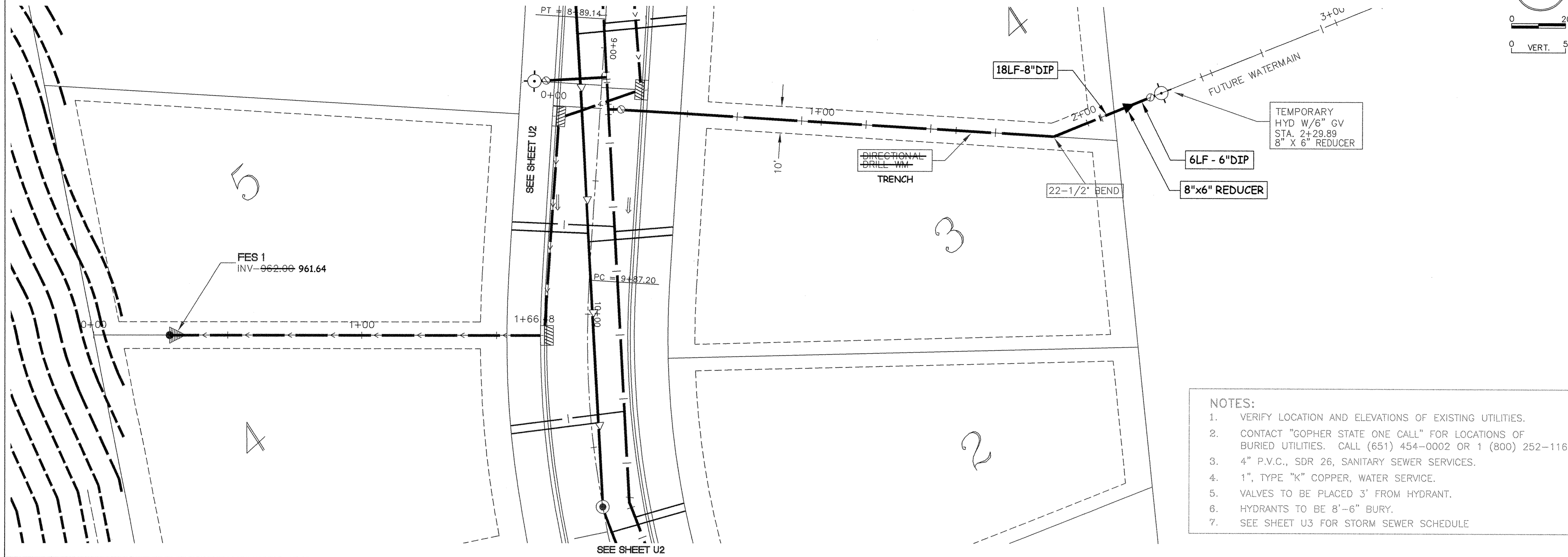
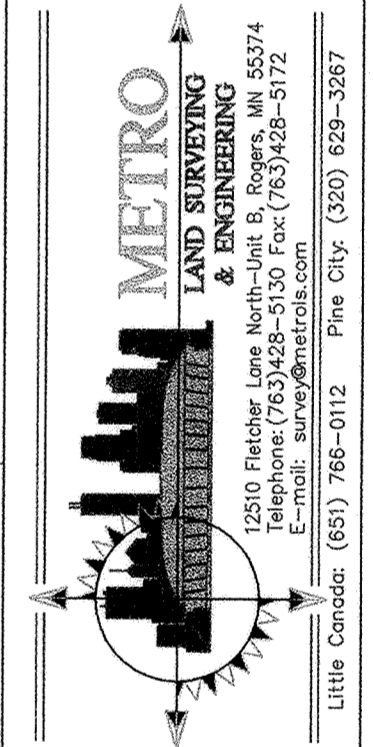
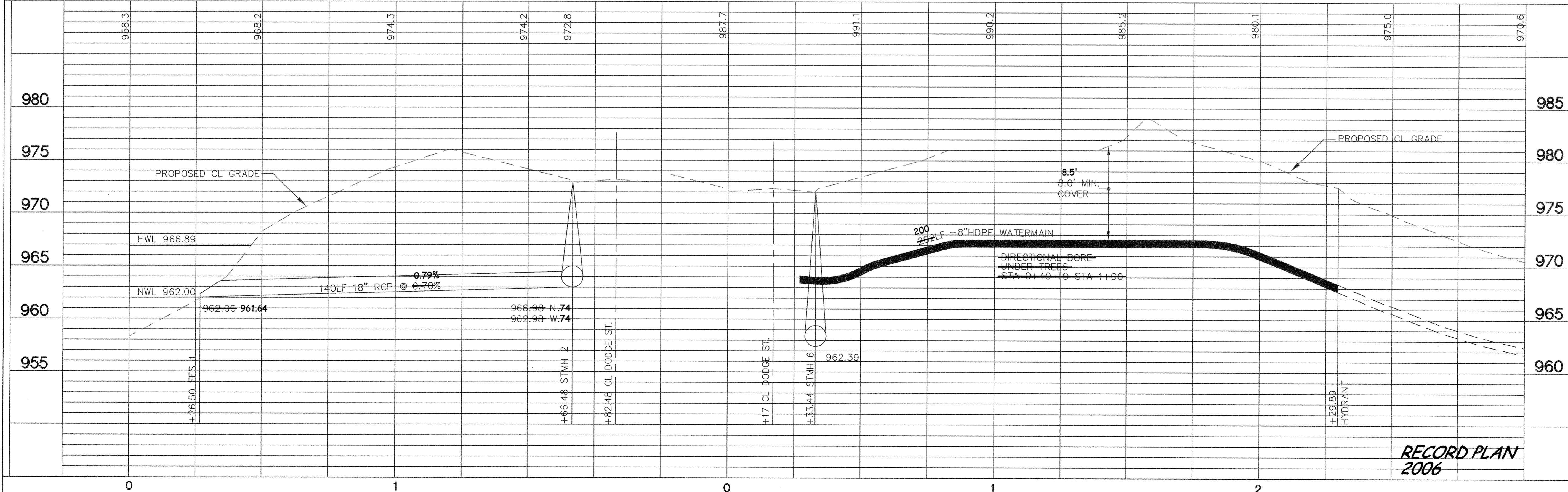


STORM PROFILES

SEE SHEET U2



- NOTES:**
1. VERIFY LOCATION AND ELEVATIONS OF EXISTING UTILITIES.
 2. CONTACT "GOPHER STATE ONE CALL" FOR LOCATIONS OF BURIED UTILITIES. CALL (651) 454-0002 OR 1 (800) 252-1166.
 3. 4" P.V.C., SDR 26, SANITARY SEWER SERVICES.
 4. 1", TYPE "K" COPPER, WATER SERVICE.
 5. VALVES TO BE PLACED 3' FROM HYDRANT.
 6. HYDRANTS TO BE 8'-6" BURY.
 7. SEE SHEET U3 FOR STORM SEWER SCHEDULE



DATE	REVISIONS	BY
07/17/06	REVISED STORM DESIGN	SE/PJK
08/01/06	REVISED PER CITY COMMENTS	SE/PJK
08/07/06	REVISED PER CLIENTS REQUEST	SE/PJK
08/07/06	AS-BUILT PER CITY	SE/PJK

U5

RECORD PLAN 2006

STORM SEWER AND WATERMAIN CONSTRUCTION
HILLSIDE ESTATES 10TH ADDITION
 CITY OF ELK RIVER, MINNESOTA

OWNER/DEVELOPER
RIVERSIDE COMPANIES
 19230 EVANS STREET, SUITE 115
 ELK RIVER, MINNESOTA
 PHONE: 763-241-1801