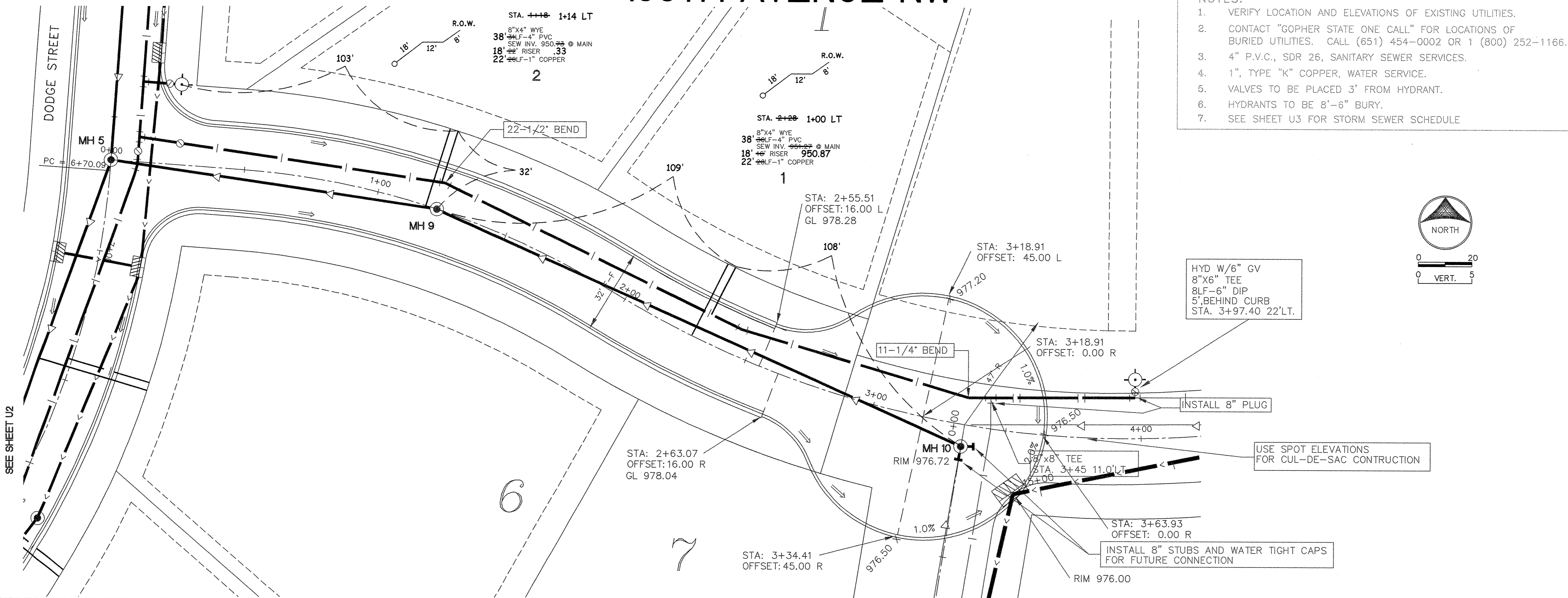
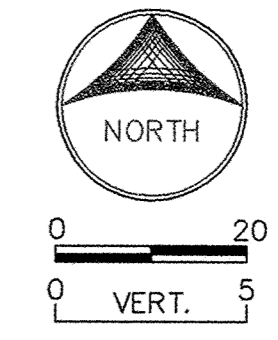


195TH AVENUE NW



- NOTES:**
1. VERIFY LOCATION AND ELEVATIONS OF EXISTING UTILITIES.
 2. CONTACT "GOPHER STATE ONE CALL" FOR LOCATIONS OF BURIED UTILITIES. CALL (651) 454-0002 OR 1 (800) 252-1166.
 3. 4" P.V.C., SDR 26, SANITARY SEWER SERVICES.
 4. 1", TYPE "K" COPPER, WATER SERVICE.
 5. VALVES TO BE PLACED 3' FROM HYDRANT.
 6. HYDRANTS TO BE 8'-6" BURY.
 7. SEE SHEET U3 FOR STORM SEWER SCHEDULE



SEE SHEET U2

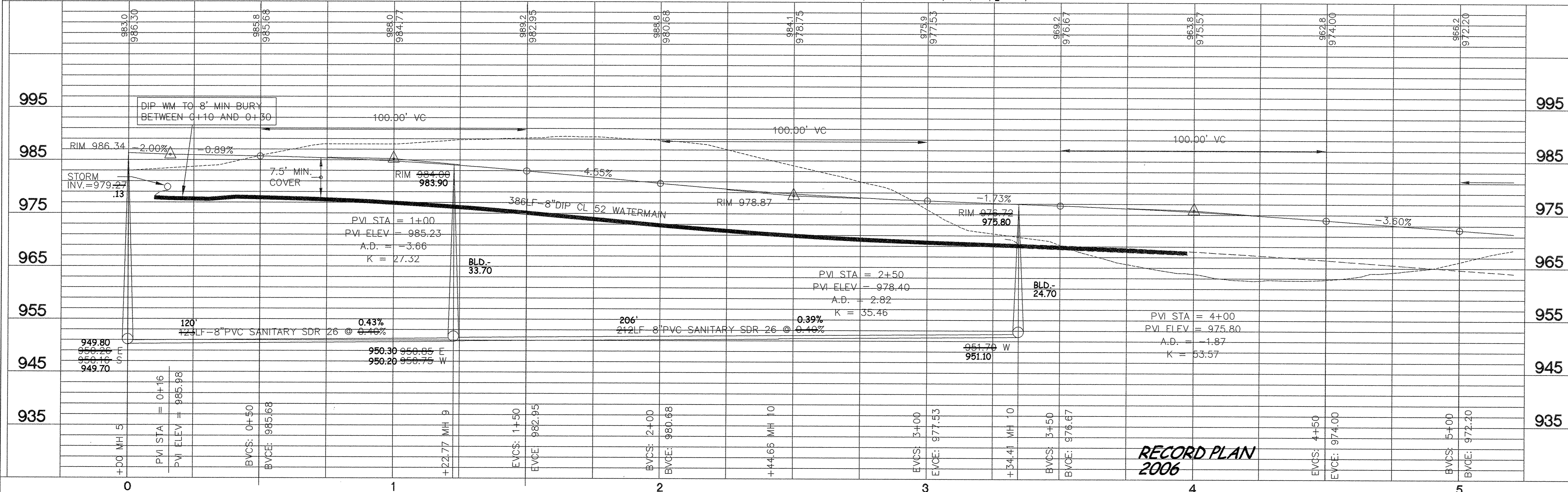
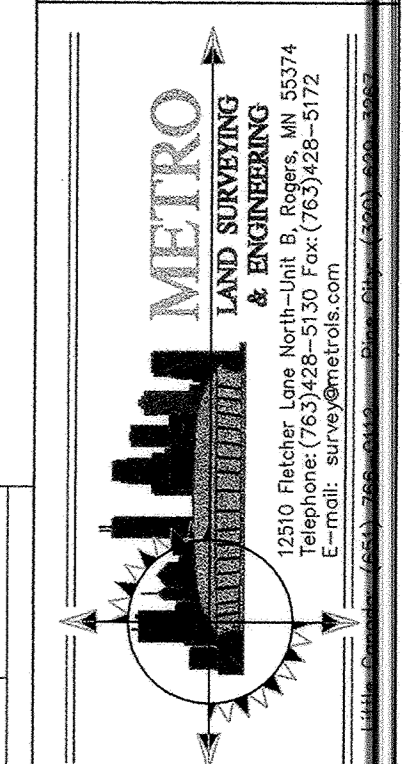
DATE: 12/1/03
SCALE: 1"=20'
PROJECT: R101.003
CHECKED: [Signature]
APPROVED: [Signature]

SANITARY SEWER, WATERMAIN, STORM SEWER AND STREET CONSTRUCTION HILLSIDE ESTATES 10TH ADDITION 195TH AVENUE NW STA. 0+00 TO 5+00

CITY OF ELK RIVER, MINNESOTA

OWNER/DEVELOPER

RIVERSIDE COMPANIES
19230 EVANS STREET, SUITE 115
ELK RIVER, MINNESOTA
PHONE: 763-241-1801



RECORD PLAN 2006

DATE	REVISIONS	BY
06/17/03	REVISED STORM DESIGN	AS/PXL
08/10/03	REVISED PER CITY COMMENTS	AS/PXL
02/08/08	REVISED PER CLIENTS REQUEST	LEP
04/10/07	AS-BUILT PER CITY	LEY

U4